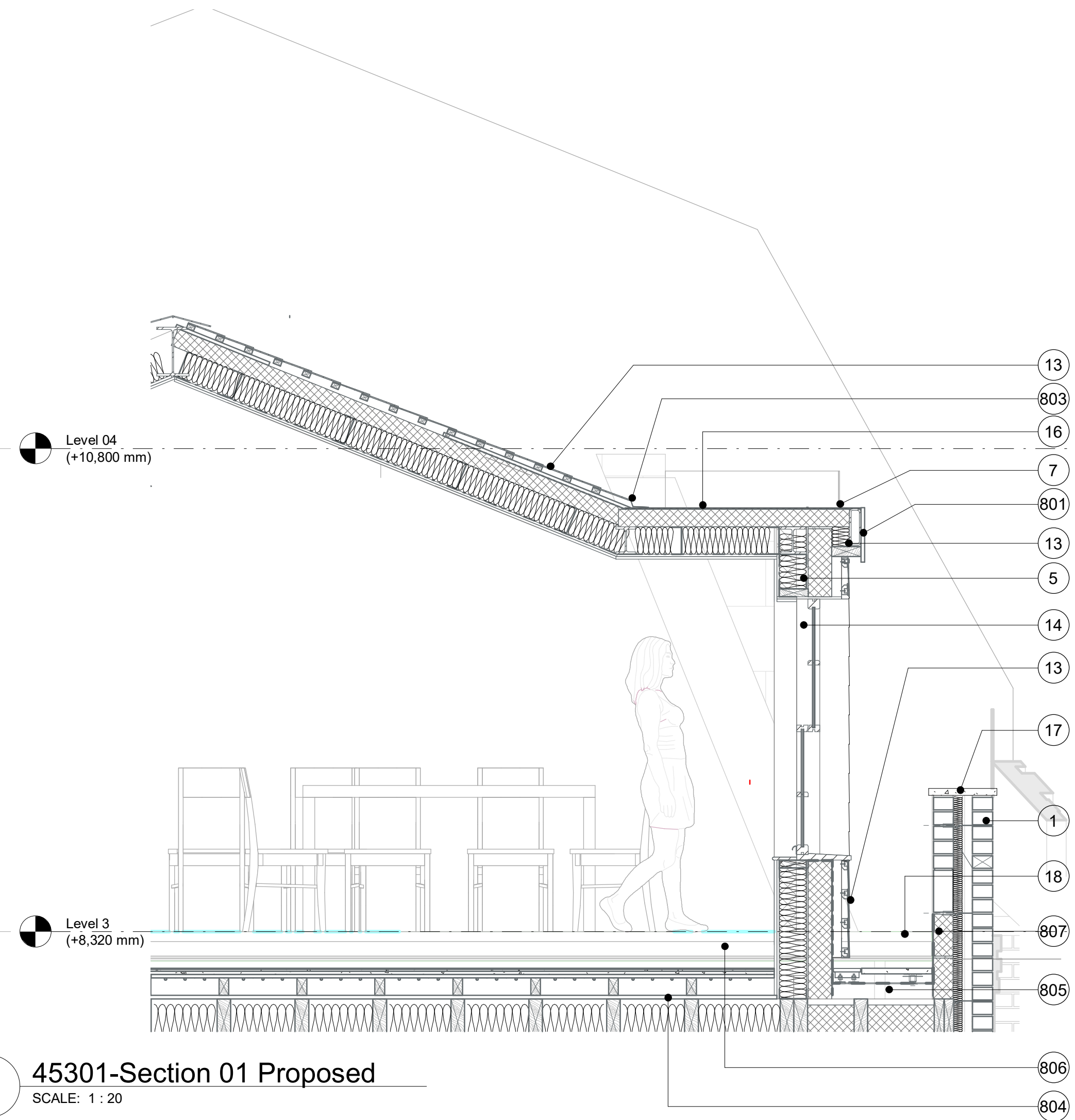


3 20201-North Elevation Proposed Copy 1
SCALE: 1 : 20



2 45301-Section 01 Proposed
SCALE: 1 : 20

EXTERNAL FINISHES

- 1 Buff Brick
- 2 White Render Ornamentation
- 3 White Render
- 4 Clear Single Glazing
- 5 White Painted Timber Sash Window Frame
- 6 Black Timber Panel Door
- 7 Grey Lead Fascia
- 8 Black Metal Rain-water Pipe
- 9 Terracota Chimney Flue
- 10 Brown Roof Tiles
- 11 Black Metal Gutter
- 12 Black Metal Modular Skylight Window with Clear Double Glazing Panel
- 13 Grey Slate Roof Tiles
- 14 Clear Double Glazing
- 15 Black PVC Boiler Flue
- 16 Black Felt Roof
- 17 Sandstone Flat Coping
- 18 Brown Timber Decking
- 19 Grey Concrete Planter
- 20 Black Cast Iron Railing
- 21 Sandstone Cornice Feature

EXTERNAL FINISHES

- 801 Structural Consideration to be applied by Structural Engineer
- 802 12.5 mm Plasterboard
- 803 Grey Code 5 Lead Flashing
- 804 Mineral Insulation
- 805 Rigid Insulation
- 806 Underfloor Heating System
- 807 Insulating Concrete Block
- 808 Smoke Chamber
- 809 Flue Terracota Tile

P01 Issued For Planning 19.04.24
Rev Date



Architecture & Interiors
10 Fitzroy Square, Fitzrovia, London, W1T 5HP
T020 8014 8130
www.aga-associates.com

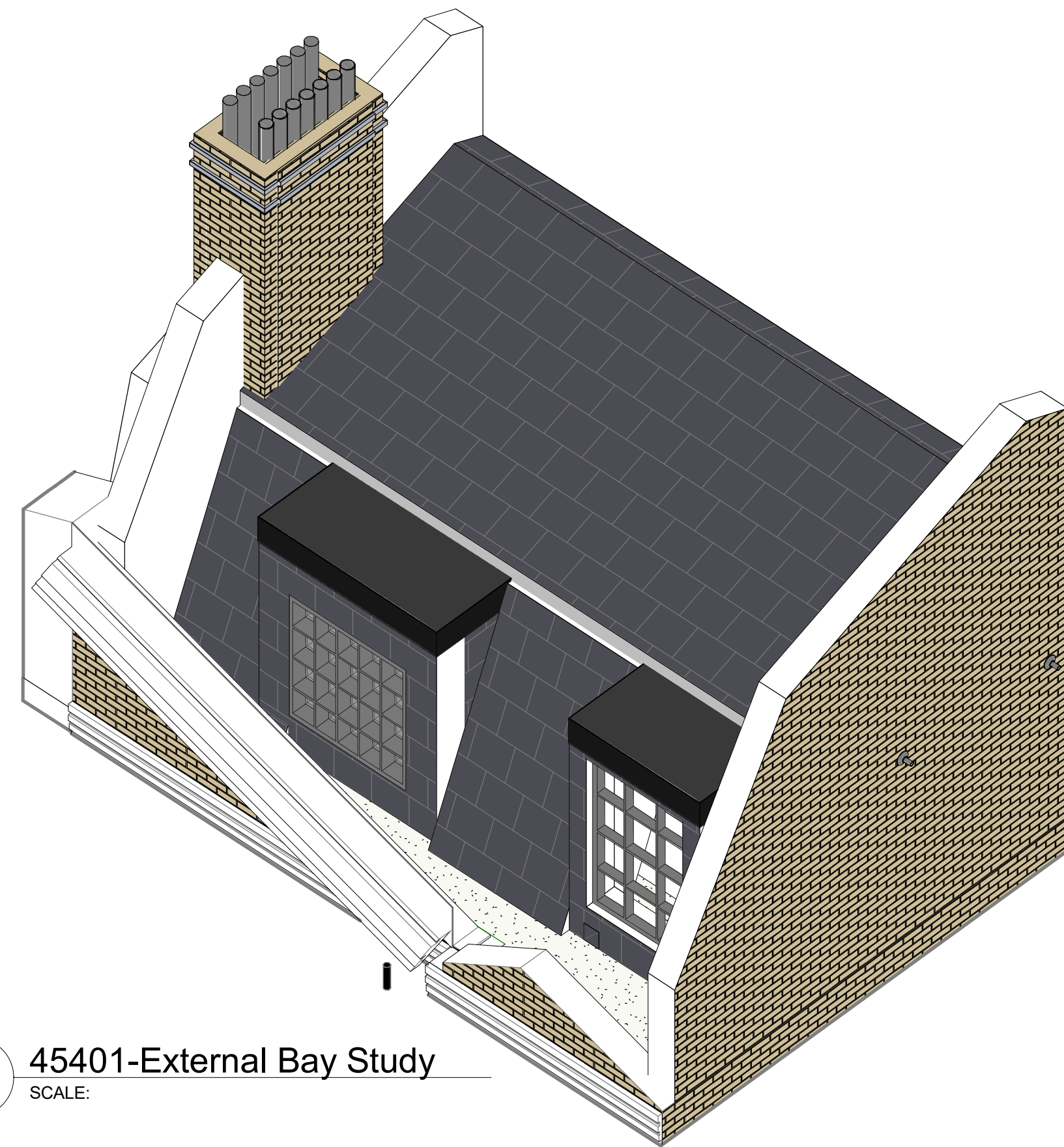
Client
Ernesto Palanco

Project
Flat 3, 9 Wilmot Place, Camden,
London, NW1 9JP

Drawing
External Bay Study
North Elevation Proposed

RJ Ref Scale (A1) Status Revision
1072 As indicated Planning P01

Drawing Number
1072-AGA-AGA-AZ-ZZ-DR-A-45101



4 45401-External Bay Study
SCALE: