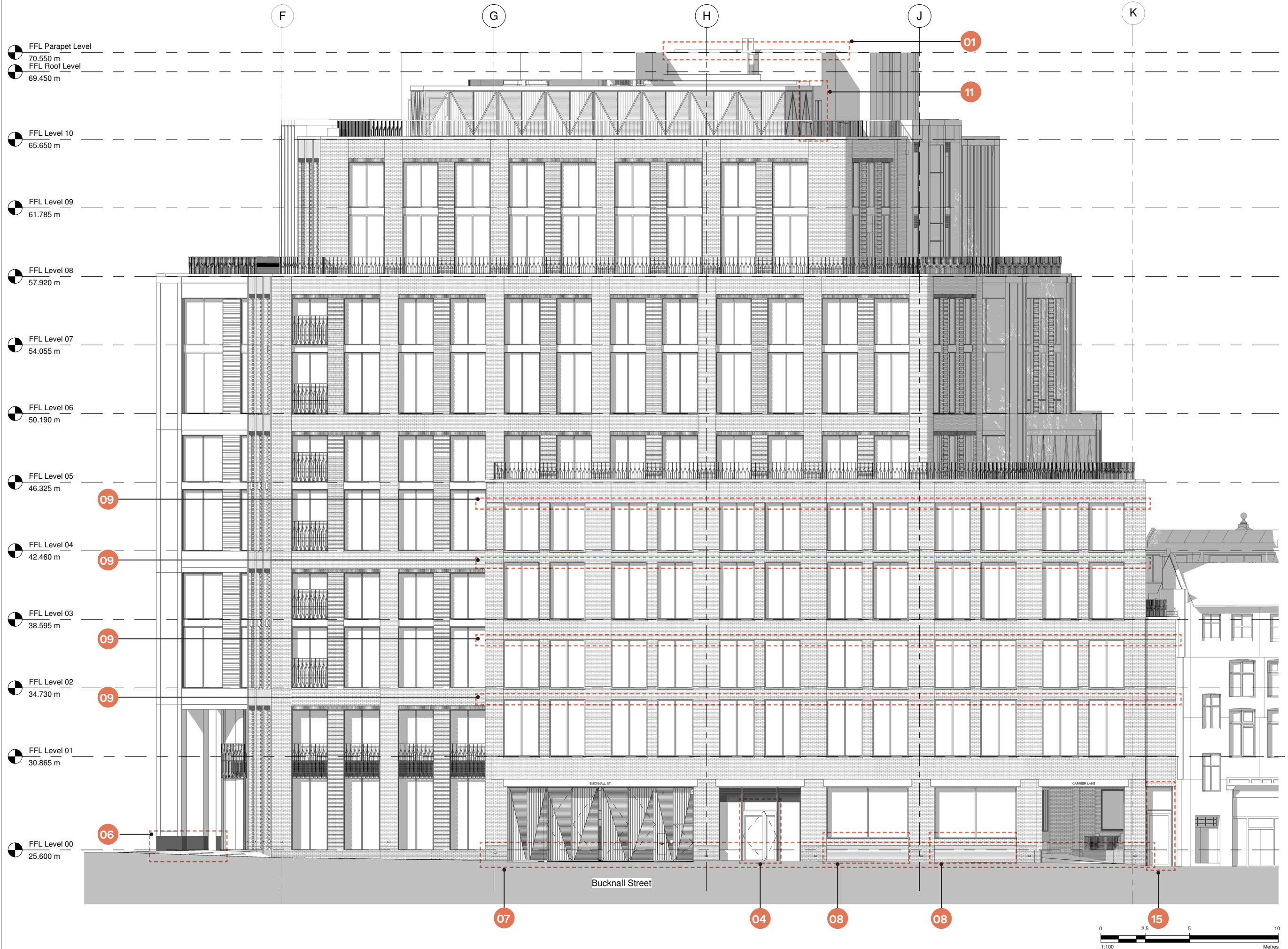


Proposed



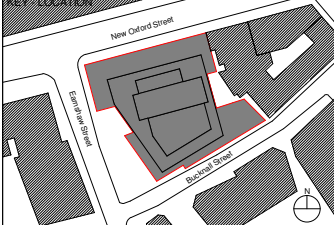
Disclaimer
Do not scale from this drawing. Check all dimensions on site before fabrication or setting out. This document is copyright and may not be reproduced without permission of the owner.

Notes
Not all revision notes appear on all sheets. Refer to tagged clouds on drawing opposite for relevant revision.

- 01. Lift overrun heights increased by 175mm to allow for sufficient insulation build-up with limited combustibility.
- 02. Roof access locations adjusted
- 03. Retail door height adjusted
- 04. Retail door height and configuration adjusted
- 05. Aluminium portal to arcade entrance introduced
- 06. Granite plinth height increased
- 07. Glazed brick plinth height increased
- 08. UKPN louvre size reduced, brick lintel introduced.
- 09. Recessed brick detail position adjusted
- 10. Low level transom to FR curtain wall introduced
- 11. Extent of rainscreen cladding/louvred screen adjusted
- 12. Revolving door drum size increased
- 13. Terrace sliding door height revised
- 14. Cyclist entrance design revised
- 15. Intermediate precast piers width adjusted

03	NMA	18/11/2022	Apt
02	NMA	22/07/2021	Apt
01	NMA	01/10/2019	Apt
00	NMA	28/09/2018	RPP
Rev	Reason for Issue	Date	Iss

Reviso Drawing Review Approval



Apt

235 St John Street London EC1V 4NG www.apt.london

Client
Royal London Asset Management

Project
Castlewood House

Drawing Title
General Arrangement South Elevation

Scale	Drawn By	Issued By
1 : 100 @ A1	Apt	Apt

Non Material Amendment

Project No.	Drawing No.	Revision
15023	A_P_303	03