



Landscape Design Statement – 41 Upper Park Road NW3 2UL

We aim to protect and improve the existing environment and biodiversity within the garden and provide the ideal conditions for existing flora, fauna, and microhabitats, including adding bird box houses and insect box houses and collect rainwater to a water butt for use in the garden.

We intend to plant densely at 5no plants/m² with a mixture of native and semi native plant species which will help increase the number of insects and is beneficial for pollinators with climbers to boundary walls to support and encourage wildlife, insects, bees, and birds.

We will supply and install a Bauder wildflower meadow roof for the proposed office and a new lawn will be laid down the centre of the garden. The roof garden will provide interest with many varieties of British wildflowers displaying over a long flowering season.

The existing paving will be used to provide a small area of paving with stepping stones through the lawn to the office, and for control of drainage, the rainwater will run off the paving onto the adjacent lawn and shrub beds.

We have included a mixture of herbaceous perennials, shrubs, and climbers to provide texture, colour, and interest throughout the year, creating a soft vibrant living space, a beautiful garden area for the pleasure of people occupying and using the garden.

The garden will provide a microclimate and ideal environment for plants, insects, birds, and bees that will enhance biodiversity, and through regular controlled maintenance assist the garden to grow, establish, and flourish.

Midayo Landscapes Ltd
Tele : 07549 614912 Email: mike@midayo-landscapes.co.uk



5 Year Maintenance & Management Plan

41 Upper Park Road NW3 2UL

Years 1 - 5

- Maintain shrub beds weed free throughout the growing season.
- Keep beds clear of litter and other debris.
- Water shrubs, perennials, and climbers through the growing season to ensure they flourish and thrive.
- Water shrubs, perennials, and climbers during periods of drought
- Prune shrubs, perennials, and climbers as required to keep clear of footpaths and maintain a suitable height for good visibility.
- Prune to encourage growth and create well balanced shaped shrubs.
- Feed shrubs annually with a slow-release fertiliser in accordance with manufacturer's instructions.
- Replace and dead or diseased plants annually with matching species.
- Discuss with the local authority if the planting does not provide pleasing areas of established and well-maintained shrubs, perennials, and climbers.

Midayo Landscapes Ltd
Tele : 07549 614912 Email: mike@midayo-landscapes.co.uk



Maintenance Schedule – 41 Upper Park Road NW3 2UL

Shrub Beds

- Water shrubs fortnightly during November to March soaking the top 150mm topsoil providing the topsoil is dry if waterlogged delay watering. During the growing season water every 2 days allowing 3-4 litres per large shrub/climber and 1 litre per small plant, water preferably early morning before sunrise or late evening after sunset, water daily in hot dry weather.
- Maintain shrubs beds weed free by regular hand weeding, remove weeds from beds, lightly fork between plants.
- Prune shrubs as required to maintain size and shape, most shrubs can be pruned in May and August or monthly to keep them looking neat and tidy but check for details of each shrub species pruning requirements and timing prior to carrying out any pruning work.
- Cut back herbaceous perennials and bulbs in accordance with the named species requirements.
- Check climbing plants monthly and tie in any new growth to line wires to assist growth and spread, prune climbers in accordance with individual species pruning requirements.
- Supply and spread a general fertiliser early Spring each year in accordance with the manufacturer's recommendations.
- Lightly spread a 50mm layer of compost throughout the beds in February to March each year this will help retain moisture coming into Spring and suppress weed growth.
- Remove any dead or diseased shrubs throughout the year, remove off site and replace with new stock in the next planting season between October to April.

Grass

- Do not walk on the grass for 6 weeks following laying except for cutting fortnightly.
- Cut grass 2 weeks following laying and use a high cut to avoid disturbing the rooting turf, thereafter, cut the grass and trim edges fortnightly, remove arisings.
- Water the lawn daily for the first 2 weeks after laying giving it a good soaking without waterlogging the lawn.

Midayo Landscapes Ltd
Tele : 07549 614912 Email: mike@midayo-landscapes.co.uk

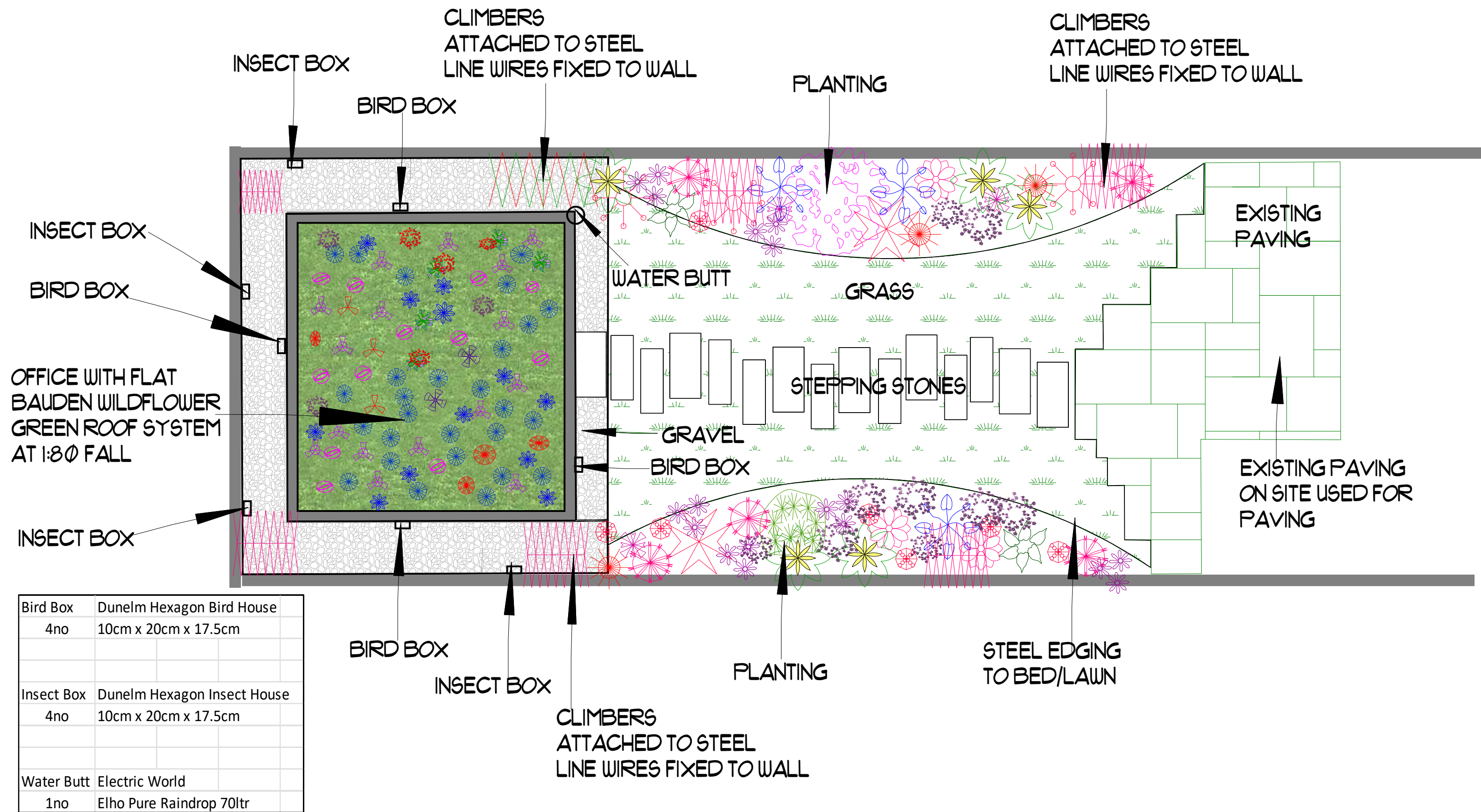


- Spread a general lawn Spring fertiliser in April and an Autumn fertiliser in September all in accordance with manufacturer's instructions.
- Maintain broadleaf weeds with a selective herbicide use in accordance with manufacturer's instructions.

The above schedule of works covers most maintenance works that will require carrying out to maintain your herbaceous perennials, shrubs, and climbers, in a good healthy condition to allow the plants to flourish grow and mature into healthy specimens. Should you have any queries please don't hesitate to contact me.

Midayo Landscapes Ltd
Tele : 07549 614912 Email: mike@midayo-landscapes.co.uk

Company Registered Number: 12785183 Registered Address: 29 Eyres Drive Alderbury, Salisbury, Wilts, SP5 3TD



Revision #: F

Date: 02/05/2024

Scale:

1:50

Landscape Plan: C156-1F L'scape Proposal

41 Upper Park Rd Landscape

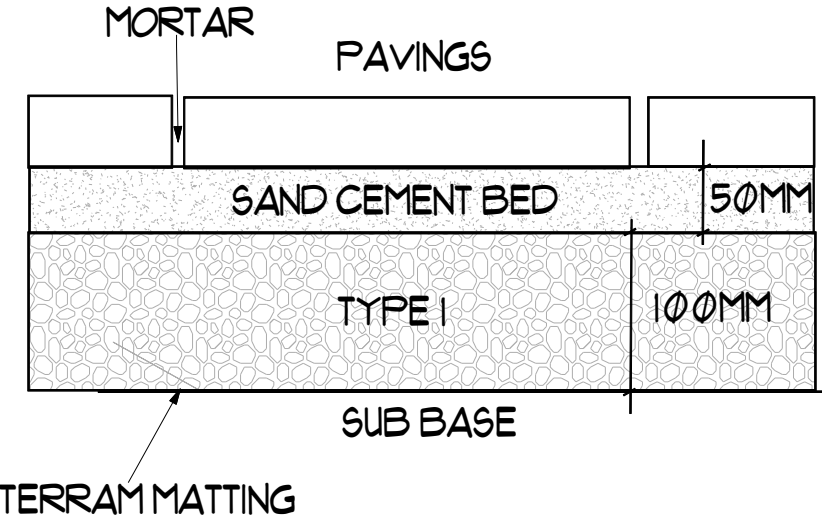
Landscape Design by: Mike young

Midayo Landscapes Ltd

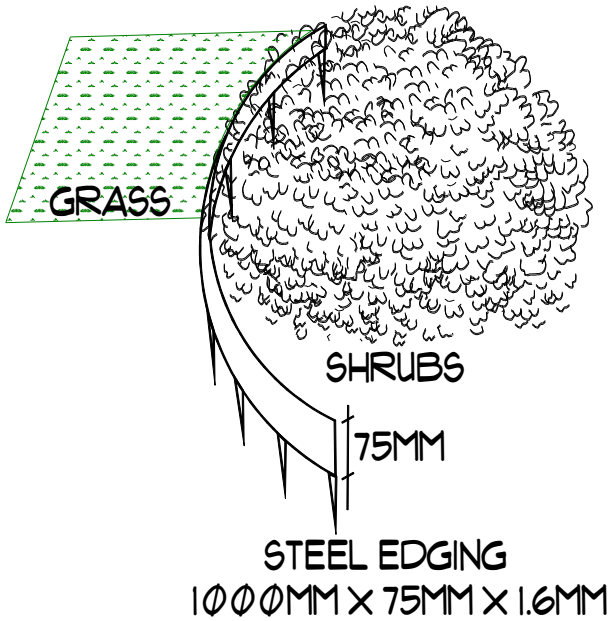
COPYRIGHT © 2024 MIDAYO LANDSCAPES LTD



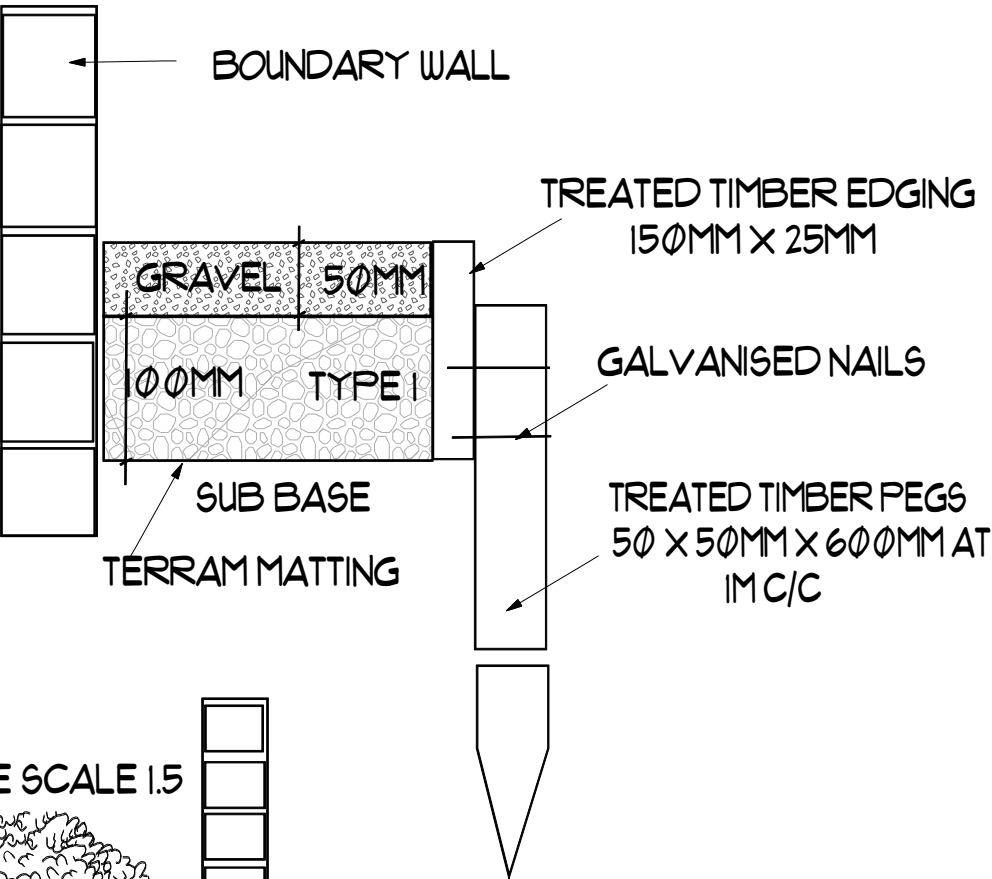
PAVING SECTION A-A SCALE 1.5



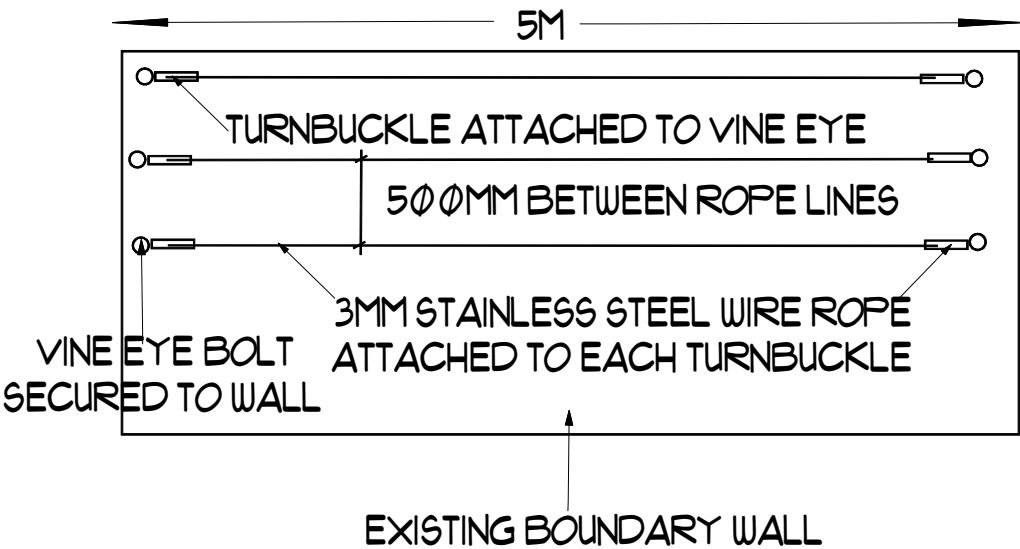
STEEL EDGING SECTION B-B SCALE 1.5



GRAVEL PATH SECTION C-C SCALE 1.5



STAINLESS STEEL LINE WIRES FOR TRAINING PLANTS
SECTION D-D SCALE 1.5



TOPSOIL DEPTH SECTION E-E SCALE 1.5

