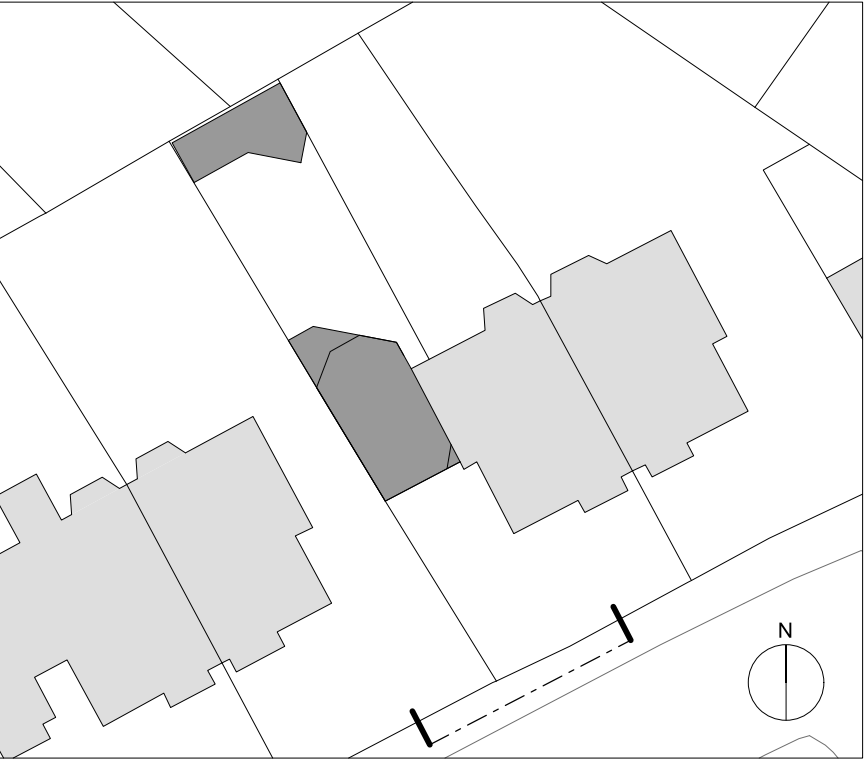




01 - LYNDHURST ROAD ELEVATION



Notes

- CONTEXT:
- 01. Entrance to 9 Lyndhurst Road front garden
 - 02. Entrance to 10 Lyndhurst Road front garden
 - 03. Stair to 10A Lyndhurst Road, basement flat
 - 04. Tiled stair to 10B-D Lyndhurst Road
 - 05. 10A-D Lyndhurst bin store
 - 06. Painted brick wall and railing to basement flat stair
 - 07. Stair to 9 Lyndhurst Road basement flat
 - 08. Stair to 9 Lyndhurst Road GF, FF, SF flats
 - 09. 9 Lyndhurst side passage railing and gate
 - 10. Windows to 9 Lyndhurst basement flat
 - 11. Manhole 1
 - 12. Manhole 2
 - 13. Manhole 3
 - 14. Brick wall to the pavement
 - 15. Bathroom to 10B Lyndhurst Road
 - 16. Bathroom window to 10B Lyndhurst Road
 - 17. Front brick vaults below the garden
 - 18. Rear vault below the garden
 - 19. London yellow stock brick
 - 20. Brick window lintels
 - 21. Brick corbel detailing
 - 22. White painted timber sash windows
 - 23. Slate roof
 - 24. White render
 - 25. White painted decorative detail
 - 26. Neighbouring gas supply
 - 27. Downpipes
 - 28. White painted window cills
 - 29. White painted window lintels
 - 30. Decorative tile band
 - 31. Painted timber front door with glazed fanlight
 - 32. Neighbouring tree

- PROPOSED:
- 100. Entrance to The Cottage, 10 Lyndhurst Road
 - 101. Garden path
 - 102. Bin store with sedum roof
 - 103. Garden studio
 - 104. New lawn
 - 105. Raised planter
 - 106. Planting beds
 - 107. Existing tree retained
 - 108. Paved garden terrace
 - 109. Basement courtyard
 - 110. Retained and refurbished brick boundary wall
 - 111. Entrance porch with niche
 - 112. Front door
 - 113. Triple glazed windows
 - 114. Triple glazed rooflights
 - 115. Garden studio door
 - 116. Flat roof
 - 117. Standing seam metal roof
 - 118. Stone façade
 - 119. Stone lintels and cills
 - 120. Stone coping
 - 121. Gutter
 - 122. Aluminium hopper and downpipes
 - 123. Air Source Heat Pump (ASHP) with acoustic enclosure
 - 124. New bathroom window to 10B Lyndhurst Road
 - 125. New brick boundary wall
 - 126. Metal balustrade
 - 127. New brick work to match existing
 - 128. New tree
 - 129. Water butt
 - 130. Garden tool store
 - 131. New low level brick wall

P00 13 02 24 Planning Issue

revision date amendment

MARY DUGGAN

Royle Studios, Unit 2, 23-41 Wenlock Road, London, N1 7SG +44(0)20 3327 0990
marydugganarchitects.com

DRAWING NOT FOR CONSTRUCTION. Any discrepancies to be reported to MD immediately. All areas provided are intended for illustrative purposes only. MD advise that the validity of all quantities and numbers be subject to a detailed check, audit and sign off by an RICS chartered surveyor. MD do not accept any liability for decisions or actions derived from interpretation, extrapolation or use of the areas information shown. Measurements have been calculated in accordance with the UK Government Code of Measuring Practice: Definitions for Rating Purposes. © Mary Duggan Architects 2023

LYNDHURST ROAD

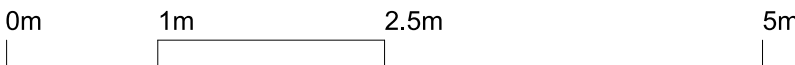
Title PROPOSED ELEVATION - LYNDHURST ROAD

Status FOR PLANNING

Scale 1:50 @A1 / 1:100 @A3

job no source zone element drawing no. revision

MD141 A - (01) 200 P00





01 - FRONT ELEVATION



02 - REAR ELEVATION



Notes

- CONTEXT:
- 01. Entrance to 9 Lyndhurst Road front garden
 - 02. Entrance to 10 Lyndhurst Road front garden
 - 03. Stair to 10A Lyndhurst Road, basement flat
 - 04. Tiled stair to 10B-D Lyndhurst Road
 - 05. 10A-D Lyndhurst bin store
 - 06. Painted brick wall and railing to basement flat stair
 - 07. Stair to 9 Lyndhurst Road basement flat
 - 08. Stair to 9 Lyndhurst Road GF, FF, SF flats
 - 09. 9 Lyndhurst side passage railing and gate
 - 10. Windows to 9 Lyndhurst basement flat
 - 11. Manhole 1
 - 12. Manhole 2
 - 13. Manhole 3
 - 14. Brick wall to the pavement
 - 15. Bathroom to 10B Lyndhurst Road
 - 16. Bathroom window to 10B Lyndhurst Road
 - 17. Front brick vaults below the garden
 - 18. Rear vault below the garden
 - 19. London yellow stock brick
 - 20. Brick window lintels
 - 21. Brick corbel detailing
 - 22. White painted timber sash windows
 - 23. Slate roof
 - 24. White render
 - 25. White painted decorative detail
 - 26. Neighbouring gas supply
 - 27. Downpipes
 - 28. White painted window cills
 - 29. White painted window lintels
 - 30. Decorative tile band
 - 31. Painted timber front door with glazed fanlight
 - 32. Neighbouring tree

- PROPOSED:
- 100. Entrance to The Cottage, 10 Lyndhurst Road
 - 101. Garden path
 - 102. Bin store with sedum roof
 - 103. Garden studio
 - 104. New lawn
 - 105. Raised planter
 - 106. Planting beds
 - 107. Existing tree retained
 - 108. Paved garden terrace
 - 109. Basement courtyard
 - 110. Retained and refurbished brick boundary wall
 - 111. Entrance porch with niche
 - 112. Front door
 - 113. Triple glazed windows
 - 114. Triple glazed rooflights
 - 115. Garden studio door
 - 116. Flat roof
 - 117. Standing seam metal roof
 - 118. Stone façade
 - 119. Stone lintels and cills
 - 120. Stone coping
 - 121. Gutter
 - 122. Aluminium hopper and downpipes
 - 123. Air Source Heat Pump (ASHP) with acoustic enclosure
 - 124. New bathroom window to 10B Lyndhurst Road
 - 125. New brick boundary wall
 - 126. Metal balustrade
 - 127. New brick work to match existing
 - 128. New tree
 - 129. Water butt
 - 130. Garden tool store
 - 131. New low level brick wall

P00 13 02 24 Planning Issue

revision date amendment

MARY DUGGAN

Royle Studios, Unit 2, 23-41 Wenlock Road, London, N1 7SG +44(0)20 3327 0990
marydugganarchitects.com

DRAWING NOT FOR CONSTRUCTION. Any discrepancies to be reported to MD immediately. All areas provided are intended for illustrative purposes only. MD advise that the validity of all quantities and numbers be subject to a detailed check, audit and sign off by an RICS chartered surveyor. MD do not accept any liability for decisions or actions derived from interpretation, extrapolation or use of the areas information shown. Measurements have been calculated in accordance with the UK Government Code of Measuring Practice: Definitions for Rating Purposes. © Mary Duggan Architects 2023

LYNDHURST ROAD

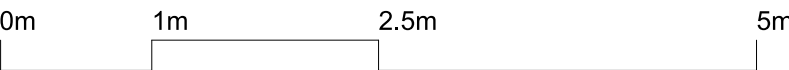
Title PROPOSED ELEVATIONS - FRONT & REAR

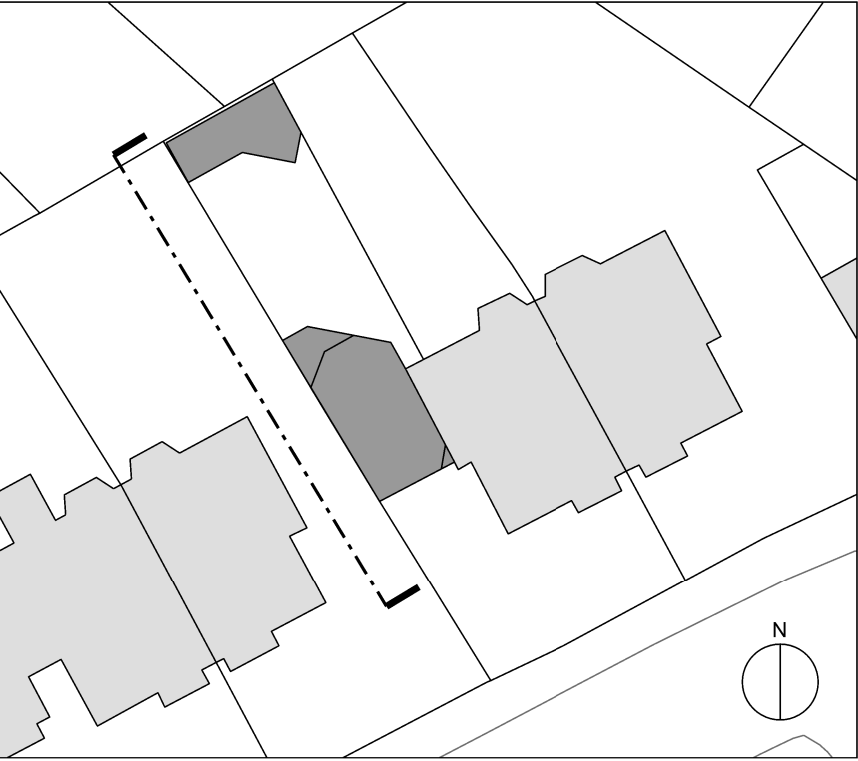
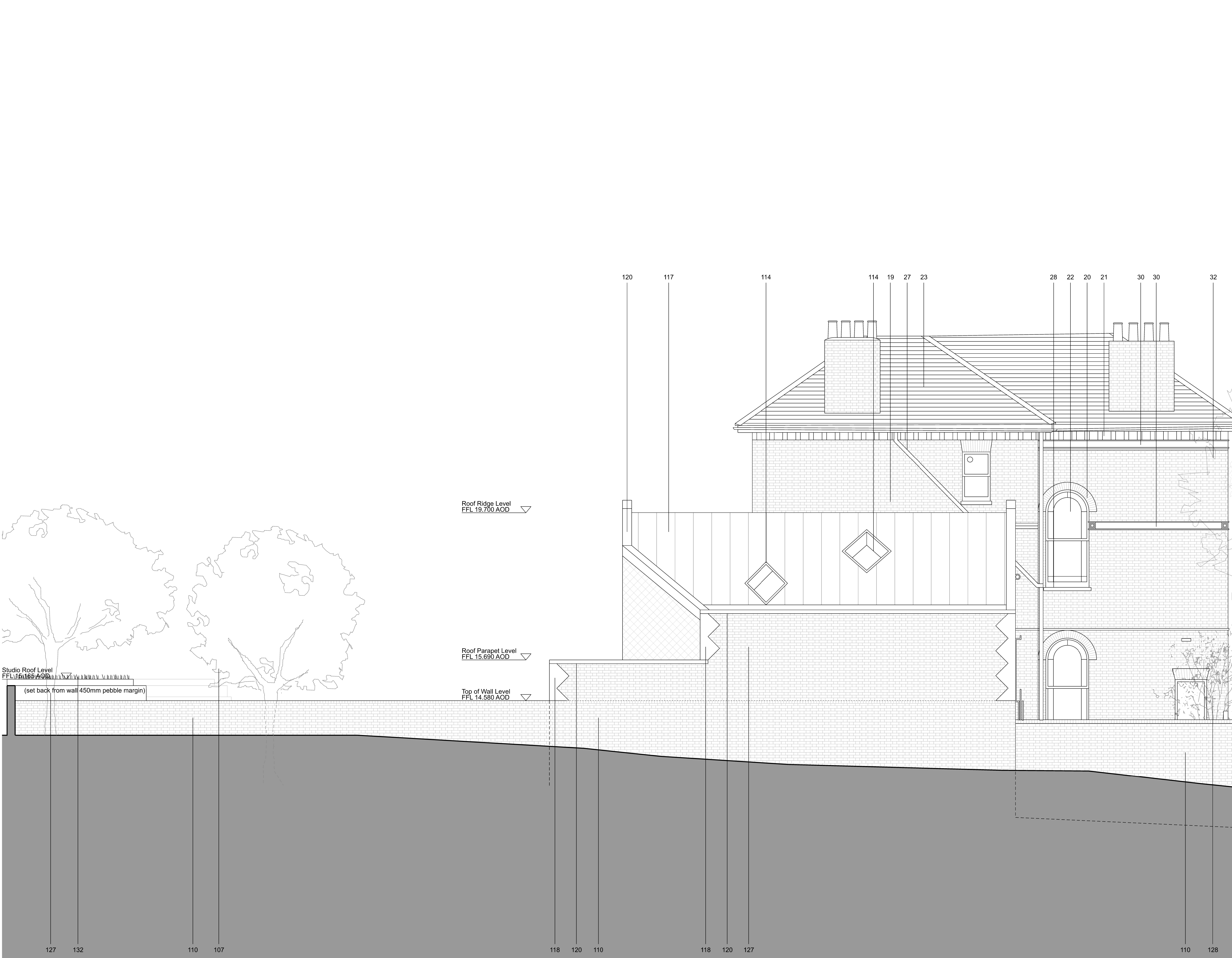
Status FOR PLANNING

Scale 1:50 @A1 / 1:100 @A3

job no source zone element drawing no. revision

MD141 A - (01) 201 P00





Notes

- CONTEXT:
- 01. Entrance to 9 Lyndhurst Road front garden
 - 02. Entrance to 10 Lyndhurst Road front garden
 - 03. Stair to 10A Lyndhurst Road, basement flat
 - 04. Tiled stair to 10B-D Lyndhurst Road
 - 05. 10A-D Lyndhurst bin store
 - 06. Painted brick wall and railing to basement flat stair
 - 07. Stair to 9 Lyndhurst Road basement flat
 - 08. Stair to 9 Lyndhurst Road GF, FF, SF flats
 - 09. 9 Lyndhurst side passage railing and gate
 - 10. Windows to 9 Lyndhurst basement flat
 - 11. Manhole 1
 - 12. Manhole 2
 - 13. Manhole 3
 - 14. Brick wall to the pavement
 - 15. Bathroom to 10B Lyndhurst Road
 - 16. Bathroom window to 10B Lyndhurst Road
 - 17. Front brick vaults below the garden
 - 18. Rear vault below the garden
 - 19. London yellow stock brick
 - 20. Brick window lintels
 - 21. Brick corbel detailing
 - 22. White painted timber sash windows
 - 23. Slate roof
 - 24. White render
 - 25. White painted decorative detail
 - 26. Neighbouring gas supply
 - 27. Downpipes
 - 28. White painted window cills
 - 29. White painted window lintels
 - 30. Decorative tile band
 - 31. Painted timber front door with glazed fanlight
 - 32. Neighbouring tree

- PROPOSED:
- 100. Entrance to The Cottage, 10 Lyndhurst Road
 - 101. Garden path
 - 102. Bin store with sedum roof
 - 103. Garden studio
 - 104. New lawn
 - 105. Raised planter
 - 106. Planting beds
 - 107. Existing tree retained
 - 108. Paved garden terrace
 - 109. Basement courtyard
 - 110. Retained and refurbished brick boundary wall
 - 111. Entrance porch with niche
 - 112. Front door
 - 113. Triple glazed windows
 - 114. Triple glazed rooflights
 - 115. Garden studio door
 - 116. Flat roof
 - 117. Standing seam metal roof
 - 118. Stone façade
 - 119. Stone lintels and cills
 - 120. Stone coping
 - 121. Gutter
 - 122. Aluminium hopper and downpipes
 - 123. Air Source Heat Pump (ASHP) with acoustic enclosure
 - 124. New bathroom window to 10B Lyndhurst Road
 - 125. New brick boundary wall
 - 126. Metal balustrade
 - 127. New brick work to match existing
 - 128. New tree
 - 129. Water butt
 - 130. Garden tool store
 - 131. New low level brick wall
 - 132. Wildflower roof with pebble margin

P01 13 05 24 Outbuilding Amendments

P00 13 02 24 Planning Issue

revision date amendment

MARY DUGGAN

Royle Studios, Unit 2, 23-41 Wenlock Road, London, N1 7SG +44(0)20 3327 0990
marydugganarchitects.com

DRAWING NOT FOR CONSTRUCTION. Any discrepancies to be reported to MD immediately. All areas provided are intended for illustrative purposes only. MD advise that the validity of all quantities and numbers be subject to a detailed check, audit and sign off by an RICS chartered surveyor. MD do not accept any liability for decisions or actions derived from interpretation, extrapolation or use of the areas information shown. Measurements have been calculated in accordance with the UK Government Code of Measuring Practice: Definitions for Rating Purposes. © Mary Duggan Architects 2023

LYNDHURST ROAD

Title PROPOSED ELEVATION - SIDE

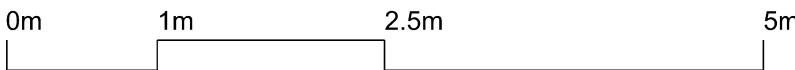
Status FOR PLANNING

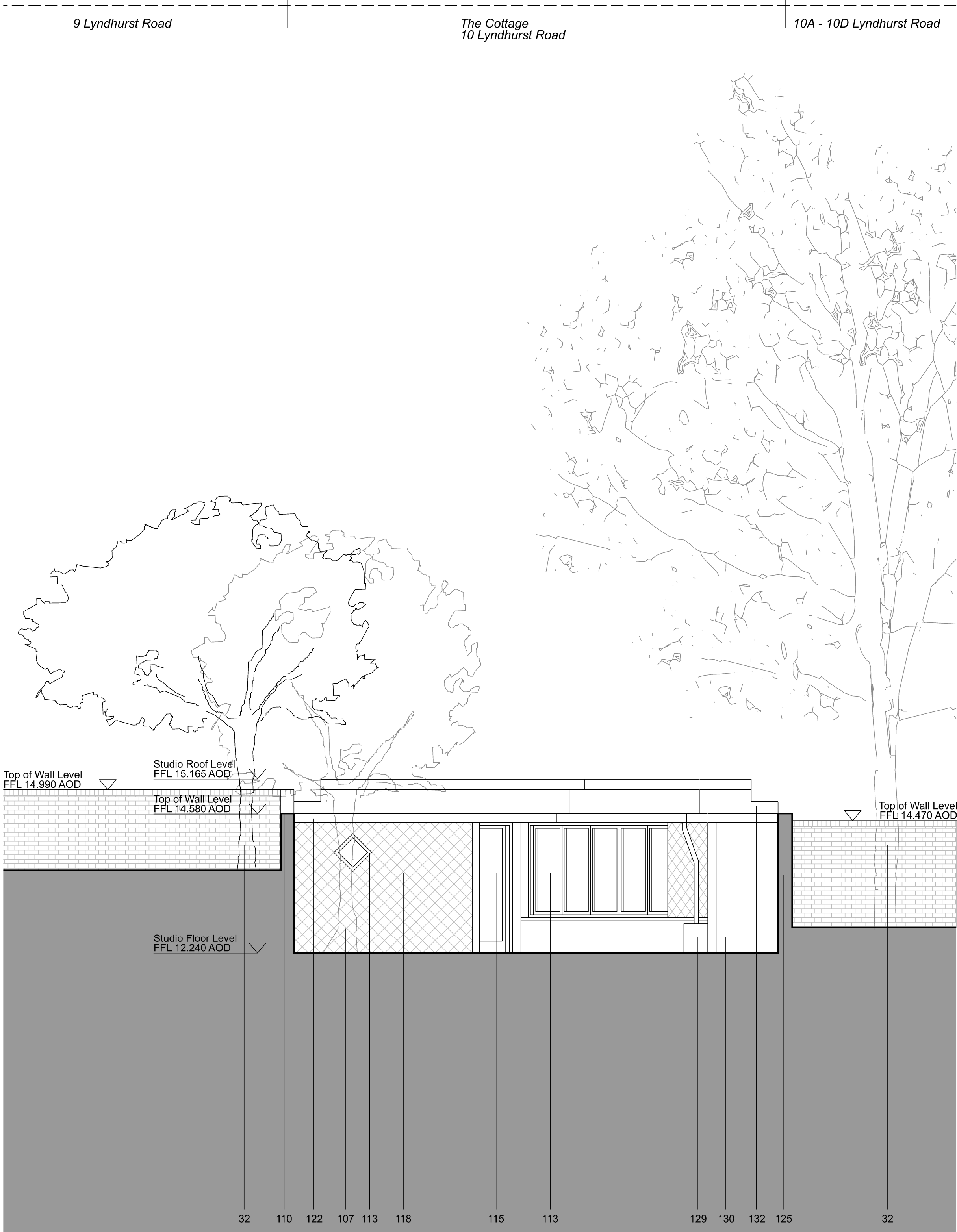
Scale 1:50 @A1 / 1:100 @A3

job no source zone element drawing no. revision

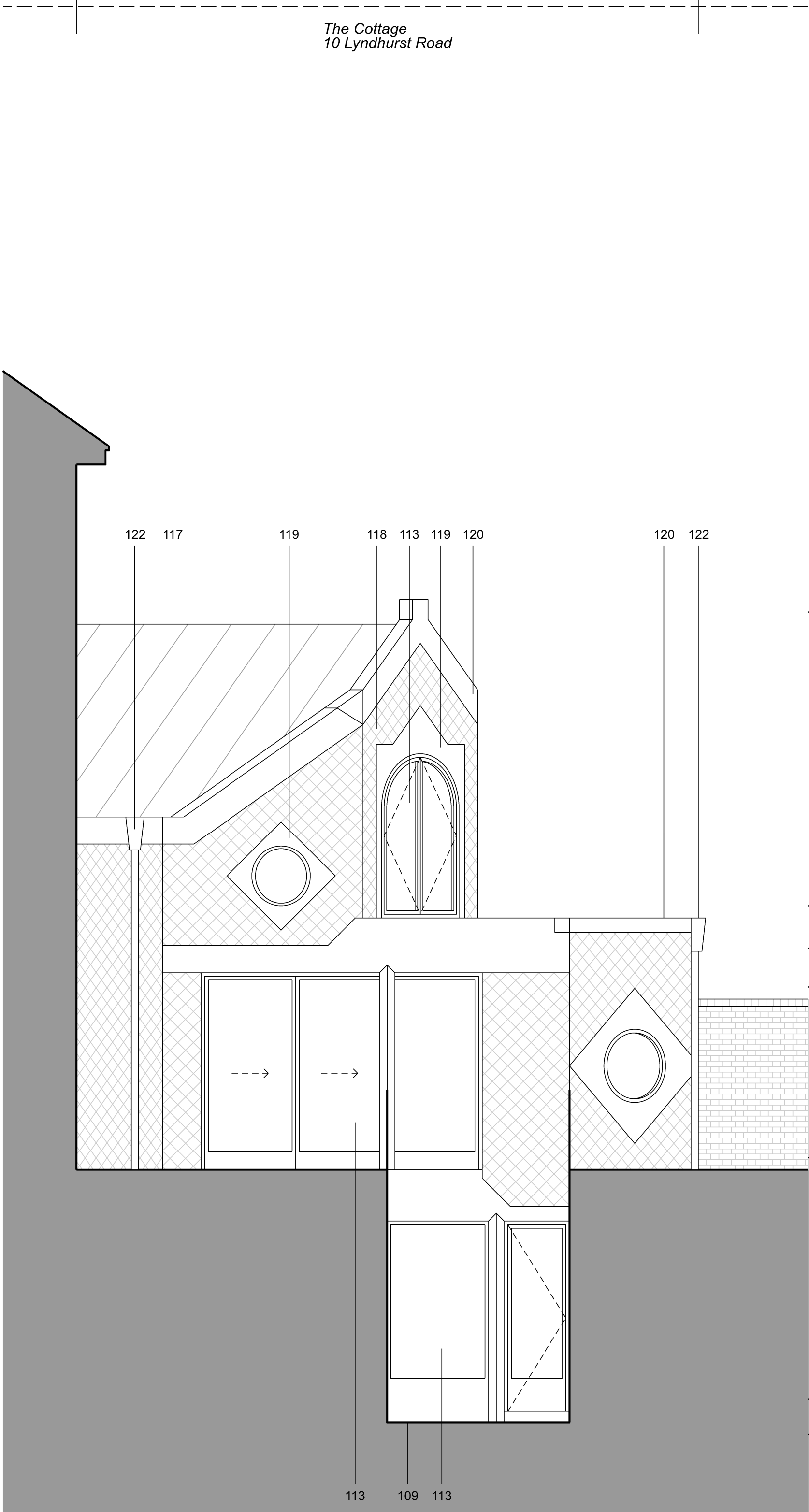
MD141 A - (01) 202 P01

01 - SIDE ELEVATION - 9 Lyndhurst Road

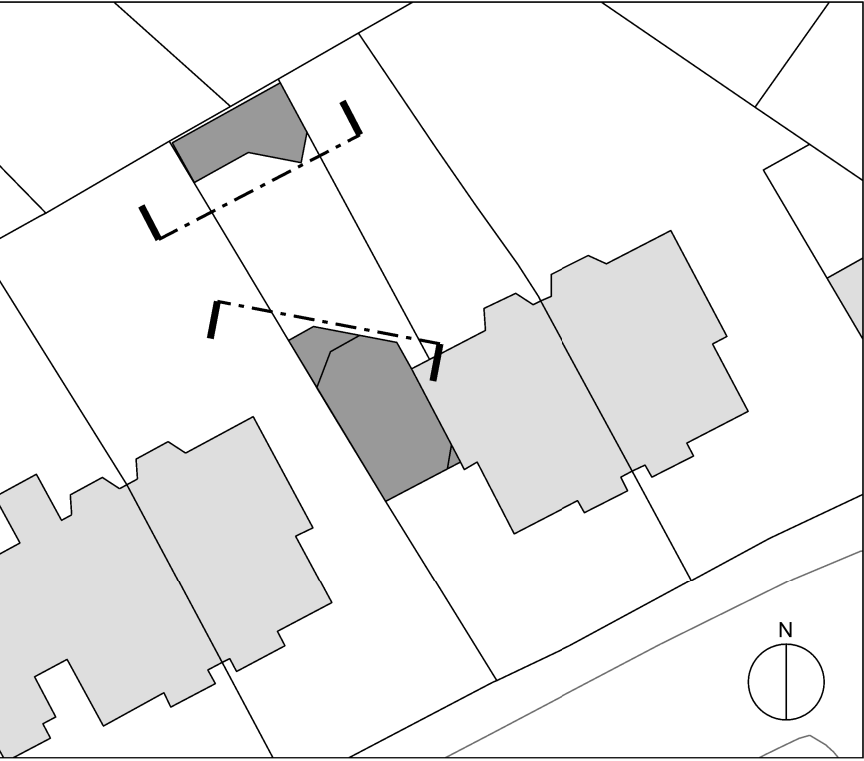




01 - GARDEN STUDIO ELEVATION



02 - REAR ELEVATION OBLIQUE VIEW



Notes

- CONTEXT:
- 01. Entrance to 9 Lyndhurst Road front garden
 - 02. Entrance to 10 Lyndhurst Road front garden
 - 03. Stair to 10A Lyndhurst Road, basement flat
 - 04. Tiled stair to 10B-D Lyndhurst Road
 - 05. 10A-D Lyndhurst bin store
 - 06. Painted brick wall and railing to basement flat stair
 - 07. Stair to 9 Lyndhurst Road basement flat
 - 08. Stair to 9 Lyndhurst Road GF, FF, SF flats
 - 09. 9 Lyndhurst side passage railing and gate
 - 10. Windows to 9 Lyndhurst basement flat
 - 11. Manhole 1
 - 12. Manhole 2
 - 13. Manhole 3
 - 14. Brick wall to the pavement
 - 15. Bathroom to 10B Lyndhurst Road
 - 16. Bathroom window to 10B Lyndhurst Road
 - 17. Front brick vaults below the garden
 - 18. Rear vault below the garden
 - 19. London yellow stock brick
 - 20. Brick window lintels
 - 21. Brick corbel detailing
 - 22. White painted timber sash windows
 - 23. Slate roof
 - 24. White render
 - 25. White painted decorative detail
 - 26. Neighbouring gas supply
 - 27. Downpipes
 - 28. White painted window cills
 - 29. White painted window lintels
 - 30. Decorative tile band
 - 31. Painted timber front door with glazed fanlight
 - 32. Neighbouring tree

- PROPOSED:
- 100. Entrance to The Cottage, 10 Lyndhurst Road
 - 101. Garden path
 - 102. Bin store with sedum roof
 - 103. Garden studio
 - 104. New lawn
 - 105. Raised planter
 - 106. Planting beds
 - 107. Existing tree retained
 - 108. Paved garden terrace
 - 109. Basement courtyard
 - 110. Retained and refurbished brick boundary wall
 - 111. Entrance porch with niche
 - 112. Front door
 - 113. Triple glazed windows
 - 114. Triple glazed rooflights
 - 115. Garden studio door
 - 116. Flat roof
 - 117. Standing seam metal roof
 - 118. Stone façade
 - 119. Stone lintels and cills
 - 120. Stone coping
 - 121. Gutter
 - 122. Aluminium hopper and downpipes
 - 123. Air Source Heat Pump (ASHP) with acoustic enclosure
 - 124. New bathroom window to 10B Lyndhurst Road
 - 125. New brick boundary wall
 - 126. Metal balustrade
 - 127. New brick work to match existing
 - 128. New tree
 - 129. Water butt
 - 130. Garden tool store
 - 131. New low level brick wall
 - 132. Wildflower roof with pebble margin

P01 13 05 24 Outbuilding amended

P00 13 02 24 Planning Issue

revision date amendment

MARY DUGGAN

Royle Studios, Unit 2, 23-41 Wenlock Road, London, N1 7SG +44(0)20 3327 0990
marydugganarchitects.com

DRAWING NOT FOR CONSTRUCTION. Any discrepancies to be reported to MD immediately. All areas provided are intended for illustrative purposes only. MD advise that the validity of all quantities and numbers be subject to a detailed check, audit and sign off by an RICS chartered surveyor. MD do not accept any liability for decisions or actions derived from interpretation, extrapolation or use of the areas information shown. Measurements have been calculated in accordance with the UK Government Code of Measuring Practice: Definitions for Rating Purposes. © Mary Duggan Architects 2023

LYNDHURST ROAD

Title PROPOSED ELEVATION - GARDEN & REAR

Status FOR PLANNING

Scale 1:50 @A1 / 1:100 @A3

job no source zone element drawing no. revision

MD141 A - (01) 203 P01

