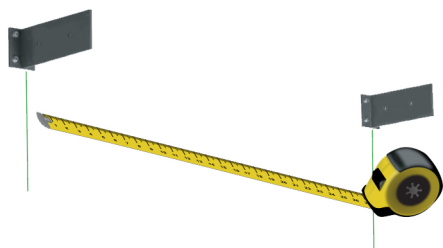


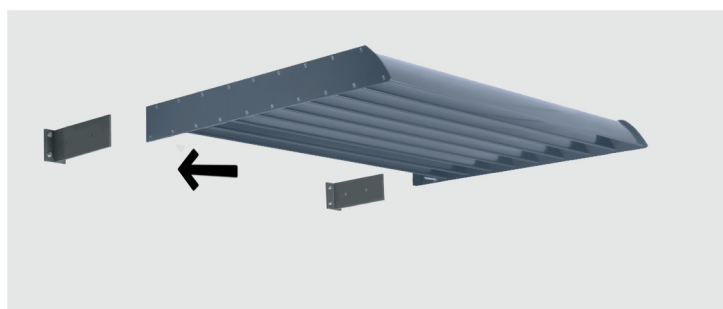
INSTALLATION GUIDE



Brackets

Use the width of your cassette to establish the spacing of the brackets. Add on an extra couple of millimeters for wiggle room.

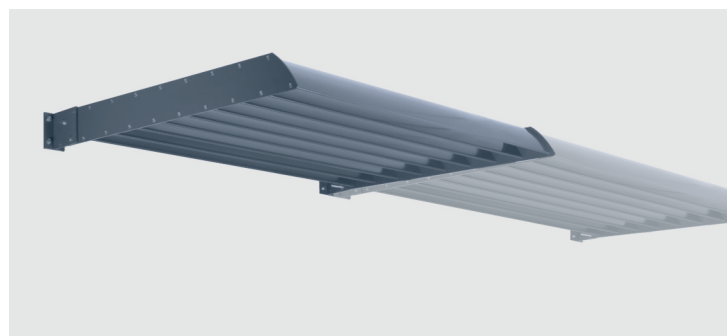
Fit all brackets to wall using suitable bolts.



Offer the cassette up inbetween the brackets and loosely fit using the supplied bolts.

You will need to push the bolts back to allow for the next canopy to be slotted into place.

Make sure the canopy is supported at this stage.



Offer up the second and subsequent canopies and loosely secure.

Bolt through with the fixing bolts. Tighten each fixing in turn, checking cassette is straight and level.

Finish by fixing the smaller bolts at the top front to join each canopy.