

**Piling Method Statement**  
**for**  
**Bird in Hand**  
**West End Lane**  
**London**  
**NW6 4NX**



## Project Summary

The site is located to the rear of the former Bird in Hand Public House on West End Lane, Kilburn, London NW6 4NX.

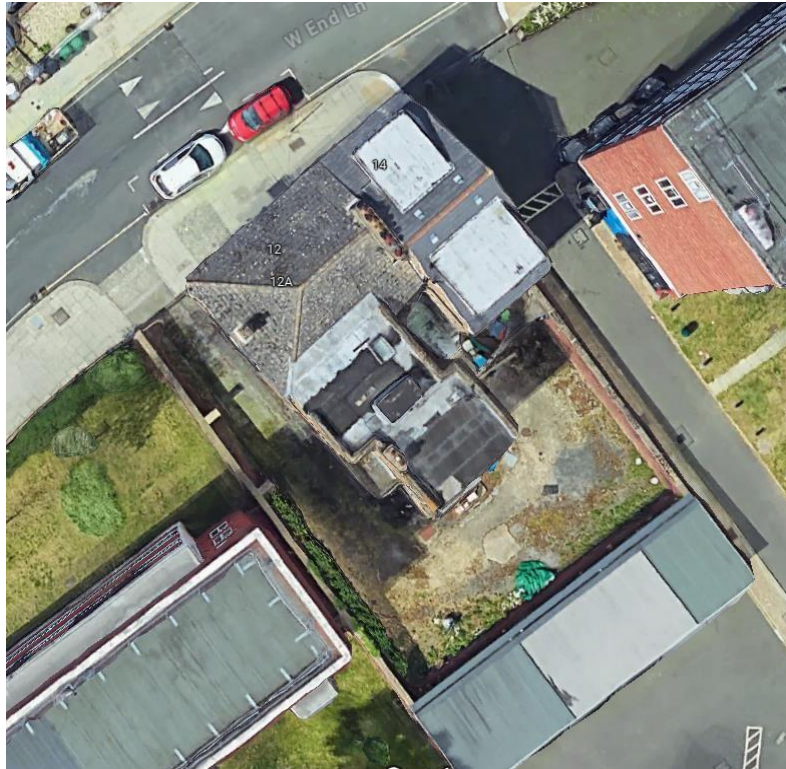


Image 1: Site Location (image courtesy of Google Maps)

The project consists of 54no piles which are 350mm diameter. The piles vary in depth with the maximum depth being 27.4m.

The piles will be flight auger piles as this is considered the most vibration-free system of piling available.

## Health & Safety

All personnel will be expected to always adhere to the site rules. PPE is to be worn as required for the task being conducted with a minimum expectation at all times that helmets, hi-vis vests and steel toe boots are worn at all times.

All personnel must attend and complete a site induction prior to commencement of any works on site.

The site operates a no smoking policy and has a zero-tolerance policy to drink and drugs. The site management may conduct random testing for drink and drugs. Any refusal to partake in testing or a failure of a test will result in the immediate removal of the operative from site.

## Logistics

We propose using a Klemm KR709-3G or similar rig to construct the piles subject to availability at the time of carrying out the works. This rig has been selected due to its size and ability to operate in tighter spaces given the natural restrictions of the project site.

The piling rig will be delivered to / removed from site by a low loader articulated lorry. The rig will be off loaded at the site entrance and brought immediately onto the site. This will all be undertaken under the supervision of a qualified Banksman. The delivery / removal operation will be carried out in compliance with the Department for Transport Safety at Street Works and Road Works – A Code of Practice 2<sup>nd</sup> Impression (with Amendments) June 2014.

The specialist transport company will ensure any matters associated with the delivery itself in terms of highway routes, timings etc are agreed with the relevant authorities at the time.

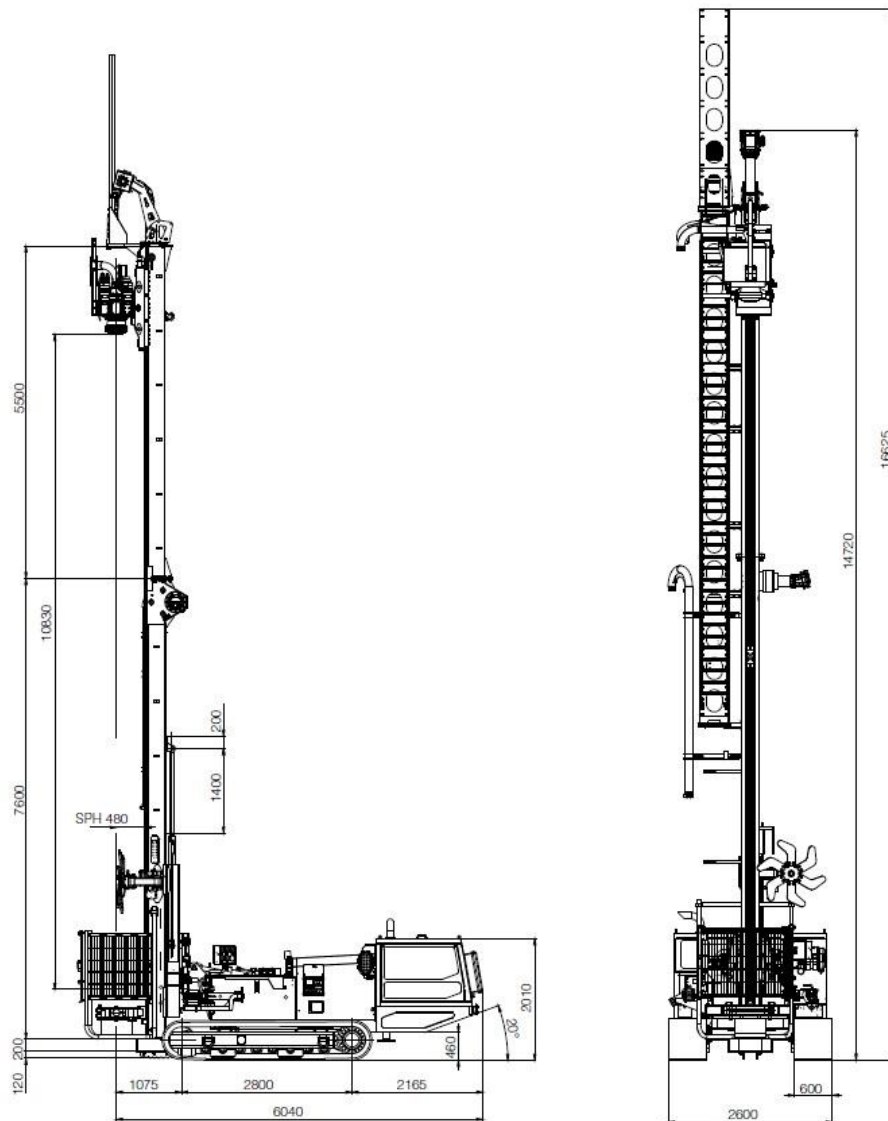


Image 2: Klemm KR709-3G operational dimensions

## **Site Set Up**

The site will be set up in line with operation requirements. When the piling activity is being carried out on site, no other trades will be working on the site.

All vehicle movements on site (piling rig / dumper / excavator) will be managed and supervised by a qualified banksman.

The delivery of materials to site will be made in accordance with the project Construction Management Plan.

The unloading and storing of materials will take place in an area to be agreed on site and relocated to suit the progress of the works. In the event that a load has become unstable during transport, the unloading will not continue until a safe means of unloading has been determined. Any unloading will be undertaken giving any necessary consideration to safeguard work at height. The banksman will be responsible for safe unloading and directing the HIAB operator as required.

The making up of reinforcement cages will all be carried out on site. The area for making up cages will be relocated as required to suit the progress of the works. The cages will be constructed on fabrication trestles by CSCS/NPORS trained personnel, working within a fabrication area on the piling mat. The attendant excavator will transport materials. As each cage is fabricated, it is removed from the fabrication trestles by hand if lightweight or by excavator if heavier. Assembled cages are to be stored on timbers or clean hardcore to avoid contamination by soil. Cages will be transported around site horizontally on two leg chains in accordance with the piling contractors procedures.

Fuels will be stored in double skin fuel bowers or Jerry Cans at a designated point agreed on site and relocated as required as the works progress.

All plant will be fitted with efficient silencers. All engines will be switched off when not in use.

The piling crew shall always maintain good housekeeping to reduce slip/trip hazards.

## Setting Out

All pile locations are to be marked out and identified by the Setting Out Engineer with considerations to drawings provided.

The location of the existing sewer is accurately determined by an earlier survey. This survey information will be provided to the site setting engineer and the piling contractor prior to works commencing on site.

The building has been modelled to ensure the sewer is bridged and an exclusion zone of 1.5m has been allowed either side of the sewer.

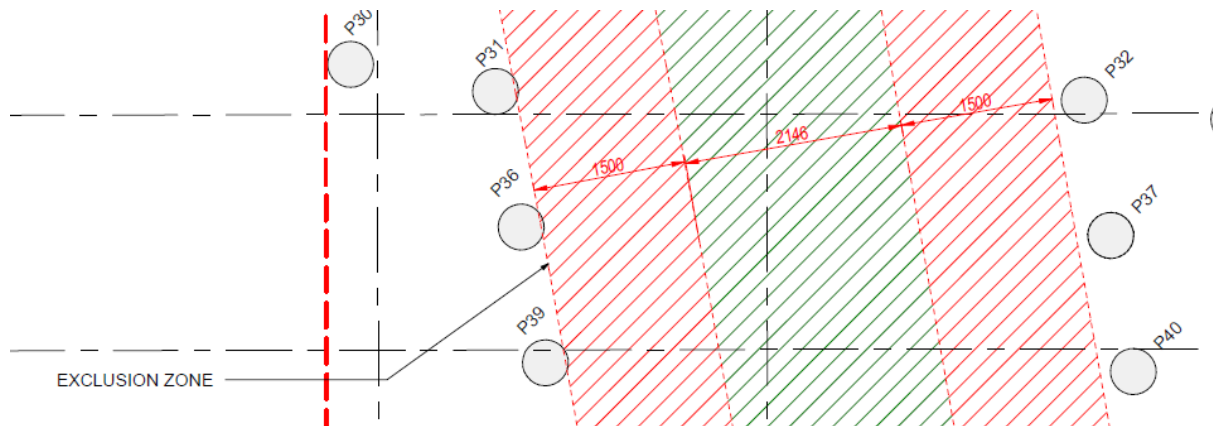


Image 3: Extract from drawings showing exclusion zone to sewer

## Installation

Two persons must be in attendance when operating or moving the rig. An exclusion zone will be established around the rig whilst in operation. Throughout the piling process the exclusion zone around the rig will be policed by the Banksman to prevent access by non-authorised persons.

Guarding fitting to rigs must remain in place throughout the piling process, only being opened to allow attendance to the auger or allow spoil to be cleared. In the event of piling not being able to be completed with guarding in place, work will stop, and further instruction sought from the Piling Manager. Any instructions must be recorded in the Guarding Risk Assessment.

The piling rig will be tracked into position under the supervision of the Banksman and the mast and auger plumbed vertical prior to drilling. The flight auger will then bore into the ground to the required design depth. Drilling will only commence once all necessary checks have been completed and it is safe to proceed.

The rig driver is responsible for making sure that no spoil that could cause injury rides up the auger above head height. Spoil will not be removed by hand when the auger is rotating. There shall be no climbing of augers.

Once the correct depth has been reached augers are to be withdrawn. During withdrawal of augers the piling team are to ensure that the working area is kept clear of unauthorised personnel. Once the auger has been extracted the rig will track off the pile position under the supervision of the Banksman. The attendant excavator will clear the spoil from the pile position to a stockpile for disposal.

The reinforcement cage is then lifted into position and lowered the excavator into the pile bore. The concrete is placed in the pile bore to the required level as per the design. Plastic protective caps will be placed on the tops of the reinforcing to aid visibility and prevent injury.

### **Recording of Activity**

Activity is to be recorded and reported to the Project Manager on a daily basis in the daily site report. This will include the information relating to the actual installation of the piles for record purposes.

All variations from the design are to be included in the daily site report.

All reports are to be available as and when requested.

### **Special Considerations**

The piles will have a sleeve on the upper section of the pile to reduce skin friction with the ground adjacent to the sewer. The extent of the sleeving to be as determined under detailed piling design.

The piles will have de-bonding foam to the top of the pile to reduce the amount of breaking down of pile heads thus reducing noise and dust arising from the same.

In the event of obstructions being found preventing the piling rig from boring in the design location, the obstruction will either be broken out or the pile relocated as directed by the design engineer.