

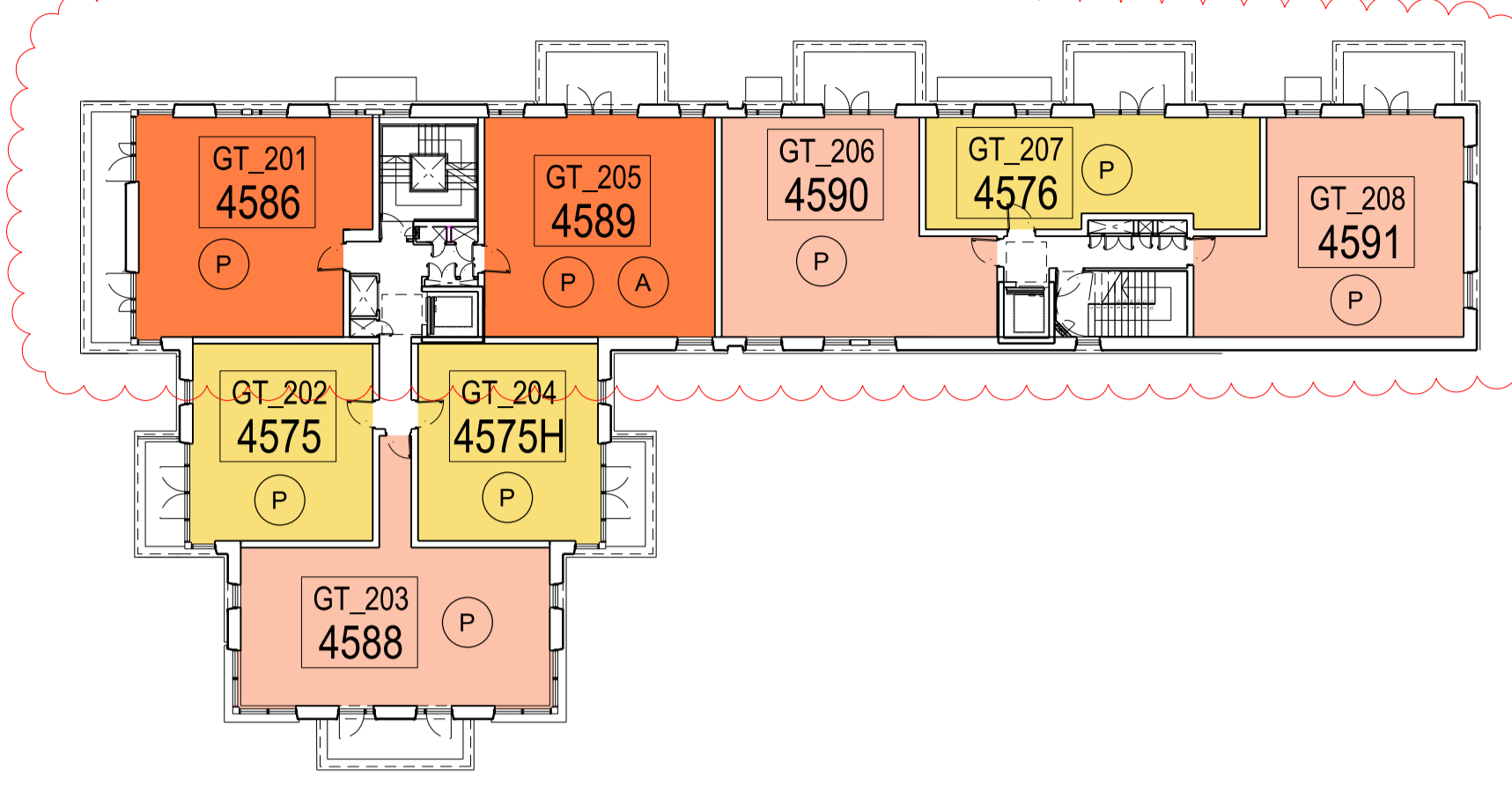
SAFETY, HEALTH AND ENVIRONMENTAL INFORMATION:
 IN ADDITION TO THE HAZARDS / RISKS NORMALLY ASSOCIATED WITH THE TYPES OF WORK DETAILLED ON THE DRAWINGS, NOTE THE FOLLOWING:
 Significant Residual Risk:
 Action to be Taken:
 Refer to Health and Safety Plan

NOTES:
 FOR FULL ACCOMMODATION SCHEDULE REFER TO:
 MPI_ZZ_ZZ_SC_A_1900

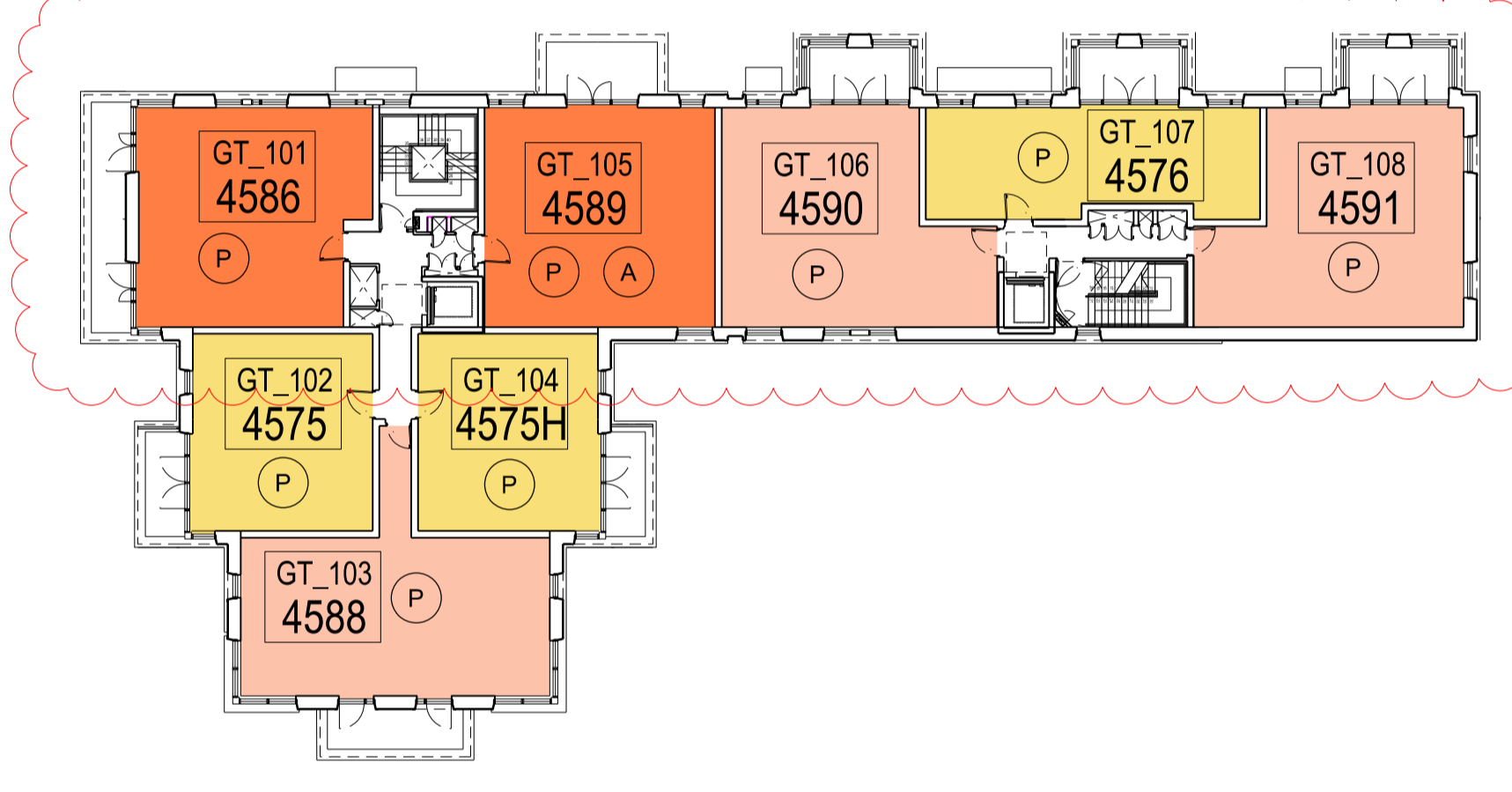
REV	DATE	DETAIL	DRN	CHK
PL01	25.08.17	MMA Planning Submission: New drawing for no comment.	HD	AA
PL02	06.09.19	Draft MMA Planning Submission	HD	AA
PL03	20.09.19	Draft MMA Planning Submission	HD	AA
PL04	27.09.19	MMA Planning Submission	HD	AA
PL05	27.09.19	MMA Planning Submission	HD	AA
PL06	24.10.19	Draft MMA Planning Submission	HD	AA
PL07	07.11.19	Draft MMA Addendum	HD	AA
PL08	08.11.19	MMA Addendum	HD	AA
PL09	26.11.19	MMA Addendum update	HD	AA
PL10	13.02.20	MMA Addendum update	HD	AA

Note. ALL PRIVATE UNITS

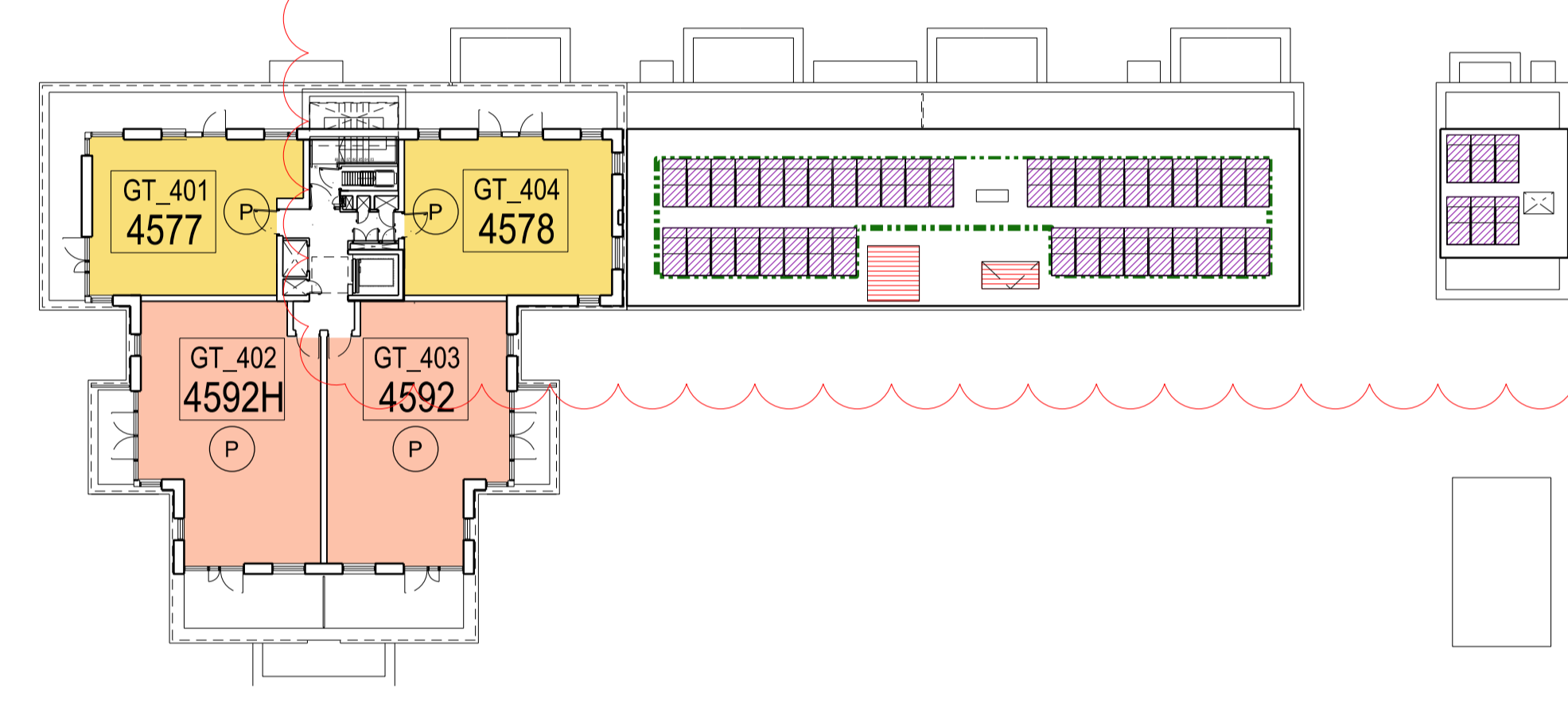
no.	KEY			
8		1 bed 2 person unit		TRA Hall
5		2 bed 3 person unit		Plant/Service
13		2 bed 4 person unit		Adaptable Wheelchair
2		3 bed 5 person unit		Accesible Wheelchair
0		4 bed 5 person unit		Private Tenure (if not noted then assume Social rent tenure)
1		4 bed 6 person unit		Block ID
total				Plot No.
29				Sheet Number
				Entrance location



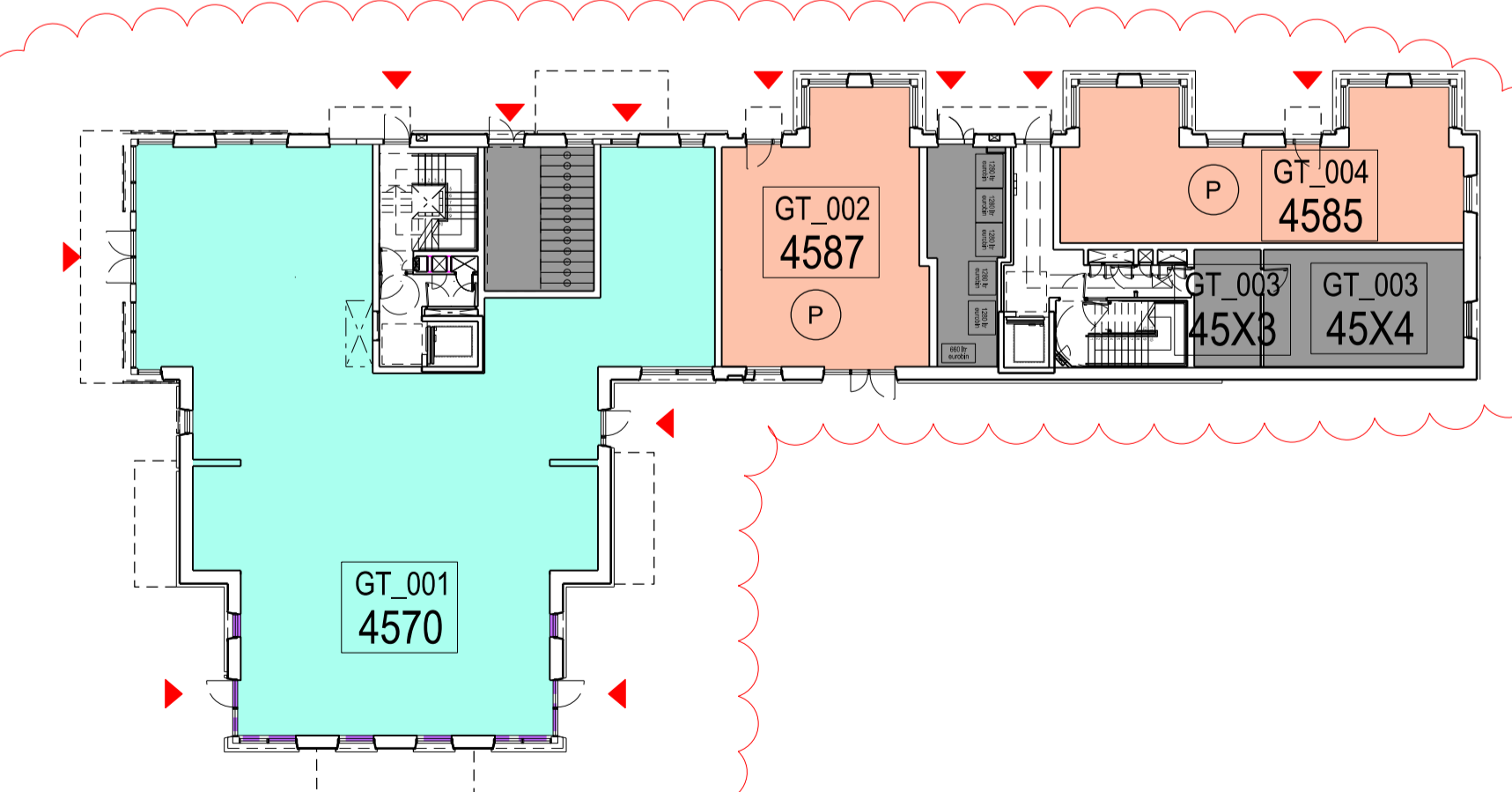
C SECOND FLOOR PLAN
1102



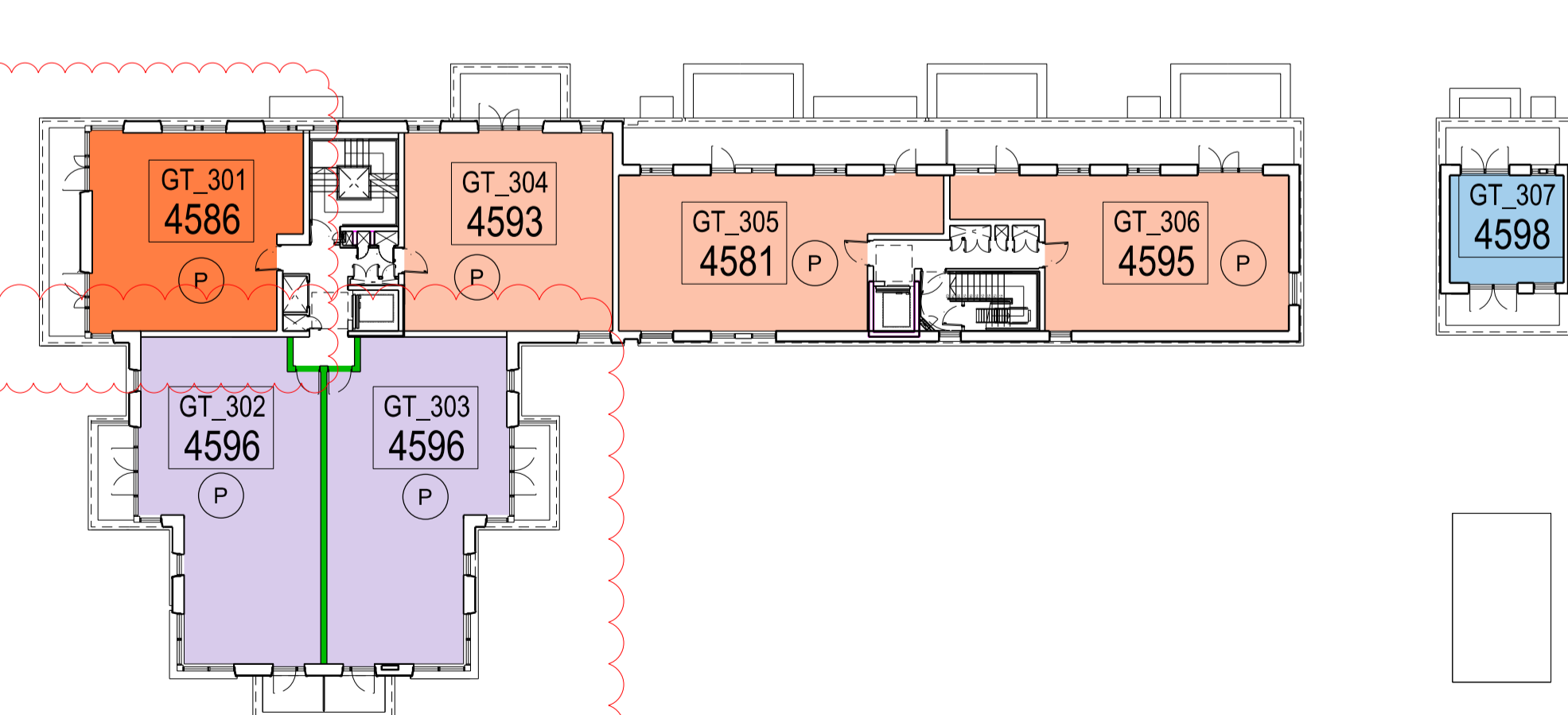
B FIRST FLOOR PLAN
1102



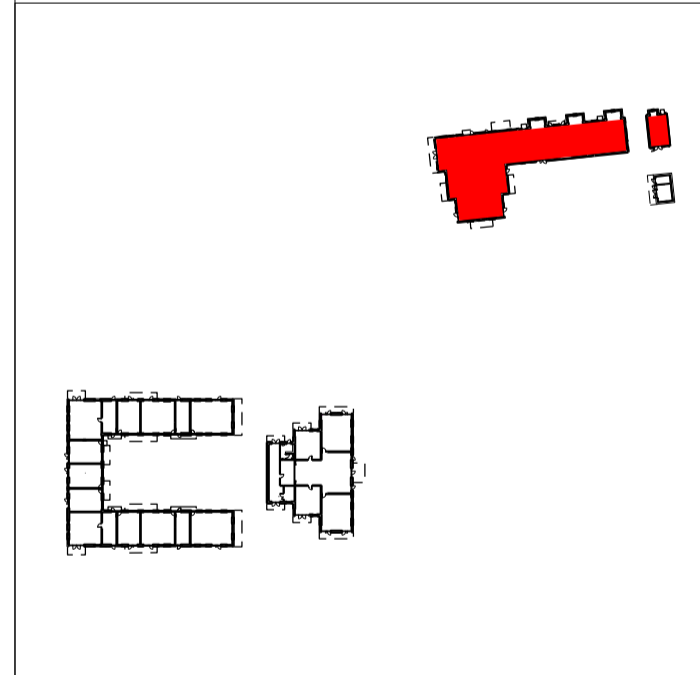
E FOURTH FLOOR PLAN
1102



A GROUND FLOOR PLAN
1102



D THIRD FLOOR PLAN
1102



PROJECT TITLE
MAITLAND PARK

DRAWING TITLE
GRAFTON TERRACE UNIT AREA SCOPING PLAN MMA -2019

DATE 16.04.2024	SCALE 1:500 @ A3 1:250 @ A1	
STATUS PLANNING	DRAWN HD	CHECKED AA

DRAWING NUMBER MPI-P_502	REVISION PL11
------------------------------------	-------------------------

CULLINAN STUDIO
 5 BALDWIN TERRACE LONDON N1 7RU TEL: 020 7704 1975
 PROJECT EMAIL: mailand@cullinastudio.com

© CULLINAN STUDIO LTD 2022