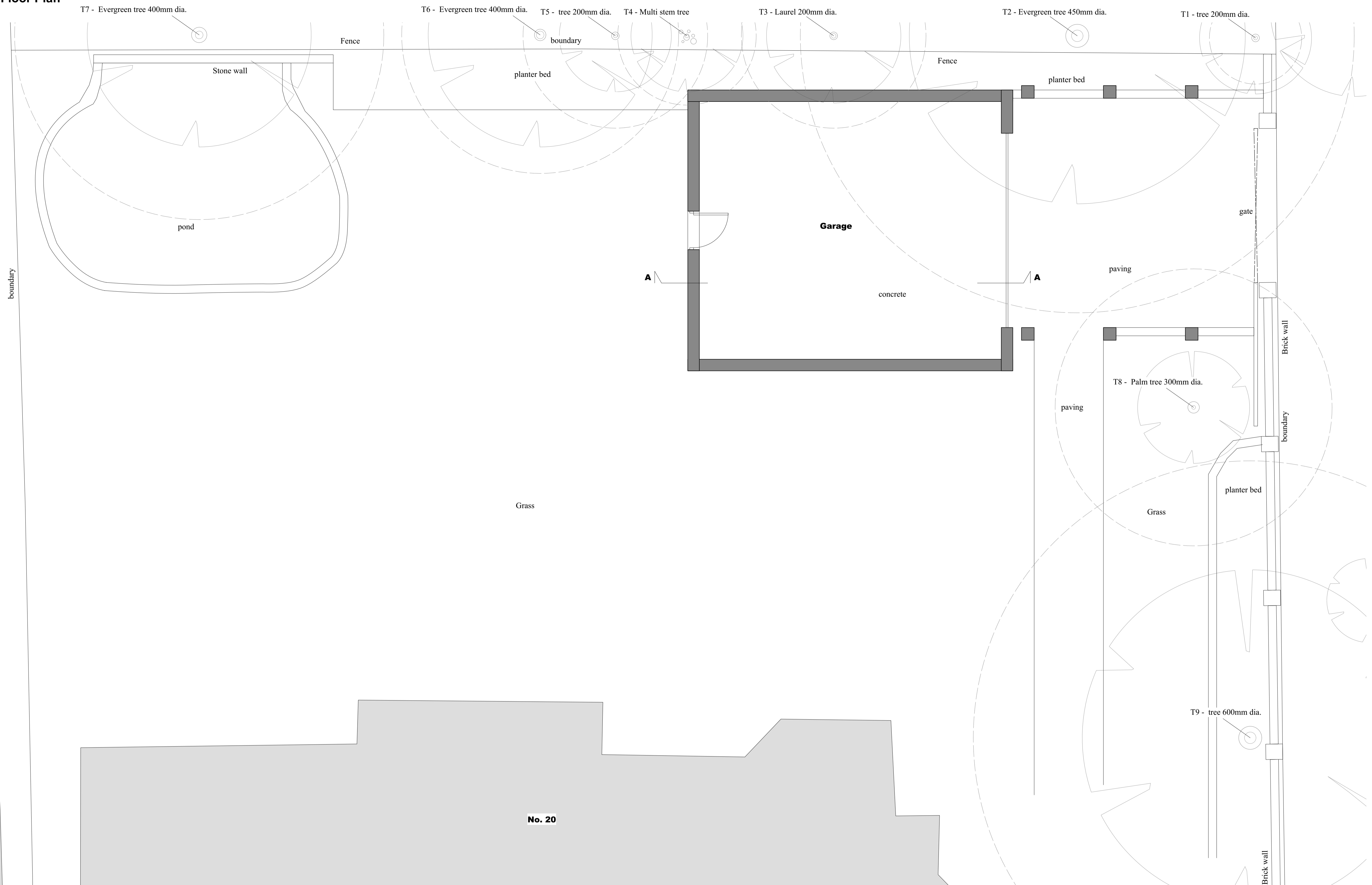
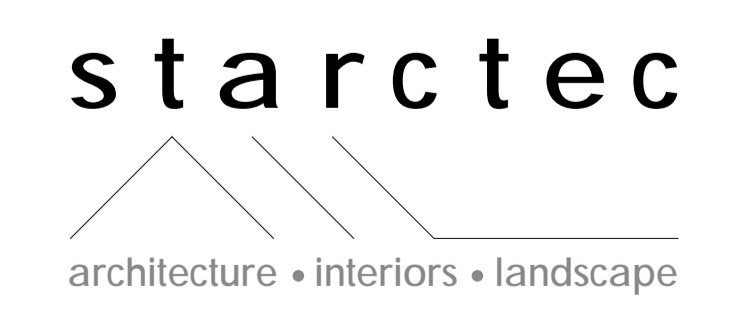


Existing Ground Floor Plan



Planning Stage Issue. 22/04/24 SWT C
 Preliminary Issue. 06/03/24 SWT B
 Preliminary Issue. 16/02/24 SWT A
 details | date | by rev



Flat 1, 20 Heath Drive, London, NW3 7SL
Existing Plan | **Drg. No. 593 S 100-C**

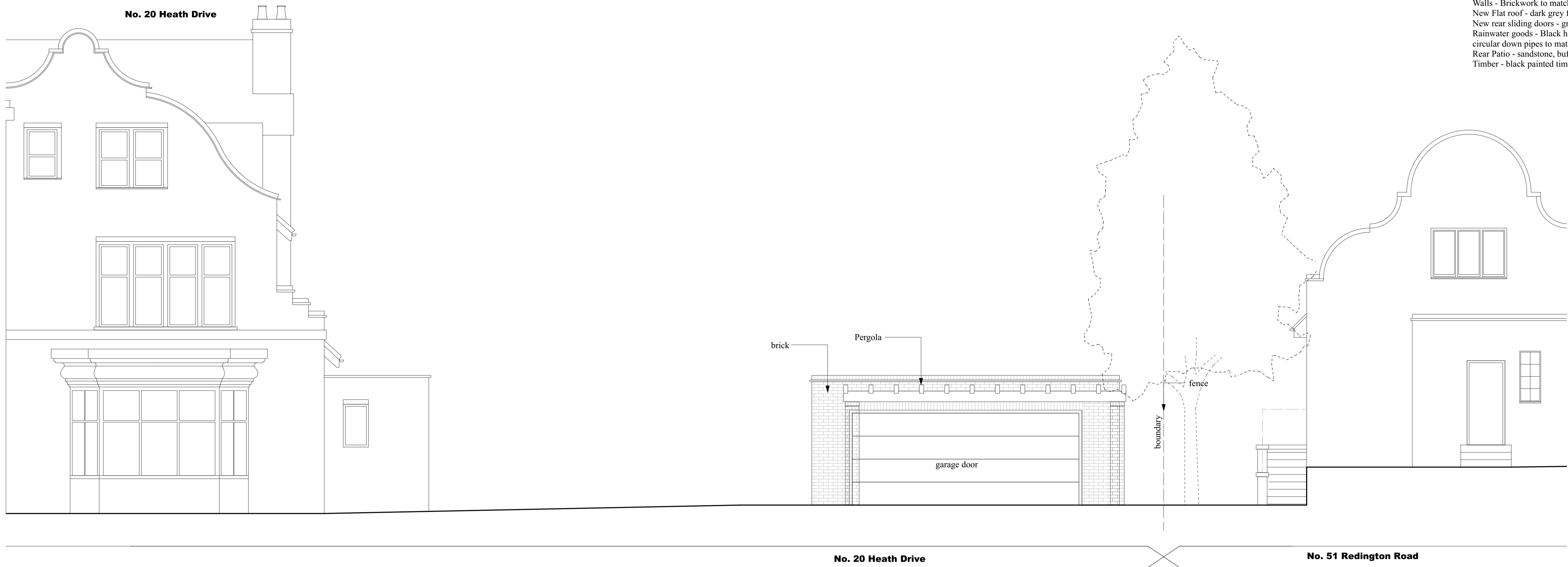
0 0.5 1.0 1.5 2.0 2.5 M
 Scale 1:50 @A1



88 Netherlands Road • London • EN5 1BU
 T: +44 (0)208 492 1433 E: office@starctec.co.uk
 Scale 1:50@A1
 This drawing is copyright © 2022 Starctec Ltd.
 Follow the drawings exactly. If you find errors or omissions ask for clarification. Do not proceed without revised instructions. No dimensions to be scaled

Proposed Materials Key:

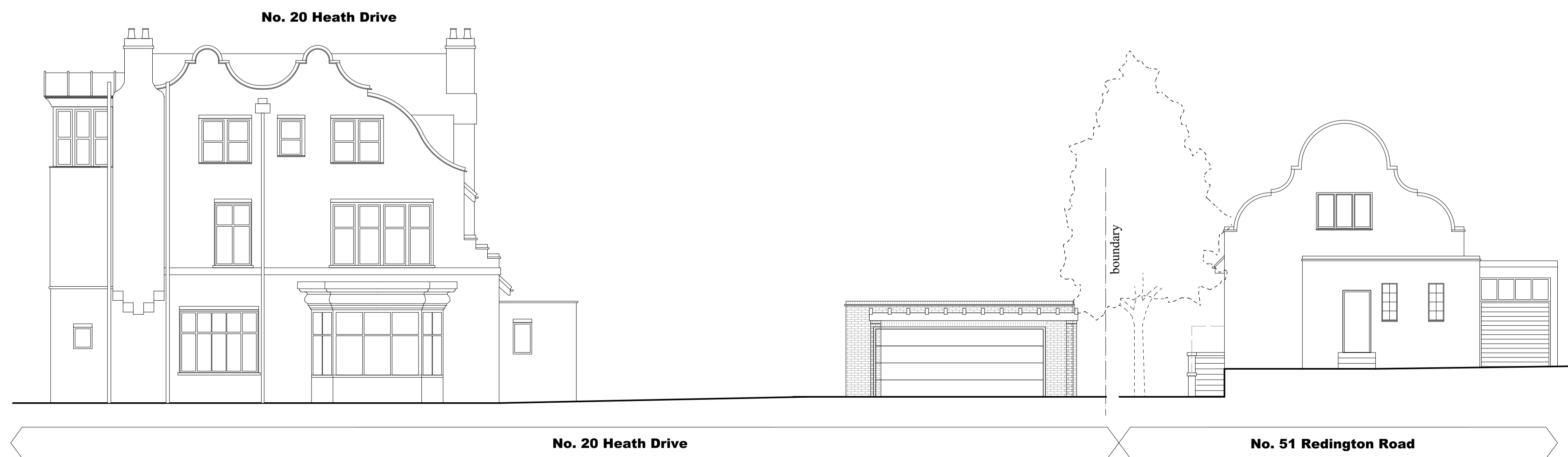
- Walls - Brickwork to match the existing.
- New Flat roof - dark grey flat roof waterproofing.
- New rear sliding doors - grey aluminium.
- Rainwater goods - Black half round profile and circular down pipes to match the existing.
- Rear Patio - sandstone, buff colour.
- Timber - black painted timber.



Existing Northeast Elevation

0 1.0 2.0 3.0 4.0 5.0 M

Scale 1:50 @ A1



Existing Northeast Elevation

0 1.0 2.0 3.0 4.0 5.0 M
Scale 1:100 @ A1

Planning Stage Issue. 22/04/24 SWT C
Preliminary Issue. 06/03/24 SWT B
Preliminary Issue. 19/02/24 SWT A

details | date | by | rev

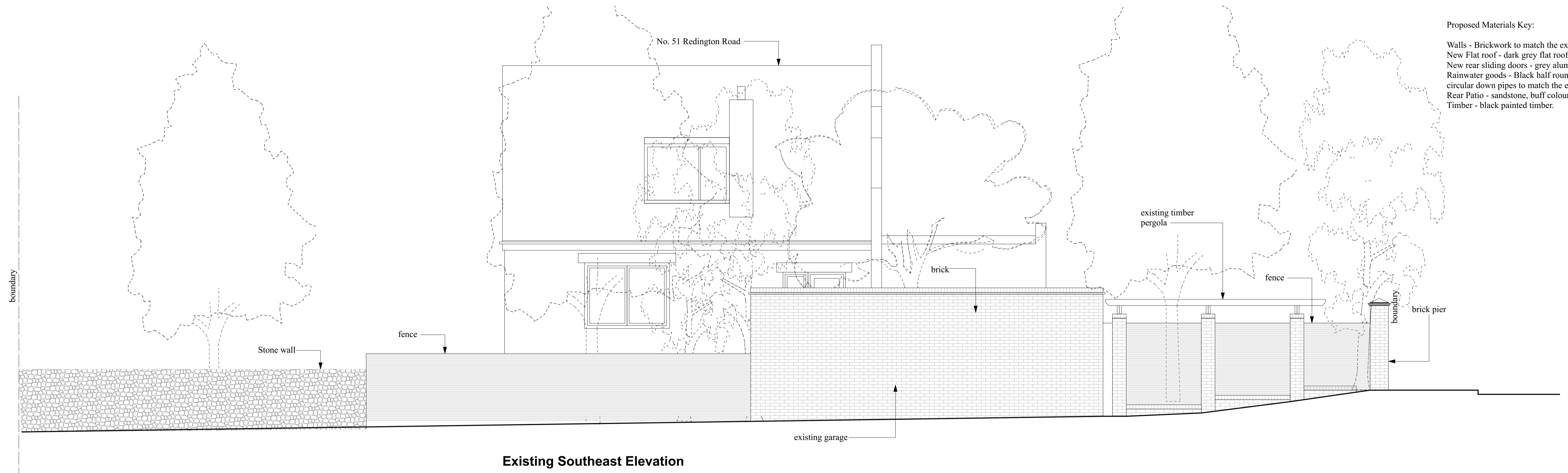
starctec

architecture • interiors • landscape

Flat 1, 20 Heath Drive, London, NW3 7SL
Existing Elevations | Drg. No. 593 S 101-C

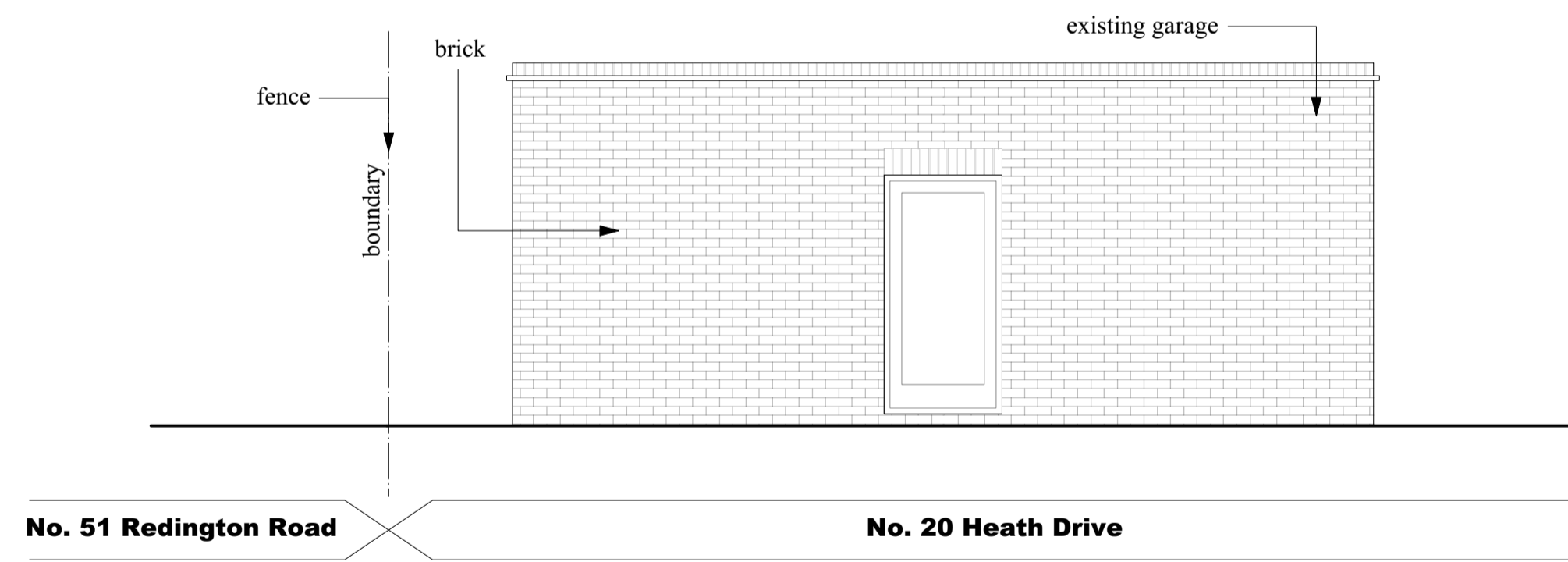
88 Netherlands Road • London • EN5 1BU
T: +44 (0)208 492 1433 E: office@starctec.co.uk
Scale 1:50@A1
This drawing is copyright © 2022 Starctec Ltd.
Follow the drawings exactly. If you find errors or omissions ask for clarification. Do not proceed without revised instructions. No dimensions to be scaled

Existing Elevations

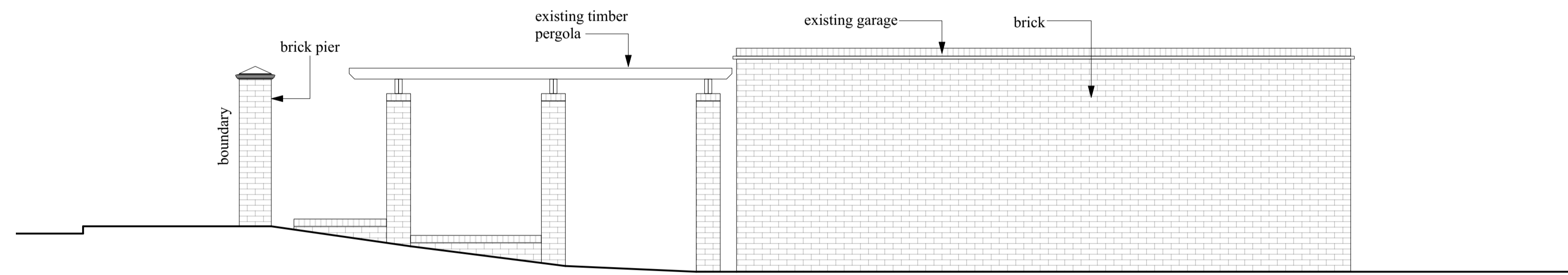


Proposed Materials Key:
 Walls - Brickwork to match the existing.
 New Flat roof - dark grey flat roof waterproofing.
 New rear sliding doors - grey aluminium.
 Rainwater goods - Black half round profile and circular down pipes to match the existing.
 Rear Patio - sandstone, buff colour.
 Timber - black painted timber.

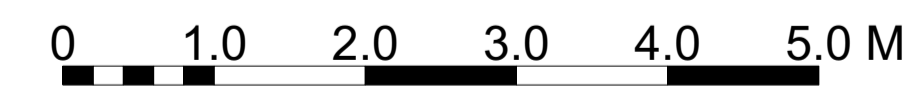
Existing Southeast Elevation



Existing Southwest Elevation



Existing Northwest Elevation



Scale 1:50 @ A1

starctec
 architecture • interiors • landscape

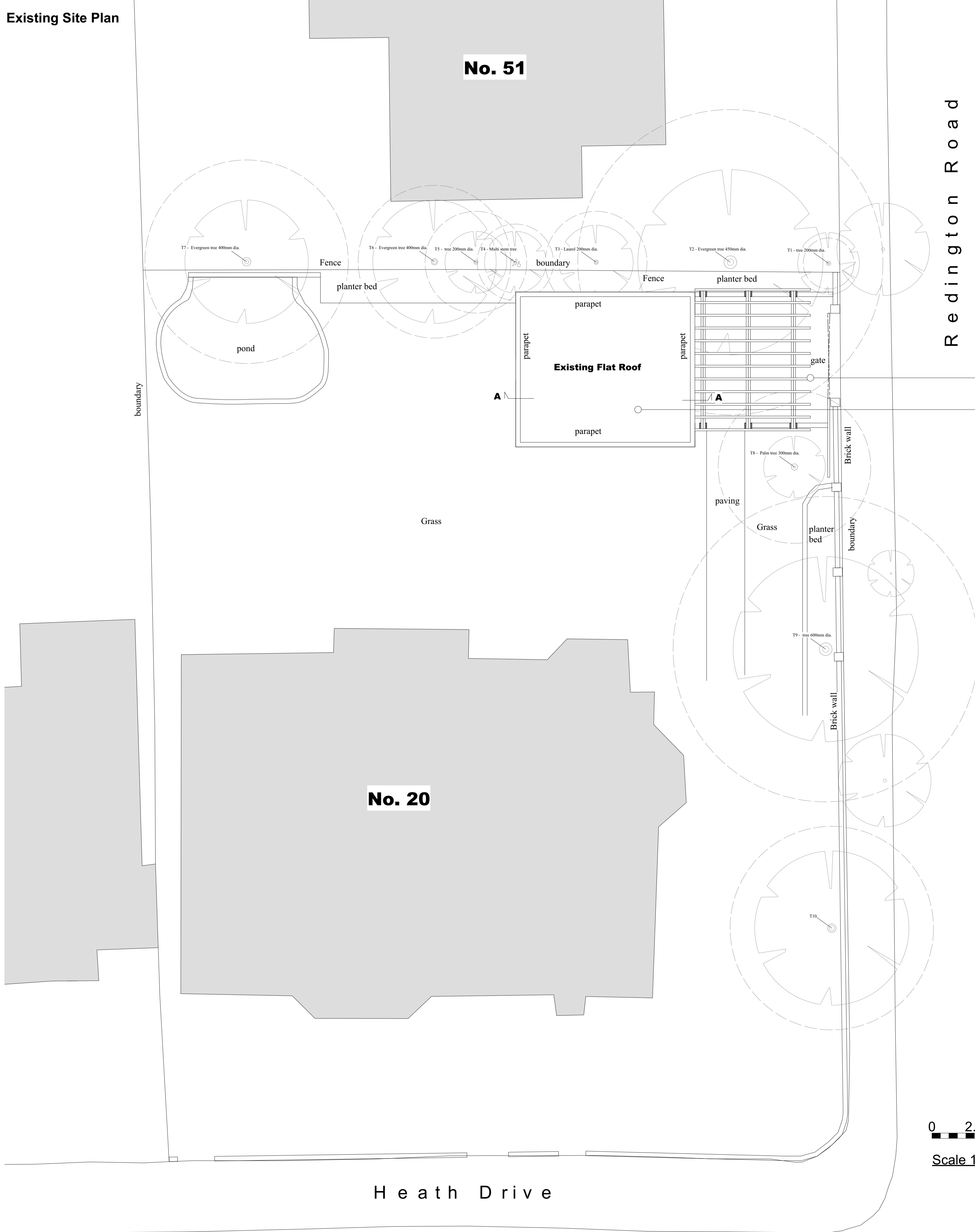
Planning Stage Issue. 22/04/24 SWT C
 Preliminary Issue. 06/03/24 SWT B
 Preliminary Issue. 19/02/24 SWT A

details | date | by | rev

Flat 1, 20 Heath Drive, London, NW3 7SL
Existing Elevations | **Drg. No. 593 S 102-C**

88 Netherlands Road • London • EN5 1BU
 T: +44 (0)208 492 1433 E: office@starctec.co.uk
 Scale 1:50@A1
 This drawing is copyright © 2022 Starctec Ltd.
 Follow the drawings exactly. If you find errors or omissions ask for clarification. Do not proceed without revised instructions. No dimensions to be scaled

Existing Site Plan

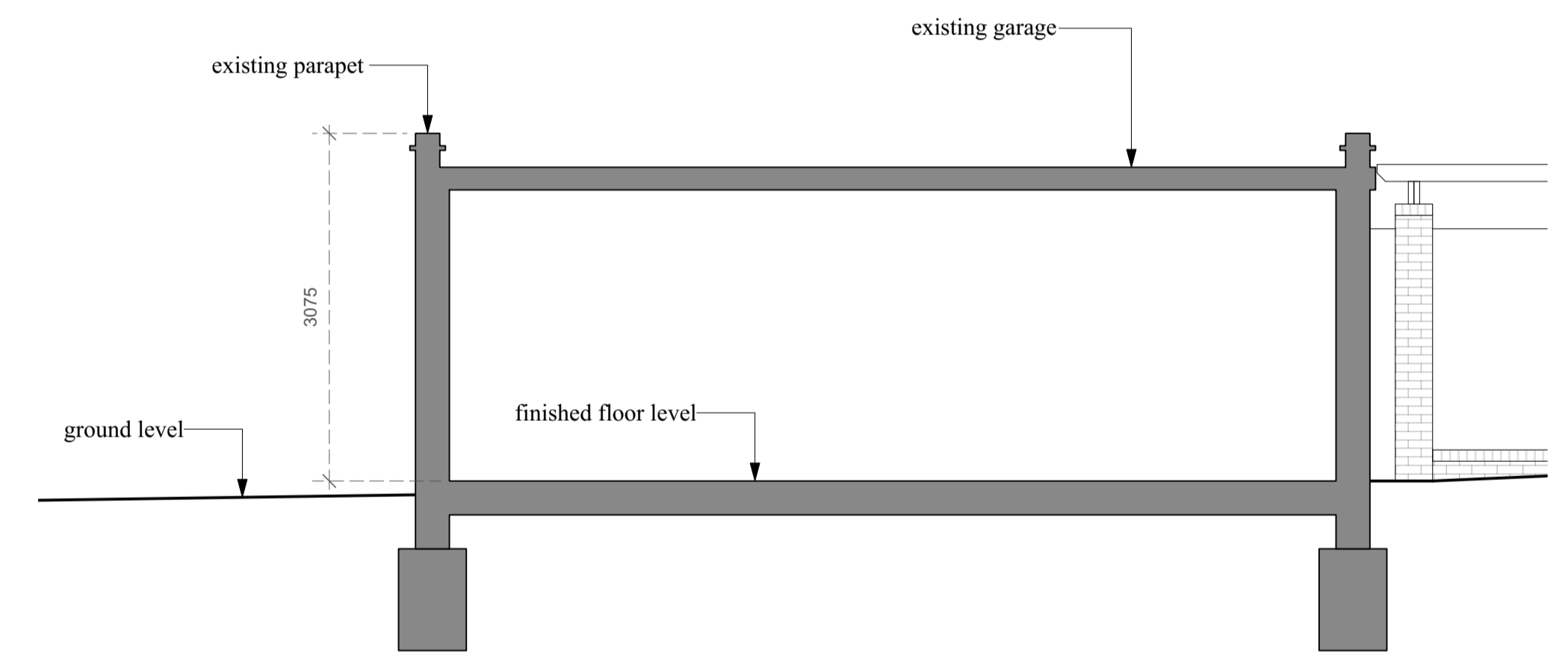


Redington Road

No. 20

No. 51

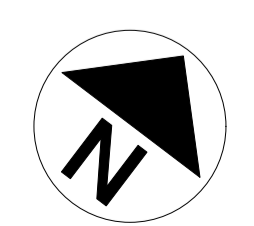
Existing pergola
Existing Garage



Existing Section A-A

0 0.5 1.0 1.5 2.0 2.5 M
Scale 1:50 @ A1

0 2.0 4.0 6.0 8.0 10.0 M
Scale 1:50 @ A1



Planning Stage Issue. 22/04/24 SWT C
Preliminary Issue. 06/03/24 SWT B
Preliminary Issue. 16/02/24 SWT A
details | date | by rev

starctec
architecture • interiors • landscape

Flat 1, 20 Heath Drive, London, NW3 7SL
Existing Site Plan & Section | Drg. No. 593 S 103-C

88 Netherlands Road • London • EN5 1BU
T: +44 (0)208 492 1433 E: office@starctec.co.uk
Scale 1:50 & 1:100@A1
This drawing is copyright © 2022 Starctec Ltd.
Follow the drawings exactly. If you find errors or omissions ask for clarification. Do not proceed without revised instructions. No dimensions to be scaled

Heath Drive