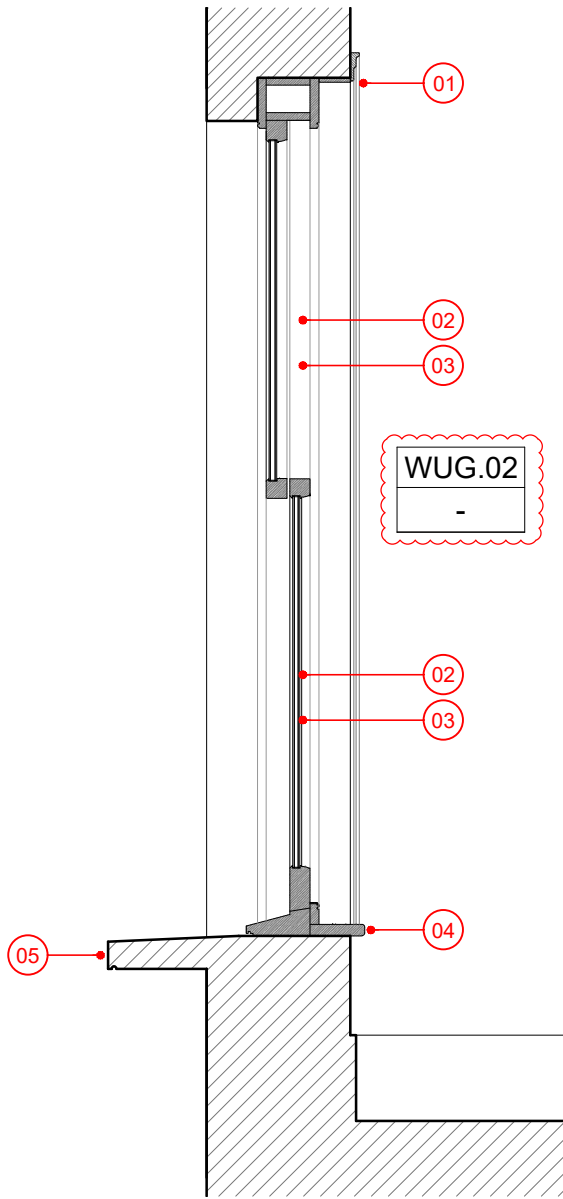
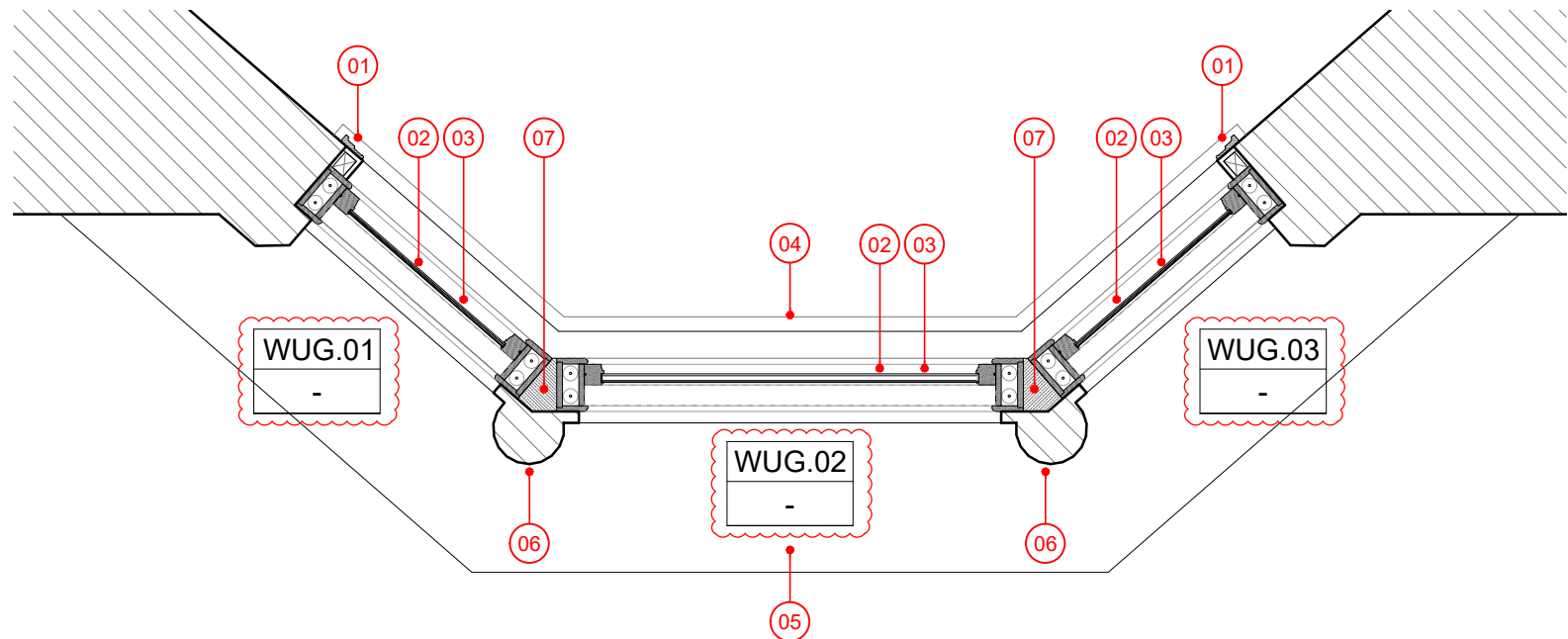


PARTIAL ELEVATION - FRONT BAY WINDOW (WUG.02)
1:20 @ A3



SECTION - FRONT BAY WINDOW (WUG.02)
1:20 @ A3



PLAN - UPPER GROUND FLOOR FRONT BAY WINDOWS (WUG.01 - WUG.03)
1:20 @ A3



EXISTING PHOTO - FRONT BAY WINDOW
(WUG.01 - WUG.03)

NOTES

- 01 Internal softwood architrave, painted finish.
- 02 Double-glazed window pane.
- 03 Softwood vertical sliding sash with profiles to match existing, painted finish.
- 04 Softwood internal cill, painted finish.
- 05 Existing external cill to be retained.
- 06 Stucco column to bay window.
- 07 Timber corner post set behind existing column,

Rev	Date / Info
PLANNING ISSUE - 15/04/2024	
REV A - 08/05/2024 (REVISED AS BUBBLED)	
- WINDOW REFERENCE NUMBERS ADDED TO PROPOSED NEW SASH WINDOWS AND PHOTO OF EXISTING WINDOWS ADDED	

<div><div>MARTYN CLARKE ARCHITECTS</div><div>78 CROUCH HILL LONDON N6 9EE 0207 263 7121 www.mcarchitects.co.uk</div></div>		
Project	Rod Mcleod Flats 2 & 3, 13 South Hill Park Gardens London, NW3 2TD	Project No. 6277
Date	January 2024	Drawing No. 6277_03_500
Scale / Format	1:20 @ A3	
Drawing Name	PROPOSED WINDOW DETAILS 01	PLANNING
Revision	A	

