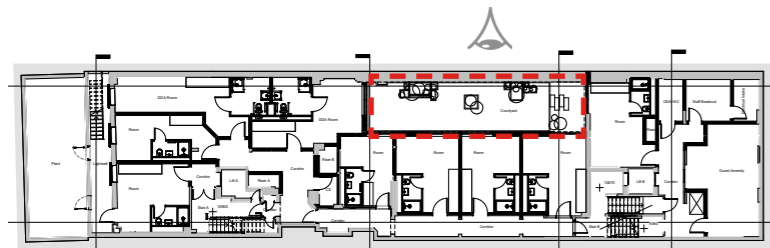


## 5.10 'LINK' STRUCTURE COURTYARD ELEVATIONS

A green courtyard area will be implemented, the aim being, to improve guest wellbeing and quality of stay through visual connection to nature.

A simple facade treatment is proposed to not overpower the planted area. A GRC (Glass Reinforced Concrete) rain screen system expresses the existing structural grid of the building and creates a visual separation between the rooms. A darkened metal panellised system is proposed to infill the grid. This earthy tone of the proposed material works in synergy with the planting to instil a peaceful feeling within the urban fabric of London.



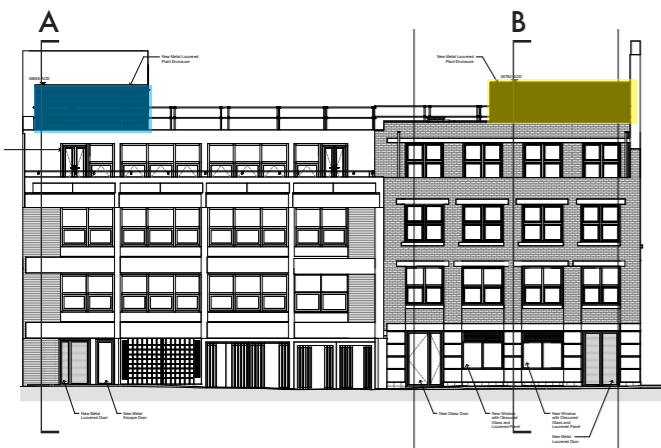
# 5.11 PLANT CONSOLIDATION

In pre application 02 Planning Officers raised potential concerns with the visibility of the proposed plant equipment on the roof of Jockey's Fields. Sections A and B show that the plant is setback at roof level to reduce visibility from street level.

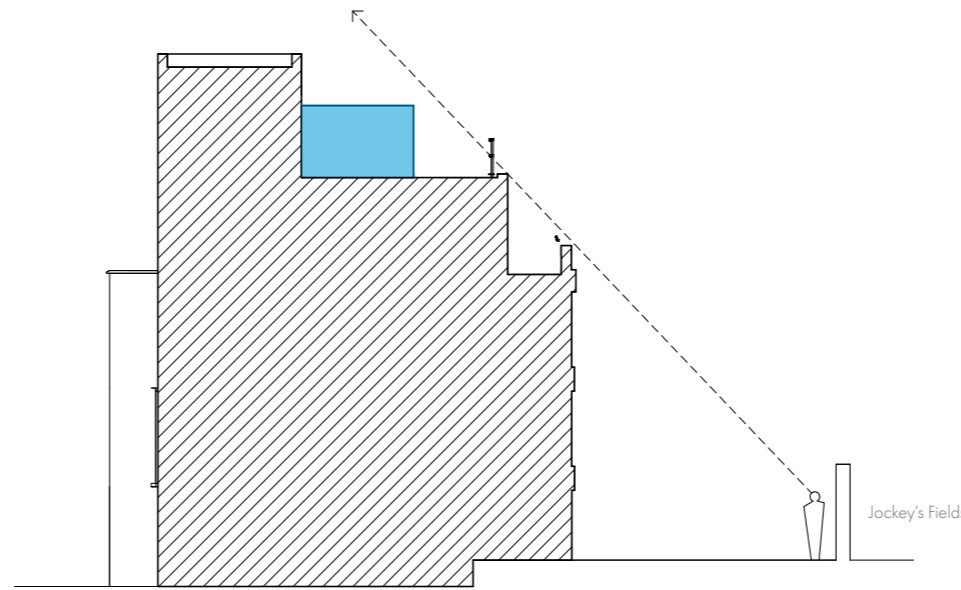
By consolidating the plant space here, surrounding tenants and owners have improved outlook from their windows. Acoustic plant screening is implemented to reduce noise pollution and helps to conceal unappealing visual elements.



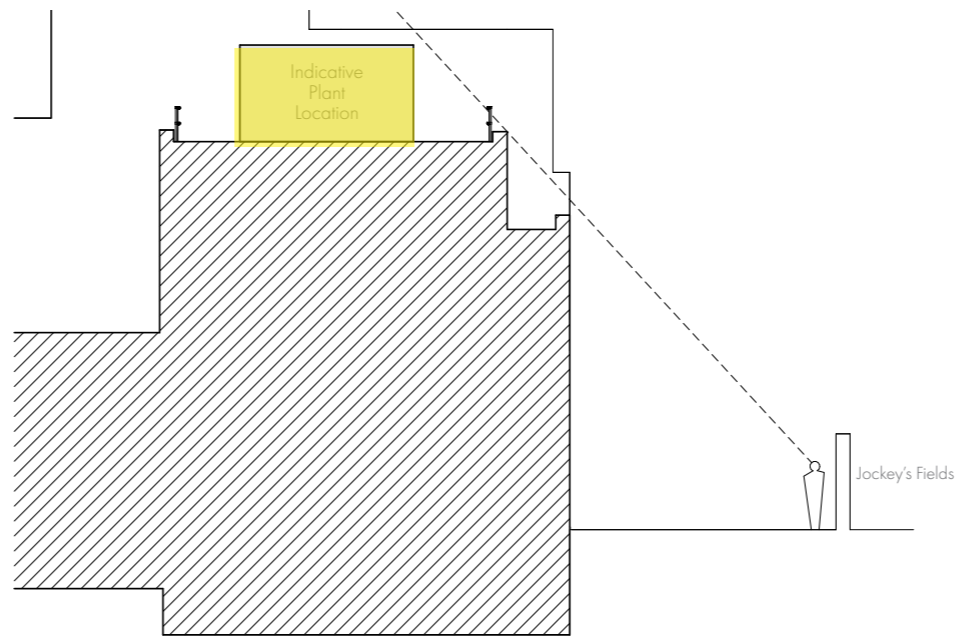
Side Elevation of Jockey's Fields



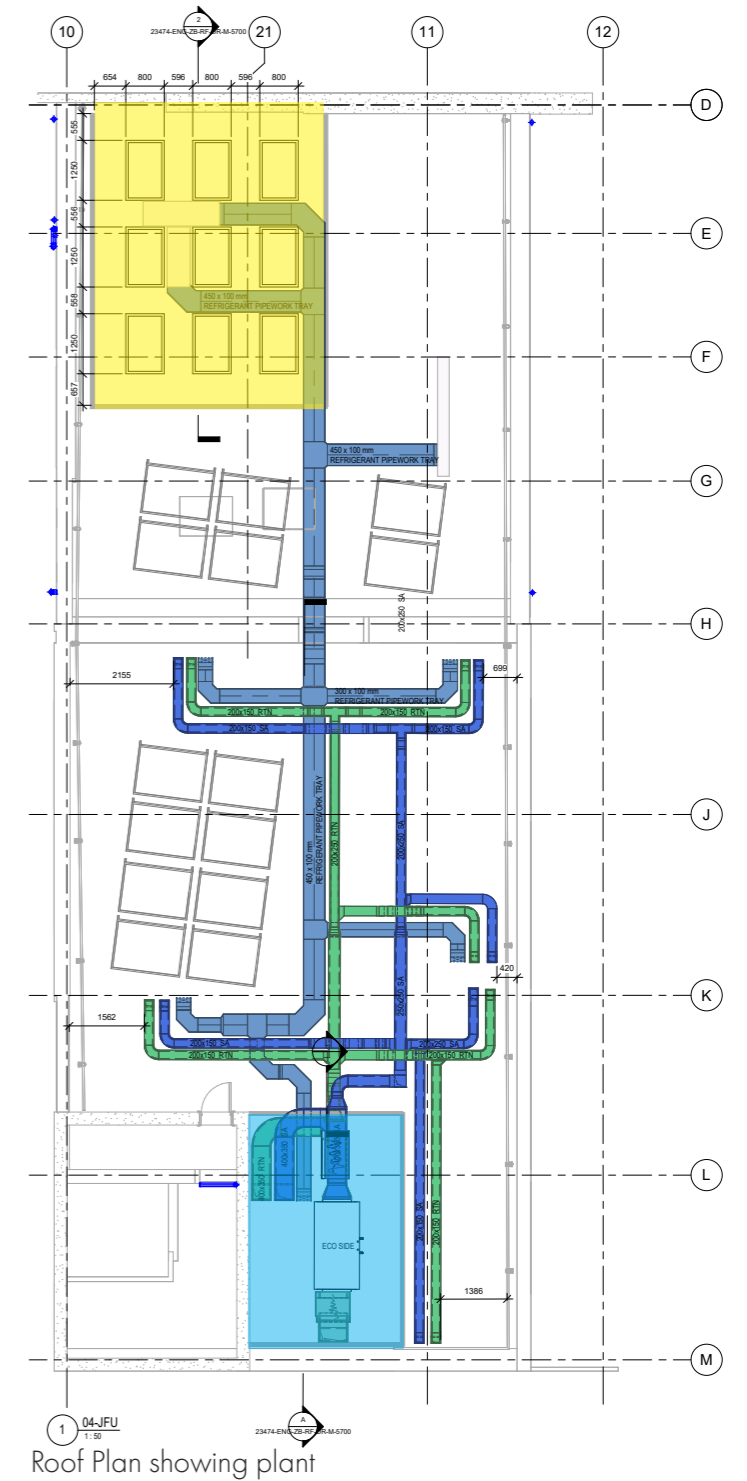
Front Elevation of Jockey's Fields



Section A - 12-13 Jockey's Fields



Section B - 14 Jockey's Fields



Roof Plan showing plant