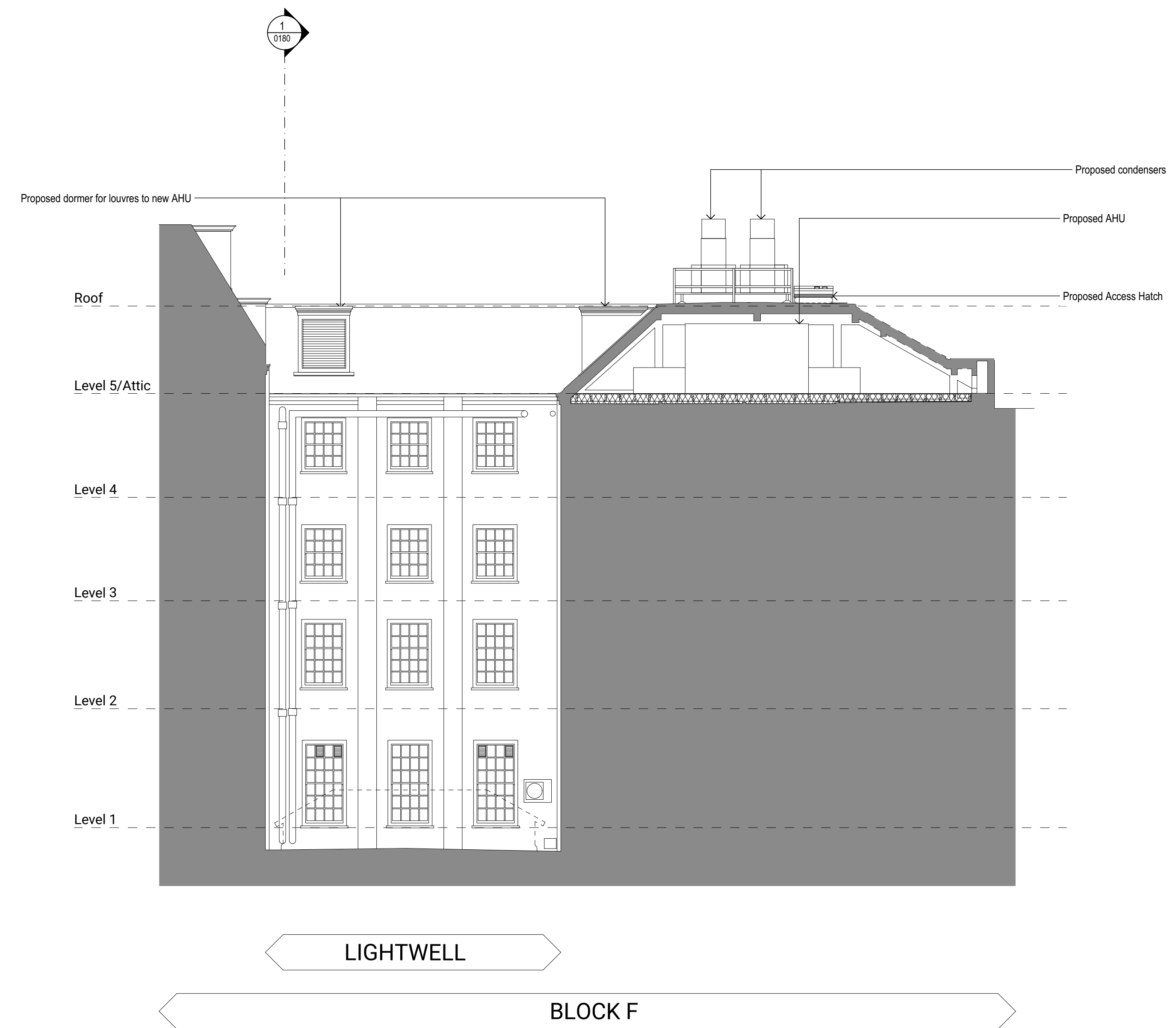
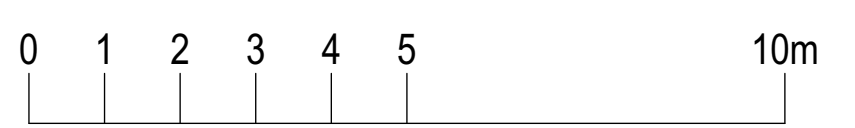


1 Proposed North-East Elevation
SCALE 1:100



2 Proposed North-West Elevation
SCALE 1:100



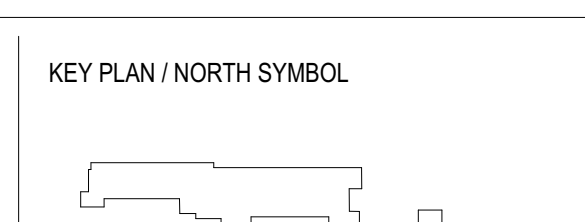
This document and its design content is © John Robertson Architects Ltd. It shall be used in conjunction with all other associated project information including models, specifications, schedules and related consultants documents. Do not scale from documents. All dimensions to be checked on site. Immediately report any discrepancies, errors or omissions on this document to the Originator. If in doubt ASK.

Source File: BMAHouse_17582623 - BMAHouse.dwg for Archv20211999-BMA-House1998-JRA-02-ZZ-M3A-001_BMA House Team Model_WORKSTREAM2

Rev	Date	Dwn	Chk	Description
P01	02/02/2023	PP	LM	For Information
P02	17/07/2023	PP	LM	For Information Layout Update
P03	24/07/2023	PP	LM	For Planning
P04	10/04/2024	PP	LM	For Planning Layout Update

Rev	Date	Dwn	Chk	Description

Rev	Date	Dwn	Chk	Description



111 Southwark Street,
London, SE1 1JF
02076335100
www.jra.co.uk
enquiries@jra.co.uk

Project
Tavistock House WS2
London

Client
British Medical Association

BMA House, Tavistock Square,
London, WC1H 9JF
0200 123 1233
bma@bma.org.uk

Drawing Title
Block F - Proposed Lightwell Elevations

Scale 1:100 @ A0 Internal Project No. 1998

Dwg No. **1998-JRA-02-ZZ-DR-A-0180**

Suitability FOR INFORMATION S0

Revision FOR PLANNING **P04**