



General Arrangement Notes

- Not in scope
- Area in scope
- Area not surveyed

This document and its design content is © John Robertson Architects Ltd. It shall be read in conjunction with all other associated project information including models, specifications, schedules and related consultants documents. Do not scale from documents. All dimensions to be checked on site. Immediately report any discrepancies, errors or omissions on this document to the Originator. If in doubt ASK.

Source File: BIMModel: STGBM23 - BIMModel: BMA House WS2-1998-JRA-02-02-M5-A-0001  
\_BMA House Team Model\_WORKSTREAM2

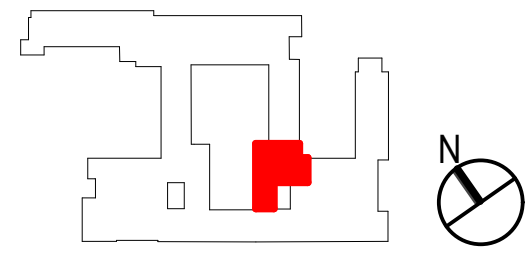
Rev	Date	Dwn	Chk	Description
P01	10/10/2023	PP	LM	For Planning
P02	10/04/2024	PP	LM	For Planning

Layout Update

Rev	Date	Dwn	Chk	Description
-----	------	-----	-----	-------------

Rev	Date	Dwn	Chk	Description
-----	------	-----	-----	-------------

KEY PLAN / NORTH SYMBOL



**JRA**  
John Robertson Architects  
111 Southwark Street,  
London, SE1 1UF  
02076335100  
www.jra.co.uk  
enquiries@jra.co.uk

Project  
Tavistock House WS2  
London  
Client  
British Medical Association  
BMA House, Tavistock Square,  
London, WC1H 9JP  
0200 123 1233  
BMA@bma.org.uk

Drawing Title  
Block F - Proposed Fifth Floor Plan (Attic)  
Scale  
1:50 @ A0  
Internal Project No. 1998  
Dwg No.  
1998-JRA-02-05-DR-A-0195  
Suitability  
FOR INFORMATION  
Revision  
FOR PLANNING  
S2  
P02