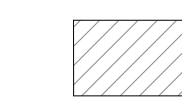
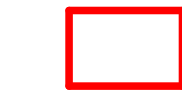

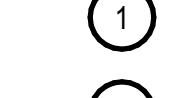


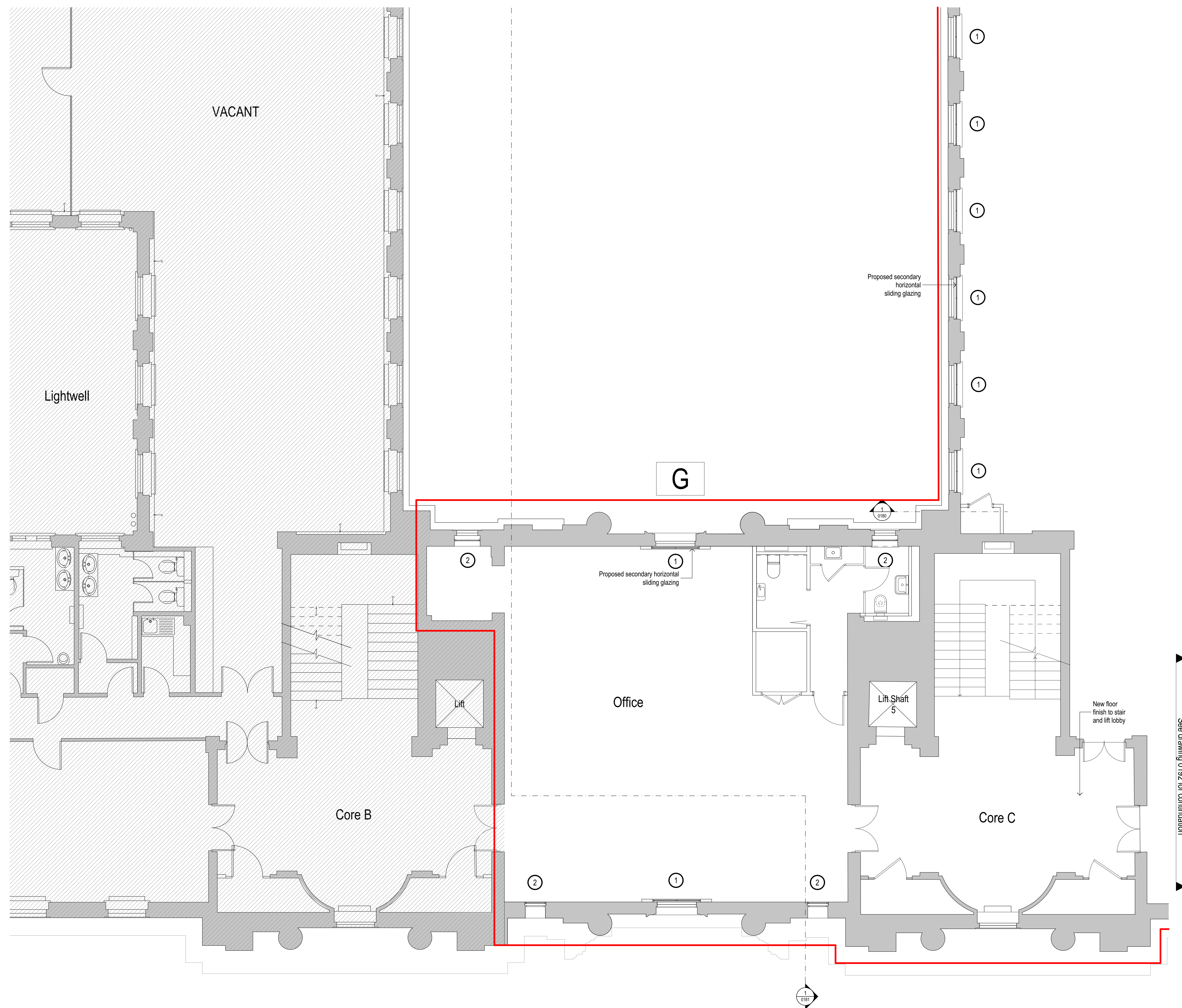


General Arrangement Notes

-  Not in scope
-  Area in scope
-  Area not surveyed
-  Proposed secondary sliding glazing, retained timber sill boards
-  Proposed secondary side hung glazing, retained timber sill boards
-  Proposed insulated panel behind existing frosted glass window with mechanical ventilation grill

Note:
 1. Primary window to be made good internally. Solar film applied to internal face.
 2. Where 's' denotes new timber sill board to match retained timber sill



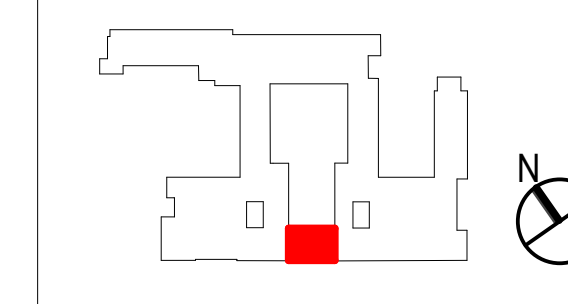
0 1 2 5m

Rev	Date	Dwn	Chk	Description
P01	10/10/2023	PP	LM	For Planning
P02	10/04/2024	PP	LM	For Planning Layout Update

Rev	Date	Dwn	Chk	Description

Rev	Date	Dwn	Chk	Description

KEY PLAN / NORTH SYMBOL



JRA
 John Robertson Architects
 111 Southwark Street,
 London, SE1 1UF
 02076335100
 www.jra.co.uk
 enquiries@jra.co.uk

Project
Tavistock House WS2
 London

Client
British Medical Association
 BMA House, Tavistock Square,
 London, WC1H 9JP
 0200 123 1233
 @bma@bma.org.uk

Drawing Title
Block G - Proposed Third Floor Plan

Scale 1:50 @ A0 Internal Project No. 1998

Dwg No. **1998-JRA-02-03-DR-A-0193**

Suitability FOR INFORMATION S2

Revision FOR PLANNING **P02**