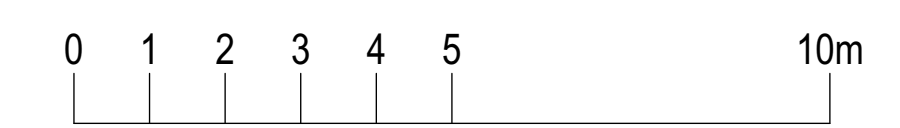


- General Arrangement Notes**
- Not in scope
 - Area in scope
 - Area not surveyed



This document and its design content is © John Robertson Architects Ltd. It shall be used in conjunction with all other associated project information including models, specifications, schedules and related consultants documents. Do not scale from documents. All dimensions to be checked on site. Immediately report any discrepancies, errors or omissions on this document to the Originator. If in doubt ASK.

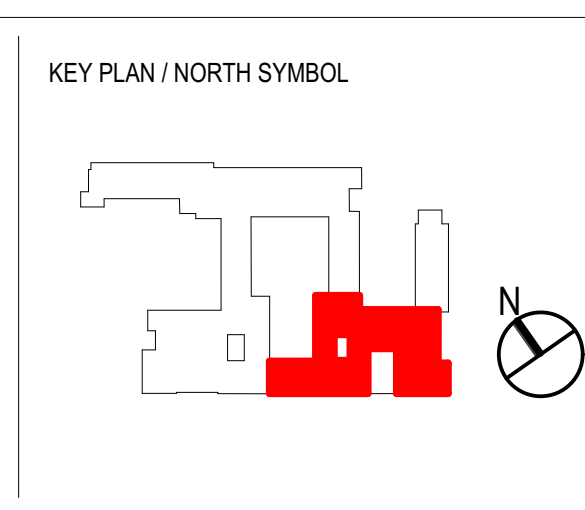
Rev	Date	Dwn	Chk	Description
P01	02/02/2023	JRB	JRB	For Information
P02	24/07/2023	PP	LM	For Planning
P03	01/08/2023	PP	LM	For Planning
P04	18/10/2023	PP	LM	For Planning
P05	10/04/2024	PP	LM	For Planning

Detail markers added
Layout Update

Rev	Date	Dwn	Chk	Description

Rev	Date	Dwn	Chk	Description

Rev	Date	Dwn	Chk	Description



JRA
John Robertson Architects
111 Southpark Street,
London, SE1 1UF
02076335100
www.jra.co.uk
enquiries@jra.co.uk

Project
Tavistock House WS2
London

Client
British Medical Association

BMA House, Tavistock Square,
London, WC1H 9JP
0200 123 1233
bsa@bma.org.uk

Drawing Title
Block F & G - Proposed Third Floor Plan

Scale 1:100 @ A0 Internal Project No. 1998

Dwg No. **1998-JRA-02-03-DR-A-0163**

Suitability FOR INFORMATION S2

Revision FOR PLANNING **P05**

Source File: BMA\04 - STS\BMA03 - BMA\04 - BMA House for Architects\21/10/2019 BMA House\198-JRA-02-02-M2A-001_BMA House Team Model_WORKSTREAM2