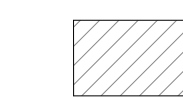
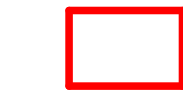



General Arrangement Notes

-  Not in scope
-  Area in scope
-  Area not surveyed

Second Floor Roof

F
Offices

Lightwell

Lightwell

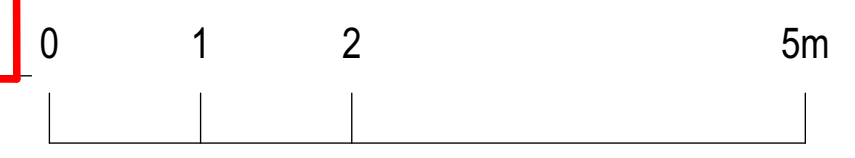
Lift Shaft 3

Lift Shaft 4

Core D

Core C

Second Floor Terrace

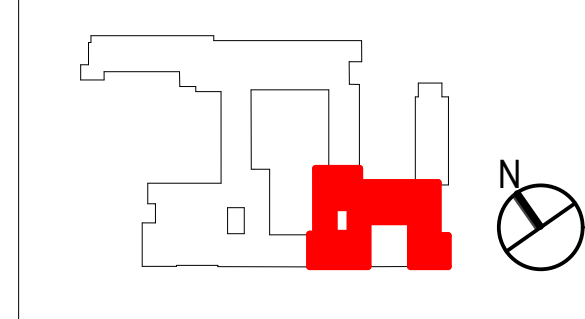


Rev	Date	Dwn	Chk	Description
001	18/10/2023	OS	LM	For Planning

Rev	Date	Dwn	Chk	Description

Rev	Date	Dwn	Chk	Description

KEY PLAN / NORTH SYMBOL



JRA
John Robertson Architects

111 Southwark Street,
London, SE1 1UF
02076335100
www.jra.co.uk
enquiries@jra.co.uk

Project
Tavistock House
London

Client
British Medical Association
BMA House, Tavistock Square London
WC1H 9EP
0200 123 1233
bma@bma.org.uk

Drawing Title
Block F - Existing Third Floor Plan

Scale 1:50 @ A0 Internal Project No. 1998
Dwg No. **1998-JRA-02-03-DR-A-0102**
Suitability FOR INFORMATION S2
Revision FOR PLANNING **P01**

This document and its design content is © John Robertson Architects Ltd. It shall be used in conjunction with all other associated project information including models, specifications, schedules and related consultants documents. Do not scale from documents. All dimensions to be checked on site. Immediately report any discrepancies, errors or omissions on this document to the Originator. If in doubt ASK.

Source File: BMAHouse_17582623 - BMAHouse.dwg for Archcad 23/10/2023 BMA House/198-JRA-02-03-DR-A-0102 BMA House Team Model_WORKSTREAM2