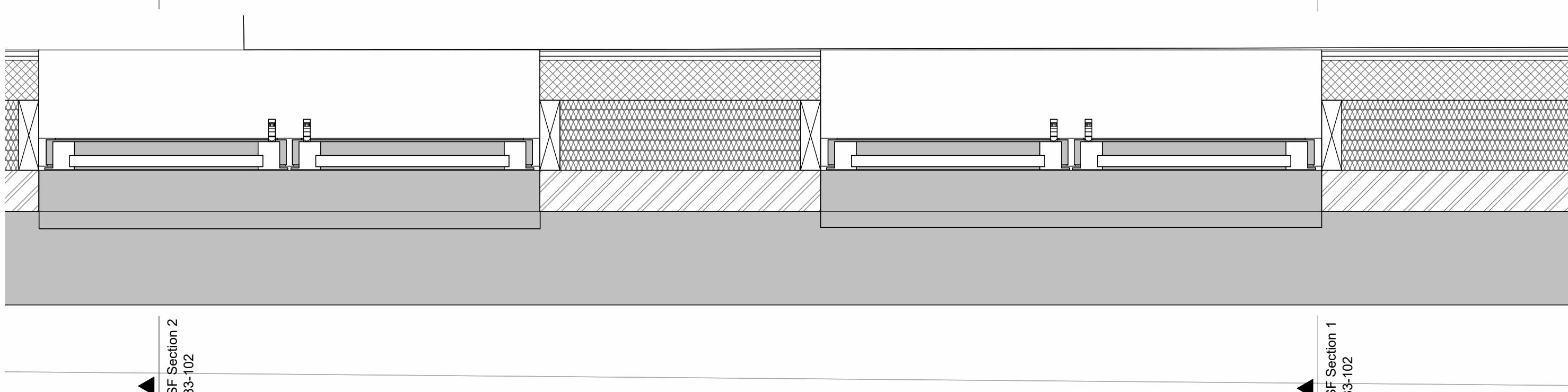
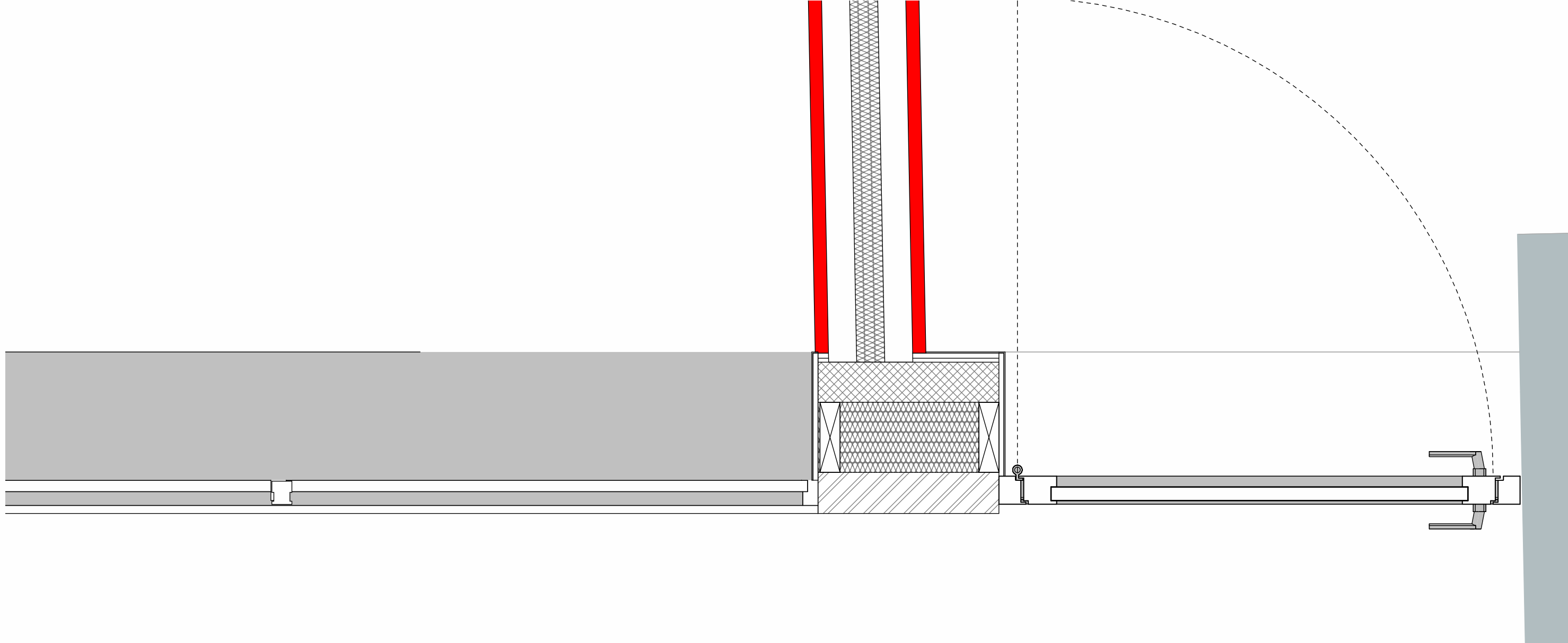




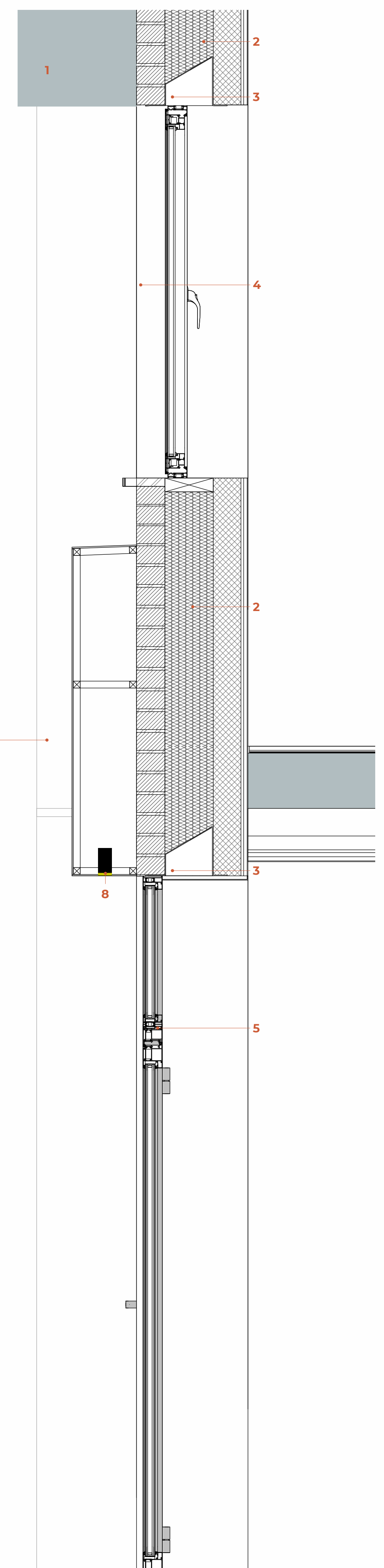
Shopfront Elevation -
Scale 1:25



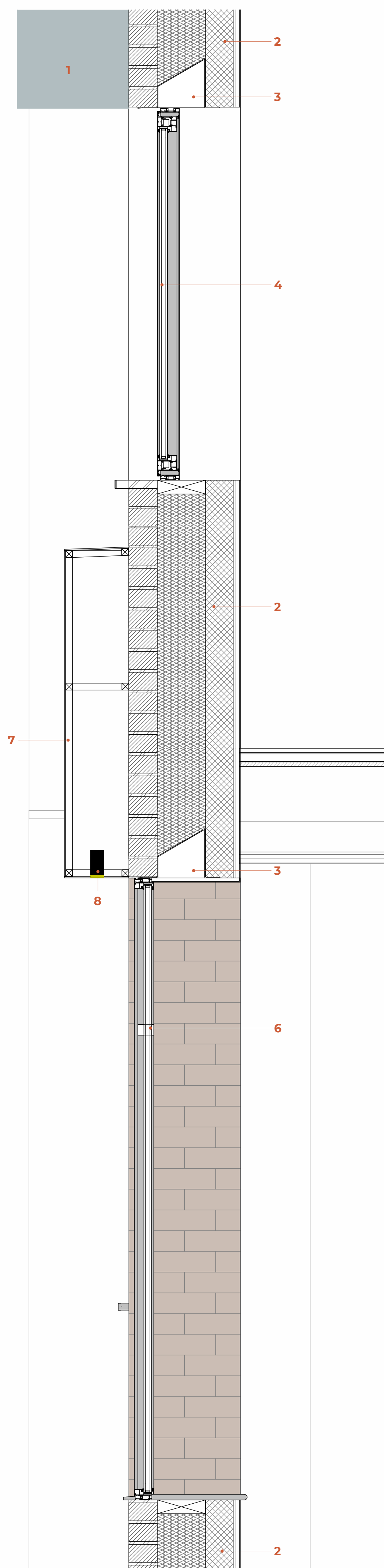
Shopfront - First Floor Detail
Scale 1:10



Shopfront - Ground Floor Entrance Detail
Scale 1:10



Shopfront - Section 1
Scale 1:10



Shopfront - Section 2
Scale 1:10

- WINDOW & DOOR SCHEDULE**
- ED 01 - GLASS ENTRANCE DOOR**
Cortizo Millenium Plus 70
STRUCTURAL OPENING: 1300 x 2550 mm
DOOR SIZE: 1165 x 1965 mm
FIRE RESISTANCE: NO
OPENING SYSTEM: HINGED DOOR
FRAME MATERIAL: ALUMINIUM
DOOR PANEL MATERIAL: DOUBLE GLAZED
FINISH: TBD
HANDLE: STAINLESS-STEEL
LOCKING SYSTEM: SAFETY LOCK
SELF-CLOSING DEVICE
SMOKE SEALS
- QUANTITY: 02
- W01 - 6 FIXED PANELS WINDOW**
Cortizo Casement TB - Slim Smash
QUANTITY: 01
SIZE: 4950 x 2250 mm
MATERIAL: ALUMINIUM
FINISH: COATED GREY
GLAZING: DOUBLE GLAZED
U-Value to be achieved: 1.4 W/(m²K)
- W08 - 2XSIDE HUNG WINDOW**
Cortizo Casement TB - Slim Smash
QUANTITY: 04
SIZE: 1250 x 1350 mm
MATERIAL: ALUMINIUM
FINISH: COATED GREY
GLAZING: DOUBLE GLAZED
U-Value to be achieved: 1.4 W/(m²K)

- LEGEND**
- Existing Concrete frame surround to be cleaned and repainted
 - Proposed Cavity Wall - Refer to Wall Build-ups
 - Catnic Steel Lintel - Refer to SE Specifications
 - Double glazed aluminium Window
 - Double glazed aluminium Door
 - Double glazed fixed aluminium Window
 - Aluminium signage area to frontage finished coated grey
 - Hidden Spot lights

Rev No.	Date	Description
1		REV 01

Notes:
Any inaccuracies or errors to be reported to the architect/surveyor immediately and prior to any work commencing. All dimensions to be verified on site. All work to comply with British Standards Code of practice. All external surfaces and materials to match existing. This drawing and all information provided within it is the copyright of UPP Consultants Ltd. and reproduction without prior consent is strictly forbidden.

Dwg No
197KT-A-33-102

Drawing
Shopfront Details

Drawn
DR

Checked
RZ

Scale
As indicated @ A1

Issue Date
30.04.2024

Project Address
197 Kentish Town Road London
NW5 2JU

Client
Commercial & Residential Real Estate Advisors

Status
Technical