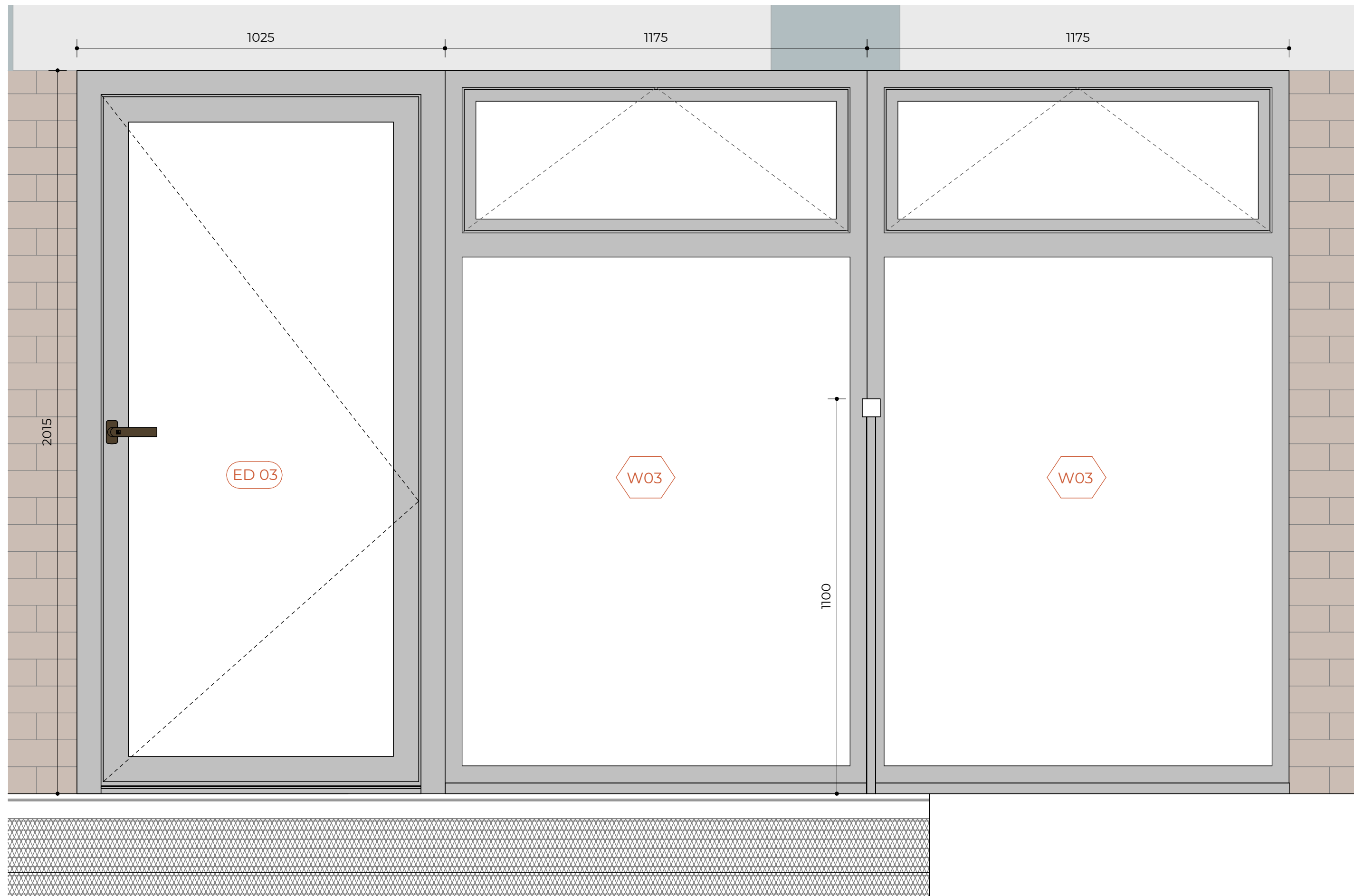
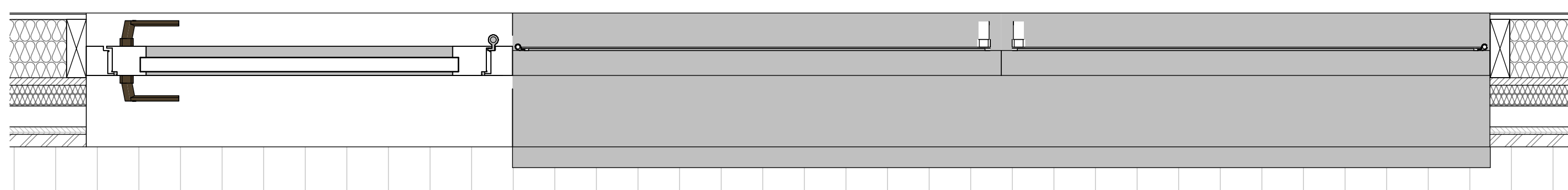


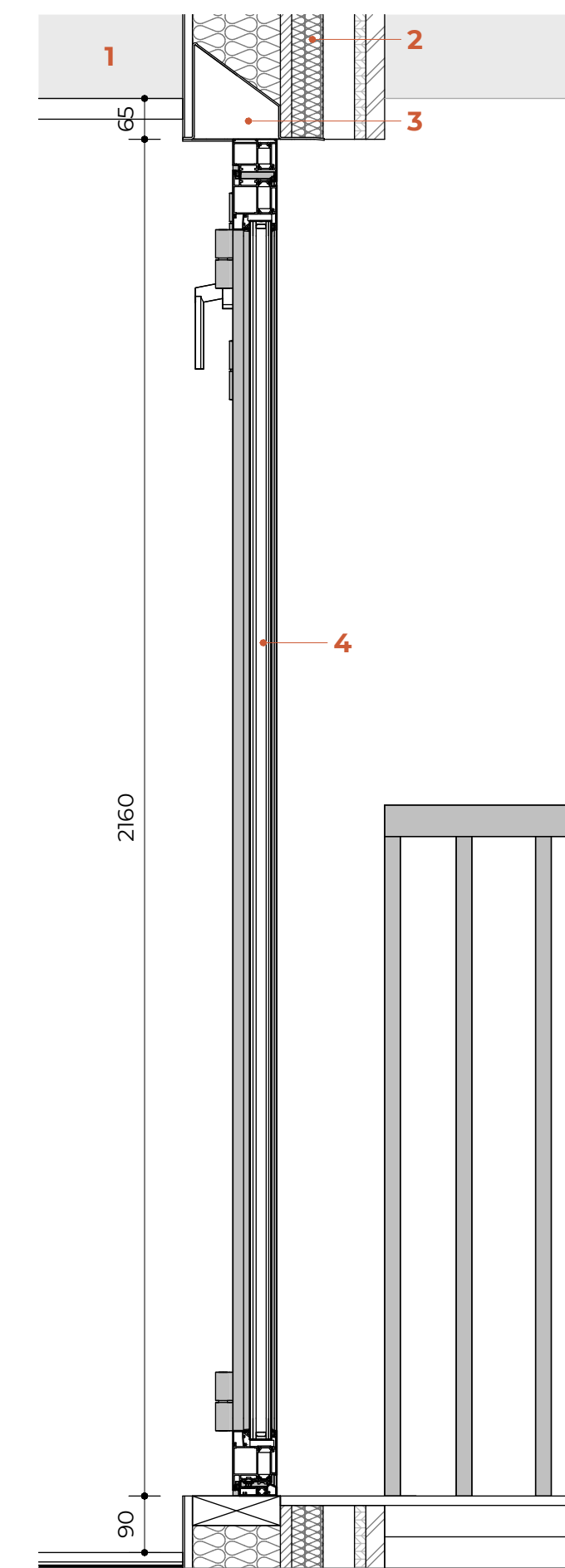
ED02+W02 - Front Elevation Second Floor



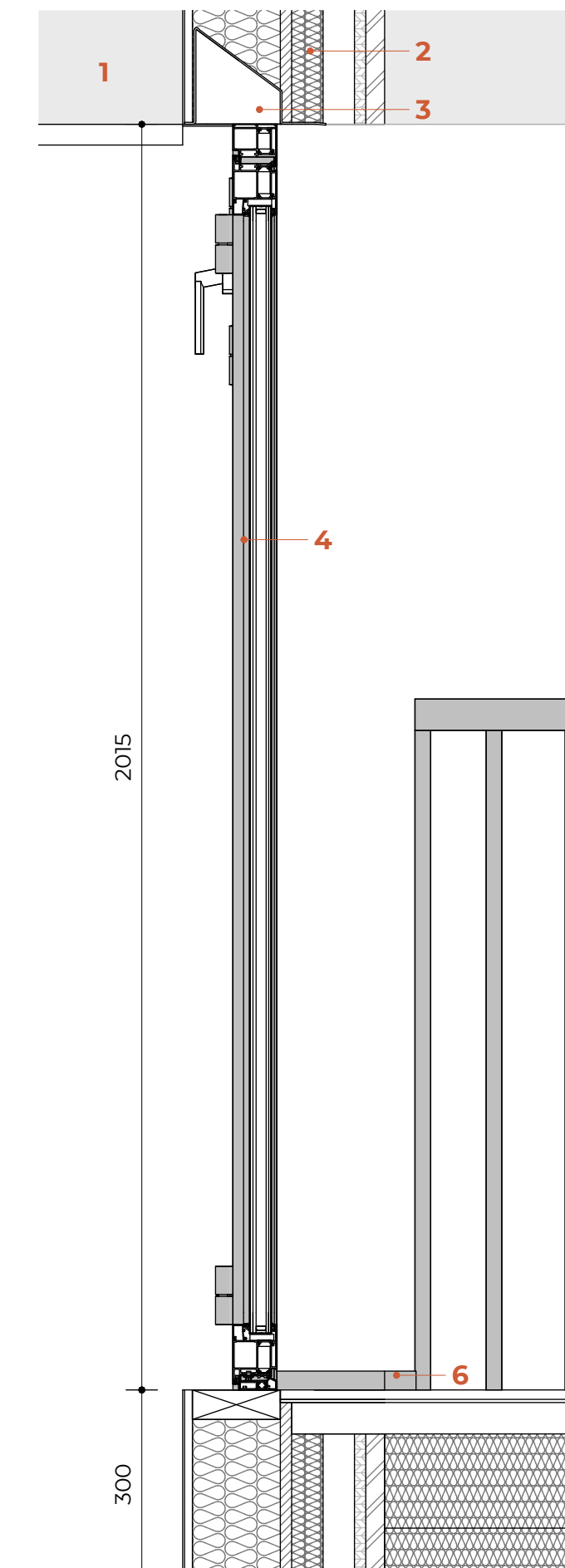
ED03+W03 - Front Elevation First Floor



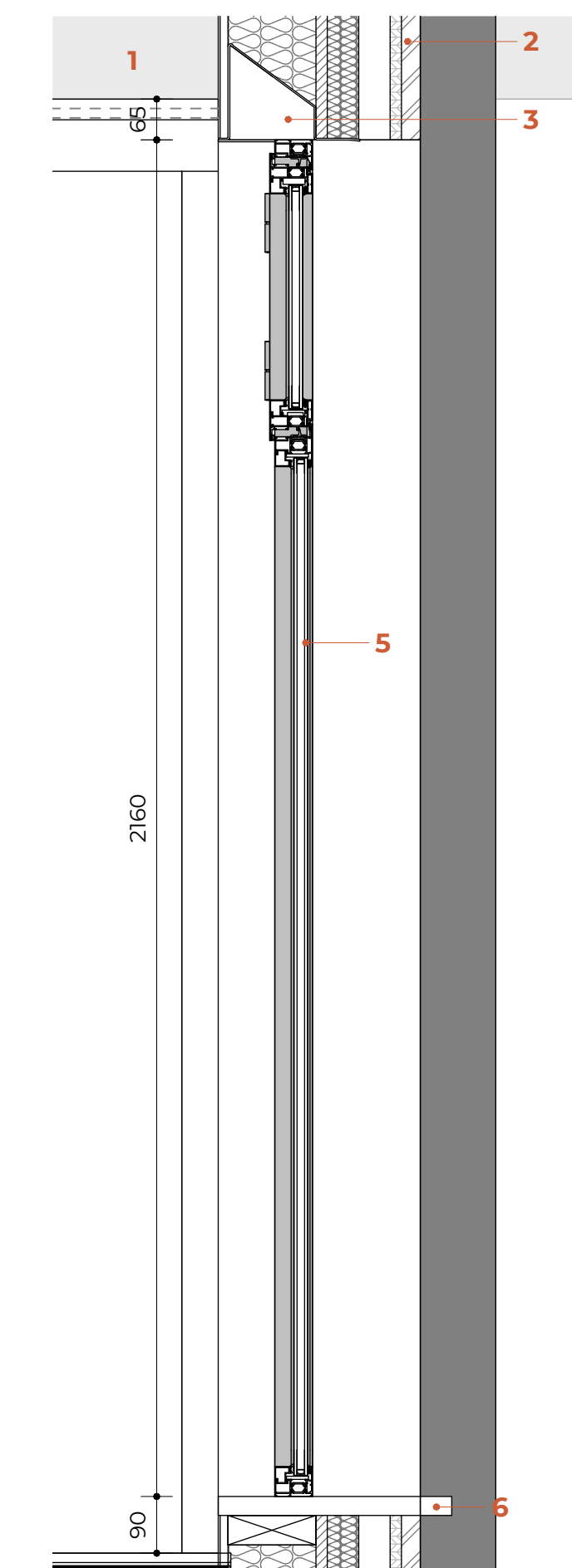
ED02/03+W02/03 - Floor Plan



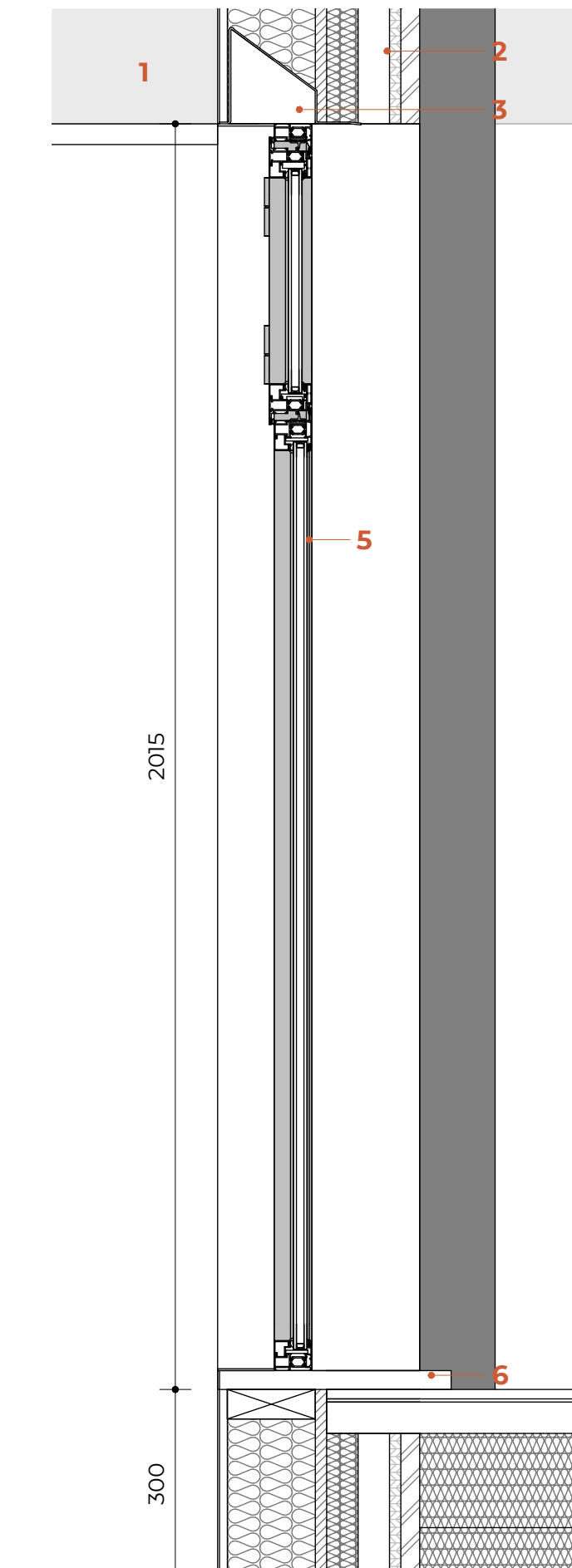
ED02 - Section Second Floor



ED03 - Section First Floor



W02 - Section Second Floor



W03 - Section First Floor

**LEGEND**

- 1. Existing Concrete Beams to be retained
- 2. Proposed Timber Frame External Wall - Refer to Wall Build-ups
- 3. Catnic Steel Lintel - Refer to SE Specifications
- 4. Double glazed aluminium Door
- 5. Double glazed aluminium Window
- 6. Aluminium Window Sill

**WINDOW & DOOR SCHEDULE**

**ED 02 - HINGED AMENITY DOOR**

Cortizo Millenium Plus 70  
 STRUCTURAL OPENING: 1025 x 2160 mm  
 DOOR SIZE: 900 x 2095 mm  
 FIRE RESISTANCE: NO  
 OPENING SYSTEM: HINGED DOOR  
 FRAME MATERIAL: ALUMINIUM  
 DOOR PANEL MATERIAL: DOUBLE GLAZED  
 FINISH: TBD  
 HANDLE: STAINLESS-STEEL  
 LOCKING SYSTEM: SAFETY LOCK  
 SELF-CLOSING DEVICE  
 SMOKE SEALS

QUANTITY: 02

**ED 03 - HINGED AMENITY DOOR**

Cortizo Millenium Plus 70  
 STRUCTURAL OPENING: 1025 x 2160 mm  
 DOOR SIZE: 900 x 1950 mm  
 FIRE RESISTANCE: NO  
 OPENING SYSTEM: HINGED DOOR  
 FRAME MATERIAL: ALUMINIUM  
 DOOR PANEL MATERIAL: DOUBLE GLAZED  
 FINISH: TBD  
 HANDLE: STAINLESS-STEEL  
 LOCKING SYSTEM: SAFETY LOCK  
 SELF-CLOSING DEVICE  
 SMOKE SEALS

QUANTITY: 01

**W02 - BOTTOM FIXED PANEL & TOP HUNG PANEL WINDOW**

Cortizo Casement TB- Slim Smash  
 QUANTITY: 04  
 SIZE: 1175 x 2160 mm  
 MATERIAL: ALUMINIUM  
 FINISH: COATED GREY  
 GLAZING: DOUBLE GLAZED  
 U-Value to be achieved: 1.4 W/(m²K)

**W03 - BOTTOM FIXED PANEL & TOP HUNG PANEL WINDOW**

Cortizo Casement TB- Slim Smash  
 QUANTITY: 02  
 SIZE: 1175 x 2015 mm  
 MATERIAL: ALUMINIUM  
 FINISH: COATED GREY  
 GLAZING: DOUBLE GLAZED  
 U-Value to be achieved: 1.4 W/(m²K)

1 REV 01

Rev No. Date Description

Notes:  
 Any inaccuracies or errors to be reported to the architect/surveyor immediately and prior to any work commencing. All dimensions to be verified on site. All work to comply with British Standards Code of practice. All external surfaces and materials to match existing. This drawing and all information provided within it is the copyright of UPP Consultants Ltd. and reproduction without prior consent is strictly forbidden.

Dwg No  
 197KT-A-33-103

Drawing  
 External Windows/Doors Details 01

Drawn DR Checked RZ

Scale 1:10 @ A1 Issue Date 30.04.2024

0 0.5m

Project Address  
 197 Kentish Town Road London  
 NW5 2JU

Client Commercial & Residential Real Estate Advisors Status Technical

www.wearupp.co.uk  
 info@wearupp.co.uk  
 0208 202 9996  
 Allium, Stables Market, Chalk Farm Road, London, NW1 6AH

