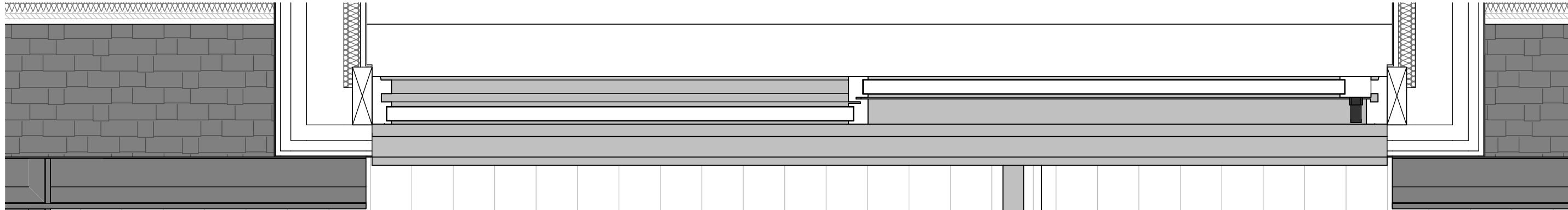


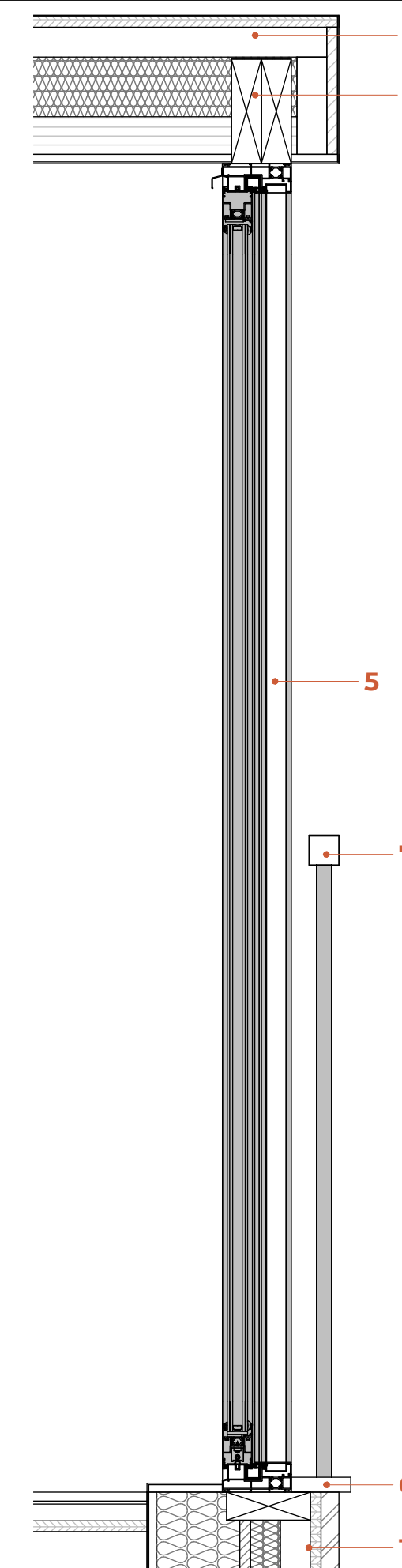
ED02+W02 - Front Elevation Fourth Floor



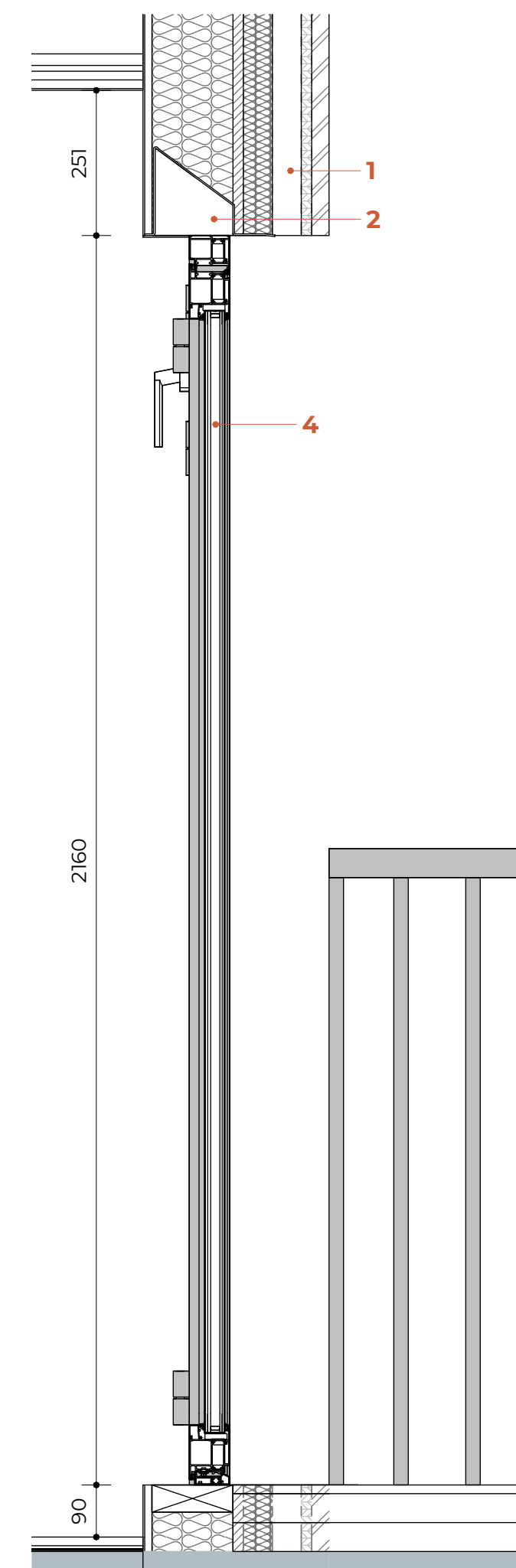
W04 - Floor Plan



ED02+W02 - Front Elevation Third Floor



W04 - Section Fourth Floor



ED02 - Section ThirdFloor

**LEGEND**

1. Proposed Timber Frame External Wall - Refer to Wall Build-ups
2. Castic Steel Lintel - Refer to SE Specifications
3. Timber Lintel - Refer to SE Specifications
4. Double glazed aluminium Door
5. Double glazed aluminium Window
6. Aluminium Window Sill
7. Juliet Balcony - Coated grey finish
8. Proposed Dormer Roof - Refer to Roof Build-ups

**WINDOW & DOOR SCHEDULE**

**ED 02 - HINGED AMENITY DOOR**  
 Cortizo Millenium Plus 70  
 STRUCTURAL OPENING: 1025 x 2160 mm  
 DOOR SIZE: 900 x 2095 mm  
 FIRE RESISTANCE: NO  
 OPENING SYSTEM: HINGED DOOR  
 FRAME MATERIAL: ALUMINIUM  
 DOOR PANEL MATERIAL: DOUBLE GLAZED  
 FINISH: TBD  
 HANDLE: STAINLESS-STEEL  
 LOCKING SYSTEM: SAFETY LOCK  
 SELF-CLOSING DEVICE  
 SMOKE SEALS

QUANTITY: 02

**W02 - BOTTOM FIXED PANEL & TOP HUNG PANEL WINDOW**  
 Cortizo Casement TB - Slim Smash  
 QUANTITY: 04  
 SIZE: 1175 x 2160 mm  
 MATERIAL: ALUMINIUM  
 FINISH: COATED GREY  
 GLAZING: DOUBLE GLAZED  
 U-Value to be achieved: 1.4 W/(m²K)

**W04- 2 SLIDING PANELS WINDOW**  
 Cortizo 4700 Sliding  
 QUANTITY: 01  
 SIZE: 2450x 2250 mm  
 MATERIAL: ALUMINIUM  
 FINISH: COATED GREY  
 GLAZING: DOUBLE GLAZED  
 U-Value to be achieved: 1.4 W/(m²K)

1 REV 01

Rev No.	Date	Description
1		

Notes:  
 Any inaccuracies or errors to be reported to the architect/surveyor immediately and prior to any work commencing. All dimensions to be verified on site. All work to comply with British Standards Code of practice. All external surfaces and materials to match existing. This drawing and all information provided within it is the copyright of UPP Consultants Ltd. and reproduction without prior consent is strictly forbidden.

Dwg No  
 197KT-A-33-104

Drawing  
 External Windows/Doors Details 02

Drawn  
 DR

Checked  
 RZ

Scale  
 1:10 @ A1

Issue Date  
 30.04.2024

0 0.5m

Project Address  
 197 Kentish Town Road London  
 NW5 2JU

Client  
 Commercial & Residential Real Estate Advisors

Status  
 Technical