

SERVICE GRAPHICS 



By Appointment to
Her Majesty The Queen
Suppliers of Graphics and Signs
Service Graphics
London

JW3

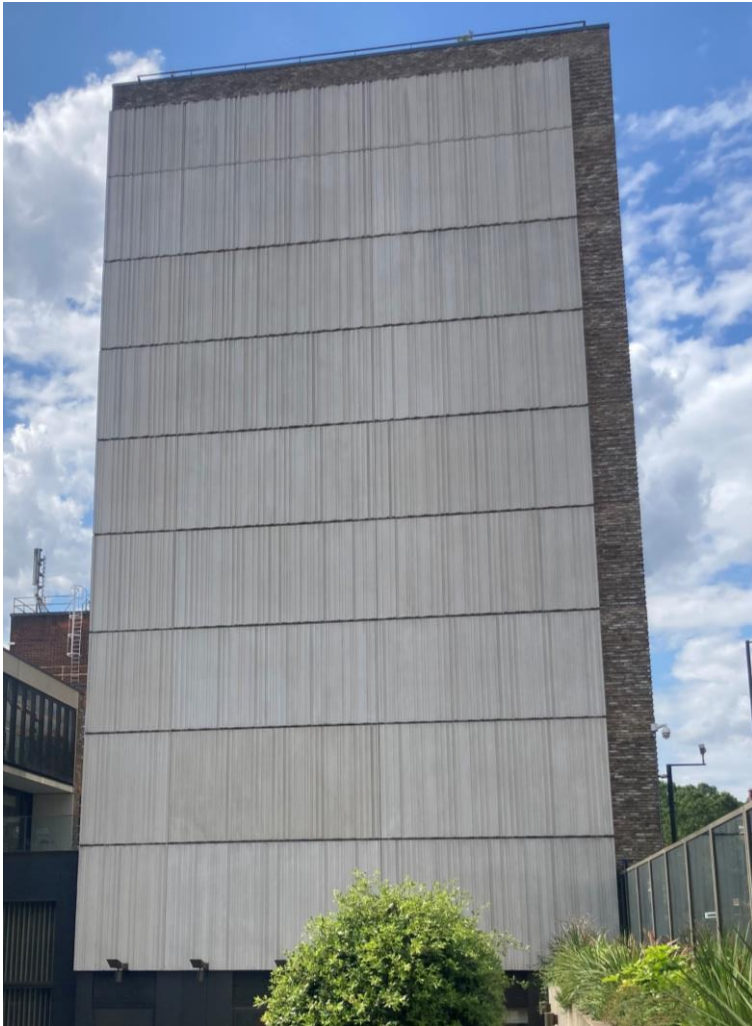
Banner & Proposal

THINK . CREATE . DELIVER



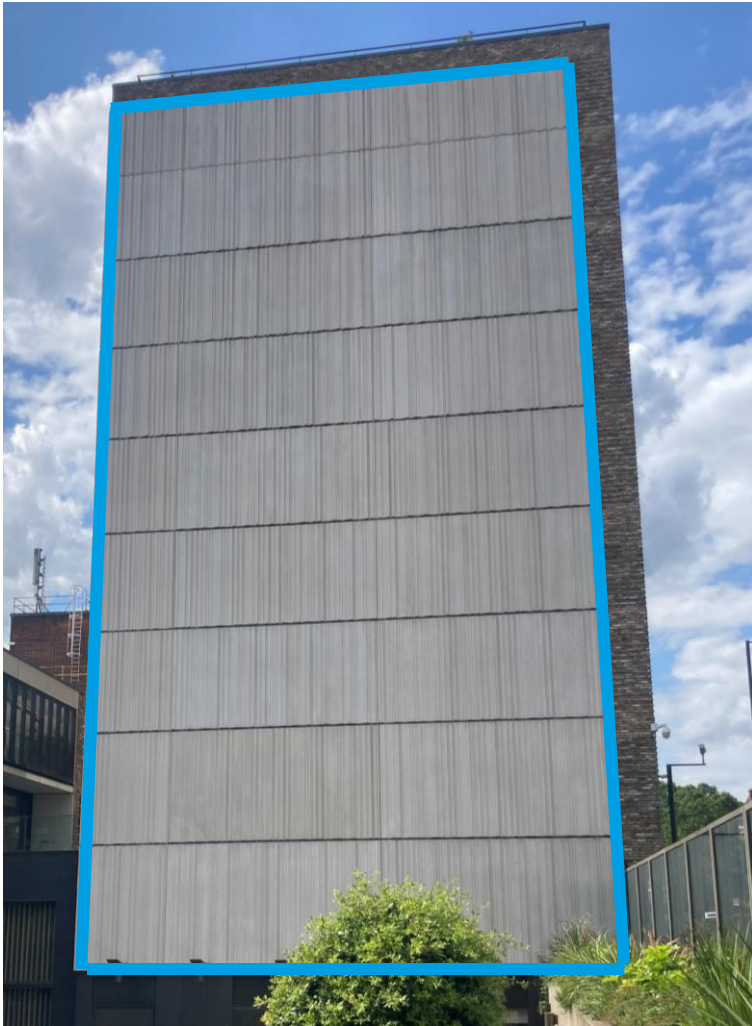
servicegraphics.co.uk/display

LOCATION



JW3, 341-351 Finchley Road, London, NW3 6ET

PROPOSED SIZE & LOCATION



Location

JW3 341-351 Finchley Road, London, NW3 6ET

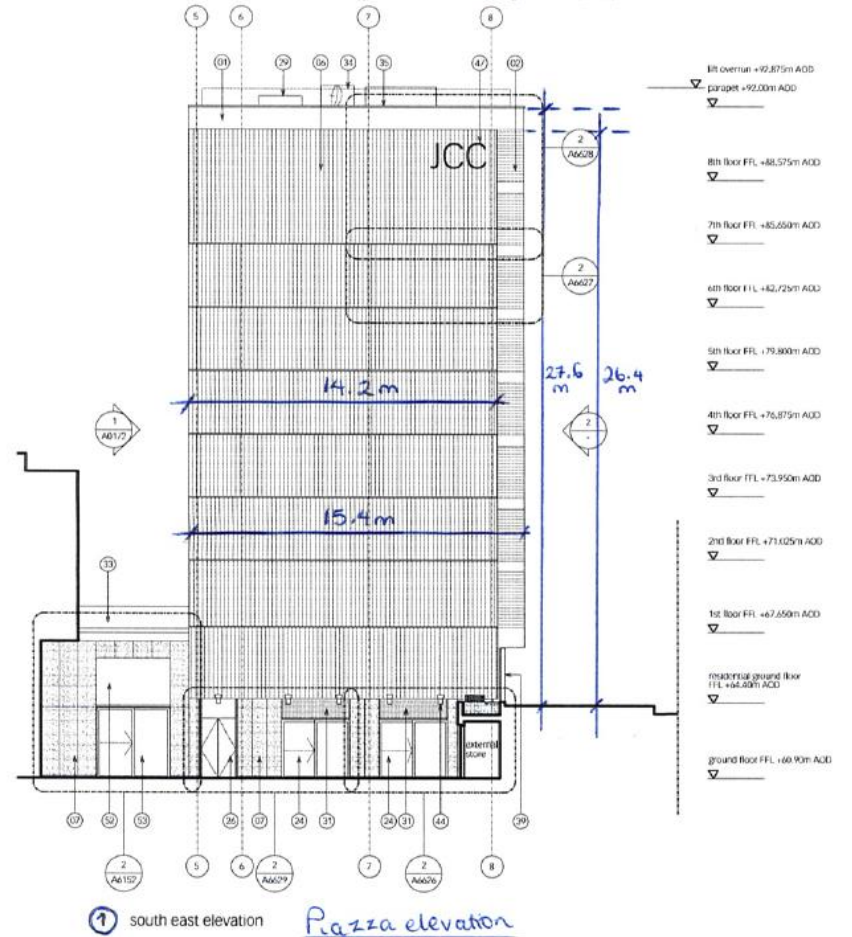
Dimensions (mm) Indicated in blue

26,400(h) x 14,200(w) x 150(d)

FAÇADE DIMENTIONS

Key

1. brick p 10/120
2. Heded brick detail p 10/120
3. expressed movement joint p 30/6/16
4. cast-in-situ precast concrete balcony to Structural-engineers detail
5. precast concrete panel H42/110
6. precast concrete cladding with vertical/heded face H42/110
7. glass rainscreen cladding H42/110
8. fixed perforated brass panel H42/110 with anodised aluminium sub-frame (21/1/10)
9. slung perforated brass panel H42/110 with anodised aluminium sub-frame (21/1/10)
10. ht and ms brickwork p 10/120 over curtain walling (11/1/10) with airward opening windows (2/0/2) and glass type 2 (4/0/1/10)
11. full height glass resistant curtain walling H42/110 behind perforated brass screen H42/110 with glass type 1 (4/0/1/10)
12. full height glass resistant curtain walling H42/110 with glass type 1 (4/0/1/10)
13. full height glass resistant curtain walling H42/110 with glass type 5 (4/0/1/10)
14. full height glass resistant curtain walling H42/110 with white ceramic tile finish & central vision sika to glazing (4/0/2/10) with glass type 1
15. aluminium framed window (4/0/2/10) with fixed glazing and translucent white interlayer (4/0/2/10) and glass type 1 (4/0/1/10)
16. aluminium framed window (4/0/2/10) with fixed and inward opening casement and glass type 4 (4/0/1/10)
17. aluminium framed window (4/0/2/10) with fixed and inward opening casement translucent white interlayer (4/0/2/10) and glass type 2 (4/0/1/10)
18. glass resistant aluminium framed window (4/0/2/10) with inward opening casement and glass type 1 (4/0/1/10)
19. glass resistant aluminium framed window (4/0/2/10) with fixed glazing and glass type 4 (4/0/1/10)
20. aluminium framed sliding/sliding glazed door (4/0/2/10) with glass type 2 (4/0/1/10)
21. aluminium framed glazed door (4/0/2/10) with powered operation & glass type 1 (4/0/1/10)
22. multi-fused door (4/0/2/10) with PVC finish (M40/145)
23. steel frame door (4/0/2/10) with PVC finish (M40/145)
24. glass resistant aluminium glazed automated escape door (4/0/2/10) and fixed side panels with glass type 1 (4/0/1/10)
25. glass resistant aluminium glazed automated escape door (4/0/2/10) with glass type 1 (4/0/1/10)
26. brass faced insulation aluminium escape door (4/0/2/10)
27. aluminium framed glazed door (4/0/2/10) with glass type 4 (4/0/1/10)
28. glazed double door with aluminium head and bottom rails and powered operation (4/0/2/10)
29. roof access hatch (1/0/4/50)
30. brass faced opening vent within glass resistant curtain walling (1/1/1/10)
31. ventilation grill with anodised aluminium finish (4/0/4/20)
32. ventilation grill with anodised aluminium finish integrated into glazing system
33. cast-in-situ glass balustrade (4/0/2/10)



BANNER & FRAME

Interclamp Frame & Banner (non illuminated)

Files: Supplied via our FTP

Artwork: Preflight files

Frame Size: 26,400 x 14,200mm

Printing: Single sided on Frontlit PVC (Semi Coated) 5m x 50m (requires 2 joins)

Trim: Cut to Size.

Additional: Welding and Finishing of PVC Banner to fit frame size

DESCRIPTION OF WORKS

The scope of the works is the Installation of a, key-clamp system, and banner 26,400 x 14,200mm

Frame: Fixings- base plates fixed with M12 resin bolts (**fig 1**), steel tubing and key clamp couplers (**fig 2**):

Comprises of scaffold tube & closed couplings, Frame extends 300mm out from the building & must be braced every 2m.

A wire rope will be installed around the perimeter of the frame through the base plates as shown in (**fig 3**) Banner will be fitted to wire rope using 10mm shock cord bungee and carabines.

Cutting of framework will be onsite using a Cordless Reciprocating Saw fittings will be fixed using battery operated drills attached to lanyards.

Bolt size	Bolt diameter* mm	Pitch mm
M6	6.0	1.0
M8	8.0	1.25
		1.0
M10	10.0	1.5
		1.25
M12	12.0	1.75
		1.25
M14	14.0	1.5



fig 1



fig 3

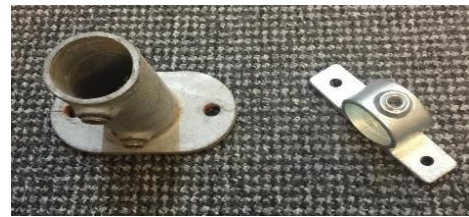


fig 2



BANNER & FRAME (highlighted in blue) – Front Elevation

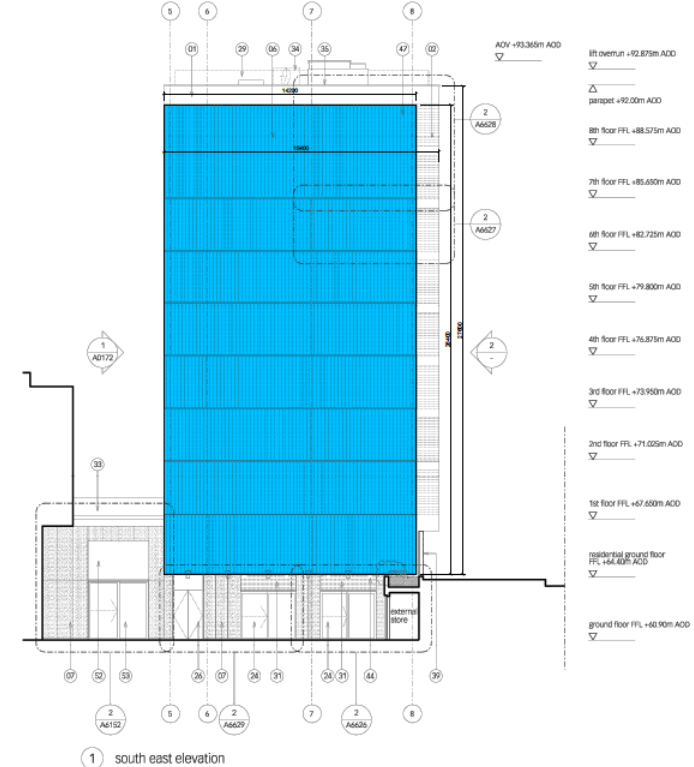
key

1. brick (F1012)
2. ribbed brick detail (F1012)
3. expressed movement joint (F3016)
4. cantilevered precast concrete balcony to structural engineers detail
5. precast concrete panel (H4211)
6. precast concrete cladding with vertically ribbed face (H4211)
7. brass rainscreen cladding (H4211)
8. fixed perforated brass panel (H92118) with anodised aluminium sub-frame (D11111)
9. sliding perforated brass panel (H92118) with anodised aluminium sub-frame (D11111)
10. hit and miss brickwork (F1012) fixed curtain walling (H11113) with fixed opening windows (L20116) and glass type 7 (L40113)
11. full height blast resistant curtain walling (H11113) behind perforated brass screen (H92118) with glass type 1 (L40113)
12. full height blast resistant curtain walling (H11113) with glass type 1 (L40113)
13. full height blast resistant curtain walling (H11113) with glass type 5 (L40113)
14. full height blast resistant curtain walling (H11113) with white ceramic frit finish and central vision strip to glazing (L40000) with glass type 1 (L40113)
15. aluminium framed window (L10213) with fixed glazing and translucent white interlayer (L40223) and glass type 1 (L40113)
16. aluminium framed window (L10213) with fixed and inward opening casement and glass type 4 (L40113)

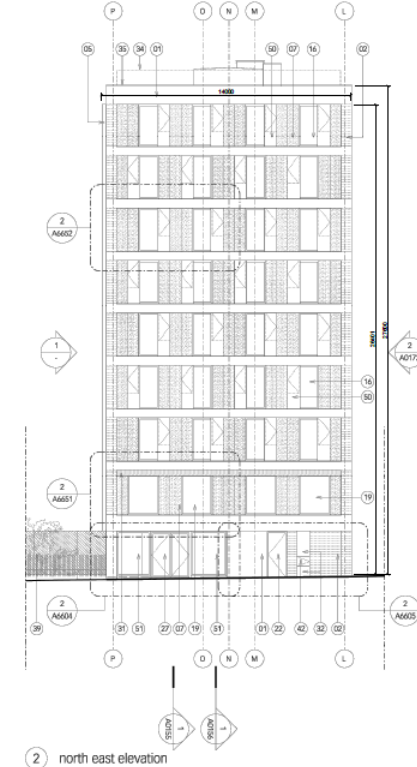
17. aluminium framed window (L10203) with fixed and inward opening casement translucent white interlayer (L40223) and glass type 2 (L40113)
18. blast resistant aluminium framed window (L10225) with inward opening casement and glass type 1 (L40113)
19. blast resistant aluminium framed window (L10225) with fixed glazing and glass type 4 (L40113)
20. aluminium framed sliding/tracking glazed door (L10203) with glass type 2 (L40113)
21. aluminium framed glazed door (L20113) with powered operation & glass type 1 (L40113)
22. metal blast door (L20203) with PFC finish (M40143)
23. steel louvre door (L20113) with PFC finish (M40143)
24. blast resistant aluminium glazed lift and slide door (L20103) and fixed side panels with glass type 1 (L40113)
25. blast resistant aluminium glazed automated escape door (L20103) with glass type 1 (L40113)
26. blast resistant aluminium escape door (L20114)
27. aluminium framed glazed door (L20112) with glass type 4 (L40113)
28. glazed double door with aluminium head and bottom rails and powered operation (L20103)
29. roof access hatch (L10143)
30. brass faced opening vent within blast resistant curtain walling (H11113)
31. ventilation grill with anodised aluminium finish (L10143)
32. ventilation grill with anodised aluminium finish integrated into glazing system
33. cantilevered glass balustrade (L30113)

34. steel balustrade (L30203) with painted finish (M40113)
35. zinc coppe to parapet (H4113)
36. ornished
37. metal gate for pedestrian entrance
38. metal gate for vehicular entrance
39. perimeter screen
40. steel rebar for Alwayley Garden boundary wall to SE's details
41. integrated bat boxes (F3018)
42. dry rise inlet
43. bridge
44. external lighting to lighting designers specification
45. fixed security camera to M&E engineers specification
46. natural ventilation turbines with anodised aluminium finish
47. JCC signage
48. back fit (L40200) to glazing
49. boiler flue
50. perforated brass screen (H92118) in front of window with clear height opening casement (L10216)
51. full height blast resistant curtain walling (H11113) with glass type 4 (L40113)
52. full height blast resistant curtain walling (H11113) with glass type 3 (L40113)
53. blast resistant aluminium glazed lift and slide door (L20103) and fixed side panels with glass type 3 (L40113)

rev. date by. reason
/ 04.08.13 AY issued for record



1 south east elevation



2 north east elevation

notes

This drawing is the property of Lifschutz Davidson Sandilands Ltd. No reproduction or reuse of this drawing for any other project without the written permission of Lifschutz Davidson Sandilands Ltd.

key plan



project

A Jewish Community Centre
34th Street, London W8 5ET

client

JCC Ventures Ltd

architect

Lifschutz Davidson Sandilands
34th Street, London W8 5ET
Tel: +44 (0)20 8000 1800
Fax: +44 (0)20 8000 1700
www.lsd.com

drawing title

general arrangement
residential SE & NE elevations

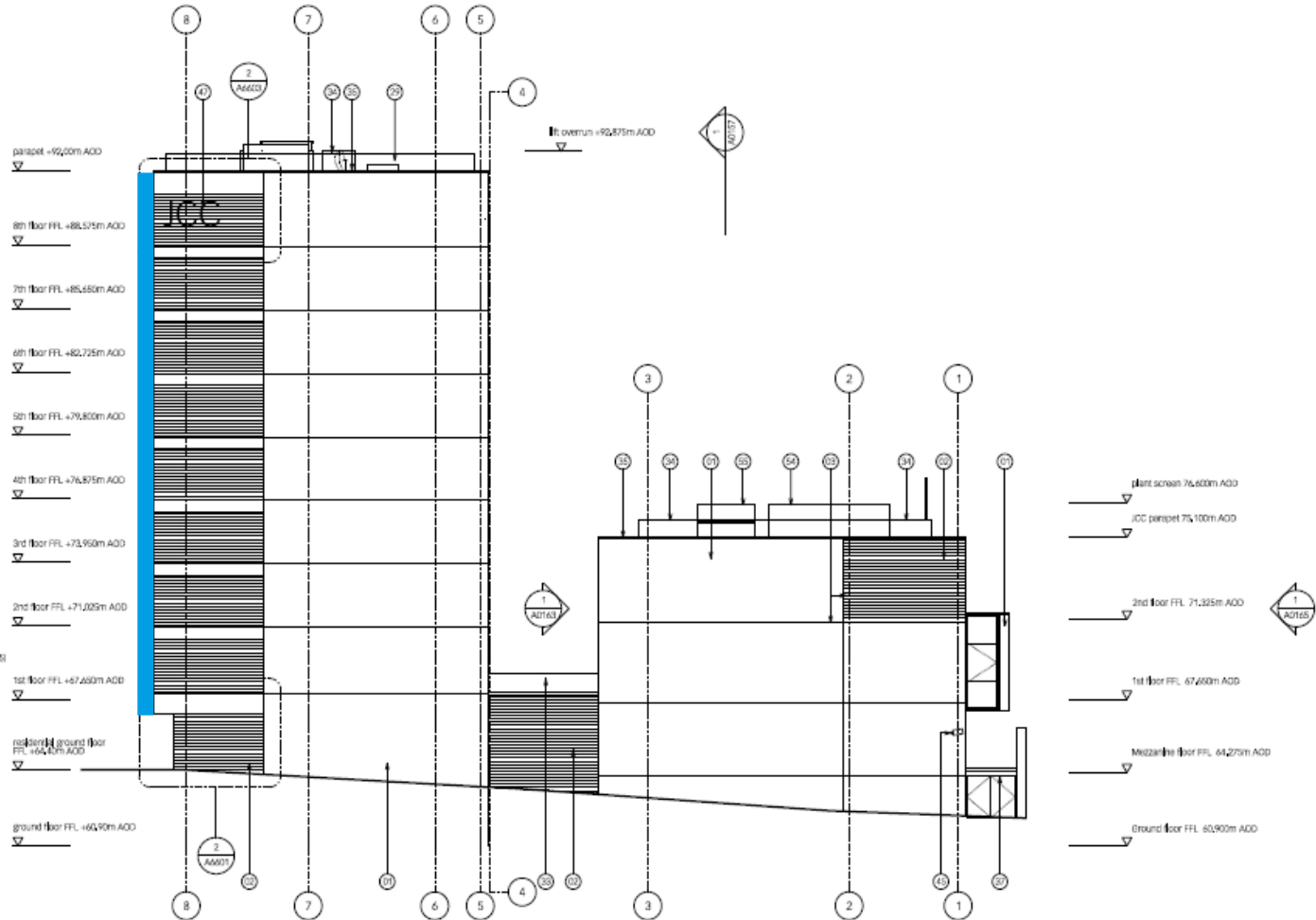
scale at A1 scale at A3 drawn date
1:100 1:200 LU 10.10

job no. drawing rev.
0790 R0171 /

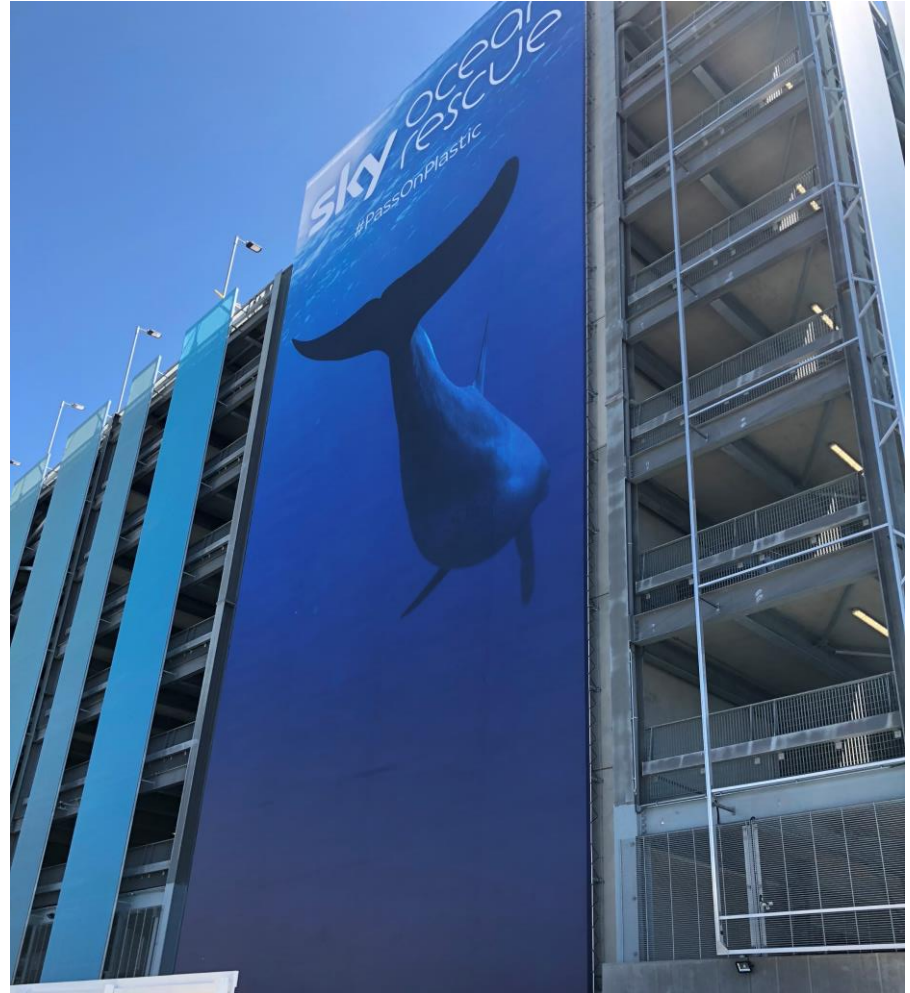
BANNER & FRAME (highlighted in blue) – Side Elevation

key

1. brick #10/120
2. ribbed brick detail #10/120
3. expressed movement joint (F30/S16)
4. cast-in-place concrete balcony to structural engineer's data
5. precast concrete panel (#42/110)
6. precast concrete cladding with vertically ribbed face (#42/110)
7. brass mesh screen cladding (#92/110)
8. fixed perforated brass panel (#92/110) with anodised aluminium sub-frame (21/1410)
9. sliding perforated brass panel (#92/110) with anodised aluminium sub-frame (21/1410)
10. fixed and sliding aluminium (#10/120) over curtain walling (#11/130) with fixed opening windows (20/316) and glass type 2 (4,40/110)
11. full height blast resistant curtain walling (#11/130) behind perforated brass screen (#92/110) with glass type 1 (4,40/110)
12. full height blast resistant curtain walling (#11/130) with glass type 1 (4,40/110)
13. full height blast resistant curtain walling (#11/130) with glass type 5 (4,40/110)
14. full height blast resistant curtain walling (#11/130) with white ceramic frit finish & central aluminium glazing (4,40/200) with glass type 1
15. aluminium framed window (0,10/200) with fixed glazing and translucent white Insulayer (4,40/220) and glass type 1 (4,40/110)
16. aluminium framed window (0,10/215) with fixed and inward opening casement and glass type 1 (4,40/110)
17. aluminium framed window (0,10/220) with fixed and inward opening casement translucent white Insulayer (4,40/220) and glass type 2 (4,40/110)
18. clear resistant aluminium framed window (0,10/220) with inward opening casement and glass type 1 (4,40/110)
19. clear resistant aluminium framed window (0,10/220) with fixed glazing and glass type 4 (4,40/110)
20. aluminium framed sliding folding glazed door (3,30/250) with glass type 2 (4,40/110)
21. aluminium framed glazed door (3,20/310) with powered operation & glass type 1 (4,40/110)
22. metal based door (3,20/420) with PRC finish (#60/140)
23. steel lauvne door (3,20/410) with PRC finish (#60/140)
24. clear resistant aluminium glazed lift and slide door (3,20/300) and fixed slide panels with glass type 1 (4,40/110)
25. clear resistant aluminium glazed automated escape door (3,20/300) with glass type 1 (4,40/110)
26. brass faced insulation aluminium escape door (3,20/314)
27. aluminium framed glazed door (3,20/310) with glass type 4 (4,40/110)
28. glazed double door with aluminium head and bottom rails and powered operation (3,20/300)
29. roof access hatch (3,10/150)
30. brass faced opening vent within blast resistant curtain walling (#11/130)
31. ventilation grill with anodised aluminium finish (3,10/400)
32. ventilation grill with anodised aluminium finish integrated into glazing system
33. cast-in-place glass balustrade (3,30/210)
34. steel balustrade (3,30/250) with polished finish (#60/110)
35. zinc coating to parapet (#14/130)
36. ornited
37. metal gate for pedestrian entrance
38. metal gate for vehicular entrance
39. perimeter screen
40. steel restrainers for Alameda Garden boundary wall to SE's details
41. integrated net boxes (#30/180)
42. dry fiber inlet
43. balcony
44. external landing to lifting designers specification
45. fixed security camera to M&E engineers specification
46. natural ventilation tunnels with anodised aluminium finish
47. ICC storage
48. fixed fire (4,40/200) to glazing
49. roller door
50. perforated brass screen (#92/110) in front of window with part height opening casement (0,10/215)
51. full height blast resistant curtain walling (#11/130) with glass type 4 (4,40/110)
52. full height blast resistant curtain walling (#11/130) with glass type 3 (4,40/110)
53. clear resistant aluminium glazed lift and slide door (3,20/300) and fixed slide panels with glass type 3 (4,40/110)
54. steel plate screen (#92/110)
55. natural ventilation tunnel



EXAMPLES – BANNER & FRAME



GRAPHICS & INSTALLATION TEAM

Project Lead

Suzanne Pitcher

Head of Museums & Experiences

07736 930842

Suzanne.Pitcher@servicegraphics.co.uk

Installation Manager

Charlotte Hanlan

Site Survey and Lead Installer

Warren Howarth

Operations Manager

Stephen Morgan