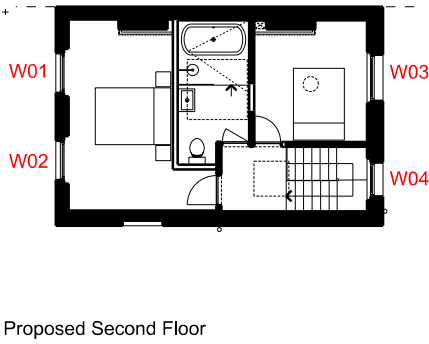
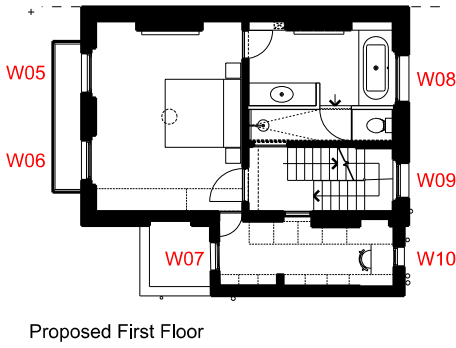
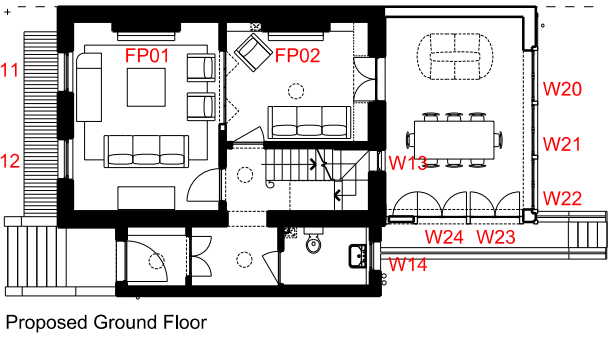
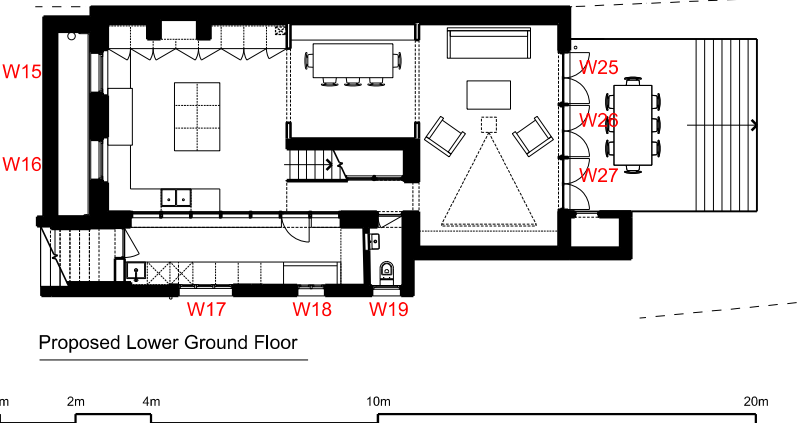


Proposed Window Schedule

No	Floor	Description	Existing or Proposed Location	Window size (mm)		Existing Window	Historic/Modern	Action
				Height	Width			
W01	L2	Bedroom 02	Existing	1525	1065	Painted sash, double glazed	Modern	Draughtseal and Overhaul and Fit 1 New Pair of Sashes in painted pine with Histoglass Mono 9mm laminate. Replace cill
W02	L2	Bedroom 02	Existing	1525	1065	Painted sash, double glazed	Modern	Draughtseal and Overhaul and Fit 1 New Pair of Sashes in painted pine with Histoglass Mono 9mm laminate. Replace cill
W03	L2	Bedroom 03	Existing	1465	1205	Painted sash, double glazed	Modern	Draughtseal and Overhaul and Fit 1 New Pair of Sashes in painted pine with Histoglass Mono 9mm laminate. Replace cill, replace half pulley stile, splice repair to outer jamb
W04	L2	L2 Hallway	Existing	1670	910	Painted sash, double glazed	Modern	Draughtseal and Overhaul and Fit 1 New Pair of Sashes in painted pine with Histoglass Mono 9mm laminate. Replace cill, replace half pulley stiles, splice repairs to outer jamb
W05	L1	Principle Bedroom	Existing	2510	1070	Painted sash, single glazed	Historic frame and glass	Draughtseal and Overhaul. Replace cill
W06	L1	Principle Bedroom	Existing	2510	1070	Painted sash, single glazed	Historic frame and glass	Draughtseal and Overhaul. Replace cill
W07	L1	Principle Dressing (front)	Existing	1057	940	Painted sash, double glazed	Modern	Install a complete new non Doc L Classic sash window in painted pine with Histoglass Mono 9mm laminate.
W08	L1	Principle Ensuite	Existing	1860	1325	Painted sash, double glazed	Modern	Install a complete new Doc L Classic sash window in painted pine with Histoglass Mono 9mm laminate.
W09	L1	L1 Hallway	Existing	1780	980	Painted sash, double glazed	Modern	Install a complete new Doc L Classic sash window in painted pine with Histoglass Mono 9mm laminate.
W10	L1	Principle Dressing (rear)	Existing	1145	605	Painted sash, double glazed	Modern	Install a complete new Doc L Classic sash window in painted pine with Histoglass Mono 9mm laminate.
W11	L0	Front Reception	Existing	1680	1070	Painted sash, single glazed	Historic frame and glass	Draughtseal and Overhaul
W12	L0	Front Reception	Existing	1680	1070	Painted sash, single glazed	Historic frame and glass	Draughtseal and Overhaul
W13	L0	L0 Hallway (internal)	Existing - enlarged	1625	590	Painted casement, double glazed	Modern	New painted fixed toughened glass casement window - internal
W14	L0	Cloakroom	Existing	1300	1070	Painted casement, double glazed	Modern	Install a complete new Doc L Classic sash window in painted pine with Histoglass Mono 9mm laminate.
W15	L-1	Kitchen	Existing	1300	1070	Painted sash, single glazed	Historic frame and glass	Draughtseal and Overhaul
W16	L-1	Kitchen	Existing	1300	1070	Painted sash, single glazed	Historic frame and glass	Draughtseal and Overhaul
W17	L-1	Utility	Existing	600	1445	Painted sash, double glazed	Modern	Install a complete new Doc L Classic sash window in painted pine with Histoglass Mono 9mm laminate.
W18	L-1	Utility	Existing	600	740	Painted sash, double glazed	Modern	Install a complete new Doc L Classic sash window in painted pine with Histoglass Mono 9mm laminate.
W19	L-1	WC	Existing	600	770	Painted sash, double glazed	Modern	Install a complete new Doc L Classic sash window in painted pine with Histoglass Mono 9mm laminate.
W20 - W22	L0	Extension	Proposed	2420	1300	Painted arched head double-glazed window	Modern	Specification tbc.
W23 - W24	L0	Extension	Proposed	2420	1300	Painted arched head double-glazed french doors	Modern	Specification tbc.
W25 - W27	L-1	Extension	Proposed	2420	1300	Painted double-glazed french doors	Modern	Specification tbc.

Notes

Window sizes based on existing survey provided by Client. Window sizes to be checked and confirmed prior to manufacture.



General Notes

Do not scale from this drawing. Drawings are for the purpose of the stage stated at the base of the drawing and therefore not for construction unless specifically stated. All dimensions to be verified on site prior to construction.

For information only unless indicated in status.  
All structure to Structural Engineer's design.  
All services to be Contractor's design.  
All works to be in accordance with current Building Regulation requirements an current construction legislation.  
It is the contractor's responsibility to cross-reference all design documents and notify the architect of any inadequacy, discrepancy or divergence in or between the full drawing package/design information.  
Drawings to be read in conjunction with full drawing package Issued by Architect and other consultants information.  
Copyright © Flower Michelin Architects LLP 2023

- Refer to window survey for proposed alterations to existing windows.
- Refer to moulding schedule for proposals relating to architraves, coping, ceiling roses, skirting etc.
- Refer to damp proof report and remedials works for damp proofing works to lower ground floor.
- Refer to services information for details relating to drainage and comfort heating/cooling.
- Refer to arboriculturalist reports for tree works.



Revision	Date	Description
A	09.11.23	Consultant/ Client amendments Incorporated
B	22.04.24	Glazing specification updated
C	24.04.24	Updated to planning consultant comments

FLOWER MICHELIN

+44(0)20 7751 0444  
studio@flowermichelin.com

Unit 7-8, 27 Ackmar Road, London, SW6 4UR  
flowermichelin.com



Project	133 Haverstock Hill, London NW3 4RU	Rev	C
Title	Proposed Windows		
Number	312_31_72	Scale	1:200 A3
Status	Planning		