



Location Plan

Disclaimer:

1. Do not scale. Use figured dimensions only. When a scale bar is provided it is for use by the local planning authority solely for the purposes of the planning application to which it relates.
2. Report all drawing errors, omissions and discrepancies to the Architect.
3. All dimensions are to be checked on site by the contractor and such dimensions shall be the contractor's responsibility.
4. This drawing must only be used for the purpose for which it is supplied and its contents must not be reproduced for any purpose without written permission.
5. No areas indicated, or areas calculated from this drawing should be used for valuation purposes or as the basis for development contracts.

© All copyrights Coffey Architects.

Revision	REV	DATE	DESCRIPTION
	1	DEC '17	FOR APPROVAL

Notes



COFFEY / ARCHITECTS

11-12 Great Sutton Street, London, EC1V 0BX / +44 (0)20 7549 2141
www.coffeyarchitects.com

Project Name	Project No.
KINGS CROSS CENTRAL BUILDING Q1	1046

Drawing Name
PROPOSED ROOF PLAN

Status
FOR APPROVAL

Drawn	Checked	Scale	Sheet
HW	SJ	1:200	A3

Drawing No.	Revision No.
KXC-Q1-001-P-1046-20-103	-

Disclaimer

1. Do not scale. Use figured dimensions only. When a scale bar is provided it is for use by the local planning authority solely for the purposes of the planning application to which it relates.
2. Report all drawing errors, omissions and discrepancies to the Architect.
3. All dimensions are to be checked on site by the contractor and such dimensions shall be the contractor's responsibility.
4. The drawing must not be used for the purpose for which it is supplied and its contents must not be reproduced for any purpose without written permission.
5. No areas indicated, or areas calculated from this drawing should be used for valuation purposes or as the basis for development controls.

© All copyrights Coffey Architects.

[illegible]

Notes

- | LEGEND |
|---|
| 1. LOUVRED FACADE PANEL ANODISED FINISH |
| 2. ACOUSTIC LOUVRES WITH PPC FINISH BEHIND FACADE LOUVRES - CHILLER ENCLOSURE WITHIN PLANT ROOM |
| 3. DOUBLE-GLAZED SINGLE-DOOR ANODISED FINISH FRAMING |
| 4. LOUVRED DOUBLE-DOOR ANODISED FINISH |
| 5. SSG DOUBLE-GLAZED DOUBLE-DOOR ANODISED FINISHED FRAMING |
| 6. SSG GLAZED ANODISED FINISHED FRAMING |
| 7. GLAZED ALUMINIUM FACED CLADDING TO COLUMN WITH ALLOWANCE FOR INTEGRATED LIGHTING AND SIGNAGE |
| 8. GLAZED SLIDING ENTRANCE DOOR |
| 9. DOUBLE-GLAZED UNIT |
| 10. PERFORATED ALUMINIUM PANEL ANODISED FINISH IN FRONT OF ALUMINIUM-FACED INSULATED PANEL ANODISED FINISH |
| 11. ALUMINIUM-FACED RAINSCREEN CLADDING ANODISED FINISH |
| 12. PERFORATED ALUMINIUM PANEL ANODISED FINISH IN FRONT OF DOUBLE GLAZED TRANSLUCENT PANEL |
| 13. DOUBLE-GLAZED BACK PAINTED SPANDREL PANEL |
| 14. EMBOSSED ALUMINIUM-FACED INSULATED ANODISED FINISH |
| 15. EMBOSSED ALUMINIUM-FACED RAINSCREEN CLADDING ANODISED FINISH |
| 16. GLAZED BALUSTRADE |
| 17. PERFORATED ALUMINIUM PANEL ANODISED FINISH IN FRONT OF PERFORATED ALUMINIUM PANEL ANODISED FINISH - TO TERRACE AREA |
| 18. ROOFLIGHT |
| 19. GUTTER |
| 20. ALUMINIUM STANDING-SEAM ROOF |
| 21. CURTAIN WALL ROOF VERGE SECTION ANODISED FINISH |



COFFEY / ARCHITECTS

11-12 Great Sutton Street, London, EC1V 0BX / +44 (0)20 7549 2141
www.coffeyarchitects.com

Project Name KINGS CROSS CENTRAL BUILDING Q1		Project No. 1046	
Drawing Name PROPOSED SOUTH ELEVATION			
Status FOR APPROVAL			
Drawn HW	Checked SJ	Scale 1:200	Sheet A3
Drawing No. KXC-Q1-001-P-1046-20-301		Revision No. -	

+55,000 AOD
MAXIMUM PERMITTED
DEVELOPMENT HEIGHT (2)

+42,652 AOD
RIDGE

+39,223 AOD
ROOF VALLEY

+34,820 AOD
SECOND FLOOR FFL

+30,560 AOD
FIRST FLOOR FFL

+26,000 AOD
GROUND FLOOR FFL

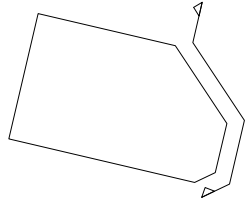
HANDYSIDE
STREET

BUILDING Q1
SOUTH EAST
ELEVATION

BUILDING Q1
EAST ELEVATION

BUILDING Q1
NORTH EAST
ELEVATION

BUILDING Q2
(APPROVED PURSUANT
TO REF. 2016/5580/PI)



Disclaimer

1. Do not scale. Use figured dimensions only. When a scale bar is provided it is for use by the local planning authority solely for the purposes of the planning application to which it relates.
2. Report all drawing errors, omissions and discrepancies to the Architect.
3. All dimensions are to be checked on site by the contractor and such dimensions shall be the contractor's responsibility.
4. This drawing must only be used for the purpose for which it is supplied and its contents must not be reproduced for any purpose without written permission.
5. No areas indicated, or areas calculated from this drawing should be used for valuation purposes or as the basis for development contracts.

© All copyrights Coffey Architects.

Revision

REV	DATE	DESCRIPTION
-	DEC '17	FOR APPROVAL

Notes

LEGEND

1. LOUVRED FACADE PANEL ANODISED FINISH
2. ACOUSTIC LOUVRES WITH PRC FINISH BEHIND FACADE LOUVRES - CHILLER ENCLOSURE WITHIN PLANT ROOM
3. DOUBLE-GLAZED SINGLE-DOOR ANODISED FINISH FRAMING
4. LOUVRED DOUBLE-DOOR ANODISED FINISH
5. SSG DOUBLE-GLAZED DOUBLE-DOOR ANODISED FINISHED FRAMING
6. SSG GLAZING ANODISED FINISHED FRAMING
7. BLACK ANODISED ALUMINIUM CLADDING TO COLUMN WITH ALLOWANCE FOR INTEGRATED LIGHTING AND SIGNAGE
8. GLAZED SLIDING ENTRANCE DOOR
9. DOUBLE-GLAZED UNIT
10. PERFORATED ALUMINIUM PANEL ANODISED FINISH IN FRONT OF ALUMINIUM-FACED INSULATED PANEL ANODISED FINISH
11. ALUMINIUM-FACED RAINSCREEN CLADDING ANODISED FINISH
12. PERFORATED ALUMINIUM PANEL ANODISED FINISH IN FRONT OF DOUBLE-GLAZED TRANSLUCENT PANEL
13. DOUBLE-GLAZED BACK PAINTED SPANDREL PANEL
14. EMBOSSED ALUMINIUM-FACED INSULATED ANODISED FINISH
15. EMBOSSED ALUMINIUM-FACED RAINSCREEN CLADDING ANODISED FINISH
16. GLAZED BALUSTRADE
17. PERFORATED ALUMINIUM PANEL ANODISED FINISH IN FRONT OF PERFORATED ALUMINIUM PANEL ANODISED FINISH - TO TERRACE AREA
18. ROOFLIGHT
19. GUTTER
20. ALUMINIUM STANDING-SEAM ROOF
21. CURTAIN WALL ROOF VERGE SECTION ANODISED FINISH



COFFEY / ARCHITECTS

11-12 Great Sutton Street, London, EC1V 0BX | +44 (0)20 7549 2141
www.coffeyarchitects.com

Project Name KINGS CROSS CENTRAL BUILDING Q1	Project No. 1046
--	---------------------

Drawing Name PROPOSED EAST ELEVATION

Status FOR APPROVAL

Drawn HW	Checked SJ	Scale 1:200	Sheet A3
-------------	---------------	----------------	-------------

Drawing No. KXC-Q1-001-P-1046-20-302	Revision No. -
---	-------------------



Disclaine

1. Do not use. Use figured dimensions only. When a scale bar is provided it is for use by the local planning authority solely for the purposes of the planning application to which it relates.
2. Report all drawing errors, omissions and discrepancies to the Architect.
3. All dimensions are to be checked on site by the contractor and such dimensions shall be the contractor's responsibility.
4. This drawing must only be used for the purpose for which it is supplied and its contents must not be reproduced for any purpose without written permission.
5. No areas indicated, or areas calculated from this drawing should be used for valuation purposes or as the basis for development contracts.

© All copyrights Coffey Architects.

[illegible]

Notes

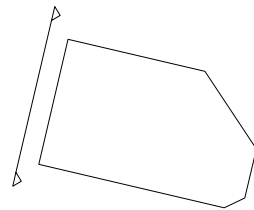
LEGEND

1. LOUVRED FACADE PANEL ANODISED FINISH
2. ACOUSTIC LOUVERS WITH PPC FINISH BEHIND FACADE LOUVRES - CHILLER ENCLOSURE WITHIN PLANT ROOM
3. DOUBLE-GLAZED SINGLE-DOOR ANODISED FINISH FRAMING
4. LOUVRED DOUBLE-DOOR ANODISED FINISH
5. SSG DOUBLE-GLAZED DOUBLE-DOOR ANODISED FINISH FRAMING
6. SSG GLAZING ANODISED FINISH FRAMING
7. GLAZED ALUMINIUM CLADDING TO COLUMN WITH ALLOWANCE FOR INTEGRATED LIGHTING AND SIGNAGE
8. GLAZED SLIDING ENTRANCE DOOR
9. DOUBLE-GLAZED UNIT
10. PERFORATED ALUMINIUM PANEL ANODISED FINISH IN FRONT OF ALUMINIUM-FACED INSULATED PANEL ANODISED FINISH
11. ALUMINIUM-FACED RAINSCREEN CLADDING ANODISED FINISH
12. PERFORATED ALUMINIUM PANEL ANODISED FINISH IN FRONT OF DOUBLE-GLAZED TRANSLUCENT PANEL
13. DOUBLE-GLAZED BLACK PAINTED SPANDREL PANEL
14. EMBOSSED ALUMINIUM-FACED INSULATED ANODISED FINISH
15. EMBOSSED ALUMINIUM-FACE RAINSCREEN CLADDING ANODISED FINISH
16. GLAZED BALUSTRADE
17. PERFORATED ALUMINIUM PANEL ANODISED FINISH IN FRONT OF PERFORATED ALUMINIUM PANEL ANODISED FINISH - TO TERRACE AREA
18. NIGHTLIGHT
19. CUTTER
20. ALUMINIUM STANDING-SEAM ROOF
21. CURTAIN WALL ROOF VERGE SECTION ANODISED FINISH



11-12 Great Sutton Street, London, EC1V 0BX / +44 (0)20 7549 2141
www.coffeyarchitects.com

Project Name KINGS CROSS CENTRAL BUILDING Q1		Project No. 1046	
Drawing Name PROPOSED NORTH ELEVATION			
Status FOR APPROVAL			
Drawn HW	Checked SJ	Scale 1:200	Sheet A3
Drawing No. KXC-Q1-001-P-1046-20-303		Revision No. -	



Disclaimer

+45.000 AOD
MAXIMUM PERMITTED
VELOPMENT HEIGHT (1)

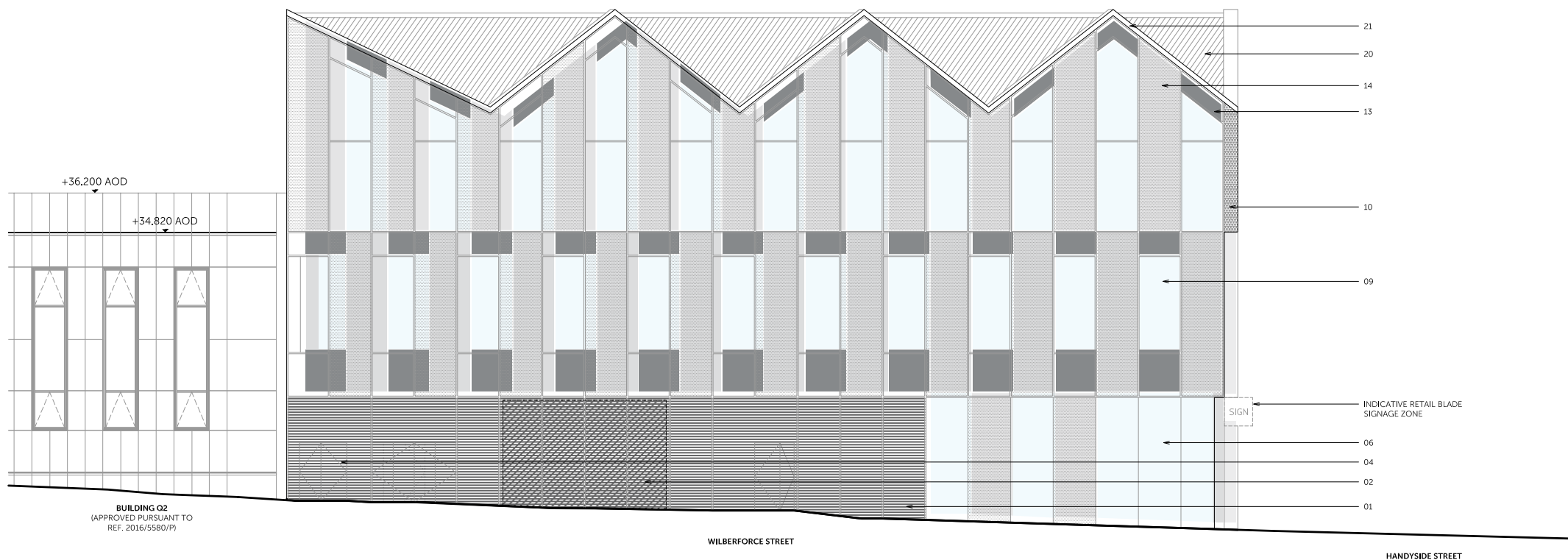
+42.652 AOD
RIDGE

+39.223 AOD
ROOF VALLEY

+34.820 AOD
SECOND FLOOR FFL

+30.560 AOD
FIRST FLOOR FFL

+26.000 AOD
GROUND FLOOR FFL



BUILDING Q2
(APPROVED PURSUANT TO
REF. 2016/5580/P)

WILBERFORCE STREET

HANDYSIDE STREET

Notes

LEGEND

1. LOUVRED FACED ALUMINUM ANODOSED FINISH
2. ACOUSTIC LOUVRES WITH PPC FINISH BEHIND FACADE LOUVRES - CHILLER ENCLOSURE WITHIN PLANT ROOM
3. DOUBLE-GLAZED SINGLE-DOOR ANODOSED FINISH FRAMING
4. LOUVRED DOUBLE-DOOR ANODOSED FINISH
5. SSG DOUBLE-GLAZED DOUBLE-DOOR ANODOSED FINISH FRAMING
6. SSG GLAZING ANODOSED FINISH FRAMING
7. DOCK ANODOSED ALUMINIUM CLADDING TO COLUMN WITH ALLOWANCE FOR INTEGRATED LIGHTING AND SIGNAGE
8. GLAZED SLIDING ENTRANCE DOOR
9. GLAZED GLAZED UNIT
10. PERFORATED ALUMINIUM PANEL ANODOSED FINISH IN FRONT OF ALUMINIUM-FACED INSULATED PANEL ANODOSED FINISH
11. ALUMINIUM-FACED RAINSCREEN CLADDING ANODOSED FINISH
12. PERFORATED ALUMINIUM PANEL ANODOSED FINISH IN FRONT OF DOCK GLAZED TRANSIT PANEL
13. DOUBLE-GLAZED BACK PAINTED SPANDREL PANEL
14. EMBOSSED ALUMINIUM-FACED INSULATED ANODOSED FINISH
15. EMBOSSED ALUMINIUM-FACED RAINSCREEN CLADDING ANODOSED FINISH
16. GLAZED BALUSTRADE
17. PERFORATED ALUMINIUM PANEL ANODOSED FINISH IN FRONT OF PERFORATED ALUMINIUM PANEL ANODOSED FINISH - TO TERRACE AREA
18. ROOFLIGHT
19. GUTTER
20. ALUMINIUM STANDING-SEAM ROOF
21. CURTAIN WALL ROOF VERGE SECTION ANODOSED FINISH



COFFEY / ARCHITECTS

11-12 Great Sutton Street, London, EC1V 0BX / +44 (0)20 7549 2141
www.coffeyarchitects.com

Project Name	Project No.
KINGS CROSS CENTRAL BUILDING Q1	1046

Drawing Name

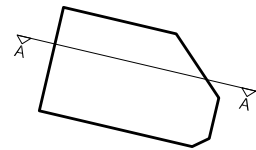
PROPOSED WEST ELEVATION

Status
FOR APPROVAL

Drawn HW	Checked SJ	Scale 1:200	Sheet A3
-------------	---------------	----------------	-------------

Drawing No.	Revision No.
KXC-Q1-001-P-1046-20-304	-

+55,000 AOD
MAXIMUM PERMITTED
DEVELOPMENT HEIGHT (2)



Disclaimer

1. Do not scale. Use figured dimensions only. When a scale bar is provided it is for use by the local planning authority solely for the purposes of the planning application to which it relates.
2. Report all drawing errors, omissions and discrepancies to the Architect.
3. All dimensions are to be checked on site by the contractor and such dimensions shall be the contractor's responsibility.
4. This drawing must only be used for the purpose for which it is supplied and its contents must not be reproduced for any purpose without written permission.
5. No areas indicated, or areas calculated from this drawing should be used for valuation purposes or as the basis for development contracts.

© All copyrights Coffey Architects.

Revision	REV	DATE	DESCRIPTION
	-	DEC '17	FOR APPROVAL

Notes



COFFEY / ARCHITECTS

11-12 Great Sutton Street, London, EC1V 0BX / +44 (0)20 7549 2141
www.coffeyarchitects.com

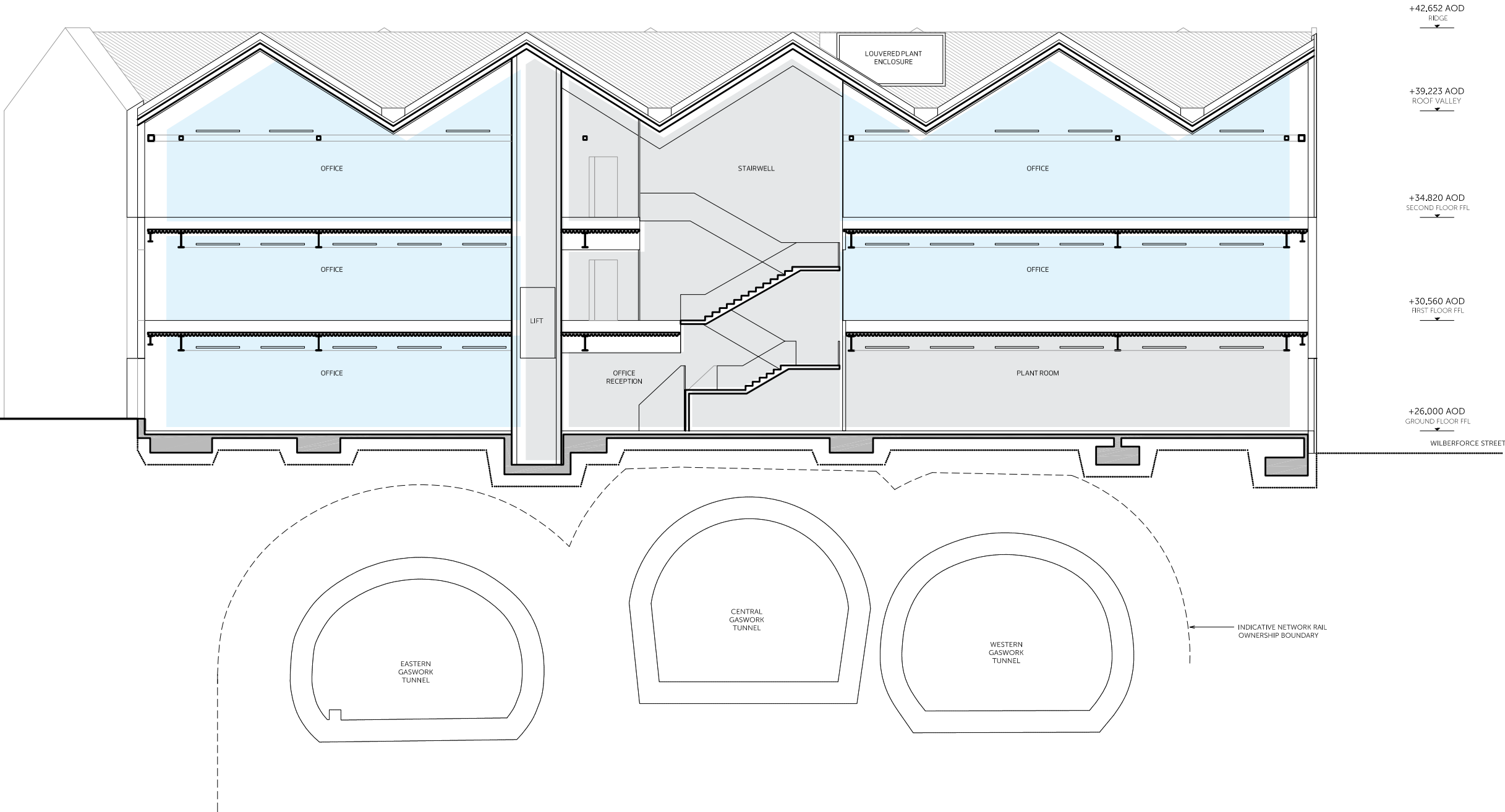
Project Name	Project No.
KINGS CROSS CENTRAL BUILDING Q1	1046

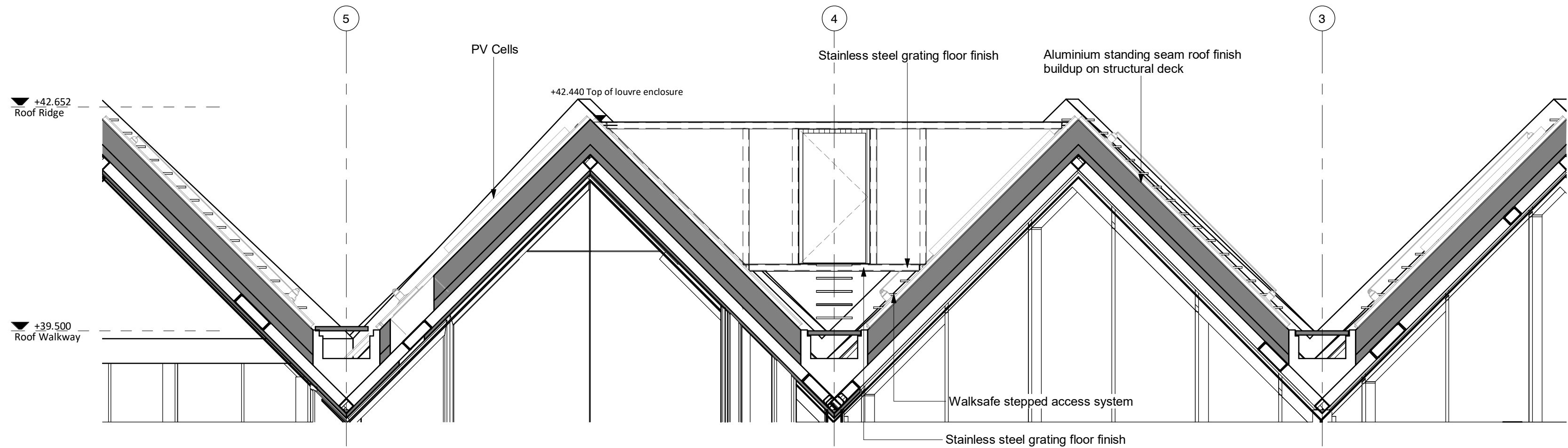
Drawing Name
PROPOSED SECTION A-A

Status
FOR APPROVAL

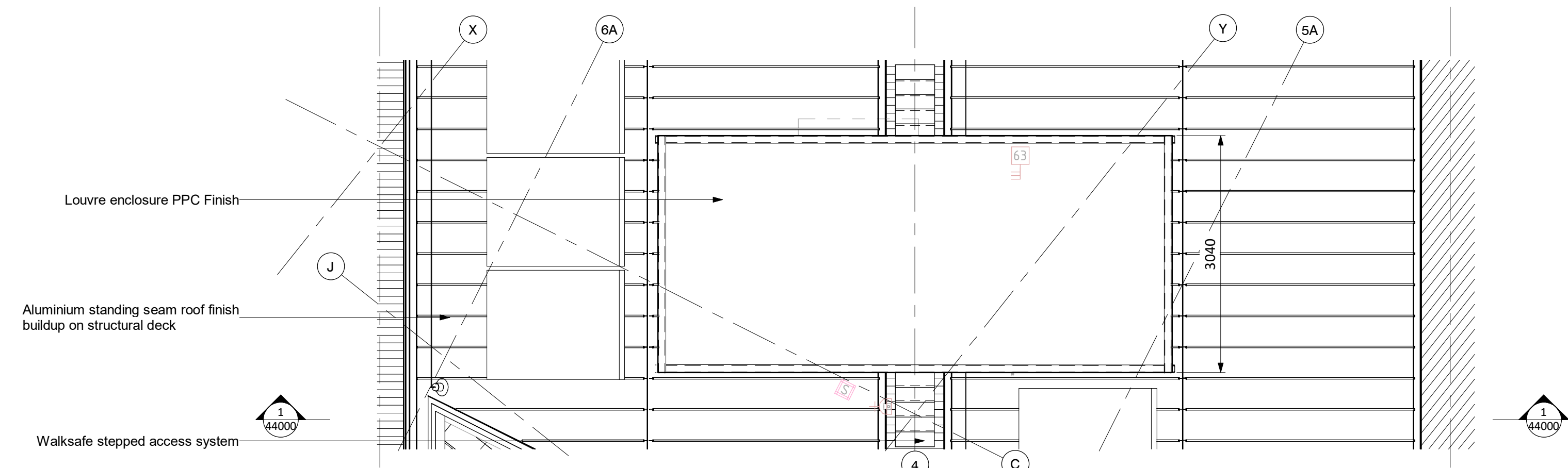
Drawn	Checked	Scale	Sheet
HW	SJ	1:200	A3

Drawing No.	Revision No.
KXC-Q1-001-P-1046-20-201	-

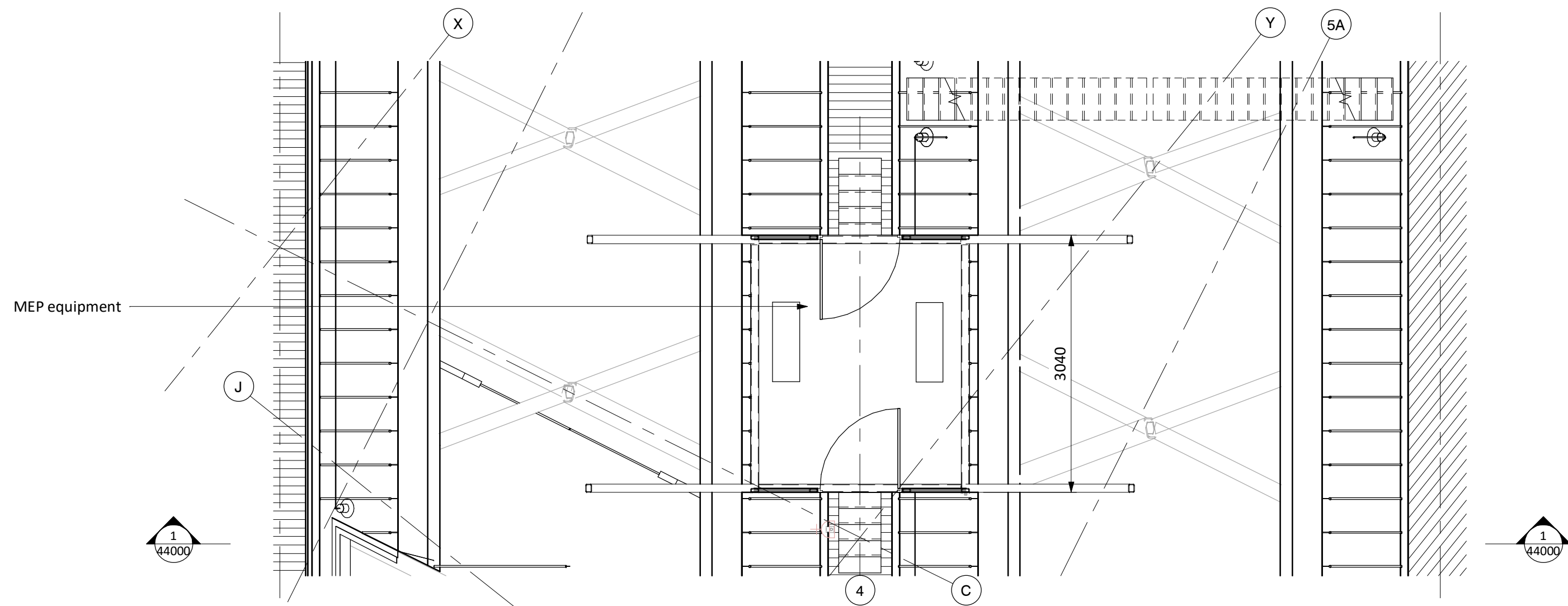




1 Roof plant enclosure section
1 : 50



2 Plant Enclosure Roof Plan
1 : 50



3 Plant Enclosure Roof Plan
1 : 50

STAGE 4 ISSUE
SUBJECT TO FINALISING ROOF DESIGN.

S4	P34	27.07.18	STAGE 4 ISSUE.
S1	P18	20.06.18	First issue for co-ordination.
STATUS	REV	DATE	DESCRIPTION
CLIENT			REVISED BY AT
BAM Construction			CHECKED BY CC
			ORIGINATOR NO 151890

CONSULTANT
STRIDE TREGLOWN
www.stridetreglown.com © Stride Treglown Limited 2018
PROJECT
King's Cross Q1
Handyside Street
King's Cross Central
London N1C 4AL

DRAWING TITLE
Roof Plant Enclosure

SUITABILITY STATUS S4 : STAGE 4 ISSUE	SCALE 1 : 50 @ A1
--	----------------------

SITE PROJ.COLLECT. ZONE PROJ.REF ROLE ORIGIN. CLASS. NUMBER KXC-Q1-03-001-A-STL-31-44000	REVISION P34
---	-----------------