



ttp consulting
transport planning specialists

Newview Properties Limited

**New build adjacent to No.63
Netherhall Gardens**

Transport Statement

April 2024

TTP Consulting Ltd
111-113 Great Portland Street
London W1W 6QQ
Tel: 020 7100 0753

www.ttp-consulting.co.uk

Registered in England: 09931399

Contents

1	INTRODUCTION	1
2	THE EXISTING SITUATION	3
	Site and Surrounding Area	3
	Access on Foot	4
	Access by Bicycle	5
	Public Transport Accessibility	6
	Local Highway Network	7
	Car Ownership	8
3	POLICY	9
	National Planning Policy Framework	9
	London Plan	10
	Camden Local Plan 2017	11
	Camden Planning Guidance: Transport	11
4	DEVELOPMENT PROPOSALS AND EFFECTS	12
	Proposal Overview	12
	Access	13
	Car Parking	13
	Cycle Parking	13
	Trip Generation	14
	Deliveries and Servicing	14
	Waste Collection	14
5	SUMMARY AND CONCLUSION	15
	Summary	15
	Conclusion	15

Figures

Figure 1.1	-	Site Location Plan
Figure 2.1	-	Site Boundary Plan
Figure 2.2	-	Walking Isochrone Map
Figure 2.3	-	Cycling Isochrone Map
Figure 4.1	-	Proposed Application Plans

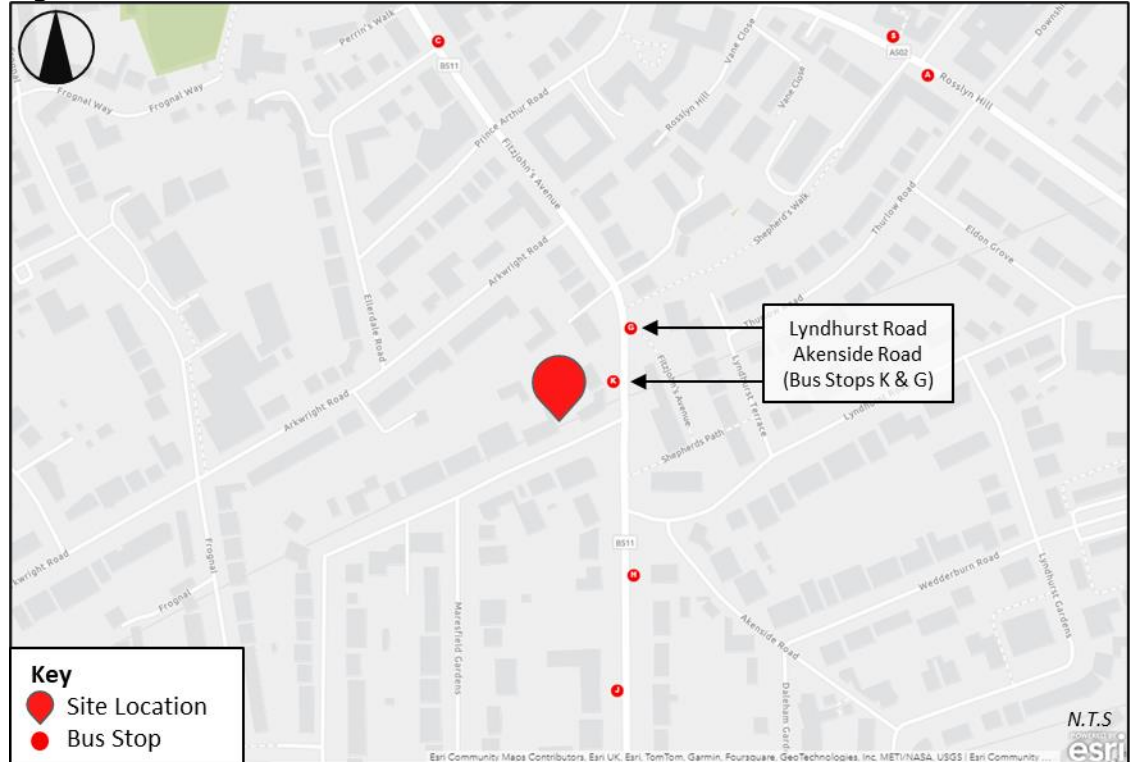
Appendices

Appendix A	-	TfL Bus Spider Map
Appendix B	-	Parking Survey Data
Appendix C	-	Proposed Application Plans
Appendix D	-	Indictive Proposed Highway Works Drawing

1 INTRODUCTION

- 1.1 TTP Consulting has been appointed by Newview Properties Limited ('the Applicant') to provide transport planning advice in relation to the new build adjacent to No.63 Netherhall Gardens, NW3, located in the London Borough of Camden. A site location plan is provided at **Figure 1.1**.

Figure 1.1: Site Location Plan



- 1.2 The site, which forms a rectangular plot, operates as a garage with storage for a single car for the adjacent property at No. 63 Netherhall Gardens. The site is located on the northern side of the Netherhall Gardens circa 40m west of the junction with Fitzjohn's Avenue. The nearest bus stop Lyndhurst Road Akenside Road 'K & G' is located 120m to the east whilst Hampstead Underground Station is located circa 640m to the north.
- 1.3 The development proposal seeks to construct a purpose-built two-storey, 2-bedroom residential dwelling with a basement. The existing vehicle crossover and driveway would be closed and reinstated as footway, with a single pedestrian access provided in the new wall treatment. Cycle storage and a bin store would be provided externally at the front of the property within a secure and enclosed store.

1.4 This report considers the effect of development in transport terms including car parking, cycle parking, access, refuse collection and, deliveries and servicing. The remainder of the report is structured as follows:

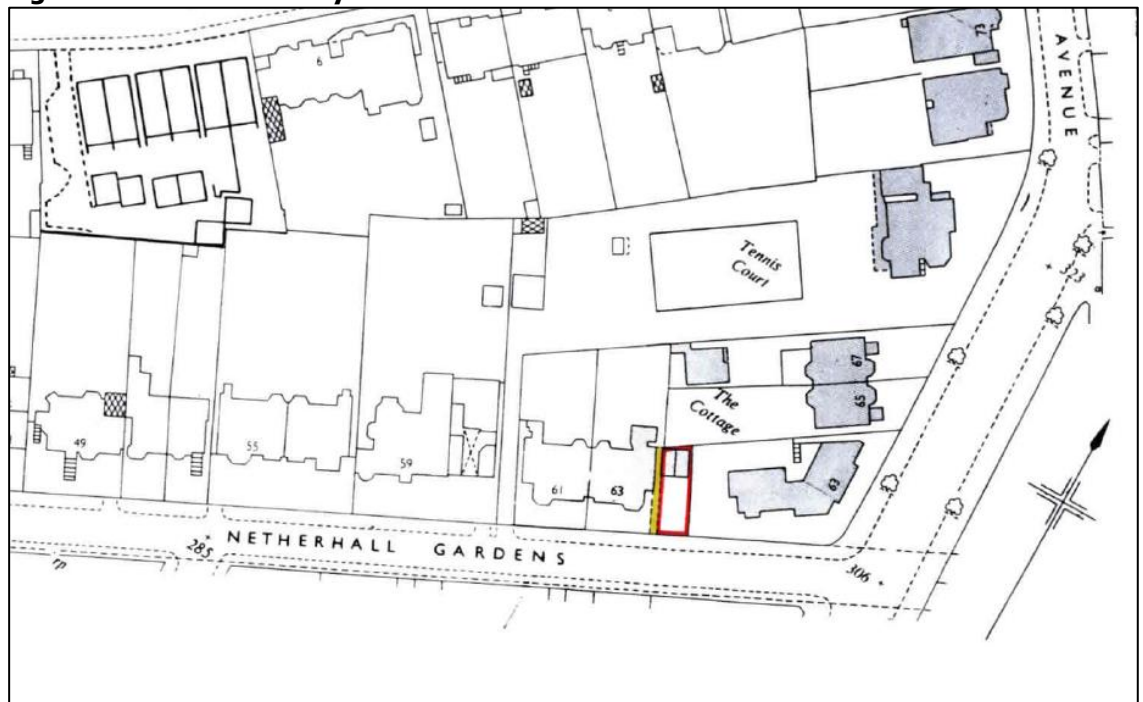
- Section 2 summarises the existing situation;
- Section 3 reviews relevant transport policies;
- Section 4 sets out the development proposals and considers the potential effects; and
- Section 5 provides a summary and conclusion.

2 THE EXISTING SITUATION

Site and Surrounding Area

- 2.1 The proposal relates to the garage adjacent to No. 63 Netherhall Gardens. The site boundary is shown in red at **Figure 2.1**. The site is bound to the west by No.63 Netherhall Gardens, whilst the eastern boundary faces the flank elevation of the flats at No. 63 Fitzjohn's Avenue. The northern site boundary incorporates a part height wall with very dense foliage above and the southern site boundary fronts Netherhall Gardens.

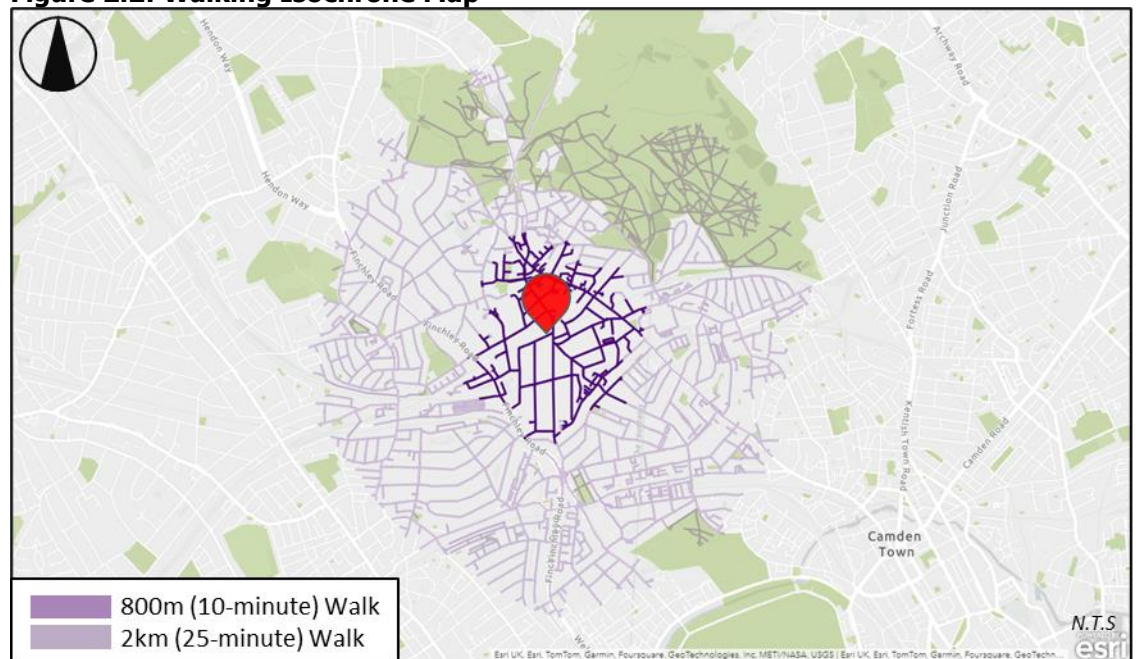
Figure 2.1: Site Boundary Plan



Access on Foot

- 2.3 Walking is a sustainable travel mode that provides convenient access to local destinations and public transport opportunities. Footways on both sides of Netherhall Gardens provide connections to local amenities and public transport opportunities in the wider area. Crossings in the local vicinity of the site benefit from dropped kerbs and tactile paving.
- 2.4 Like much of London, the site benefits from being within a short walking distance of public transport opportunities and local facilities. Roughly half of all walking opportunities in London are part of longer public transport journeys, for example, walking to or from the bus stop or tube / train station, whilst a third of car journeys are within a 25-minute (2km) walk, suggesting there are real opportunities for active modes to replace the car.
- 2.5 **Figure 2.2** provides details of an 800m (10-minute) and 2km (25-minute) catchment zone surrounding the site. The map shows that areas such as Hampstead Heath, Belsize Park, South Hampstead and West Hampstead are accessible within a 25-minute walk.

Figure 2.2: Walking Isochrone Map



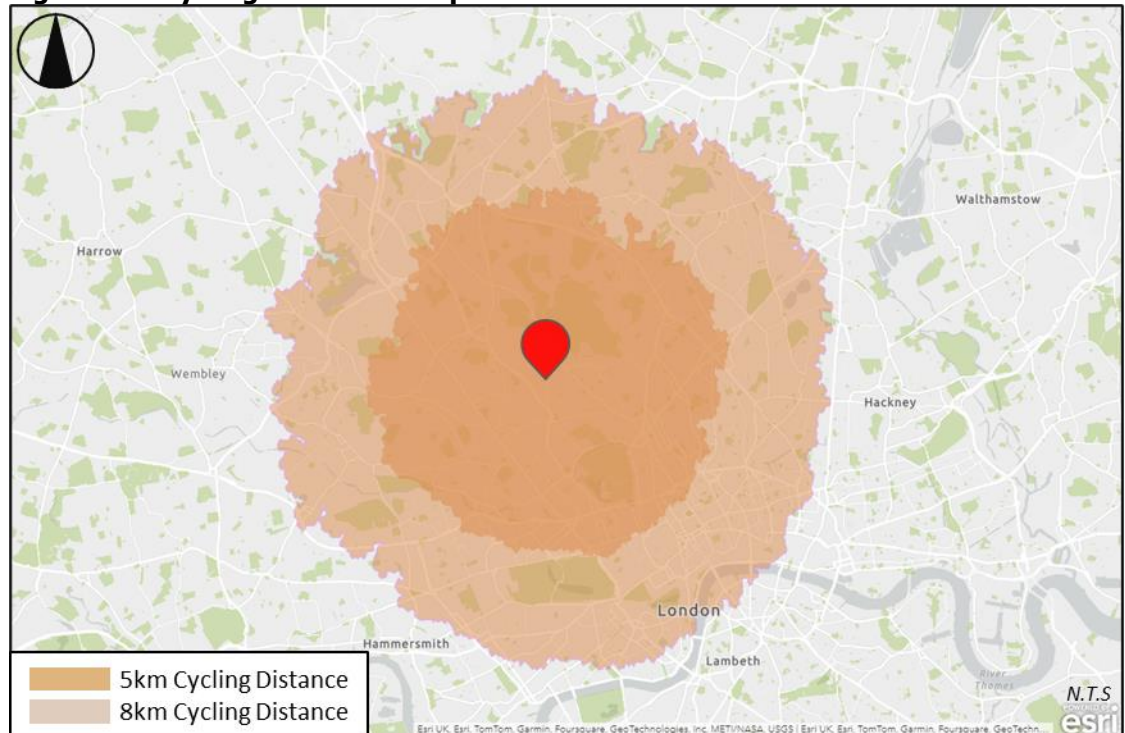
- 2.6 **Table 2.1** sets out details of distances between the site and public transport opportunities and local amenities.

Table 2.1: Approximate Distances to Local Public Transport Opportunities			
Amenity	Location	Distance	Approximate Walking Time*
Public Transport Opportunities			
Lyndhurst Road Akenside Road (Bus Stops G & K)	Fitzjohn's Avenue	60-120m	1-2-minutes
St Marys School (Bus Stops H & J)	Fitzjohn's Avenue	160m	2-minutes
Fitzjohn's Avenue (Bus Stop C)	Fitzjohn's Avenue	320m	4-minutes
Hampstead Station	Hampstead High Street	640m	8-minutes
Finchley Road and Frognal Station	Finchley Road	640m	8-minutes
Belsize Park Station	Haverstock Hill	1.1km	14-minutes
Amenities			
Devonshire House Nursery School and Middle School	Arkwright Road	320m	4-minutes
Enterprise Car Club	Nutley Terrace	320m	4-minutes
The Horseshoe Pub	Heath Street	480m	6-minutes
Roni's Bakery	Belsize Lane	640m	8-minutes
Gail's Bakery	Hampstead High Street	640m	8-minutes
Ritz Pharmacy	Heath Street	640m	8-minutes
Camden Art Centre	Arkwright Road	800m	10-minutes
Hampstead Heath	Parliament Hill	1.4km	18-minutes
*Based on 80m per minute walking speed			

Access by Bicycle

- 2.7 It is generally accepted that cycling is a sustainable mode of travel for journeys up to 8km in length, although in London, longer journeys are more commonplace. **Figure 2.3** shows a 5km and 8km cycling catchment from the site. Within the 5km catchment zone, areas such as Camden Town, Hampstead and Willesden can be reached, whilst areas such as Kensington, Westminster, Islington and Finchley can be reached within the 8km catchment.
- 2.8 TfL's Journey Planner tool allows for cycle route planning dependant on the difficulty of the route being fast, moderate or easy. The following stations can be reached from the site in the following times:
- Hampstead Underground (1-minutes / 2-minutes / 3-minutes);
 - Finchley Road Underground (2-minutes / 3-minutes / 4-minutes);
 - Belsize Park Underground (3-minutes / 4-minutes / 5-minutes);
 - West Hampstead Rail (4-minutes / 6-minutes / 8-minutes); and
 - Hampstead Heath Rail (3-minutes / 5-minutes / 5-minutes).

Figure 2.3: Cycling Isochrone Map



Public Transport Accessibility

By Bus

- 2.9 The closest bus stops 'Lyndhurst Road Akenside Road Stops G & K' are both located within 120m east of the site on Fitzjohn's Avenue providing access to bus routes 46 and 603, offering connections to St Bartholomew's Hospital and Paddington.
- 2.10 A summary of local bus stops and the associated services is provided within **Table 2.2**, whilst a copy of the relevant TfL bus spider map is contained in **Appendix A**.

Table 2.2: Summary of Local Bus Services					
Bus Stop	Route		Frequency every 'x' minutes		
	No.	Destination	Mon-Fri	Sat	Sun
Lyndhurst Road / Akenside Road (Stop K)	46	Paddington Station – St Bartholomew's Hospital	9-12	10-11	15
Hampstead Station	268	Golders Green Station – O2 Centre / Sainsbury's	15	15	20
Lyndhurst Road / Akenside Road (Stop K)	603	Swiss Cottage Station – Muswell Hill	Mon-Fri Schooldays (4 x Daily)		

By Rail/Underground

- 2.11 The closest station, Hampstead Underground Station, is located approximately 640m (8-minute walk) north of the site on Hampstead High Street, providing access to Northern Line services with regular departures from Edgware to Kennington and Morden.
- 2.12 Finchley Road & Frognal Station is also located nearby, approximately 640m (8-minute walk) south-west on Finchley Road offering access Overground services, with regular departures to destinations including Richmond, Stratford and Clapham Junction.
- 2.13 Finchley Road Underground Station is located circa 800m (10-minute walk) to the south on Finchley Road providing access to both the Jubilee and Metropolitan Line services. The Jubilee Line offers connections between Stanmore and Stratford whilst the Metropolitan Line provides connections between Aldgate and Amersham and Uxbridge.

Public Transport Accessibility Level (PTAL)

- 2.14 Public Transport Accessibility Levels (PTALs) are a theoretical measure of the accessibility of a given point to the public transport network, considering walk access time and service availability. The method is essentially a way of measuring the density of the public transport network at a particular point. The scale has a range of 0 (worst) to 6b (best), with 6b demonstrating high levels of accessibility. The site has a PTAL of '5', which indicates the site has 'very good' levels of public transport accessibility.

Local Highway Network

- 2.15 Netherhall Gardens is a two-way, 30mph road which operates broadly northeast to southwest. It is a no through road for motor vehicles, connecting to Fitzjohn's Avenue to the northeast. Pedestrian access can be taken to the southwest through to the A41 Finchley Road. The road forms part of the Controlled Parking Zone (CPZ) 'CA-B' which operates from Monday to Friday between 09:00-18:30 and Saturday from 09:30-13:30.
- 2.16 There are on-street resident permit controlled parking bays on the northern and southern side of Netherhall Gardens. There is a length of single yellow line in front of the crossover for the site
- 2.17 Fitzjohn's Avenue (B511) is a two-way road that operates broadly north to south circa 40m east of the Site. At its northern extent it becomes known as Heath Street which provides access to Hampstead High Street and the associated amenities whilst to the south it becomes known as College Crescent, providing southbound travel towards the A41 Finchley Road.

Parking Survey

- 2.18 An on-street parking survey was conducted on Tuesday 6th February 2024 at 00:30am and on Wednesday 7th February 2024 at 00:30am. The surveys were carried out in accordance with a methodology derived by the London Borough of Lambeth and covered on-street parking opportunities within a 200-metre walking distance of the site during the overnight period, highlighting parking opportunities where demand is at its highest.
- 2.19 **Table 2.3** summarises the parking survey results showing that there are 96 overnight parking opportunities in residents bays within a 200m walk of the site. On Tuesday 6th, 72 parked vehicles were recorded, equating to occupancy levels of 75%, whilst on Wednesday 7th there were 70 parked vehicles, equating to occupancy levels of 73%.

Table 2.3 – Parking Survey Summary of Results for Residents Bays by Road					
Road	Capacity	Parked		Occupancy	
		Tuesday	Wednesday	Tuesday	Wednesday
Akenside Road	7	2	1	29%	14%
Fitzjohn's Avenue	21	21	20	100%	95%
Lyndhurst Road	5	2	1	40%	20%
Maresfield Garden	21	14	13	67%	62%
Netherhall Gardens	42	33	35	79%	83%
Total	96	72	70	75%	73%

Car Ownership

- 2.20 A review of car ownership details has been undertaken in order to understand existing levels of car ownership in the local area. Reference has been made to the 2021 Census for two-bedroom flats within the super output area – lower layer in which the site is located (Camden 004B), which revealed that on average there were 0.54 cars per 2-bedroom flats.

3 POLICY

National Planning Policy Framework

- 3.1 The National Planning Policy Framework (NPPF) was most recently updated in December 2023. It sets out the Government's planning policies for England and how these are expected to be applied.
- 3.2 Paragraph 115 advises that:
- "Development should only be prevented or refused on highways grounds if there would be an unacceptable impact on highway safety, or the residual cumulative impacts on the road network would be severe."*
- 3.3 Paragraph 116 states that:
- "Within this context, applications for development should:*
- a) give priority first to pedestrian and cycle movements, both within the scheme and with neighbouring areas; and second – so far as possible – to facilitating access to high quality public transport, with layouts that maximise the catchment area for bus or other public transport services, and appropriate facilities that encourage public transport use;*
 - b) address the needs of people with disabilities and reduced mobility in relation to all modes of transport;*
 - c) create places that are safe, secure and attractive – which minimise the scope for conflicts between pedestrians, cyclists and vehicles, avoid unnecessary street clutter, and respond to local character and design standards;*
 - d) allow for the efficient delivery of goods, and access by service and emergency vehicles; and*
 - e) be designed to enable charging of plug-in and other ultra-low emission vehicles in safe, accessible and convenient locations."*
- 3.4 When considering the transport effects of a development, NPPF states at paragraph 117 that:
- "All developments that will generate significant amounts of movement should be required to provide a travel plan, and the application should be supported by a transport statement or transport assessment so that the likely impacts of the proposal can be assessed."*

London Plan

- 3.5 The London Plan is a Spatial Development Strategy which sets out the framework for the development of London over a period of 20-25 years and was published in March 2021. The document strives to promote a healthier and more active London with improving air quality and reducing car parking provision at the forefront of the plan.
- 3.6 Policy T1, 'Strategic Approach to Transport' states that new development proposals should facilitate the delivery of the Mayor's strategic target of 80% of all trips in London to be made by foot, cycle or public transport by 2041.
- 3.7 Policy T2, 'Healthy Streets' states that proposals should demonstrate how they will deliver improvements that support the Ten Healthy Streets Indicators in line with Transport for London guidance, reduce the dominance of vehicles on London's streets and be permeable by foot and cycle, connecting to local walking and cycling networks as well as public transport.
- 3.8 Policy T5, 'Cycling', suggests that barriers to cycling can be removed and that a healthy environment in which people choose to cycle can be created through appropriate levels of cycle parking which are fit for purpose, secure and well-located. The cycle parking standards as set out in Table 10.2 of the London Plan are summarised in **Table 3.1**.

Table 3.1: Minimum Cycle Parking Standards	
Use Class	Long-stay
C3-C4 dwellings (all)	1 space per studio or 1 person 1 bedroom dwelling. 1.5 spaces per 2 person 1 bedroom dwelling. 2 spaces per all other dwellings.

- 3.9 The maximum residential car parking standards are set out in Table 10.3 of the London Plan, with the relevant standards shown in **Table 3.2**.

Table 3.2: Maximum Car Parking Standards	
Location	Maximum Parking Provision
All areas of PTAL 5-6	Car free

Camden Local Plan 2017

- 3.1 The Local Plan was adopted by the Council on 3rd July 2017 and forms the basis for planning decisions and future development in the borough. Chapter 10 provides details on the transport policy objectives for the borough including:
- Policy T1 - Prioritising walking, cycling and public transport;
 - Policy T2 - Parking and car-free development;
 - Policy T3 - Transport infrastructure; and
 - Policy T4 - Sustainable movement of goods and materials.
- 3.2 With regard to cycle parking, Policy T1 states that developments should provide cycle parking in line with or exceeding London Cycle Design Standards.
- 3.3 In regard to car parking, the document states that the Council will limit the availability of parking and require all new developments in the borough to be car-free.

Camden Planning Guidance: Transport

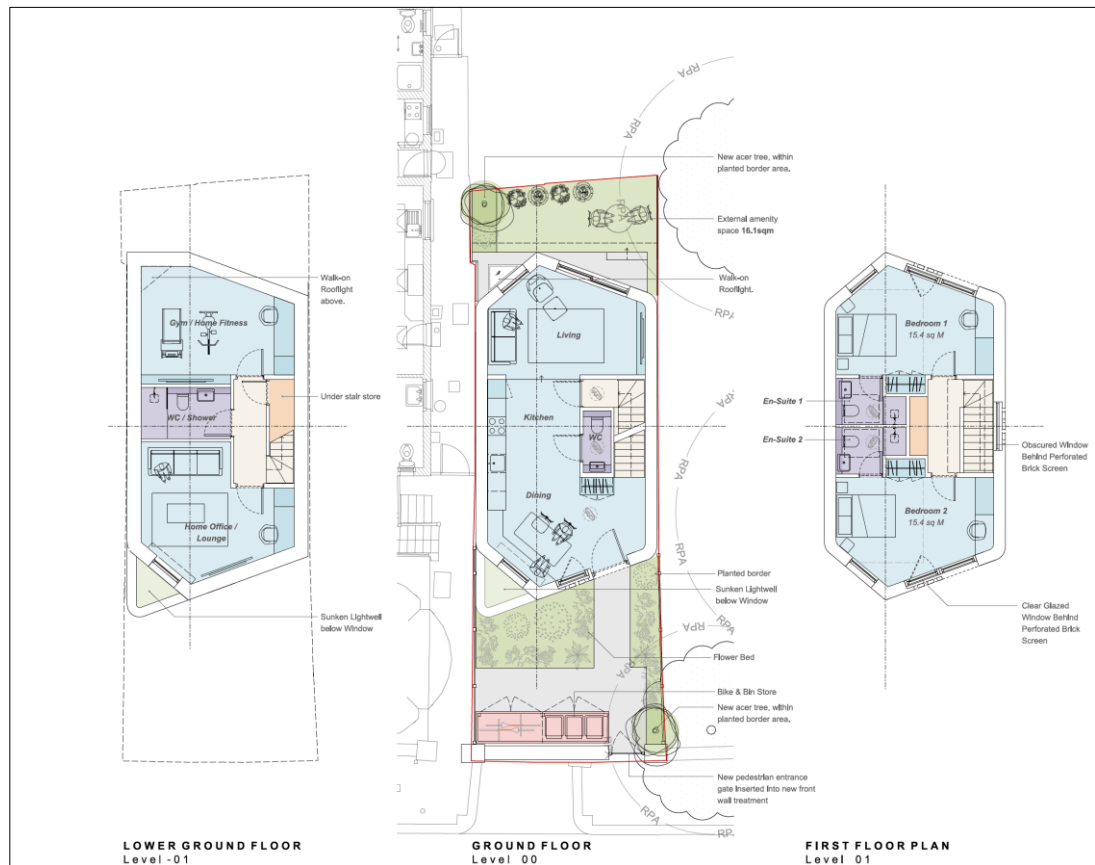
- 3.4 The Camden Planning Guidance (CPG) on Transport was adopted in January 2021 and supports the policies in the Camden Local Plan 2017. The guidance is consistent with the Local Plan and forms a supplementary planning document which is an additional consideration in planning decisions.
- 3.5 Chapter 8 'Cycling Facilities' states that *"Applicants must provide, as a minimum, the quantity of cycle parking spaces as set out in the London Plan"*.

4 DEVELOPMENT PROPOSALS AND EFFECTS

Proposal Overview

- 4.1 The development proposal seeks to construct a purpose-built 2-bedroom private residential dwelling from basement through to the first floor level in place of the existing garage adjacent to No. 63 Netherhall Gardens.
- 4.2 The existing vehicle crossover and driveway would be closed and replaced with a full height kerb and footway. Access to the new dwelling would be taken via a gate through the new boundary wall treatment. Cycle and bin storage would be provided externally at the front of the property within a secure and enclosed store. **Figure 4.1** provides an extract of the proposed lower ground, ground and first floor plans, which are contained at **Appendix C**.

Figure 4.1: Proposed Application Plans



Access

- 4.3 The existing vehicle crossover will be closed and reinstated with a full-height kerb and footway, and as such there will be no vehicular access to the site associated with the proposed development. An indicative highway works drawing is contained in **Appendix D**. It is envisaged that the scope of the highway works would be agreed by way of a Section 278 agreement.
- 4.4 The existing yellow line would also be replaced with white markings to provide an additional on-street car parking space to be reinstated into the existing CPZ. This will require a change to the Traffic Management Order.

Car Parking

- 4.5 There will be no car parking provided. The proposed development would be 'car-free' and as such is in accordance with Camden Local Plan Policy T2 and London Plan Policy T6.1, which requires that residential developments located in areas of PTAL 5 – 6 should be car-free. However, it is acknowledged that the proposed development has the potential to generate some on-street parking demand, and as such, a parking assessment has been undertaken.
- 4.6 A review of car ownership data revealed that there were on average 0.54 cars per 2-bedroom dwelling; based on this, the proposed development could result in a demand for a maximum of 1 car seeking to park on-street. Having regard to the existing parking demand surveys presented in Section 2, if the potential parking demand for the new two-bedroom dwelling was added to the existing parking demand, then occupancy levels would increase to 71%, which remains below the threshold at which an area is considered to represent levels of 'parking stress'.
- 4.7 Furthermore, the proposals include the closure of the existing vehicle crossover and removal of the yellow lines in order to provide one additional on-street space, and as such the potential parking demand as a result of the development is offset by the ability to provide an additional on-street parking space.

Cycle Parking

- 4.8 The proposed development will provide 2 cycle parking spaces. This level of provision is in accordance with the London Plan standards, which require 2 spaces per 2-bedroom dwellings. Cycle parking will be provided via a Sheffield stand located in the front garden of the new property, within a secure and enclosed cycle store.

Trip Generation

- 4.9 Given the small scale of development, a first-principles approach has been used in order to estimate the level of person trips expected to be generated by the proposed development. The proposals will provide a new two-bedroom dwelling with an occupancy of up to 4 persons. As such, the number of extra person trips generated is therefore expected to be minimal with up to 4 departures in the morning peak and up to 4 arrivals in the evening peak.
- 4.10 Furthermore, the site achieves a PTAL rating of 5, benefits from being located within a short walking distance of local bus stops and 640m from Hampstead Station, and is in close proximity to a number of local facilities and amenities. As such, a vast majority of trips are expected to be undertaken by non-car modes.

Deliveries and Servicing

- 4.11 Deliveries to the new dwelling will take place on-street on Netherhall Gardens and are likely to consist of post, the delivery of household goods or the delivery of goods purchased online. The majority will be undertaken by a light goods vehicle or Transit style vans, with many already travelling in the area and undertaking similar delivery drop-off activity.
- 4.12 On average, 1 delivery per 10 residential units could be expected per day on a day to day basis, and as such, the anticipated level of associated vehicle activity related to this development is considered negligible. Any delivery vehicles would stop on-street to make deliveries to the new dwelling in a similar manner to the existing properties that neighbour the site.

Waste Collection

- 4.13 Waste storage will be located externally at the front of the development within a secure and enclosed bin store, accessible from the pedestrian access on Netherhall Gardens. Waste collection vehicles will stop on-street on Netherhall Gardens to collect waste as per the existing arrangement for the neighbouring properties.

5 SUMMARY AND CONCLUSION

Summary

5.1 TTP Consulting has been appointed to provide transport planning advice in relation to the proposed 2-bedroom residential development at 63 Netherhall Gardens, NW3, located in the London Borough of Camden.

5.2 In summary it is considered that:

- The site is located on the northern side of Netherhall Gardens and comprises a single garage and driveway. The site achieves a PTAL rating of 5 and is accessible by public transport with bus stops and rail services located within a convenient walking distance.
- The proposals seek to construct a purpose built, two-storey 2-bedroom private residential dwelling with a basement. Pedestrian and cycle access will be provided from Netherhall Gardens.
- The development will be car free and the existing vehicle crossover will be closed and reinstated as footway, with works secured through S278 agreement. Any changes to the markings on the carriageway would require a change to the Traffic Management Order.
- Cycle parking for two bicycles and bins will be provided externally at the front of the property within secure and enclosed stores.
- Delivery and servicing arrangements will occur on-street as per the existing neighbouring properties, with opportunities for vehicles to stop on Netherhall Gardens.

Conclusion

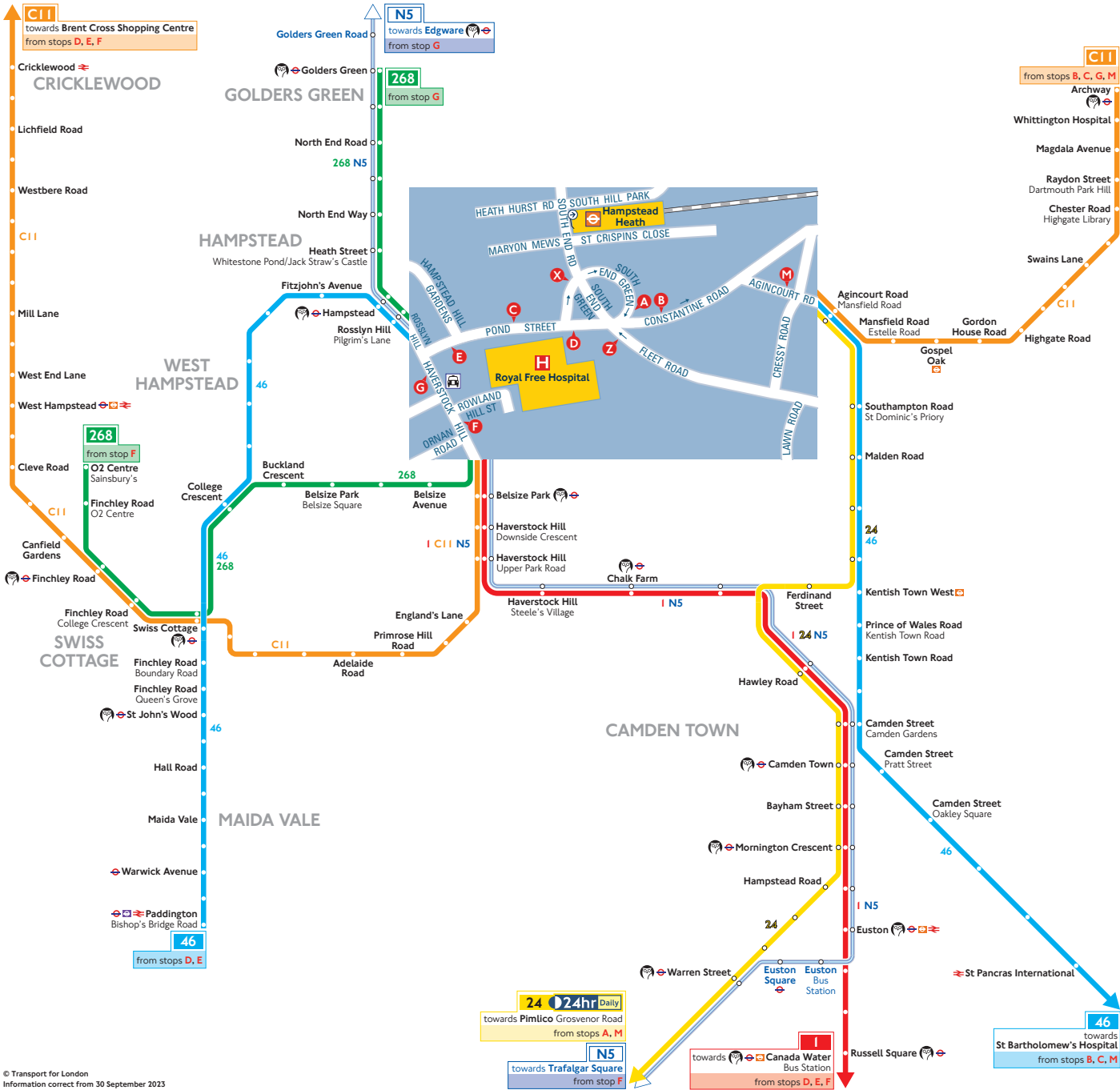
5.3 The proposed scheme is consistent with relevant transport planning policy guidance and will not give rise to any material transport related impacts. It therefore meets the test of the NPPF and paragraph 115, which states that:

"Development should only be prevented or refused on highways grounds if there would be an unacceptable impact on highway safety, or the residual cumulative impacts on the road network would be severe."

Appendix A

(TfL Bus Spider Map)

Buses from Hampstead Heath and Royal Free Hospital



How to use this map

- Find your destination on the map
- See the coloured lines on the map for the bus routes that go to your destination
- Check the map (at the end of each coloured line) for the bus stops to catch your bus from
- Use the central map to find the nearest bus stop for your route
- Look for the bus stop letters at the top of the stop (see example for stop A to the right)

Key

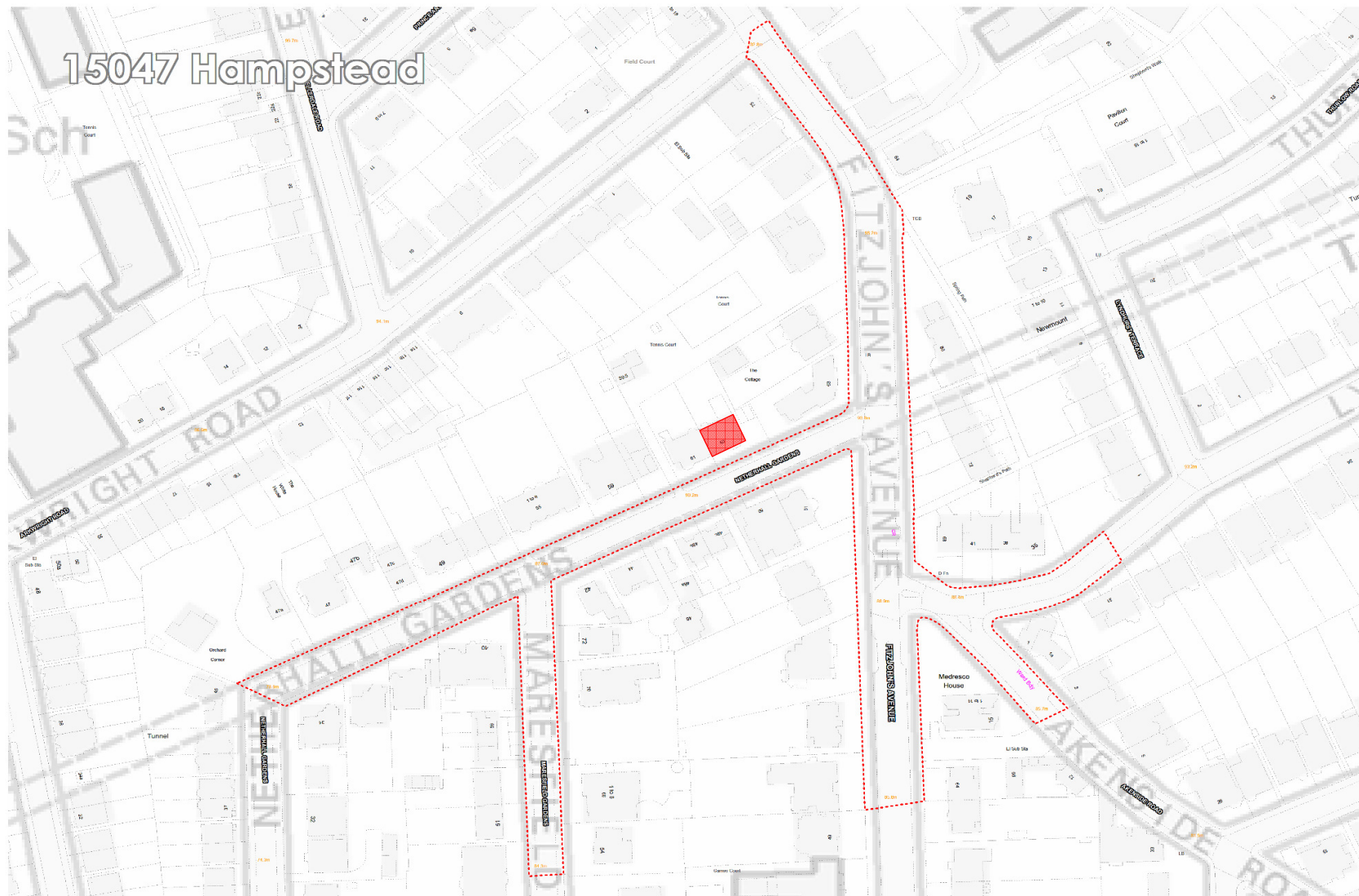
	Connections with London Underground
	Connections with London Overground
	Connections with Elizabeth line
	Connections with National Rail
	Connections with river boats
	Tube station with 24-hour service Friday and Saturday nights

Ways to pay

- Use contactless (card or device). It's the same fare as Oyster pay as you go and you don't need to top up
- Download the free TfL app to top up or buy a ticket anytime, anywhere, or visit tfl.gov.uk/oyster. Alternatively, find your nearest Oyster Ticket Stop at tfl.gov.uk/ticketstopfinder or visit your nearest TfL station
- The Hopper fare offers you unlimited pay as you go Bus and Tram journeys within one hour. Always use the same card or device to touch in
- If you fail to show on demand a ticket, validated smartcard or other travel authority valid for the whole of your journey you may be liable for a penalty fare or prosecuted.

Appendix B

(Parking Survey)



	Site / Location:	200m walking distance from 63 Netherall Gardens, NW3 5RE	Project No:	15047	Drawing No:	15047-01	Drawn By:	MB
	Survey Date:	Tue 6th and Wed 7th of February 2024	Project Name:	Hampstead				
	Survey Times:	once between 0030 and 0530	Drawing Title:	On-Street Parking Survey				

S	Street	Restriction	Len	Type	Cap	comment
1	Fitzjohn's Avenue	Dropped Kerb	6.6	horizontal	1	Keep Clear
2	Fitzjohn's Avenue	Dropped Kerb	3.4	horizontal	0	
3	Fitzjohn's Avenue	Double Yellow	5.1	horizontal	1	
4	Fitzjohn's Avenue	Dropped Kerb	5.3	horizontal	1	
5	Fitzjohn's Avenue	Double Yellow	18.5	horizontal	3	
6	Fitzjohn's Avenue	Dropped Kerb	6.7	horizontal	1	
7	Fitzjohn's Avenue	Double Yellow	11.6	horizontal	2	
8	Fitzjohn's Avenue	Dropped Kerb	11.4	horizontal	2	
9	Fitzjohn's Avenue	Double Yellow	7.7	horizontal	1	
10	Fitzjohn's Avenue	Dropped Kerb	5.6	horizontal	1	
11	Fitzjohn's Avenue	Double Yellow	1.3	horizontal	0	
12	Fitzjohn's Avenue	Bus Stop	16.6	horizontal	3	
13	Fitzjohn's Avenue	Pay By Phone	56.5	horizontal	11	
14	Fitzjohn's Avenue	Double Yellow	1.3	horizontal	0	
15	Fitzjohn's Avenue	Dropped Kerb	4.6	horizontal	0	
16	Fitzjohn's Avenue	Resident Bay	14.2	horizontal	2	
17	Fitzjohn's Avenue	Double Yellow	1.4	horizontal	0	
18	Fitzjohn's Avenue	Dropped Kerb	3.5	horizontal	0	
19	Fitzjohn's Avenue	Double Yellow	1.0	horizontal	0	
20	Fitzjohn's Avenue	Resident Bay	20.1	horizontal	4	
21	Fitzjohn's Avenue	Double Yellow	2.9	horizontal	0	
22	Fitzjohn's Avenue	Zig-Zag	6.6	horizontal	1	
23	Fitzjohn's Avenue	Dropped Kerb	6.8	horizontal	1	
24	Fitzjohn's Avenue	Zig-Zag	4.7	horizontal	0	
25	Fitzjohn's Avenue	Dropped Kerb	3.5	horizontal	0	Pedestrian Crossing
26	Fitzjohn's Avenue	Zig-Zag	1.5	horizontal	0	
27	Lyndhurst Road	Double Yellow	5.0	horizontal	1	
28	Lyndhurst Road	Dropped Kerb	3.8	horizontal	0	Pedestrian Crossing
29	Lyndhurst Road	Double Yellow	22.4	horizontal	4	
30	Lyndhurst Road	Dropped Kerb	3.2	horizontal	0	
31	Lyndhurst Road	Double Yellow	11.8	horizontal	2	
32	Lyndhurst Road	Dropped Kerb	3.3	horizontal	0	
33	Lyndhurst Road	Double Yellow	17.9	horizontal	3	
34	Lyndhurst Road	Dropped Kerb	3.9	horizontal	0	
35	Lyndhurst Road	Double Yellow	8.9	horizontal	1	
36	Lyndhurst Road	Dropped Kerb	3.9	horizontal	0	
37	Lyndhurst Road	Double Yellow	5.5	horizontal	1	
38	Lyndhurst Road	Resident Bay	13.7	horizontal	2	
39	Lyndhurst Road	Double Yellow	1.1	horizontal	0	
40	Lyndhurst Road	Dropped Kerb	5.4	horizontal	1	
41	Lyndhurst Road	Double Yellow	1.0	horizontal	0	
42	Lyndhurst Road	Resident Bay	19.6	horizontal	3	
43	Lyndhurst Road	Double Yellow	14.0	horizontal	2	
44	Akenside Road	Double Yellow	2.9	horizontal	0	
45	Akenside Road	Dropped Kerb	3.4	horizontal	0	Pedestrian Crossing

S	Street	Restriction	Len	Type	Cap	comment
46	Akenside Road	Double Yellow	24.0	horizontal	4	
47	Akenside Road	Dropped Kerb	14.0	horizontal	2	
48	Akenside Road	Double Yellow	1.2	horizontal	0	
49	Akenside Road	Resident Bay	5.2	horizontal	1	
50	Akenside Road	Double Yellow	2.5	horizontal	0	
51	Akenside Road	Resident Bay	32.2	horizontal	6	
52	Akenside Road	Double Yellow	14.0	horizontal	2	
53	Akenside Road	Dropped Kerb	4.3	horizontal	0	Pedestrian Crossing
54	Akenside Road	Double Yellow	4.8	horizontal	0	
55	Lyndhurst Road	Double Yellow	7.4	horizontal	1	
56	Lyndhurst Road	Dropped Kerb	3.5	horizontal	0	Pedestrian Crossing
57	Lyndhurst Road	Double Yellow	5.0	horizontal	1	
58	Fitzjohn's Avenue	Double Yellow	4.4	horizontal	0	
59	Fitzjohn's Avenue	Resident Bay	16.1	horizontal	3	
60	Fitzjohn's Avenue	Single Yellow	5.1	horizontal	1	
61	Fitzjohn's Avenue	Bus Stop	19.1	horizontal	3	
62	Fitzjohn's Avenue	Single Yellow	2.3	horizontal	0	
63	Fitzjohn's Avenue	Dropped Kerb	5.0	horizontal	1	
64	Fitzjohn's Avenue	Single Yellow	4.3	horizontal	0	
65	Fitzjohn's Avenue	Dropped Kerb	6.7	horizontal	1	
66	Fitzjohn's Avenue	Single Yellow	1.1	horizontal	0	
67	Fitzjohn's Avenue	Resident Bay	9.0	horizontal	1	
68	Fitzjohn's Avenue	Single Yellow	3.3	horizontal	0	
69	Fitzjohn's Avenue	Dropped Kerb	3.8	horizontal	0	
70	Fitzjohn's Avenue	Single Yellow	1.4	horizontal	0	
71	Fitzjohn's Avenue	Resident Bay	9.9	horizontal	1	
72	Fitzjohn's Avenue	Single Yellow	1.8	horizontal	0	
73	Fitzjohn's Avenue	Dropped Kerb	8.1	horizontal	1	
74	Fitzjohn's Avenue	Single Yellow	1.2	horizontal	0	
75	Fitzjohn's Avenue	Resident Bay	9.9	horizontal	1	
76	Fitzjohn's Avenue	Single Yellow	5.0	horizontal	1	
77	Fitzjohn's Avenue	Dropped Kerb	8.4	horizontal	1	
78	Fitzjohn's Avenue	Single Yellow	4.8	horizontal	0	
79	Fitzjohn's Avenue	Resident Bay	12.2	horizontal	2	
80	Fitzjohn's Avenue	Car Club	5.0	horizontal	1	
81	Fitzjohn's Avenue	Resident Bay	4.9	horizontal	0	
82	Fitzjohn's Avenue	Double Yellow	2.1	horizontal	0	
83	Fitzjohn's Avenue	Dropped Kerb	3.5	horizontal	0	
84	Fitzjohn's Avenue	Zig-Zag	2.7	horizontal	0	DoubleYellow
85	Fitzjohn's Avenue	Zig-Zag	11.4	horizontal	2	
86	Fitzjohn's Avenue	Dropped Kerb	3.4	horizontal	0	Pedestrian Crossing
87	Fitzjohn's Avenue	Zig-Zag	4.9	horizontal	0	
88	Fitzjohn's Avenue	Dropped Kerb	10.9	horizontal	2	
89	Fitzjohn's Avenue	Zig-Zag	2.3	horizontal	0	
90	Fitzjohn's Avenue	Resident Bay	21.8	horizontal	4	

S	Street	Restriction	Len	Type	Cap	comment
91	Fitzjohn's Avenue	Double Yellow	5.0	horizontal	1	
92	Netherhall Gardens	Double Yellow	3.7	horizontal	0	
93	Netherhall Gardens	Dropped Kerb	1.8	horizontal	0	Pedestrian Crossing
94	Netherhall Gardens	Double Yellow	1.3	horizontal	0	
95	Netherhall Gardens	Single Yellow	5.4	horizontal	1	
96	Netherhall Gardens	Motorcycle Bay	4.0	motorcycle	6	
97	Netherhall Gardens	Resident Bay	24.7	horizontal	4	
98	Netherhall Gardens	Single Yellow	1.0	horizontal	0	
99	Netherhall Gardens	Dropped Kerb	3.6	horizontal	0	
100	Netherhall Gardens	Single Yellow	2.6	horizontal	0	
101	Netherhall Gardens	Resident Bay	14.2	horizontal	2	
102	Netherhall Gardens	Single Yellow	1.7	horizontal	0	
103	Netherhall Gardens	Dropped Kerb	3.3	horizontal	0	
104	Netherhall Gardens	Resident Bay	10.1	horizontal	2	
105	Netherhall Gardens	Single Yellow	2.1	horizontal	0	
106	Netherhall Gardens	Dropped Kerb	2.9	horizontal	0	
107	Netherhall Gardens	Single Yellow	1.5	horizontal	0	
108	Netherhall Gardens	Dropped Kerb	3.1	horizontal	0	
109	Netherhall Gardens	Single Yellow	2.0	horizontal	0	
110	Netherhall Gardens	Dropped Kerb	11.6	horizontal	2	
111	Netherhall Gardens	Single Yellow	7.0	horizontal	1	
112	Netherhall Gardens	Dropped Kerb	9.8	horizontal	1	
113	Netherhall Gardens	Resident Bay	10.9	horizontal	2	
114	Netherhall Gardens	Single Yellow	3.8	horizontal	0	
115	Maresfield Garden	Dropped Kerb	2.5	horizontal	0	Pedestrian Crossing
116	Maresfield Garden	Single Yellow	7.5	horizontal	1	
117	Maresfield Garden	Electric Vehicle Bay	5.4	horizontal	1	
118	Maresfield Garden	Resident Bay	11.7	horizontal	2	
119	Maresfield Garden	Single Yellow	1.5	horizontal	0	
120	Maresfield Garden	Dropped Kerb	4.6	horizontal	0	
121	Maresfield Garden	Single Yellow	2.2	horizontal	0	
122	Maresfield Garden	Dropped Kerb	3.3	horizontal	0	
123	Maresfield Garden	Single Yellow	1.1	horizontal	0	
124	Maresfield Garden	Resident Bay	54.2	horizontal	10	
125	Maresfield Garden	Single Yellow	1.4	horizontal	0	
126	Maresfield Garden	Dropped Kerb	3.7	horizontal	0	
127	Maresfield Garden	Single Yellow	1.7	horizontal	0	
128	Maresfield Garden	Dropped Kerb	3.4	horizontal	0	
129	Maresfield Garden	Single Yellow	1.3	horizontal	0	
130	Maresfield Garden	Resident Bay	14.0	horizontal	2	
131	Maresfield Garden	Dropped Kerb	11.7	horizontal	2	
132	Maresfield Garden	Single Yellow	1.2	horizontal	0	
133	Maresfield Garden	Resident Bay	12.1	horizontal	2	
134	Maresfield Garden	Dropped Kerb	7.9	horizontal	1	
135	Maresfield Garden	Single Yellow	11.0	horizontal	2	

S	Street	Restriction	Len	Type	Cap	comment
136	Maresfield Garden	Dropped Kerb	3.1	horizontal	0	
137	Maresfield Garden	Single Yellow	16.5	horizontal	3	
138	Maresfield Garden	Dropped Kerb	3.5	horizontal	0	
139	Maresfield Garden	Resident Bay	26.5	horizontal	5	
140	Maresfield Garden	Single Yellow	3.5	horizontal	0	
141	Maresfield Garden	Dropped Kerb	3.7	horizontal	0	
142	Maresfield Garden	Single Yellow	12.9	horizontal	2	
143	Maresfield Garden	Dropped Kerb	2.4	horizontal	0	Pedestrian Crossing
144	Netherhall Gardens	Single Yellow	6.1	horizontal	1	
145	Netherhall Gardens	Resident Bay	26.0	horizontal	5	
146	Netherhall Gardens	Single Yellow	1.9	horizontal	0	
147	Netherhall Gardens	Dropped Kerb	5.5	horizontal	1	
148	Netherhall Gardens	Single Yellow	6.4	horizontal	1	
149	Netherhall Gardens	Dropped Kerb	3.5	horizontal	0	
150	Netherhall Gardens	Single Yellow	0.9	horizontal	0	
151	Netherhall Gardens	Resident Bay	6.2	horizontal	1	
152	Netherhall Gardens	Single Yellow	2.7	horizontal	0	
153	Netherhall Gardens	Dropped Kerb	5.1	horizontal	1	
154	Netherhall Gardens	Single Yellow	3.3	horizontal	0	
155	Netherhall Gardens	Dropped Kerb	5.2	horizontal	1	
156	Netherhall Gardens	Single Yellow	1.1	horizontal	0	
157	Netherhall Gardens	Resident Bay	19.0	horizontal	3	
158	Netherhall Gardens	Single Yellow	8.4	horizontal	1	
159	Netherhall Gardens	Dropped Kerb	4.6	horizontal	0	
160	Netherhall Gardens	Single Yellow	4.3	horizontal	0	
161	Netherhall Gardens	Dropped Kerb	5.0	horizontal	1	
162	Netherhall Gardens	Single Yellow	7.9	horizontal	1	
163	Netherhall Gardens	Dropped Kerb	3.2	horizontal	0	
164	Netherhall Gardens	Resident Bay	11.0	horizontal	2	
165	Netherhall Gardens	Single Yellow	3.4	horizontal	0	
166	Netherhall Gardens	Dropped Kerb	3.6	horizontal	0	
167	Netherhall Gardens	Single Yellow	1.1	horizontal	0	
168	Netherhall Gardens	Resident Bay	16.2	horizontal	3	

S	Street	Restriction	Len	Type	Cap	comment
169	Netherhall Gardens	Single Yellow	1.1	horizontal	0	
170	Netherhall Gardens	Dropped Kerb	3.9	horizontal	0	
171	Netherhall Gardens	Single Yellow	0.9	horizontal	0	
172	Netherhall Gardens	Disabled Bay	5.1	horizontal	1	
173	Netherhall Gardens	Resident Bay	17.9	horizontal	3	
174	Netherhall Gardens	Single Yellow	2.4	horizontal	0	
175	Netherhall Gardens	Dropped Kerb	4.6	horizontal	0	
176	Netherhall Gardens	Single Yellow	4.3	horizontal	0	
177	Netherhall Gardens	Dropped Kerb	4.2	horizontal	0	
178	Netherhall Gardens	Single Yellow	5.5	horizontal	1	
179	Netherhall Gardens	Dropped Kerb	8.4	horizontal	1	
180	Netherhall Gardens	Single Yellow	2.3	horizontal	0	
181	Netherhall Gardens	Resident Bay	4.8	horizontal	0	
182	Netherhall Gardens	Single Yellow	2.8	horizontal	0	
183	Netherhall Gardens	Dropped Kerb	4.5	horizontal	0	
184	Netherhall Gardens	Resident Bay	30.2	horizontal	6	
185	Netherhall Gardens	Single Yellow	1.4	horizontal	0	
186	Netherhall Gardens	Dropped Kerb	4.3	horizontal	0	
187	Netherhall Gardens	Single Yellow	1.6	horizontal	0	
188	Netherhall Gardens	Resident Bay	5.2	horizontal	1	
189	Netherhall Gardens	Single Yellow	1.6	horizontal	0	
190	Netherhall Gardens	Dropped Kerb	3.0	horizontal	0	
191	Netherhall Gardens	Single Yellow	1.5	horizontal	0	
192	Netherhall Gardens	Resident Bay	7.5	horizontal	1	Fenced
193	Netherhall Gardens	Disabled Bay	6.9	horizontal	1	
194	Netherhall Gardens	Resident Bay	13.9	horizontal	2	
195	Netherhall Gardens	Single Yellow	1.2	horizontal	0	
196	Netherhall Gardens	Dropped Kerb	3.8	horizontal	0	
197	Netherhall Gardens	Single Yellow	1.1	horizontal	0	
198	Netherhall Gardens	Resident Bay	27.4	horizontal	5	
199	Netherhall Gardens	Single Yellow	2.1	horizontal	0	
200	Netherhall Gardens	Double Yellow	5.1	horizontal	1	
201	Netherhall Gardens	Dropped Kerb	1.7	horizontal	0	Pedestrian Crossing
202	Netherhall Gardens	Double Yellow	4.6	horizontal	0	
203	Fitzjohn's Avenue	Double Yellow	12.5	horizontal	2	
204	Fitzjohn's Avenue	Bus Stop	19.9	horizontal	3	
205	Fitzjohn's Avenue	Double Yellow	0.7	horizontal	0	
206	Fitzjohn's Avenue	Resident Bay	9.8	horizontal	1	
207	Fitzjohn's Avenue	Double Yellow	4.2	horizontal	0	
208	Fitzjohn's Avenue	Dropped Kerb	3.8	horizontal	0	
209	Fitzjohn's Avenue	Double Yellow	1.5	horizontal	0	
210	Fitzjohn's Avenue	Resident Bay	7.2	horizontal	1	
211	Fitzjohn's Avenue	Dropped Kerb	9.3	horizontal	1	
212	Fitzjohn's Avenue	Resident Bay	9.0	horizontal	1	
213	Fitzjohn's Avenue	Double Yellow	17.6	horizontal	3	

S	Street	Restriction	Len	Type	Cap	comment
214	Fitzjohn's Avenue	Dropped Kerb	5.8	horizontal	1	
215	Fitzjohn's Avenue	Double Yellow	15.0	horizontal	3	
216	Fitzjohn's Avenue	Dropped Kerb	5.8	horizontal	1	
217	Fitzjohn's Avenue	Double Yellow	27.3	horizontal	5	
218	Fitzjohn's Avenue	Dropped Kerb	3.4	horizontal	0	
219	Fitzjohn's Avenue	Double Yellow	1.1	horizontal	0	

date	time	ID	street	restriction	val	len	cap	stress
06/02/2024	00:30	1	Fitzjohn's Avenue	Dropped Kerb	0	6.6	1	0%
06/02/2024	00:30	2	Fitzjohn's Avenue	Dropped Kerb	0	3.4	0	0%
06/02/2024	00:30	3	Fitzjohn's Avenue	Double Yellow	0	5.1	1	0%
06/02/2024	00:30	4	Fitzjohn's Avenue	Dropped Kerb	0	5.3	1	0%
06/02/2024	00:30	5	Fitzjohn's Avenue	Double Yellow	0	18.5	3	0%
06/02/2024	00:30	5	Fitzjohn's Avenue	Double Yellow	0	0	0	0%
06/02/2024	00:30	5	Fitzjohn's Avenue	Double Yellow	0	0	0	0%
06/02/2024	00:30	6	Fitzjohn's Avenue	Dropped Kerb	0	6.7	1	0%
06/02/2024	00:30	7	Fitzjohn's Avenue	Double Yellow	0	11.6	2	0%
06/02/2024	00:30	7	Fitzjohn's Avenue	Double Yellow	0	0	0	0%
06/02/2024	00:30	8	Fitzjohn's Avenue	Dropped Kerb	0	11.4	2	0%
06/02/2024	00:30	8	Fitzjohn's Avenue	Dropped Kerb	0	0	0	0%
06/02/2024	00:30	9	Fitzjohn's Avenue	Double Yellow	0	7.7	1	0%
06/02/2024	00:30	10	Fitzjohn's Avenue	Dropped Kerb	0	5.6	1	0%
06/02/2024	00:30	11	Fitzjohn's Avenue	Double Yellow	0	1.3	0	0%
06/02/2024	00:30	12	Fitzjohn's Avenue	Bus Stop	0	16.6	3	0%
06/02/2024	00:30	12	Fitzjohn's Avenue	Bus Stop	0	0	0	0%
06/02/2024	00:30	12	Fitzjohn's Avenue	Bus Stop	0	0	0	0%
06/02/2024	00:30	13	Fitzjohn's Avenue	Pay By Phone	0	56.5	11	0%
06/02/2024	00:30	13	Fitzjohn's Avenue	Pay By Phone	0	0	0	0%
06/02/2024	00:30	13	Fitzjohn's Avenue	Pay By Phone	0	0	0	0%
06/02/2024	00:30	13	Fitzjohn's Avenue	Pay By Phone	0	0	0	0%
06/02/2024	00:30	13	Fitzjohn's Avenue	Pay By Phone	0	0	0	0%
06/02/2024	00:30	13	Fitzjohn's Avenue	Pay By Phone	0	0	0	0%
06/02/2024	00:30	13	Fitzjohn's Avenue	Pay By Phone	0	0	0	0%
06/02/2024	00:30	13	Fitzjohn's Avenue	Pay By Phone	0	0	0	0%
06/02/2024	00:30	13	Fitzjohn's Avenue	Pay By Phone	1	0	0	100%
06/02/2024	00:30	13	Fitzjohn's Avenue	Pay By Phone	1	0	0	100%
06/02/2024	00:30	13	Fitzjohn's Avenue	Pay By Phone	0	0	0	0%
06/02/2024	00:30	14	Fitzjohn's Avenue	Double Yellow	0	1.3	0	0%
06/02/2024	00:30	15	Fitzjohn's Avenue	Dropped Kerb	0	4.6	0	0%
06/02/2024	00:30	16	Fitzjohn's Avenue	Resident Bay	1	14.2	2	50%
06/02/2024	00:30	16	Fitzjohn's Avenue	Resident Bay	1	0	0	100%
06/02/2024	00:30	16	Fitzjohn's Avenue	Resident Bay	0	0	0	0%
06/02/2024	00:30	17	Fitzjohn's Avenue	Double Yellow	0	1.4	0	0%
06/02/2024	00:30	18	Fitzjohn's Avenue	Dropped Kerb	0	3.5	0	0%
06/02/2024	00:30	19	Fitzjohn's Avenue	Double Yellow	0	1	0	0%
06/02/2024	00:30	20	Fitzjohn's Avenue	Resident Bay	1	20.1	4	25%
06/02/2024	00:30	20	Fitzjohn's Avenue	Resident Bay	1	0	0	100%
06/02/2024	00:30	20	Fitzjohn's Avenue	Resident Bay	0	0	0	0%
06/02/2024	00:30	20	Fitzjohn's Avenue	Resident Bay	0	0	0	0%
06/02/2024	00:30	21	Fitzjohn's Avenue	Double Yellow	0	2.9	0	0%
06/02/2024	00:30	22	Fitzjohn's Avenue	Zig-Zag	0	6.6	1	0%
06/02/2024	00:30	23	Fitzjohn's Avenue	Dropped Kerb	0	6.8	1	0%
06/02/2024	00:30	24	Fitzjohn's Avenue	Zig-Zag	0	4.7	0	0%
06/02/2024	00:30	25	Fitzjohn's Avenue	Dropped Kerb	0	3.5	0	0%
06/02/2024	00:30	26	Fitzjohn's Avenue	Zig-Zag	0	1.5	0	0%
06/02/2024	00:30	27	Lyndhurst Road	Double Yellow	0	5	1	0%
06/02/2024	00:30	28	Lyndhurst Road	Dropped Kerb	0	3.8	0	0%
06/02/2024	00:30	29	Lyndhurst Road	Double Yellow	0	22.4	4	0%
06/02/2024	00:30	29	Lyndhurst Road	Double Yellow	0	0	0	0%
06/02/2024	00:30	29	Lyndhurst Road	Double Yellow	0	0	0	0%
06/02/2024	00:30	29	Lyndhurst Road	Double Yellow	0	0	0	0%
06/02/2024	00:30	30	Lyndhurst Road	Dropped Kerb	0	3.2	0	0%
06/02/2024	00:30	31	Lyndhurst Road	Double Yellow	0	11.8	2	0%
06/02/2024	00:30	31	Lyndhurst Road	Double Yellow	0	0	0	0%
06/02/2024	00:30	32	Lyndhurst Road	Dropped Kerb	0	3.3	0	0%
06/02/2024	00:30	33	Lyndhurst Road	Double Yellow	0	17.9	3	0%
06/02/2024	00:30	33	Lyndhurst Road	Double Yellow	0	0	0	0%
06/02/2024	00:30	33	Lyndhurst Road	Double Yellow	0	0	0	0%
06/02/2024	00:30	34	Lyndhurst Road	Dropped Kerb	0	3.9	0	0%

06/02/2024 00:30	35	Lyndhurst Road	Double Yellow	0	8.9	1	0%
06/02/2024 00:30	35	Lyndhurst Road	Double Yellow	0	0	0	0%
06/02/2024 00:30	36	Lyndhurst Road	Dropped Kerb	0	3.9	0	0%
06/02/2024 00:30	37	Lyndhurst Road	Double Yellow	0	5.5	1	0%
06/02/2024 00:30	38	Lyndhurst Road	Resident Bay	1	13.7	2	50%
06/02/2024 00:30	38	Lyndhurst Road	Resident Bay	1	0	0	100%
06/02/2024 00:30	38	Lyndhurst Road	Resident Bay	0	0	0	0%
06/02/2024 00:30	39	Lyndhurst Road	Double Yellow	0	1.1	0	0%
06/02/2024 00:30	40	Lyndhurst Road	Dropped Kerb	0	5.4	1	0%
06/02/2024 00:30	41	Lyndhurst Road	Double Yellow	0	1	0	0%
06/02/2024 00:30	42	Lyndhurst Road	Resident Bay	0	19.6	3	0%
06/02/2024 00:30	42	Lyndhurst Road	Resident Bay	0	0	0	0%
06/02/2024 00:30	42	Lyndhurst Road	Resident Bay	0	0	0	0%
06/02/2024 00:30	42	Lyndhurst Road	Resident Bay	0	0	0	0%
06/02/2024 00:30	43	Lyndhurst Road	Double Yellow	0	14	2	0%
06/02/2024 00:30	44	Akenside Road	Double Yellow	0	2.9	0	0%
06/02/2024 00:30	45	Akenside Road	Dropped Kerb	0	3.4	0	0%
06/02/2024 00:30	46	Akenside Road	Double Yellow	0	24	4	0%
06/02/2024 00:30	46	Akenside Road	Double Yellow	0	0	0	0%
06/02/2024 00:30	46	Akenside Road	Double Yellow	0	0	0	0%
06/02/2024 00:30	46	Akenside Road	Double Yellow	0	0	0	0%
06/02/2024 00:30	46	Akenside Road	Double Yellow	0	0	0	0%
06/02/2024 00:30	47	Akenside Road	Dropped Kerb	0	14	2	0%
06/02/2024 00:30	47	Akenside Road	Dropped Kerb	0	0	0	0%
06/02/2024 00:30	47	Akenside Road	Dropped Kerb	0	0	0	0%
06/02/2024 00:30	48	Akenside Road	Double Yellow	0	1.2	0	0%
06/02/2024 00:30	49	Akenside Road	Resident Bay	1	5.2	1	100%
06/02/2024 00:30	50	Akenside Road	Double Yellow	0	2.5	0	0%
06/02/2024 00:30	51	Akenside Road	Resident Bay	0	32.2	6	0%
06/02/2024 00:30	51	Akenside Road	Resident Bay	0	0	0	0%
06/02/2024 00:30	51	Akenside Road	Resident Bay	0	0	0	0%
06/02/2024 00:30	51	Akenside Road	Resident Bay	0	0	0	0%
06/02/2024 00:30	51	Akenside Road	Resident Bay	0	0	0	0%
06/02/2024 00:30	51	Akenside Road	Resident Bay	1	0	0	100%
06/02/2024 00:30	52	Akenside Road	Double Yellow	0	14	2	0%
06/02/2024 00:30	52	Akenside Road	Double Yellow	0	0	0	0%
06/02/2024 00:30	52	Akenside Road	Double Yellow	0	0	0	0%
06/02/2024 00:30	53	Akenside Road	Dropped Kerb	0	4.3	0	0%
06/02/2024 00:30	54	Akenside Road	Double Yellow	0	4.8	0	0%
06/02/2024 00:30	55	Lyndhurst Road	Double Yellow	0	7.4	1	0%
06/02/2024 00:30	56	Lyndhurst Road	Dropped Kerb	0	3.5	0	0%
06/02/2024 00:30	57	Lyndhurst Road	Double Yellow	0	5	1	0%
06/02/2024 00:30	58	Fitzjohn's Avenue	Double Yellow	0	4.4	0	0%
06/02/2024 00:30	59	Fitzjohn's Avenue	Resident Bay	1	16.1	3	33%
06/02/2024 00:30	59	Fitzjohn's Avenue	Resident Bay	0	0	0	0%
06/02/2024 00:30	59	Fitzjohn's Avenue	Resident Bay	0	0	0	0%
06/02/2024 00:30	60	Fitzjohn's Avenue	Single Yellow	0	5.1	1	0%
06/02/2024 00:30	61	Fitzjohn's Avenue	Bus Stop	0	19.1	3	0%
06/02/2024 00:30	61	Fitzjohn's Avenue	Bus Stop	0	0	0	0%
06/02/2024 00:30	61	Fitzjohn's Avenue	Bus Stop	0	0	0	0%
06/02/2024 00:30	61	Fitzjohn's Avenue	Bus Stop	0	0	0	0%
06/02/2024 00:30	62	Fitzjohn's Avenue	Single Yellow	0	2.3	0	0%
06/02/2024 00:30	63	Fitzjohn's Avenue	Dropped Kerb	0	5	1	0%
06/02/2024 00:30	64	Fitzjohn's Avenue	Single Yellow	0	4.3	0	0%
06/02/2024 00:30	65	Fitzjohn's Avenue	Dropped Kerb	0	6.7	1	0%
06/02/2024 00:30	66	Fitzjohn's Avenue	Single Yellow	0	1.1	0	0%
06/02/2024 00:30	67	Fitzjohn's Avenue	Resident Bay	1	9	1	100%
06/02/2024 00:30	67	Fitzjohn's Avenue	Resident Bay	1	0	0	100%
06/02/2024 00:30	68	Fitzjohn's Avenue	Single Yellow	0	3.3	0	0%
06/02/2024 00:30	69	Fitzjohn's Avenue	Dropped Kerb	0	3.8	0	0%
06/02/2024 00:30	70	Fitzjohn's Avenue	Single Yellow	0	1.4	0	0%
06/02/2024 00:30	71	Fitzjohn's Avenue	Resident Bay	1	9.9	1	100%

06/02/2024 00:30	71	Fitzjohn's Avenue	Resident Bay	1	0	0	<div><div></div></div>	100%
06/02/2024 00:30	72	Fitzjohn's Avenue	Single Yellow	0	1.8	0	<div><div></div></div>	0%
06/02/2024 00:30	73	Fitzjohn's Avenue	Dropped Kerb	0	8.1	1	<div><div></div></div>	0%
06/02/2024 00:30	74	Fitzjohn's Avenue	Single Yellow	0	1.2	0	<div><div></div></div>	0%
06/02/2024 00:30	75	Fitzjohn's Avenue	Resident Bay	1	9.9	1	<div><div></div></div>	100%
06/02/2024 00:30	75	Fitzjohn's Avenue	Resident Bay	0	0	0	<div><div></div></div>	0%
06/02/2024 00:30	76	Fitzjohn's Avenue	Single Yellow	0	5	1	<div><div></div></div>	0%
06/02/2024 00:30	77	Fitzjohn's Avenue	Dropped Kerb	0	8.4	1	<div><div></div></div>	0%
06/02/2024 00:30	78	Fitzjohn's Avenue	Single Yellow	0	4.8	0	<div><div></div></div>	0%
06/02/2024 00:30	79	Fitzjohn's Avenue	Resident Bay	1	12.2	2	<div><div></div></div>	50%
06/02/2024 00:30	79	Fitzjohn's Avenue	Resident Bay	1	0	0	<div><div></div></div>	100%
06/02/2024 00:30	80	Fitzjohn's Avenue	Car Club	0	5	1	<div><div></div></div>	0%
06/02/2024 00:30	81	Fitzjohn's Avenue	Resident Bay	1	4.9	0	<div><div></div></div>	100%
06/02/2024 00:30	82	Fitzjohn's Avenue	Double Yellow	0	2.1	0	<div><div></div></div>	0%
06/02/2024 00:30	83	Fitzjohn's Avenue	Dropped Kerb	0	3.5	0	<div><div></div></div>	0%
06/02/2024 00:30	84	Fitzjohn's Avenue	Zig-Zag	0	2.7	0	<div><div></div></div>	0%
06/02/2024 00:30	85	Fitzjohn's Avenue	Zig-Zag	0	11.4	2	<div><div></div></div>	0%
06/02/2024 00:30	85	Fitzjohn's Avenue	Zig-Zag	0	0	0	<div><div></div></div>	0%
06/02/2024 00:30	86	Fitzjohn's Avenue	Dropped Kerb	0	3.4	0	<div><div></div></div>	0%
06/02/2024 00:30	87	Fitzjohn's Avenue	Zig-Zag	0	4.9	0	<div><div></div></div>	0%
06/02/2024 00:30	88	Fitzjohn's Avenue	Dropped Kerb	0	10.9	2	<div><div></div></div>	0%
06/02/2024 00:30	88	Fitzjohn's Avenue	Dropped Kerb	0	0	0	<div><div></div></div>	0%
06/02/2024 00:30	89	Fitzjohn's Avenue	Zig-Zag	0	2.3	0	<div><div></div></div>	0%
06/02/2024 00:30	90	Fitzjohn's Avenue	Resident Bay	1	21.8	4	<div><div></div></div>	25%
06/02/2024 00:30	90	Fitzjohn's Avenue	Resident Bay	0	0	0	<div><div></div></div>	0%
06/02/2024 00:30	90	Fitzjohn's Avenue	Resident Bay	1	0	0	<div><div></div></div>	100%
06/02/2024 00:30	90	Fitzjohn's Avenue	Resident Bay	1	0	0	<div><div></div></div>	100%
06/02/2024 00:30	91	Fitzjohn's Avenue	Double Yellow	0	5	1	<div><div></div></div>	0%
06/02/2024 00:30	92	Netherhall Gardens	Double Yellow	0	3.7	0	<div><div></div></div>	0%
06/02/2024 00:30	93	Netherhall Gardens	Dropped Kerb	0	1.8	0	<div><div></div></div>	0%
06/02/2024 00:30	94	Netherhall Gardens	Double Yellow	0	1.3	0	<div><div></div></div>	0%
06/02/2024 00:30	95	Netherhall Gardens	Single Yellow	0	5.4	1	<div><div></div></div>	0%
06/02/2024 00:30	96	Netherhall Gardens	Motorcycle Bay	1	4	6	<div><div></div></div>	17%
06/02/2024 00:30	96	Netherhall Gardens	Motorcycle Bay	1	0	0	<div><div></div></div>	100%
06/02/2024 00:30	96	Netherhall Gardens	Motorcycle Bay	0	0	0	<div><div></div></div>	0%
06/02/2024 00:30	96	Netherhall Gardens	Motorcycle Bay	0	0	0	<div><div></div></div>	0%
06/02/2024 00:30	97	Netherhall Gardens	Resident Bay	1	24.7	4	<div><div></div></div>	25%
06/02/2024 00:30	97	Netherhall Gardens	Resident Bay	1	0	0	<div><div></div></div>	100%
06/02/2024 00:30	97	Netherhall Gardens	Resident Bay	1	0	0	<div><div></div></div>	100%
06/02/2024 00:30	97	Netherhall Gardens	Resident Bay	1	0	0	<div><div></div></div>	100%
06/02/2024 00:30	97	Netherhall Gardens	Resident Bay	0	0	0	<div><div></div></div>	0%
06/02/2024 00:30	98	Netherhall Gardens	Single Yellow	0	1	0	<div><div></div></div>	0%
06/02/2024 00:30	99	Netherhall Gardens	Dropped Kerb	0	3.6	0	<div><div></div></div>	0%
06/02/2024 00:30	100	Netherhall Gardens	Single Yellow	0	2.6	0	<div><div></div></div>	0%
06/02/2024 00:30	101	Netherhall Gardens	Resident Bay	1	14.2	2	<div><div></div></div>	50%
06/02/2024 00:30	101	Netherhall Gardens	Resident Bay	1	0	0	<div><div></div></div>	100%
06/02/2024 00:30	101	Netherhall Gardens	Resident Bay	0	0	0	<div><div></div></div>	0%
06/02/2024 00:30	102	Netherhall Gardens	Single Yellow	0	1.7	0	<div><div></div></div>	0%
06/02/2024 00:30	103	Netherhall Gardens	Dropped Kerb	0	3.3	0	<div><div></div></div>	0%
06/02/2024 00:30	104	Netherhall Gardens	Resident Bay	1	10.1	2	<div><div></div></div>	50%
06/02/2024 00:30	104	Netherhall Gardens	Resident Bay	1	0	0	<div><div></div></div>	100%
06/02/2024 00:30	105	Netherhall Gardens	Single Yellow	0	2.1	0	<div><div></div></div>	0%
06/02/2024 00:30	106	Netherhall Gardens	Dropped Kerb	0	2.9	0	<div><div></div></div>	0%
06/02/2024 00:30	107	Netherhall Gardens	Single Yellow	0	1.5	0	<div><div></div></div>	0%
06/02/2024 00:30	108	Netherhall Gardens	Dropped Kerb	0	3.1	0	<div><div></div></div>	0%
06/02/2024 00:30	109	Netherhall Gardens	Single Yellow	0	2	0	<div><div></div></div>	0%
06/02/2024 00:30	110	Netherhall Gardens	Dropped Kerb	0	11.6	2	<div><div></div></div>	0%
06/02/2024 00:30	110	Netherhall Gardens	Dropped Kerb	0	0	0	<div><div></div></div>	0%
06/02/2024 00:30	111	Netherhall Gardens	Single Yellow	0	7	1	<div><div></div></div>	0%
06/02/2024 00:30	112	Netherhall Gardens	Dropped Kerb	0	9.8	1	<div><div></div></div>	0%
06/02/2024 00:30	112	Netherhall Gardens	Dropped Kerb	0	0	0	<div><div></div></div>	0%
06/02/2024 00:30	113	Netherhall Gardens	Resident Bay	1	10.9	2	<div><div></div></div>	50%

06/02/2024 00:30	113	Netherhall Gardens	Resident Bay	1	0	0	<div><div></div></div> 100%
06/02/2024 00:30	114	Netherhall Gardens	Single Yellow	0	3.8	0	0%
06/02/2024 00:30	115	Maresfield Garden	Dropped Kerb	0	2.5	0	0%
06/02/2024 00:30	116	Maresfield Garden	Single Yellow	0	7.5	1	0%
06/02/2024 00:30	117	Maresfield Garden	Electric Vehicle Bay	0	5.4	1	0%
06/02/2024 00:30	118	Maresfield Garden	Resident Bay	0	11.7	2	0%
06/02/2024 00:30	118	Maresfield Garden	Resident Bay	1	0	0	<div><div></div></div> 100%
06/02/2024 00:30	119	Maresfield Garden	Single Yellow	0	1.5	0	0%
06/02/2024 00:30	120	Maresfield Garden	Dropped Kerb	0	4.6	0	0%
06/02/2024 00:30	121	Maresfield Garden	Single Yellow	0	2.2	0	0%
06/02/2024 00:30	122	Maresfield Garden	Dropped Kerb	0	3.3	0	0%
06/02/2024 00:30	123	Maresfield Garden	Single Yellow	0	1.1	0	0%
06/02/2024 00:30	124	Maresfield Garden	Resident Bay	1	54.2	10	<div><div></div></div> 10%
06/02/2024 00:30	124	Maresfield Garden	Resident Bay	1	0	0	<div><div></div></div> 100%
06/02/2024 00:30	124	Maresfield Garden	Resident Bay	1	0	0	<div><div></div></div> 100%
06/02/2024 00:30	124	Maresfield Garden	Resident Bay	0	0	0	0%
06/02/2024 00:30	124	Maresfield Garden	Resident Bay	0	0	0	0%
06/02/2024 00:30	124	Maresfield Garden	Resident Bay	0	0	0	0%
06/02/2024 00:30	124	Maresfield Garden	Resident Bay	0	0	0	0%
06/02/2024 00:30	124	Maresfield Garden	Resident Bay	0	0	0	0%
06/02/2024 00:30	124	Maresfield Garden	Resident Bay	1	0	0	<div><div></div></div> 100%
06/02/2024 00:30	124	Maresfield Garden	Resident Bay	1	0	0	<div><div></div></div> 100%
06/02/2024 00:30	124	Maresfield Garden	Resident Bay	1	0	0	<div><div></div></div> 100%
06/02/2024 00:30	125	Maresfield Garden	Single Yellow	0	1.4	0	0%
06/02/2024 00:30	126	Maresfield Garden	Dropped Kerb	0	3.7	0	0%
06/02/2024 00:30	127	Maresfield Garden	Single Yellow	0	1.7	0	0%
06/02/2024 00:30	128	Maresfield Garden	Dropped Kerb	0	3.4	0	0%
06/02/2024 00:30	129	Maresfield Garden	Single Yellow	0	1.3	0	0%
06/02/2024 00:30	130	Maresfield Garden	Resident Bay	1	14	2	<div><div></div></div> 50%
06/02/2024 00:30	130	Maresfield Garden	Resident Bay	1	0	0	<div><div></div></div> 100%
06/02/2024 00:30	130	Maresfield Garden	Resident Bay	1	0	0	<div><div></div></div> 100%
06/02/2024 00:30	131	Maresfield Garden	Dropped Kerb	0	11.7	2	0%
06/02/2024 00:30	131	Maresfield Garden	Dropped Kerb	0	0	0	0%
06/02/2024 00:30	132	Maresfield Garden	Single Yellow	0	1.2	0	0%
06/02/2024 00:30	133	Maresfield Garden	Resident Bay	1	12.1	2	<div><div></div></div> 50%
06/02/2024 00:30	133	Maresfield Garden	Resident Bay	1	0	0	<div><div></div></div> 100%
06/02/2024 00:30	134	Maresfield Garden	Dropped Kerb	0	7.9	1	0%
06/02/2024 00:30	135	Maresfield Garden	Single Yellow	0	11	2	0%
06/02/2024 00:30	135	Maresfield Garden	Single Yellow	0	0	0	0%
06/02/2024 00:30	136	Maresfield Garden	Dropped Kerb	0	3.1	0	0%
06/02/2024 00:30	137	Maresfield Garden	Single Yellow	0	16.5	3	0%
06/02/2024 00:30	137	Maresfield Garden	Single Yellow	0	0	0	0%
06/02/2024 00:30	137	Maresfield Garden	Single Yellow	0	0	0	0%
06/02/2024 00:30	138	Maresfield Garden	Dropped Kerb	0	3.5	0	0%
06/02/2024 00:30	139	Maresfield Garden	Resident Bay	0	26.5	5	0%
06/02/2024 00:30	139	Maresfield Garden	Resident Bay	0	0	0	0%
06/02/2024 00:30	139	Maresfield Garden	Resident Bay	0	0	0	0%
06/02/2024 00:30	139	Maresfield Garden	Resident Bay	1	0	0	<div><div></div></div> 100%
06/02/2024 00:30	139	Maresfield Garden	Resident Bay	1	0	0	<div><div></div></div> 100%
06/02/2024 00:30	140	Maresfield Garden	Single Yellow	0	3.5	0	0%
06/02/2024 00:30	141	Maresfield Garden	Dropped Kerb	0	3.7	0	0%
06/02/2024 00:30	142	Maresfield Garden	Single Yellow	0	12.9	2	0%
06/02/2024 00:30	142	Maresfield Garden	Single Yellow	0	0	0	0%
06/02/2024 00:30	143	Maresfield Garden	Dropped Kerb	0	2.4	0	0%
06/02/2024 00:30	144	Netherhall Gardens	Single Yellow	0	6.1	1	0%
06/02/2024 00:30	145	Netherhall Gardens	Resident Bay	0	26	5	0%
06/02/2024 00:30	145	Netherhall Gardens	Resident Bay	1	0	0	<div><div></div></div> 100%
06/02/2024 00:30	145	Netherhall Gardens	Resident Bay	1	0	0	<div><div></div></div> 100%
06/02/2024 00:30	145	Netherhall Gardens	Resident Bay	1	0	0	<div><div></div></div> 100%
06/02/2024 00:30	145	Netherhall Gardens	Resident Bay	0	0	0	0%
06/02/2024 00:30	146	Netherhall Gardens	Single Yellow	0	1.9	0	0%
06/02/2024 00:30	147	Netherhall Gardens	Dropped Kerb	0	5.5	1	0%

06/02/2024 00:30	148	Netherhall Gardens	Single Yellow	0	6.4	1	0%
06/02/2024 00:30	149	Netherhall Gardens	Dropped Kerb	0	3.5	0	0%
06/02/2024 00:30	150	Netherhall Gardens	Single Yellow	0	0.9	0	0%
06/02/2024 00:30	151	Netherhall Gardens	Resident Bay	1	6.2	1	100%
06/02/2024 00:30	152	Netherhall Gardens	Single Yellow	0	2.7	0	0%
06/02/2024 00:30	153	Netherhall Gardens	Dropped Kerb	0	5.1	1	0%
06/02/2024 00:30	154	Netherhall Gardens	Single Yellow	0	3.3	0	0%
06/02/2024 00:30	155	Netherhall Gardens	Dropped Kerb	0	5.2	1	0%
06/02/2024 00:30	156	Netherhall Gardens	Single Yellow	0	1.1	0	0%
06/02/2024 00:30	157	Netherhall Gardens	Resident Bay	1	19	3	33%
06/02/2024 00:30	157	Netherhall Gardens	Resident Bay	1	0	0	100%
06/02/2024 00:30	157	Netherhall Gardens	Resident Bay	1	0	0	100%
06/02/2024 00:30	157	Netherhall Gardens	Resident Bay	0	0	0	0%
06/02/2024 00:30	158	Netherhall Gardens	Single Yellow	0	8.4	1	0%
06/02/2024 00:30	159	Netherhall Gardens	Dropped Kerb	0	4.6	0	0%
06/02/2024 00:30	160	Netherhall Gardens	Single Yellow	0	4.3	0	0%
06/02/2024 00:30	161	Netherhall Gardens	Dropped Kerb	0	5	1	0%
06/02/2024 00:30	162	Netherhall Gardens	Single Yellow	0	7.9	1	0%
06/02/2024 00:30	163	Netherhall Gardens	Dropped Kerb	0	3.2	0	0%
06/02/2024 00:30	163	Netherhall Gardens	Dropped Kerb	0	0	0	0%
06/02/2024 00:30	164	Netherhall Gardens	Resident Bay	1	11	2	50%
06/02/2024 00:30	164	Netherhall Gardens	Resident Bay	1	0	0	100%
06/02/2024 00:30	165	Netherhall Gardens	Single Yellow	0	3.4	0	0%
06/02/2024 00:30	166	Netherhall Gardens	Dropped Kerb	0	3.6	0	0%
06/02/2024 00:30	167	Netherhall Gardens	Single Yellow	0	1.1	0	0%
06/02/2024 00:30	168	Netherhall Gardens	Resident Bay	0	16.2	3	0%
06/02/2024 00:30	168	Netherhall Gardens	Resident Bay	0	0	0	0%
06/02/2024 00:30	168	Netherhall Gardens	Resident Bay	1	0	0	100%
06/02/2024 00:30	169	Netherhall Gardens	Single Yellow	0	1.1	0	0%
06/02/2024 00:30	170	Netherhall Gardens	Dropped Kerb	0	3.9	0	0%
06/02/2024 00:30	171	Netherhall Gardens	Single Yellow	0	0.9	0	0%
06/02/2024 00:30	172	Netherhall Gardens	Disabled Bay	0	5.1	1	0%
06/02/2024 00:30	173	Netherhall Gardens	Resident Bay	1	17.9	3	33%
06/02/2024 00:30	173	Netherhall Gardens	Resident Bay	0	0	0	0%
06/02/2024 00:30	173	Netherhall Gardens	Resident Bay	0	0	0	0%
06/02/2024 00:30	173	Netherhall Gardens	Resident Bay	1	0	0	100%
06/02/2024 00:30	174	Netherhall Gardens	Single Yellow	0	2.4	0	0%
06/02/2024 00:30	175	Netherhall Gardens	Dropped Kerb	0	4.6	0	0%
06/02/2024 00:30	176	Netherhall Gardens	Single Yellow	0	4.3	0	0%
06/02/2024 00:30	177	Netherhall Gardens	Dropped Kerb	0	4.2	0	0%
06/02/2024 00:30	178	Netherhall Gardens	Single Yellow	0	5.5	1	0%
06/02/2024 00:30	179	Netherhall Gardens	Dropped Kerb	0	8.4	1	0%
06/02/2024 00:30	180	Netherhall Gardens	Single Yellow	0	2.3	0	0%
06/02/2024 00:30	181	Netherhall Gardens	Resident Bay	0	4.8	0	0%
06/02/2024 00:30	182	Netherhall Gardens	Single Yellow	0	2.8	0	0%
06/02/2024 00:30	183	Netherhall Gardens	Dropped Kerb	0	4.5	0	0%
06/02/2024 00:30	184	Netherhall Gardens	Resident Bay	1	30.2	6	17%
06/02/2024 00:30	184	Netherhall Gardens	Resident Bay	0	0	0	0%
06/02/2024 00:30	184	Netherhall Gardens	Resident Bay	1	0	0	100%
06/02/2024 00:30	184	Netherhall Gardens	Resident Bay	1	0	0	100%
06/02/2024 00:30	184	Netherhall Gardens	Resident Bay	1	0	0	100%
06/02/2024 00:30	185	Netherhall Gardens	Single Yellow	0	1.4	0	0%
06/02/2024 00:30	186	Netherhall Gardens	Dropped Kerb	0	4.3	0	0%
06/02/2024 00:30	187	Netherhall Gardens	Single Yellow	0	1.6	0	0%
06/02/2024 00:30	188	Netherhall Gardens	Resident Bay	0	5.2	1	0%
06/02/2024 00:30	189	Netherhall Gardens	Single Yellow	0	1.6	0	0%
06/02/2024 00:30	190	Netherhall Gardens	Dropped Kerb	0	3	0	0%
06/02/2024 00:30	191	Netherhall Gardens	Single Yellow	0	1.5	0	0%
06/02/2024 00:30	192	Netherhall Gardens	Resident Bay	0	7.5	1	0%
06/02/2024 00:30	193	Netherhall Gardens	Disabled Bay	1	6.9	1	100%
06/02/2024 00:30	194	Netherhall Gardens	Resident Bay	1	13.9	2	50%

06/02/2024 00:30	194	Netherhall Gardens	Resident Bay	1	0	0	<div><div></div></div> 100%
06/02/2024 00:30	194	Netherhall Gardens	Resident Bay	0	0	0	0%
06/02/2024 00:30	195	Netherhall Gardens	Single Yellow	0	1.2	0	0%
06/02/2024 00:30	196	Netherhall Gardens	Dropped Kerb	0	3.8	0	0%
06/02/2024 00:30	197	Netherhall Gardens	Single Yellow	0	1.1	0	0%
06/02/2024 00:30	198	Netherhall Gardens	Resident Bay	1	27.4	5	<div><div></div></div> 20%
06/02/2024 00:30	198	Netherhall Gardens	Resident Bay	0	0	0	0%
06/02/2024 00:30	198	Netherhall Gardens	Resident Bay	1	0	0	<div><div></div></div> 100%
06/02/2024 00:30	198	Netherhall Gardens	Resident Bay	1	0	0	<div><div></div></div> 100%
06/02/2024 00:30	198	Netherhall Gardens	Resident Bay	1	0	0	<div><div></div></div> 100%
06/02/2024 00:30	198	Netherhall Gardens	Resident Bay	0	0	0	0%
06/02/2024 00:30	199	Netherhall Gardens	Single Yellow	0	2.1	0	0%
06/02/2024 00:30	200	Netherhall Gardens	Double Yellow	0	5.1	1	0%
06/02/2024 00:30	201	Netherhall Gardens	Dropped Kerb	0	1.7	0	0%
06/02/2024 00:30	202	Netherhall Gardens	Double Yellow	0	4.6	0	0%
06/02/2024 00:30	203	Fitzjohn's Avenue	Double Yellow	0	12.5	2	0%
06/02/2024 00:30	203	Fitzjohn's Avenue	Double Yellow	0	0	0	0%
06/02/2024 00:30	204	Fitzjohn's Avenue	Bus Stop	0	19.9	3	0%
06/02/2024 00:30	204	Fitzjohn's Avenue	Bus Stop	0	0	0	0%
06/02/2024 00:30	204	Fitzjohn's Avenue	Bus Stop	0	0	0	0%
06/02/2024 00:30	204	Fitzjohn's Avenue	Bus Stop	0	0	0	0%
06/02/2024 00:30	205	Fitzjohn's Avenue	Double Yellow	0	0.7	0	0%
06/02/2024 00:30	206	Fitzjohn's Avenue	Resident Bay	1	9.8	1	<div><div></div></div> 100%
06/02/2024 00:30	206	Fitzjohn's Avenue	Resident Bay	1	0	0	<div><div></div></div> 100%
06/02/2024 00:30	207	Fitzjohn's Avenue	Double Yellow	0	4.2	0	0%
06/02/2024 00:30	208	Fitzjohn's Avenue	Dropped Kerb	0	3.8	0	0%
06/02/2024 00:30	209	Fitzjohn's Avenue	Double Yellow	0	1.5	0	0%
06/02/2024 00:30	210	Fitzjohn's Avenue	Resident Bay	1	7.2	1	<div><div></div></div> 100%
06/02/2024 00:30	211	Fitzjohn's Avenue	Dropped Kerb	0	9.3	1	0%
06/02/2024 00:30	211	Fitzjohn's Avenue	Dropped Kerb	0	0	0	0%
06/02/2024 00:30	212	Fitzjohn's Avenue	Resident Bay	1	9	1	<div><div></div></div> 100%
06/02/2024 00:30	212	Fitzjohn's Avenue	Resident Bay	1	0	0	<div><div></div></div> 100%
06/02/2024 00:30	213	Fitzjohn's Avenue	Double Yellow	0	17.6	3	0%
06/02/2024 00:30	213	Fitzjohn's Avenue	Double Yellow	0	0	0	0%
06/02/2024 00:30	213	Fitzjohn's Avenue	Double Yellow	0	0	0	0%
06/02/2024 00:30	213	Fitzjohn's Avenue	Double Yellow	0	0	0	0%
06/02/2024 00:30	214	Fitzjohn's Avenue	Dropped Kerb	0	5.8	1	0%
06/02/2024 00:30	215	Fitzjohn's Avenue	Double Yellow	0	15	3	0%
06/02/2024 00:30	215	Fitzjohn's Avenue	Double Yellow	0	0	0	0%
06/02/2024 00:30	215	Fitzjohn's Avenue	Double Yellow	0	0	0	0%
06/02/2024 00:30	216	Fitzjohn's Avenue	Dropped Kerb	0	5.8	1	0%
06/02/2024 00:30	217	Fitzjohn's Avenue	Double Yellow	0	27.3	5	0%
06/02/2024 00:30	217	Fitzjohn's Avenue	Double Yellow	0	0	0	0%
06/02/2024 00:30	217	Fitzjohn's Avenue	Double Yellow	0	0	0	0%
06/02/2024 00:30	217	Fitzjohn's Avenue	Double Yellow	0	0	0	0%
06/02/2024 00:30	217	Fitzjohn's Avenue	Double Yellow	0	0	0	0%
06/02/2024 00:30	217	Fitzjohn's Avenue	Double Yellow	0	0	0	0%
06/02/2024 00:30	218	Fitzjohn's Avenue	Dropped Kerb	0	3.4	0	0%
06/02/2024 00:30	219	Fitzjohn's Avenue	Double Yellow	0	1.1	0	0%
07/02/2024 00:30	1	Fitzjohn's Avenue	Dropped Kerb	0	6.6	1	0%
07/02/2024 00:30	2	Fitzjohn's Avenue	Dropped Kerb	0	3.4	0	0%
07/02/2024 00:30	3	Fitzjohn's Avenue	Double Yellow	0	5.1	1	0%
07/02/2024 00:30	4	Fitzjohn's Avenue	Dropped Kerb	0	5.3	1	0%
07/02/2024 00:30	5	Fitzjohn's Avenue	Double Yellow	0	18.5	3	0%
07/02/2024 00:30	5	Fitzjohn's Avenue	Double Yellow	0	0	0	0%
07/02/2024 00:30	5	Fitzjohn's Avenue	Double Yellow	0	0	0	0%
07/02/2024 00:30	6	Fitzjohn's Avenue	Dropped Kerb	0	6.7	1	0%
07/02/2024 00:30	7	Fitzjohn's Avenue	Double Yellow	0	11.6	2	0%
07/02/2024 00:30	7	Fitzjohn's Avenue	Double Yellow	0	0	0	0%
07/02/2024 00:30	8	Fitzjohn's Avenue	Dropped Kerb	0	11.4	2	0%
07/02/2024 00:30	8	Fitzjohn's Avenue	Dropped Kerb	0	0	0	0%
07/02/2024 00:30	9	Fitzjohn's Avenue	Double Yellow	0	7.7	1	0%

07/02/2024 00:30	10	Fitzjohn's Avenue	Dropped Kerb	0	5.6	1	0%
07/02/2024 00:30	11	Fitzjohn's Avenue	Double Yellow	0	1.3	0	0%
07/02/2024 00:30	12	Fitzjohn's Avenue	Bus Stop	0	16.6	3	0%
07/02/2024 00:30	12	Fitzjohn's Avenue	Bus Stop	0	0	0	0%
07/02/2024 00:30	12	Fitzjohn's Avenue	Bus Stop	0	0	0	0%
07/02/2024 00:30	13	Fitzjohn's Avenue	Pay By Phone	0	56.5	11	0%
07/02/2024 00:30	13	Fitzjohn's Avenue	Pay By Phone	0	0	0	0%
07/02/2024 00:30	13	Fitzjohn's Avenue	Pay By Phone	0	0	0	0%
07/02/2024 00:30	13	Fitzjohn's Avenue	Pay By Phone	0	0	0	0%
07/02/2024 00:30	13	Fitzjohn's Avenue	Pay By Phone	0	0	0	0%
07/02/2024 00:30	13	Fitzjohn's Avenue	Pay By Phone	0	0	0	0%
07/02/2024 00:30	13	Fitzjohn's Avenue	Pay By Phone	0	0	0	0%
07/02/2024 00:30	13	Fitzjohn's Avenue	Pay By Phone	1	0	0	100%
07/02/2024 00:30	13	Fitzjohn's Avenue	Pay By Phone	0	0	0	0%
07/02/2024 00:30	13	Fitzjohn's Avenue	Pay By Phone	0	0	0	0%
07/02/2024 00:30	13	Fitzjohn's Avenue	Pay By Phone	0	0	0	0%
07/02/2024 00:30	14	Fitzjohn's Avenue	Double Yellow	0	1.3	0	0%
07/02/2024 00:30	15	Fitzjohn's Avenue	Dropped Kerb	0	4.6	0	0%
07/02/2024 00:30	16	Fitzjohn's Avenue	Resident Bay	1	14.2	2	50%
07/02/2024 00:30	16	Fitzjohn's Avenue	Resident Bay	0	0	0	0%
07/02/2024 00:30	16	Fitzjohn's Avenue	Resident Bay	0	0	0	0%
07/02/2024 00:30	17	Fitzjohn's Avenue	Double Yellow	0	1.4	0	0%
07/02/2024 00:30	18	Fitzjohn's Avenue	Dropped Kerb	0	3.5	0	0%
07/02/2024 00:30	19	Fitzjohn's Avenue	Double Yellow	0	1	0	0%
07/02/2024 00:30	20	Fitzjohn's Avenue	Resident Bay	1	20.1	4	25%
07/02/2024 00:30	20	Fitzjohn's Avenue	Resident Bay	0	0	0	0%
07/02/2024 00:30	20	Fitzjohn's Avenue	Resident Bay	0	0	0	0%
07/02/2024 00:30	20	Fitzjohn's Avenue	Resident Bay	1	0	0	100%
07/02/2024 00:30	21	Fitzjohn's Avenue	Double Yellow	0	2.9	0	0%
07/02/2024 00:30	22	Fitzjohn's Avenue	Zig-Zag	0	6.6	1	0%
07/02/2024 00:30	23	Fitzjohn's Avenue	Dropped Kerb	0	6.8	1	0%
07/02/2024 00:30	24	Fitzjohn's Avenue	Zig-Zag	0	4.7	0	0%
07/02/2024 00:30	25	Fitzjohn's Avenue	Dropped Kerb	0	3.5	0	0%
07/02/2024 00:30	26	Fitzjohn's Avenue	Zig-Zag	0	1.5	0	0%
07/02/2024 00:30	27	Lyndhurst Road	Double Yellow	0	5	1	0%
07/02/2024 00:30	28	Lyndhurst Road	Dropped Kerb	0	3.8	0	0%
07/02/2024 00:30	29	Lyndhurst Road	Double Yellow	0	22.4	4	0%
07/02/2024 00:30	29	Lyndhurst Road	Double Yellow	0	0	0	0%
07/02/2024 00:30	29	Lyndhurst Road	Double Yellow	0	0	0	0%
07/02/2024 00:30	29	Lyndhurst Road	Double Yellow	0	0	0	0%
07/02/2024 00:30	30	Lyndhurst Road	Dropped Kerb	0	3.2	0	0%
07/02/2024 00:30	31	Lyndhurst Road	Double Yellow	0	11.8	2	0%
07/02/2024 00:30	31	Lyndhurst Road	Double Yellow	0	0	0	0%
07/02/2024 00:30	32	Lyndhurst Road	Dropped Kerb	0	3.3	0	0%
07/02/2024 00:30	33	Lyndhurst Road	Double Yellow	0	17.9	3	0%
07/02/2024 00:30	33	Lyndhurst Road	Double Yellow	0	0	0	0%
07/02/2024 00:30	33	Lyndhurst Road	Double Yellow	0	0	0	0%
07/02/2024 00:30	34	Lyndhurst Road	Dropped Kerb	0	3.9	0	0%
07/02/2024 00:30	35	Lyndhurst Road	Double Yellow	0	8.9	1	0%
07/02/2024 00:30	35	Lyndhurst Road	Double Yellow	0	0	0	0%
07/02/2024 00:30	36	Lyndhurst Road	Dropped Kerb	0	3.9	0	0%
07/02/2024 00:30	37	Lyndhurst Road	Double Yellow	0	5.5	1	0%
07/02/2024 00:30	38	Lyndhurst Road	Resident Bay	0	13.7	2	0%
07/02/2024 00:30	38	Lyndhurst Road	Resident Bay	0	0	0	0%
07/02/2024 00:30	38	Lyndhurst Road	Resident Bay	1	0	0	100%
07/02/2024 00:30	39	Lyndhurst Road	Double Yellow	0	1.1	0	0%
07/02/2024 00:30	40	Lyndhurst Road	Dropped Kerb	0	5.4	1	0%
07/02/2024 00:30	41	Lyndhurst Road	Double Yellow	0	1	0	0%
07/02/2024 00:30	42	Lyndhurst Road	Resident Bay	0	19.6	3	0%
07/02/2024 00:30	42	Lyndhurst Road	Resident Bay	0	0	0	0%
07/02/2024 00:30	42	Lyndhurst Road	Resident Bay	0	0	0	0%
07/02/2024 00:30	42	Lyndhurst Road	Resident Bay	0	0	0	0%

07/02/2024 00:30	43	Lyndhurst Road	Double Yellow	0	14	2	0%
07/02/2024 00:30	44	Akenside Road	Double Yellow	0	2.9	0	0%
07/02/2024 00:30	45	Akenside Road	Dropped Kerb	0	3.4	0	0%
07/02/2024 00:30	46	Akenside Road	Double Yellow	0	24	4	0%
07/02/2024 00:30	46	Akenside Road	Double Yellow	0	0	0	0%
07/02/2024 00:30	46	Akenside Road	Double Yellow	0	0	0	0%
07/02/2024 00:30	46	Akenside Road	Double Yellow	0	0	0	0%
07/02/2024 00:30	46	Akenside Road	Double Yellow	0	0	0	0%
07/02/2024 00:30	47	Akenside Road	Dropped Kerb	0	14	2	0%
07/02/2024 00:30	47	Akenside Road	Dropped Kerb	0	0	0	0%
07/02/2024 00:30	47	Akenside Road	Dropped Kerb	0	0	0	0%
07/02/2024 00:30	48	Akenside Road	Double Yellow	0	1.2	0	0%
07/02/2024 00:30	49	Akenside Road	Resident Bay	1	5.2	1	100%
07/02/2024 00:30	50	Akenside Road	Double Yellow	0	2.5	0	0%
07/02/2024 00:30	51	Akenside Road	Resident Bay	0	32.2	6	0%
07/02/2024 00:30	51	Akenside Road	Resident Bay	0	0	0	0%
07/02/2024 00:30	51	Akenside Road	Resident Bay	0	0	0	0%
07/02/2024 00:30	51	Akenside Road	Resident Bay	0	0	0	0%
07/02/2024 00:30	51	Akenside Road	Resident Bay	0	0	0	0%
07/02/2024 00:30	51	Akenside Road	Resident Bay	0	0	0	0%
07/02/2024 00:30	52	Akenside Road	Double Yellow	0	14	2	0%
07/02/2024 00:30	52	Akenside Road	Double Yellow	0	0	0	0%
07/02/2024 00:30	52	Akenside Road	Double Yellow	0	0	0	0%
07/02/2024 00:30	53	Akenside Road	Dropped Kerb	0	4.3	0	0%
07/02/2024 00:30	54	Akenside Road	Double Yellow	0	4.8	0	0%
07/02/2024 00:30	55	Lyndhurst Road	Double Yellow	0	7.4	1	0%
07/02/2024 00:30	56	Lyndhurst Road	Dropped Kerb	0	3.5	0	0%
07/02/2024 00:30	57	Lyndhurst Road	Double Yellow	0	5	1	0%
07/02/2024 00:30	58	Fitzjohn's Avenue	Double Yellow	0	4.4	0	0%
07/02/2024 00:30	59	Fitzjohn's Avenue	Resident Bay	0	16.1	3	0%
07/02/2024 00:30	59	Fitzjohn's Avenue	Resident Bay	0	0	0	0%
07/02/2024 00:30	59	Fitzjohn's Avenue	Resident Bay	1	0	0	100%
07/02/2024 00:30	60	Fitzjohn's Avenue	Single Yellow	0	5.1	1	0%
07/02/2024 00:30	61	Fitzjohn's Avenue	Bus Stop	0	19.1	3	0%
07/02/2024 00:30	61	Fitzjohn's Avenue	Bus Stop	0	0	0	0%
07/02/2024 00:30	61	Fitzjohn's Avenue	Bus Stop	0	0	0	0%
07/02/2024 00:30	61	Fitzjohn's Avenue	Bus Stop	0	0	0	0%
07/02/2024 00:30	62	Fitzjohn's Avenue	Single Yellow	0	2.3	0	0%
07/02/2024 00:30	63	Fitzjohn's Avenue	Dropped Kerb	0	5	1	0%
07/02/2024 00:30	64	Fitzjohn's Avenue	Single Yellow	0	4.3	0	0%
07/02/2024 00:30	65	Fitzjohn's Avenue	Dropped Kerb	0	6.7	1	0%
07/02/2024 00:30	66	Fitzjohn's Avenue	Single Yellow	0	1.1	0	0%
07/02/2024 00:30	67	Fitzjohn's Avenue	Resident Bay	1	9	1	100%
07/02/2024 00:30	67	Fitzjohn's Avenue	Resident Bay	1	0	0	100%
07/02/2024 00:30	68	Fitzjohn's Avenue	Single Yellow	0	3.3	0	0%
07/02/2024 00:30	69	Fitzjohn's Avenue	Dropped Kerb	0	3.8	0	0%
07/02/2024 00:30	70	Fitzjohn's Avenue	Single Yellow	0	1.4	0	0%
07/02/2024 00:30	71	Fitzjohn's Avenue	Resident Bay	1	9.9	1	100%
07/02/2024 00:30	71	Fitzjohn's Avenue	Resident Bay	1	0	0	100%
07/02/2024 00:30	72	Fitzjohn's Avenue	Single Yellow	0	1.8	0	0%
07/02/2024 00:30	73	Fitzjohn's Avenue	Dropped Kerb	0	8.1	1	0%
07/02/2024 00:30	74	Fitzjohn's Avenue	Single Yellow	0	1.2	0	0%
07/02/2024 00:30	75	Fitzjohn's Avenue	Resident Bay	1	9.9	1	100%
07/02/2024 00:30	75	Fitzjohn's Avenue	Resident Bay	1	0	0	100%
07/02/2024 00:30	76	Fitzjohn's Avenue	Single Yellow	0	5	1	0%
07/02/2024 00:30	77	Fitzjohn's Avenue	Dropped Kerb	0	8.4	1	0%
07/02/2024 00:30	78	Fitzjohn's Avenue	Single Yellow	0	4.8	0	0%
07/02/2024 00:30	79	Fitzjohn's Avenue	Resident Bay	1	12.2	2	50%
07/02/2024 00:30	79	Fitzjohn's Avenue	Resident Bay	1	0	0	100%
07/02/2024 00:30	80	Fitzjohn's Avenue	Car Club	0	5	1	0%
07/02/2024 00:30	81	Fitzjohn's Avenue	Resident Bay	1	4.9	0	100%
07/02/2024 00:30	82	Fitzjohn's Avenue	Double Yellow	0	2.1	0	0%

07/02/2024 00:30	83	Fitzjohn's Avenue	Dropped Kerb	0	3.5	0	0%
07/02/2024 00:30	84	Fitzjohn's Avenue	Zig-Zag	0	2.7	0	0%
07/02/2024 00:30	85	Fitzjohn's Avenue	Zig-Zag	0	11.4	2	0%
07/02/2024 00:30	85	Fitzjohn's Avenue	Zig-Zag	0	0	0	0%
07/02/2024 00:30	86	Fitzjohn's Avenue	Dropped Kerb	0	3.4	0	0%
07/02/2024 00:30	87	Fitzjohn's Avenue	Zig-Zag	0	4.9	0	0%
07/02/2024 00:30	88	Fitzjohn's Avenue	Dropped Kerb	0	10.9	2	0%
07/02/2024 00:30	88	Fitzjohn's Avenue	Dropped Kerb	0	0	0	0%
07/02/2024 00:30	89	Fitzjohn's Avenue	Zig-Zag	0	2.3	0	0%
07/02/2024 00:30	90	Fitzjohn's Avenue	Resident Bay	1	21.8	4	25%
07/02/2024 00:30	90	Fitzjohn's Avenue	Resident Bay	1	0	0	100%
07/02/2024 00:30	90	Fitzjohn's Avenue	Resident Bay	0	0	0	0%
07/02/2024 00:30	90	Fitzjohn's Avenue	Resident Bay	1	0	0	100%
07/02/2024 00:30	91	Fitzjohn's Avenue	Double Yellow	0	5	1	0%
07/02/2024 00:30	92	Netherhall Gardens	Double Yellow	0	3.7	0	0%
07/02/2024 00:30	93	Netherhall Gardens	Dropped Kerb	0	1.8	0	0%
07/02/2024 00:30	94	Netherhall Gardens	Double Yellow	0	1.3	0	0%
07/02/2024 00:30	95	Netherhall Gardens	Single Yellow	0	5.4	1	0%
07/02/2024 00:30	96	Netherhall Gardens	Motorcycle Bay	1	4	6	17%
07/02/2024 00:30	96	Netherhall Gardens	Motorcycle Bay	1	0	0	100%
07/02/2024 00:30	96	Netherhall Gardens	Motorcycle Bay	0	0	0	0%
07/02/2024 00:30	96	Netherhall Gardens	Motorcycle Bay	0	0	0	0%
07/02/2024 00:30	97	Netherhall Gardens	Resident Bay	1	24.7	4	25%
07/02/2024 00:30	97	Netherhall Gardens	Resident Bay	1	0	0	100%
07/02/2024 00:30	97	Netherhall Gardens	Resident Bay	1	0	0	100%
07/02/2024 00:30	97	Netherhall Gardens	Resident Bay	1	0	0	100%
07/02/2024 00:30	97	Netherhall Gardens	Resident Bay	0	0	0	0%
07/02/2024 00:30	98	Netherhall Gardens	Single Yellow	0	1	0	0%
07/02/2024 00:30	99	Netherhall Gardens	Dropped Kerb	0	3.6	0	0%
07/02/2024 00:30	100	Netherhall Gardens	Single Yellow	0	2.6	0	0%
07/02/2024 00:30	101	Netherhall Gardens	Resident Bay	1	14.2	2	50%
07/02/2024 00:30	101	Netherhall Gardens	Resident Bay	0	0	0	0%
07/02/2024 00:30	101	Netherhall Gardens	Resident Bay	1	0	0	100%
07/02/2024 00:30	102	Netherhall Gardens	Single Yellow	0	1.7	0	0%
07/02/2024 00:30	103	Netherhall Gardens	Dropped Kerb	0	3.3	0	0%
07/02/2024 00:30	104	Netherhall Gardens	Resident Bay	1	10.1	2	50%
07/02/2024 00:30	104	Netherhall Gardens	Resident Bay	1	0	0	100%
07/02/2024 00:30	105	Netherhall Gardens	Single Yellow	0	2.1	0	0%
07/02/2024 00:30	106	Netherhall Gardens	Dropped Kerb	0	2.9	0	0%
07/02/2024 00:30	107	Netherhall Gardens	Single Yellow	0	1.5	0	0%
07/02/2024 00:30	108	Netherhall Gardens	Dropped Kerb	0	3.1	0	0%
07/02/2024 00:30	109	Netherhall Gardens	Single Yellow	0	2	0	0%
07/02/2024 00:30	110	Netherhall Gardens	Dropped Kerb	0	11.6	2	0%
07/02/2024 00:30	110	Netherhall Gardens	Dropped Kerb	0	0	0	0%
07/02/2024 00:30	111	Netherhall Gardens	Single Yellow	0	7	1	0%
07/02/2024 00:30	112	Netherhall Gardens	Dropped Kerb	0	9.8	1	0%
07/02/2024 00:30	112	Netherhall Gardens	Dropped Kerb	0	0	0	0%
07/02/2024 00:30	113	Netherhall Gardens	Resident Bay	1	10.9	2	50%
07/02/2024 00:30	113	Netherhall Gardens	Resident Bay	1	0	0	100%
07/02/2024 00:30	114	Netherhall Gardens	Single Yellow	0	3.8	0	0%
07/02/2024 00:30	115	Maresfield Garden	Dropped Kerb	0	2.5	0	0%
07/02/2024 00:30	116	Maresfield Garden	Single Yellow	0	7.5	1	0%
07/02/2024 00:30	117	Maresfield Garden	Electric Vehicle Bay	0	5.4	1	0%
07/02/2024 00:30	118	Maresfield Garden	Resident Bay	0	11.7	2	0%
07/02/2024 00:30	118	Maresfield Garden	Resident Bay	1	0	0	100%
07/02/2024 00:30	119	Maresfield Garden	Single Yellow	0	1.5	0	0%
07/02/2024 00:30	120	Maresfield Garden	Dropped Kerb	0	4.6	0	0%
07/02/2024 00:30	121	Maresfield Garden	Single Yellow	0	2.2	0	0%
07/02/2024 00:30	122	Maresfield Garden	Dropped Kerb	0	3.3	0	0%
07/02/2024 00:30	123	Maresfield Garden	Single Yellow	0	1.1	0	0%
07/02/2024 00:30	124	Maresfield Garden	Resident Bay	1	54.2	10	10%
07/02/2024 00:30	124	Maresfield Garden	Resident Bay	1	0	0	100%

07/02/2024 00:30	124	Maresfield Garden	Resident Bay	1	0	0	<div><div></div></div> 100%
07/02/2024 00:30	124	Maresfield Garden	Resident Bay	0	0	0	0%
07/02/2024 00:30	124	Maresfield Garden	Resident Bay	0	0	0	0%
07/02/2024 00:30	124	Maresfield Garden	Resident Bay	0	0	0	0%
07/02/2024 00:30	124	Maresfield Garden	Resident Bay	0	0	0	0%
07/02/2024 00:30	124	Maresfield Garden	Resident Bay	0	0	0	0%
07/02/2024 00:30	124	Maresfield Garden	Resident Bay	1	0	0	<div><div></div></div> 100%
07/02/2024 00:30	124	Maresfield Garden	Resident Bay	1	0	0	<div><div></div></div> 100%
07/02/2024 00:30	124	Maresfield Garden	Resident Bay	1	0	0	<div><div></div></div> 100%
07/02/2024 00:30	125	Maresfield Garden	Single Yellow	0	1.4	0	0%
07/02/2024 00:30	126	Maresfield Garden	Dropped Kerb	0	3.7	0	0%
07/02/2024 00:30	127	Maresfield Garden	Single Yellow	0	1.7	0	0%
07/02/2024 00:30	128	Maresfield Garden	Dropped Kerb	0	3.4	0	0%
07/02/2024 00:30	129	Maresfield Garden	Single Yellow	0	1.3	0	0%
07/02/2024 00:30	130	Maresfield Garden	Resident Bay	1	14	2	<div><div></div></div> 50%
07/02/2024 00:30	130	Maresfield Garden	Resident Bay	1	0	0	<div><div></div></div> 100%
07/02/2024 00:30	130	Maresfield Garden	Resident Bay	1	0	0	<div><div></div></div> 100%
07/02/2024 00:30	131	Maresfield Garden	Dropped Kerb	0	11.7	2	0%
07/02/2024 00:30	131	Maresfield Garden	Dropped Kerb	0	0	0	0%
07/02/2024 00:30	132	Maresfield Garden	Single Yellow	0	1.2	0	0%
07/02/2024 00:30	133	Maresfield Garden	Resident Bay	1	12.1	2	<div><div></div></div> 50%
07/02/2024 00:30	133	Maresfield Garden	Resident Bay	1	0	0	<div><div></div></div> 100%
07/02/2024 00:30	134	Maresfield Garden	Dropped Kerb	0	7.9	1	0%
07/02/2024 00:30	135	Maresfield Garden	Single Yellow	0	11	2	0%
07/02/2024 00:30	135	Maresfield Garden	Single Yellow	0	0	0	0%
07/02/2024 00:30	136	Maresfield Garden	Dropped Kerb	0	3.1	0	0%
07/02/2024 00:30	137	Maresfield Garden	Single Yellow	0	16.5	3	0%
07/02/2024 00:30	137	Maresfield Garden	Single Yellow	0	0	0	0%
07/02/2024 00:30	137	Maresfield Garden	Single Yellow	0	0	0	0%
07/02/2024 00:30	138	Maresfield Garden	Dropped Kerb	0	3.5	0	0%
07/02/2024 00:30	139	Maresfield Garden	Resident Bay	0	26.5	5	0%
07/02/2024 00:30	139	Maresfield Garden	Resident Bay	0	0	0	0%
07/02/2024 00:30	139	Maresfield Garden	Resident Bay	0	0	0	0%
07/02/2024 00:30	139	Maresfield Garden	Resident Bay	1	0	0	<div><div></div></div> 100%
07/02/2024 00:30	139	Maresfield Garden	Resident Bay	0	0	0	0%
07/02/2024 00:30	140	Maresfield Garden	Single Yellow	0	3.5	0	0%
07/02/2024 00:30	141	Maresfield Garden	Dropped Kerb	0	3.7	0	0%
07/02/2024 00:30	142	Maresfield Garden	Single Yellow	0	12.9	2	0%
07/02/2024 00:30	142	Maresfield Garden	Single Yellow	0	0	0	0%
07/02/2024 00:30	143	Maresfield Garden	Dropped Kerb	0	2.4	0	0%
07/02/2024 00:30	144	Netherhall Gardens	Single Yellow	0	6.1	1	0%
07/02/2024 00:30	145	Netherhall Gardens	Resident Bay	0	26	5	0%
07/02/2024 00:30	145	Netherhall Gardens	Resident Bay	0	0	0	0%
07/02/2024 00:30	145	Netherhall Gardens	Resident Bay	0	0	0	0%
07/02/2024 00:30	145	Netherhall Gardens	Resident Bay	1	0	0	<div><div></div></div> 100%
07/02/2024 00:30	145	Netherhall Gardens	Resident Bay	1	0	0	<div><div></div></div> 100%
07/02/2024 00:30	146	Netherhall Gardens	Single Yellow	0	1.9	0	0%
07/02/2024 00:30	147	Netherhall Gardens	Dropped Kerb	0	5.5	1	0%
07/02/2024 00:30	148	Netherhall Gardens	Single Yellow	0	6.4	1	0%
07/02/2024 00:30	149	Netherhall Gardens	Dropped Kerb	0	3.5	0	0%
07/02/2024 00:30	150	Netherhall Gardens	Single Yellow	0	0.9	0	0%
07/02/2024 00:30	151	Netherhall Gardens	Resident Bay	1	6.2	1	<div><div></div></div> 100%
07/02/2024 00:30	152	Netherhall Gardens	Single Yellow	0	2.7	0	0%
07/02/2024 00:30	153	Netherhall Gardens	Dropped Kerb	0	5.1	1	0%
07/02/2024 00:30	154	Netherhall Gardens	Single Yellow	0	3.3	0	0%
07/02/2024 00:30	155	Netherhall Gardens	Dropped Kerb	0	5.2	1	0%
07/02/2024 00:30	156	Netherhall Gardens	Single Yellow	0	1.1	0	0%
07/02/2024 00:30	157	Netherhall Gardens	Resident Bay	1	19	3	<div><div></div></div> 33%
07/02/2024 00:30	157	Netherhall Gardens	Resident Bay	0	0	0	0%
07/02/2024 00:30	157	Netherhall Gardens	Resident Bay	1	0	0	<div><div></div></div> 100%
07/02/2024 00:30	157	Netherhall Gardens	Resident Bay	1	0	0	<div><div></div></div> 100%
07/02/2024 00:30	158	Netherhall Gardens	Single Yellow	0	8.4	1	0%

07/02/2024 00:30	159	Netherhall Gardens	Dropped Kerb	0	4.6	0	0%
07/02/2024 00:30	160	Netherhall Gardens	Single Yellow	0	4.3	0	0%
07/02/2024 00:30	161	Netherhall Gardens	Dropped Kerb	0	5	1	0%
07/02/2024 00:30	162	Netherhall Gardens	Single Yellow	0	7.9	1	0%
07/02/2024 00:30	163	Netherhall Gardens	Dropped Kerb	0	3.2	0	0%
07/02/2024 00:30	163	Netherhall Gardens	Dropped Kerb	0	0	0	0%
07/02/2024 00:30	164	Netherhall Gardens	Resident Bay	1	11	2	50%
07/02/2024 00:30	164	Netherhall Gardens	Resident Bay	1	0	0	100%
07/02/2024 00:30	165	Netherhall Gardens	Single Yellow	0	3.4	0	0%
07/02/2024 00:30	166	Netherhall Gardens	Dropped Kerb	0	3.6	0	0%
07/02/2024 00:30	167	Netherhall Gardens	Single Yellow	0	1.1	0	0%
07/02/2024 00:30	168	Netherhall Gardens	Resident Bay	1	16.2	3	33%
07/02/2024 00:30	168	Netherhall Gardens	Resident Bay	0	0	0	0%
07/02/2024 00:30	168	Netherhall Gardens	Resident Bay	1	0	0	100%
07/02/2024 00:30	169	Netherhall Gardens	Single Yellow	0	1.1	0	0%
07/02/2024 00:30	170	Netherhall Gardens	Dropped Kerb	0	3.9	0	0%
07/02/2024 00:30	171	Netherhall Gardens	Single Yellow	0	0.9	0	0%
07/02/2024 00:30	172	Netherhall Gardens	Disabled Bay	0	5.1	1	0%
07/02/2024 00:30	173	Netherhall Gardens	Resident Bay	1	17.9	3	33%
07/02/2024 00:30	173	Netherhall Gardens	Resident Bay	0	0	0	0%
07/02/2024 00:30	173	Netherhall Gardens	Resident Bay	1	0	0	100%
07/02/2024 00:30	173	Netherhall Gardens	Resident Bay	1	0	0	100%
07/02/2024 00:30	174	Netherhall Gardens	Single Yellow	0	2.4	0	0%
07/02/2024 00:30	175	Netherhall Gardens	Dropped Kerb	0	4.6	0	0%
07/02/2024 00:30	176	Netherhall Gardens	Single Yellow	0	4.3	0	0%
07/02/2024 00:30	177	Netherhall Gardens	Dropped Kerb	0	4.2	0	0%
07/02/2024 00:30	178	Netherhall Gardens	Single Yellow	0	5.5	1	0%
07/02/2024 00:30	179	Netherhall Gardens	Dropped Kerb	0	8.4	1	0%
07/02/2024 00:30	180	Netherhall Gardens	Single Yellow	0	2.3	0	0%
07/02/2024 00:30	181	Netherhall Gardens	Resident Bay	1	4.8	0	100%
07/02/2024 00:30	182	Netherhall Gardens	Single Yellow	0	2.8	0	0%
07/02/2024 00:30	183	Netherhall Gardens	Dropped Kerb	0	4.5	0	0%
07/02/2024 00:30	184	Netherhall Gardens	Resident Bay	1	30.2	6	17%
07/02/2024 00:30	184	Netherhall Gardens	Resident Bay	0	0	0	0%
07/02/2024 00:30	184	Netherhall Gardens	Resident Bay	1	0	0	100%
07/02/2024 00:30	184	Netherhall Gardens	Resident Bay	1	0	0	100%
07/02/2024 00:30	184	Netherhall Gardens	Resident Bay	1	0	0	100%
07/02/2024 00:30	184	Netherhall Gardens	Resident Bay	1	0	0	100%
07/02/2024 00:30	185	Netherhall Gardens	Single Yellow	0	1.4	0	0%
07/02/2024 00:30	186	Netherhall Gardens	Dropped Kerb	0	4.3	0	0%
07/02/2024 00:30	187	Netherhall Gardens	Single Yellow	0	1.6	0	0%
07/02/2024 00:30	188	Netherhall Gardens	Resident Bay	0	5.2	1	0%
07/02/2024 00:30	189	Netherhall Gardens	Single Yellow	0	1.6	0	0%
07/02/2024 00:30	190	Netherhall Gardens	Dropped Kerb	0	3	0	0%
07/02/2024 00:30	191	Netherhall Gardens	Single Yellow	0	1.5	0	0%
07/02/2024 00:30	192	Netherhall Gardens	Resident Bay	0	7.5	1	0%
07/02/2024 00:30	193	Netherhall Gardens	Disabled Bay	1	6.9	1	100%
07/02/2024 00:30	194	Netherhall Gardens	Resident Bay	1	13.9	2	50%
07/02/2024 00:30	194	Netherhall Gardens	Resident Bay	1	0	0	100%
07/02/2024 00:30	194	Netherhall Gardens	Resident Bay	0	0	0	0%
07/02/2024 00:30	195	Netherhall Gardens	Single Yellow	0	1.2	0	0%
07/02/2024 00:30	196	Netherhall Gardens	Dropped Kerb	0	3.8	0	0%
07/02/2024 00:30	197	Netherhall Gardens	Single Yellow	0	1.1	0	0%
07/02/2024 00:30	198	Netherhall Gardens	Resident Bay	1	27.4	5	20%
07/02/2024 00:30	198	Netherhall Gardens	Resident Bay	1	0	0	100%
07/02/2024 00:30	198	Netherhall Gardens	Resident Bay	0	0	0	0%
07/02/2024 00:30	198	Netherhall Gardens	Resident Bay	0	0	0	0%
07/02/2024 00:30	198	Netherhall Gardens	Resident Bay	1	0	0	100%
07/02/2024 00:30	198	Netherhall Gardens	Resident Bay	1	0	0	100%
07/02/2024 00:30	199	Netherhall Gardens	Single Yellow	0	2.1	0	0%
07/02/2024 00:30	200	Netherhall Gardens	Double Yellow	0	5.1	1	0%
07/02/2024 00:30	201	Netherhall Gardens	Dropped Kerb	0	1.7	0	0%

07/02/2024 00:30	202	Netherhall Gardens	Double Yellow	0	4.6	0	0%
07/02/2024 00:30	203	Fitzjohn's Avenue	Double Yellow	0	12.5	2	0%
07/02/2024 00:30	203	Fitzjohn's Avenue	Double Yellow	0	0	0	0%
07/02/2024 00:30	204	Fitzjohn's Avenue	Bus Stop	0	19.9	3	0%
07/02/2024 00:30	204	Fitzjohn's Avenue	Bus Stop	0	0	0	0%
07/02/2024 00:30	204	Fitzjohn's Avenue	Bus Stop	0	0	0	0%
07/02/2024 00:30	204	Fitzjohn's Avenue	Bus Stop	0	0	0	0%
07/02/2024 00:30	205	Fitzjohn's Avenue	Double Yellow	0	0.7	0	0%
07/02/2024 00:30	206	Fitzjohn's Avenue	Resident Bay	1	9.8	1	100%
07/02/2024 00:30	206	Fitzjohn's Avenue	Resident Bay	1	0	0	100%
07/02/2024 00:30	207	Fitzjohn's Avenue	Double Yellow	0	4.2	0	0%
07/02/2024 00:30	208	Fitzjohn's Avenue	Dropped Kerb	0	3.8	0	0%
07/02/2024 00:30	209	Fitzjohn's Avenue	Double Yellow	0	1.5	0	0%
07/02/2024 00:30	210	Fitzjohn's Avenue	Resident Bay	0	7.2	1	0%
07/02/2024 00:30	211	Fitzjohn's Avenue	Dropped Kerb	0	9.3	1	0%
07/02/2024 00:30	211	Fitzjohn's Avenue	Dropped Kerb	0	0	0	0%
07/02/2024 00:30	212	Fitzjohn's Avenue	Resident Bay	1	9	1	100%
07/02/2024 00:30	212	Fitzjohn's Avenue	Resident Bay	1	0	0	100%
07/02/2024 00:30	213	Fitzjohn's Avenue	Double Yellow	0	17.6	3	0%
07/02/2024 00:30	213	Fitzjohn's Avenue	Double Yellow	0	0	0	0%
07/02/2024 00:30	213	Fitzjohn's Avenue	Double Yellow	0	0	0	0%
07/02/2024 00:30	213	Fitzjohn's Avenue	Double Yellow	0	0	0	0%
07/02/2024 00:30	214	Fitzjohn's Avenue	Dropped Kerb	0	5.8	1	0%
07/02/2024 00:30	215	Fitzjohn's Avenue	Double Yellow	0	15	3	0%
07/02/2024 00:30	215	Fitzjohn's Avenue	Double Yellow	0	0	0	0%
07/02/2024 00:30	215	Fitzjohn's Avenue	Double Yellow	0	0	0	0%
07/02/2024 00:30	216	Fitzjohn's Avenue	Dropped Kerb	0	5.8	1	0%
07/02/2024 00:30	217	Fitzjohn's Avenue	Double Yellow	0	27.3	5	0%
07/02/2024 00:30	217	Fitzjohn's Avenue	Double Yellow	0	0	0	0%
07/02/2024 00:30	217	Fitzjohn's Avenue	Double Yellow	0	0	0	0%
07/02/2024 00:30	217	Fitzjohn's Avenue	Double Yellow	0	0	0	0%
07/02/2024 00:30	217	Fitzjohn's Avenue	Double Yellow	0	0	0	0%
07/02/2024 00:30	217	Fitzjohn's Avenue	Double Yellow	0	0	0	0%
07/02/2024 00:30	218	Fitzjohn's Avenue	Dropped Kerb	0	3.4	0	0%
07/02/2024 00:30	219	Fitzjohn's Avenue	Double Yellow	0	1.1	0	0%

Area: Total		Vehicles Park			Occupancy			
Street:	Day	Restriction	Tue	Wed	Feb-2024	Tue	Wed	Feb-2024
			06/02	07/02		06/02	07/02	
			00:30	00:30	Capacity	00:30	00:30	Len (m)
Akenside Road	-		2	1	15	13%	7%	108.5
Akenside Road	Double Yellow		0	0	6	0%	0%	49.4
Akenside Road	Dropped Kerb		0	0	2	0%	0%	21.7
Akenside Road	Resident Bay		2	1	7	29%	14%	37.4
Fitzjohn's Avenue	-		23	21	84	27%	25%	603.1
Fitzjohn's Avenue	Bus Stop		0	0	9	0%	0%	55.6
Fitzjohn's Avenue	Car Club		0	0	1	0%	0%	5
Fitzjohn's Avenue	Double Yellow		0	0	21	0%	0%	142.2
Fitzjohn's Avenue	Dropped Kerb		0	0	16	0%	0%	135.3
Fitzjohn's Avenue	Pay By Phone		2	1	11	18%	9%	56.5
Fitzjohn's Avenue	Resident Bay		21	20	21	100%	95%	144.1
Fitzjohn's Avenue	Single Yellow		0	0	2	0%	0%	30.3
Fitzjohn's Avenue	Zig-Zag		0	0	3	0%	0%	34.1
Lyndhurst Road	-		2	1	22	9%	5%	160.3
Lyndhurst Road	Double Yellow		0	0	16	0%	0%	100
Lyndhurst Road	Dropped Kerb		0	0	1	0%	0%	27
Lyndhurst Road	Resident Bay		2	1	5	40%	20%	33.3
Maresfield Garden	-		14	13	33	42%	39%	235.5
Maresfield Garden	Dropped Kerb		0	0	3	0%	0%	49.8
Maresfield Garden	Electric Vehicle Bay		0	0	1	0%	0%	5.4
Maresfield Garden	Resident Bay		14	13	21	67%	62%	118.5
Maresfield Garden	Single Yellow		0	0	8	0%	0%	61.8
Netherhall Gardens	-		36	38	66	55%	58%	490.5
Netherhall Gardens	Disabled Bay		1	1	2	50%	50%	12
Netherhall Gardens	Double Yellow		0	0	1	0%	0%	14.7
Netherhall Gardens	Dropped Kerb		0	0	8	0%	0%	110.2
Netherhall Gardens	Motorcycle Bay		2	2	6	33%	33%	4
Netherhall Gardens	Resident Bay		33	35	42	79%	83%	245.2
Netherhall Gardens	Single Yellow		0	0	7	0%	0%	104.4
-	Bus Stop		0	0	9	0%	0%	55.6
-	Car Club		0	0	1	0%	0%	5
-	Disabled Bay		1	1	2	50%	50%	12
-	Double Yellow		0	0	44	0%	0%	306.3
-	Dropped Kerb		0	0	30	0%	0%	344
-	Electric Vehicle Bay		0	0	1	0%	0%	5.4
-	Motorcycle Bay		2	2	6	33%	33%	4
-	Pay By Phone		2	1	11	18%	9%	56.5
-	Resident Bay		72	70	96	75%	73%	578.5
-	Single Yellow		0	0	17	0%	0%	196.5
-	Zig-Zag		0	0	3	0%	0%	34.1
All Streets	-		77	74	220	35%	34%	1597.9

Tuesday 6/2/24 0130-5130

15047 Hampstead



Tuesday 6/2/24 0:30 - 5:30

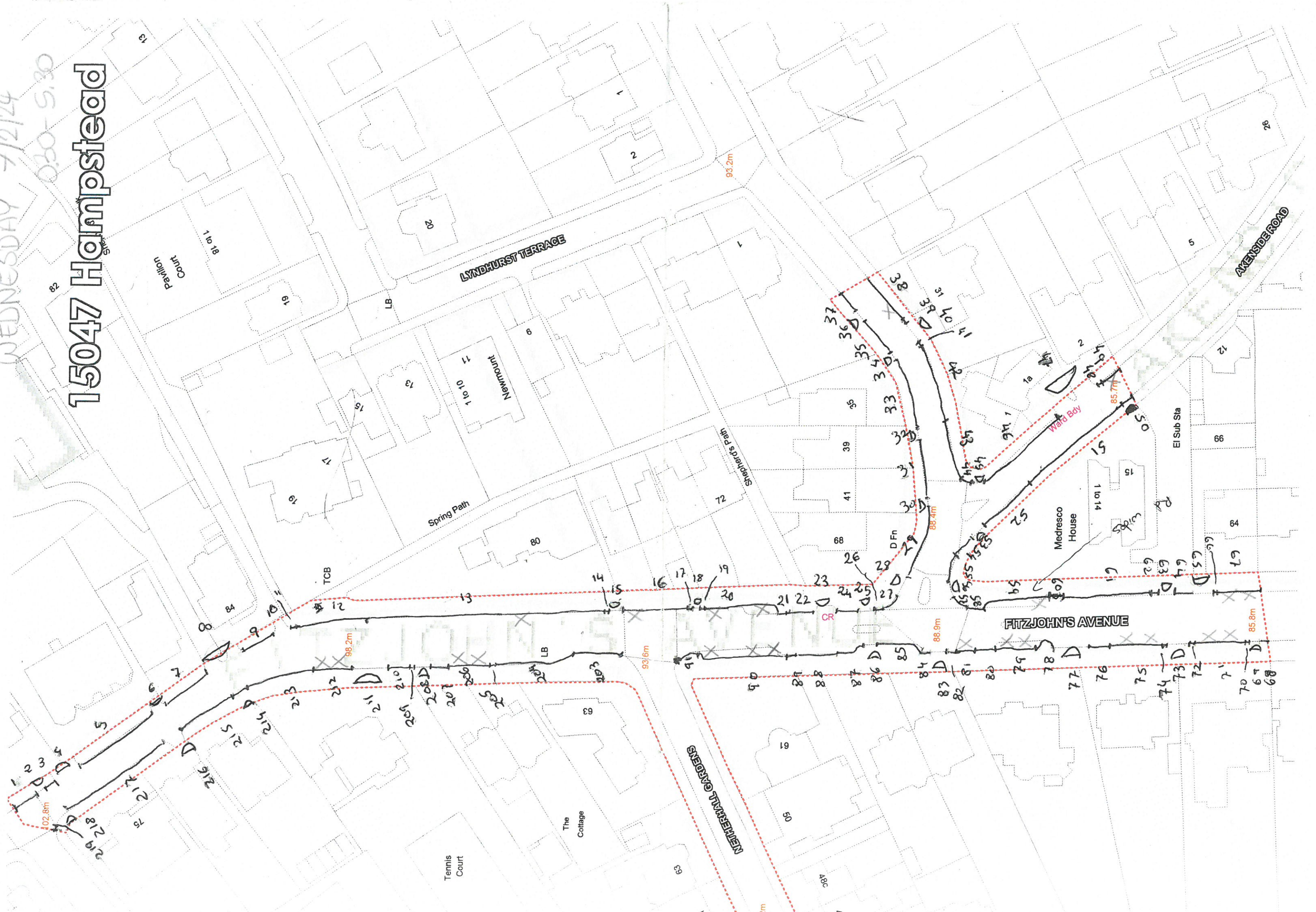
15047 Hampstead



WEDNESDAY 7/2/24

030-5:30

15047 Hampstead



86.6m

15047 Hampstead

The White House

Orchard Corner

NETHERHALL GARDENS

74.3m

FENCED

NETHERHALL GARDENS

MAREFIELD GARDENS

FITZJOHNS AVENUE

88.9m

85.8m

Games Court

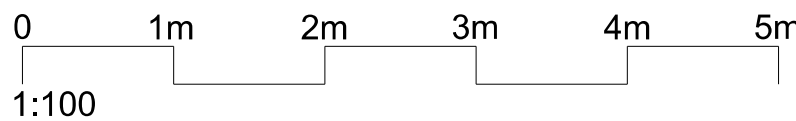
WEDNESDAY 7/2/24 0.30-5.30



Appendix C

(Proposed Application Plans)

REV DATE		ISSUED BY - CK		
01	21.08.23	DN	CS	Post Pre-App update
02	31.08.23	DN	CS	Post Pre-App update
03	05.09.23	DN	CS	Post Pre-App issue
04	12.10.23	DN	CS	Updated Pre-App issue
05	15.12.23	DN	CS	Updated Pre-App issue
06	19.01.24	DN	CS	Updated Pre-App issue
07	28.03.24	AA	DN	Planning Issue



NOTES

DRAWING KEY

Site Boundary Approximate

- Habitable Rooms
- Bathrooms / Shower / WC's
- Access / Utility
- Storage
- Refuse / Recycling & Cycle Store
- Porous Paved Areas
- Outdoor Amenity (Porous Paving)
- Planted Areas

Area Schedule

GIA Approx		
Level 01	46.1 sqM /	496.2 sqFt
Level 00	46.1 sqM /	496.2 sqFt
Level -01	45.4 sqM /	488.7 sqFt
Total	137.6 sqM /	1,481 sqFt

All existing drawings & information based on measured survey drawings provided by ABA Surveys Ltd received 22.12.22 & 09.01.23

SMITH & NEWTON ARCHITECTS

RIBA CHARTERED PRACTICE

A 9 Shepherd's Lane, Homerton, London E9 6JJ
T +44 (0)20 8520 3867
E info@smith-newton.com W www.smith-newton.com

Project
NETHERHALL

Drawing Title
**GA Plans Matrix
Proposed**

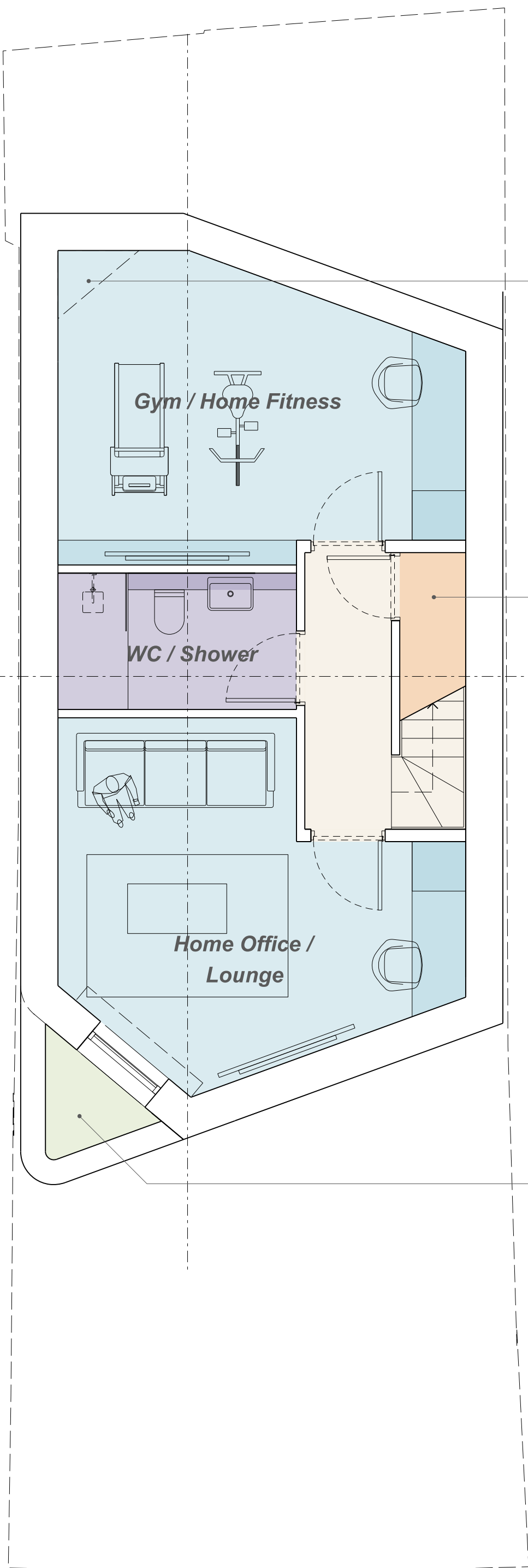
Status
Planning

DRAWING
0736-03-0250

Site Address
Land Adjacent to No.63
Netherhall Gardens
London, NW3 5RE

Scale(s) at A3
1:100

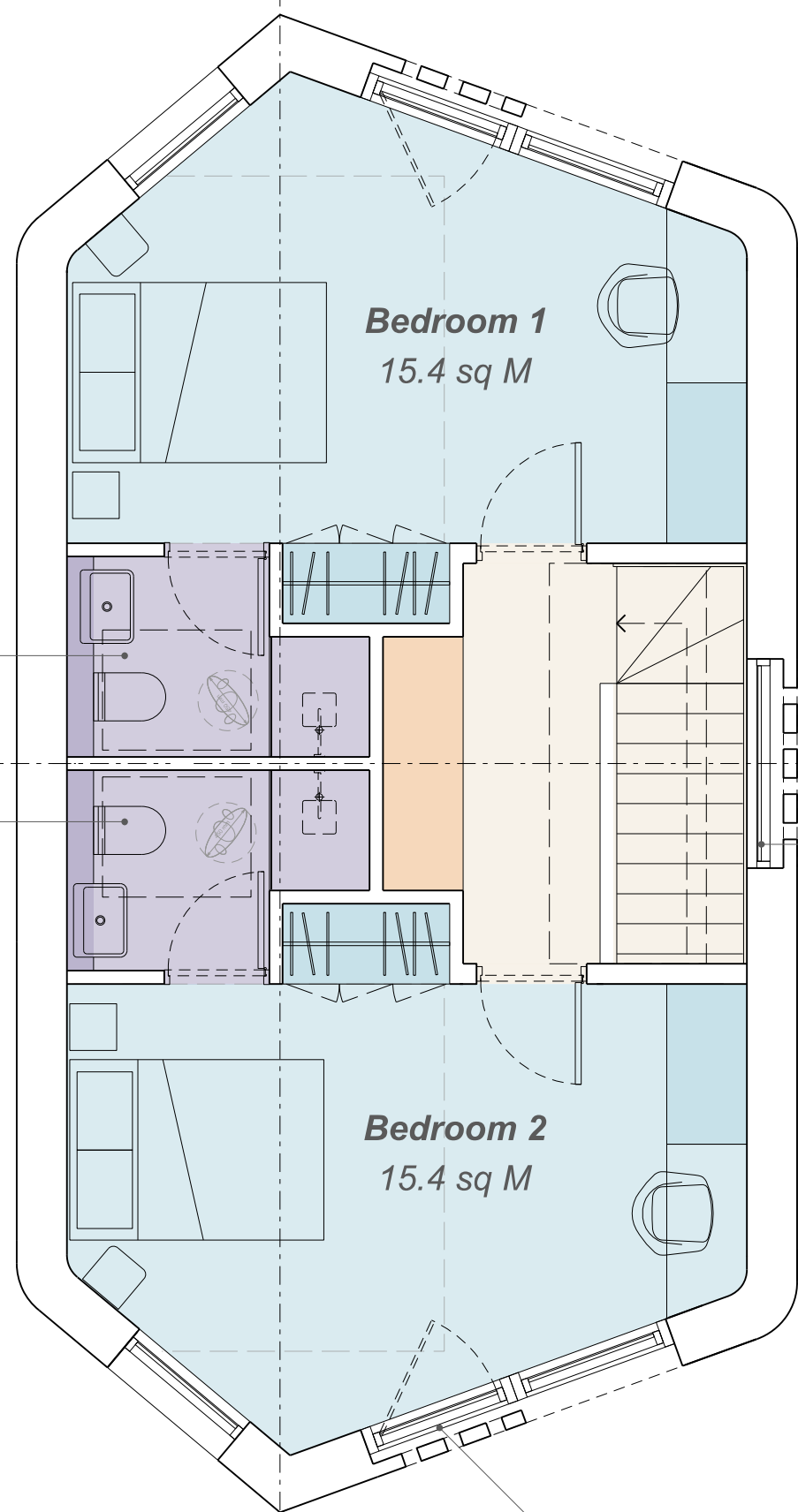
REVISION
07



LOWER GROUND FLOOR
Level -01



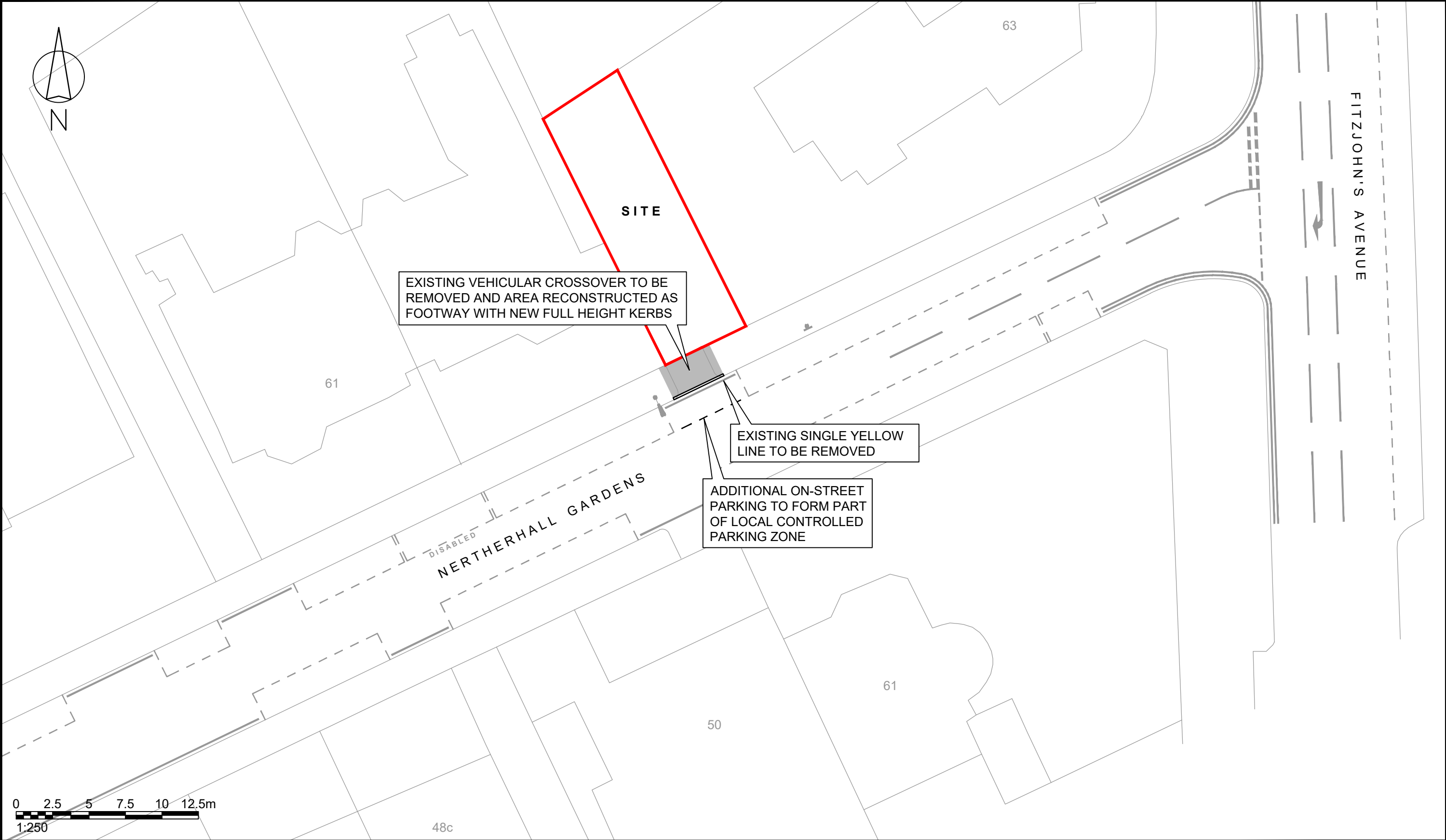
GROUND FLOOR
Level 00




FIRST FLOOR PLAN
Level 01

Appendix D

(Indicative Proposed Highway Works Drawing)



Rev	Details	Drawn	Checked	Date	NOTES :	Client					 ttp consulting transport planning specialists	
...	1. Do not scale from this drawing. 2. This drawing to be read & printed in colour. 3. This drawing is for illustrative purposes only, and not for construction.	Project 63 Netherhall Gardens						
						Drawing Title Indicative Highway Arrangement					111 - 113 Great Portland Street London W1W 6QQ Tel. No. 0207 1000 753	
		Drawn DW	Checked KM	Date 04.03.2024		Scale 1:250	Size A3	Drawing Number 2024-4993-003		Rev		