

156 WEST END LANE

PROPOSED SHOPFRONTS CONDITION 5a

Document No:	0001-A-CTA-DES-114-0001
Revision No:	P00
Date:	25.04.2024
Authored by:	RP
Checked by:	SP

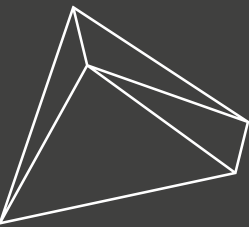


CHAPMAN TAYLOR

astir.

CONTENTS

- 1. Introduction
- 2. Technical sheet 1:50
- 3. West Elevations 1:50
- 4. South Elevations 1:50
- 5. Central Courtyard elevation 1:50
- 6. Drawing Schedule



CHAPMAN TAYLOR

Chapman Taylor LLP is a Limited Liability Partnership
registered in England, number OC302467.
Registered office 10 Eastbourne Terrace, London, W2 6LG.

© Chapman Taylor 2019

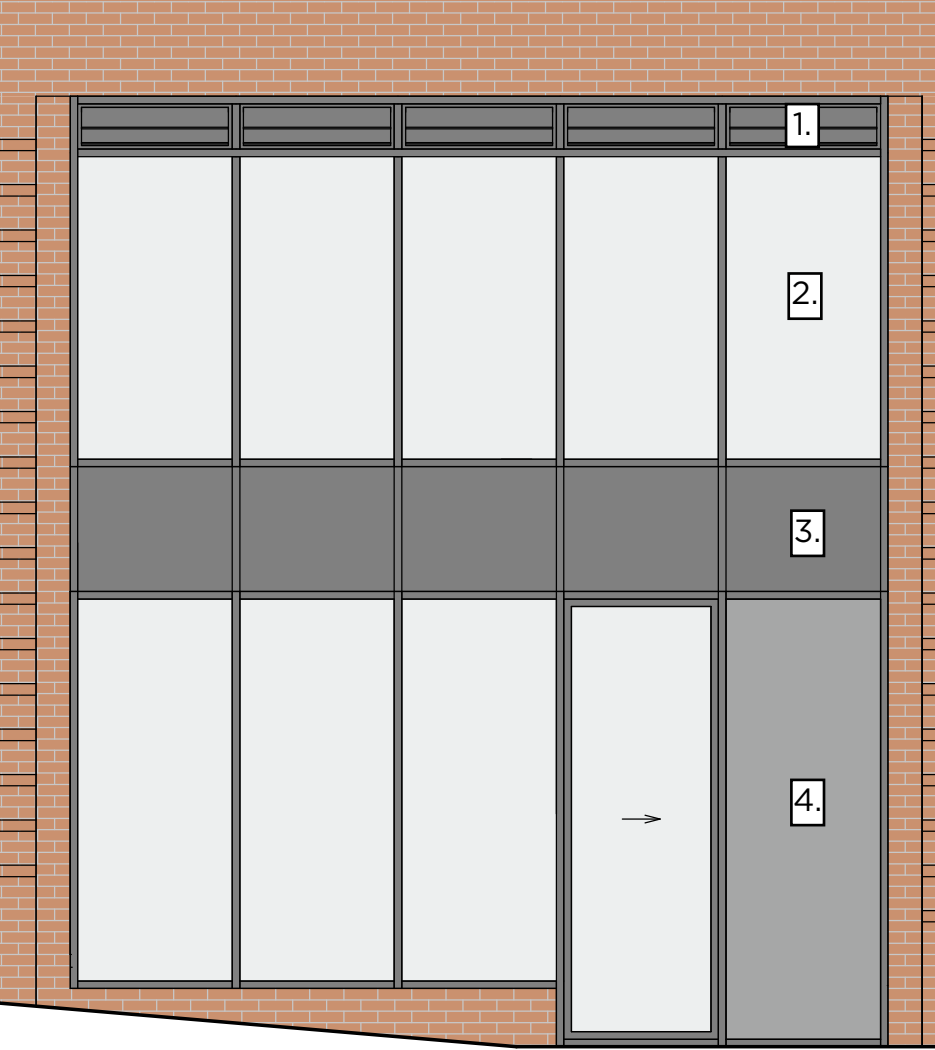
1. INTRODUCTION

Condition 5A Shopfront

This document has been produced for submission of Condition 5A Shopfront. The document includes a typical technical sheet which indicates the different component parts of the Shopfront, including technical detail, performance detail, finish and colour. The subsequent pages show the various elevations at 1:50. These elevations have reference codes added which relate to the technical detail on the initial technical page.

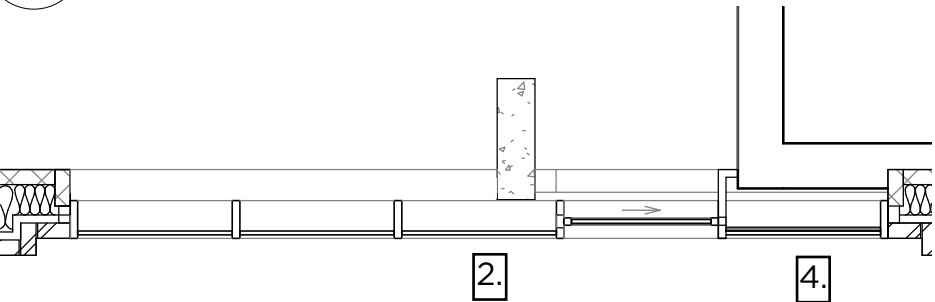
2.0 TECHNICAL INFORMATION 1:50

TYPICAL SHOPFRONT DETAILS AND MATERIALS



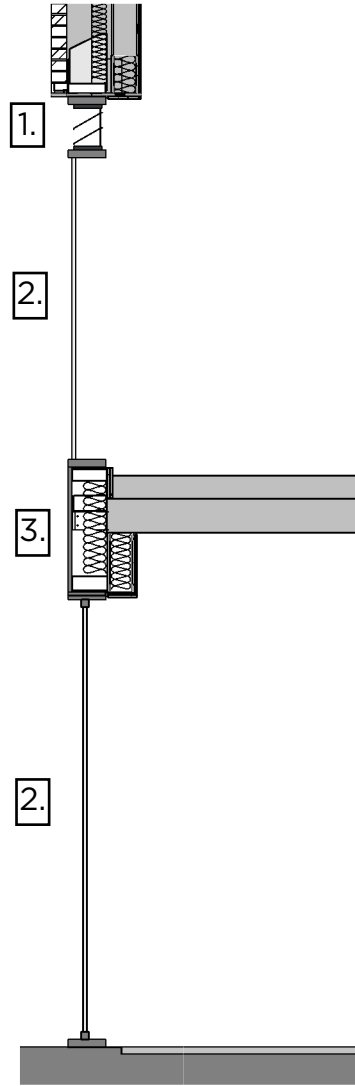
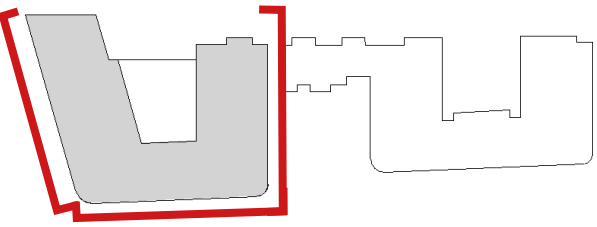
1

Elevation
1 : 50



2

Plan
1 : 50



3

Section
1 : 50

NOTE:
- ALL MATERIALS REFERENCED ARE REPLICATED ON ALL SHOP FRONTS

2.1 MATERIALS

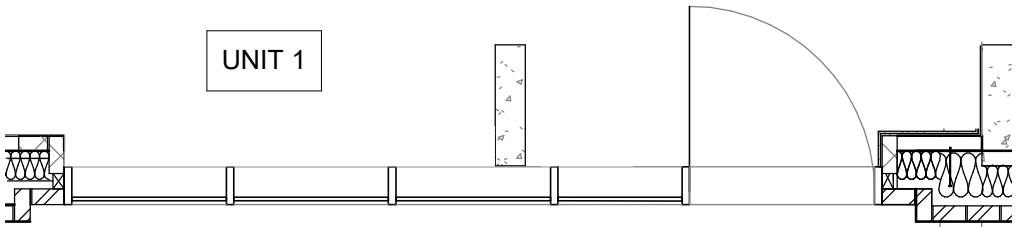
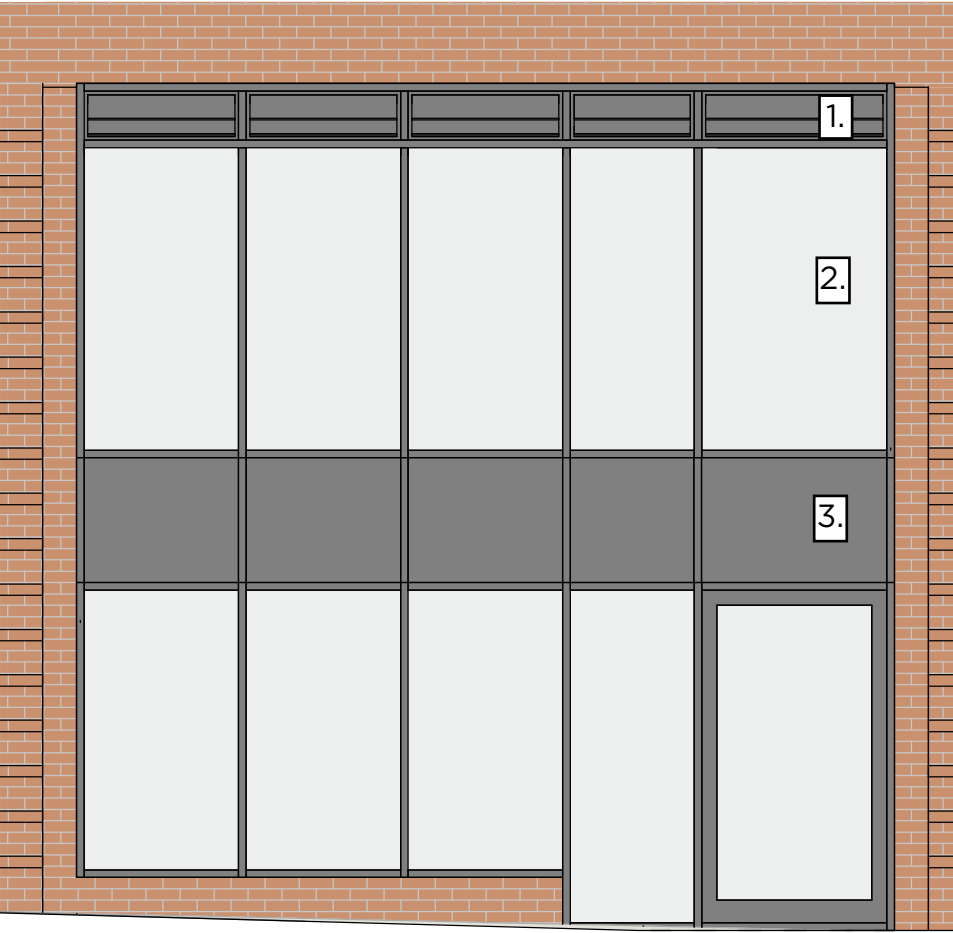
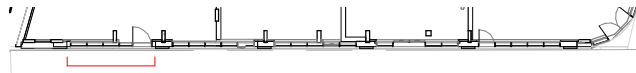
DESCRIPTION

1. GLAZED IN OPEN BACKED PPC ALUMINIUM LOUVRE TO MATCH FRAMES:
 - DUCO 30Z P1 GLAZED IN OPEN BACKED LOUVRE. ANY INTERNAL PLENUMS AND FINISHES TO BE PROVIDED BY OTHERS.
 - PPC TO MATCH FRAMES
2. CLEAR TOUGHENED DOUBLE GLAZED PANEL WITH SOLAR CONTROL COATING:
 - EXTERNAL PANE: 6MM CLEAR TOUGHENED WITH GUARDIAN SN70/35 SOLAR CONTROL COATING
 - CAVITY: 16MM BLACK WARM EDGE SPACER WITH 90% ARGON
 - INTERNAL PANE: 6MM CLEAR TOUGHENED
 - UNITS PROVIDE: 1.0W/M2K CENTREPANE U VALUE AND 0.35 G VALUE AND 0.7LT VALUE
3. PPC ALUMINIUM PANELS PAINTED TO RAL 7016 TO MATCH FRAMES:
 - 25MM CELLOTEX CORE ENCLOSED WITHIN 1.5MM PPC ALUMINIUM PANELS, PAINTED TO RAL 7016 TO MATCH FRAMES
4. FRITTED GLAZING WITH A PPC ALUMINIUM TO RAL 7016 OPAQUE CERAMIC FRIT PANEL BEHIND TO MATCH FRAMES
 - EXTERNAL PANE: 6MM CLEAR TOUGHENED CAVITY: 16MM BLACK WARM EDGE SPACER WITH 90% ARGON
 - INTERNAL PANE: 6MM CLEAR TOUGHENED WITH RAL 7016 CERAMIC FRIT TO FACE 4. BACKED UP INTERNALLY WITH 25MM RWA45 ROCKWOOL. ANY ADDITIONAL FINISHES TO BE PROVIDED BY OTHERS.
 - UNITS PROVIDE: 1.0W/M2K CENTREPANE U VALUE AND 0.35 G VALUE AND 0.7LT VALUE

- ADDITIONAL INFORMATION:**
- SILICONE SEALING: BY AAA, ANTHRACITE IN COLOUR
 - EDPM SEALING: BY AAA
 - MANIFESTATION: IF REQUIRED, BY OTHERS
 - ENTRANCE DOORS - NON PAS24:
 - PROFILES: COMAR 7CD HIGH PERFORMANCE COMMERCIAL DOORS
 - THRESHOLD: 200MM DOUBLE RAMP THRESHOLD
 - HANDLES: NONE
 - LOCKING: 2NO EURO-PROFILE CYLINDERS (SUITED) AND HOOK LOCKS, KEYED EXTERNALLY WITH INTERNAL THUMBTURN. PROVIDED WITH 3NO KEYS
 - LETTERPLATE: NONE
 - DOOR AUTOMATION: ASSA ABLOY SL500 SLIDING DOOR OPERATOR OPERATED BY RADAR SIX POSITION KEYSWITCH (OFF, HOLD OPEN, REDUCED OPENING, EXIT ONLY, AUTOMATIC, RESET)
 - WINDOW WALLING PROFILES: COMAR 9PI HIGH PERFORMANCE WINDOW WALLING WITH FOAM INSERTS TO INCREASE THERMAL EFFICIENCY RAL 7016 30% GLOSS 60M

3.0 TECHNICAL INFORMATION 1:50

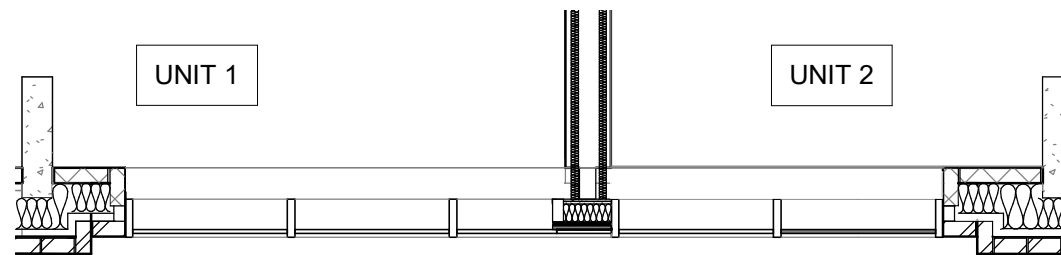
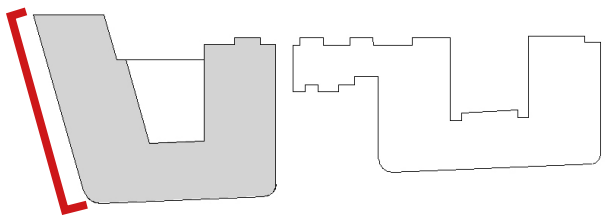
WEST ELEVATION



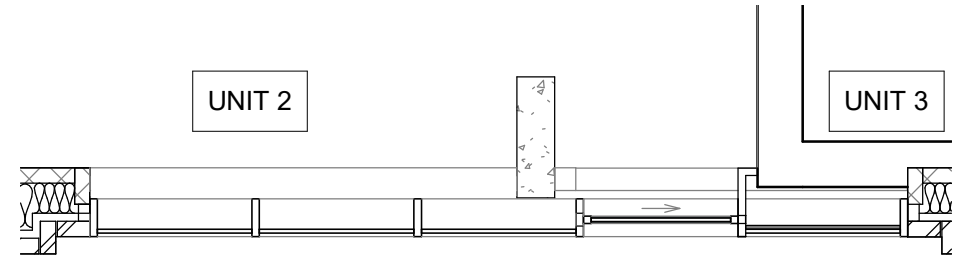
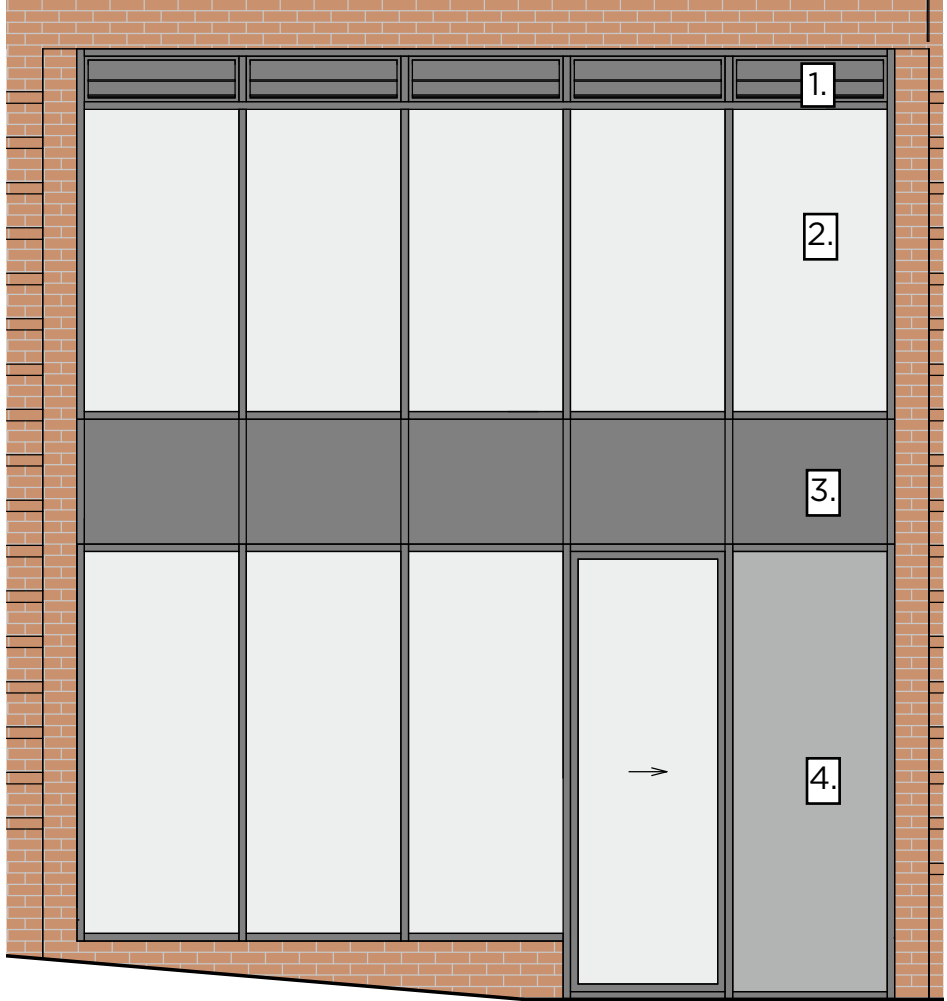
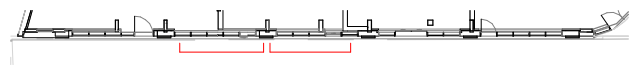
01 Elevation 01
1 : 50

3.1 ELEVATIONS 1:50

WEST ELEVATION



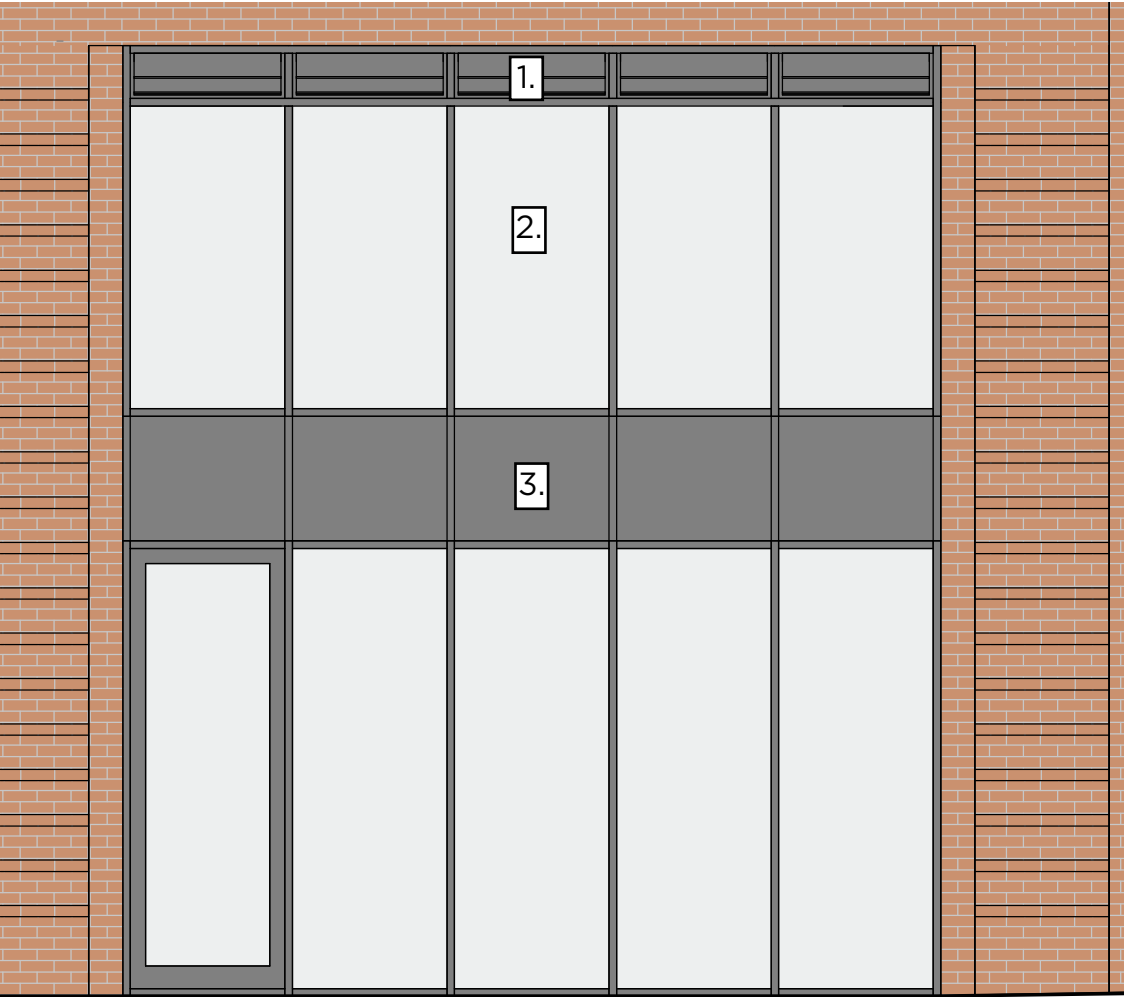
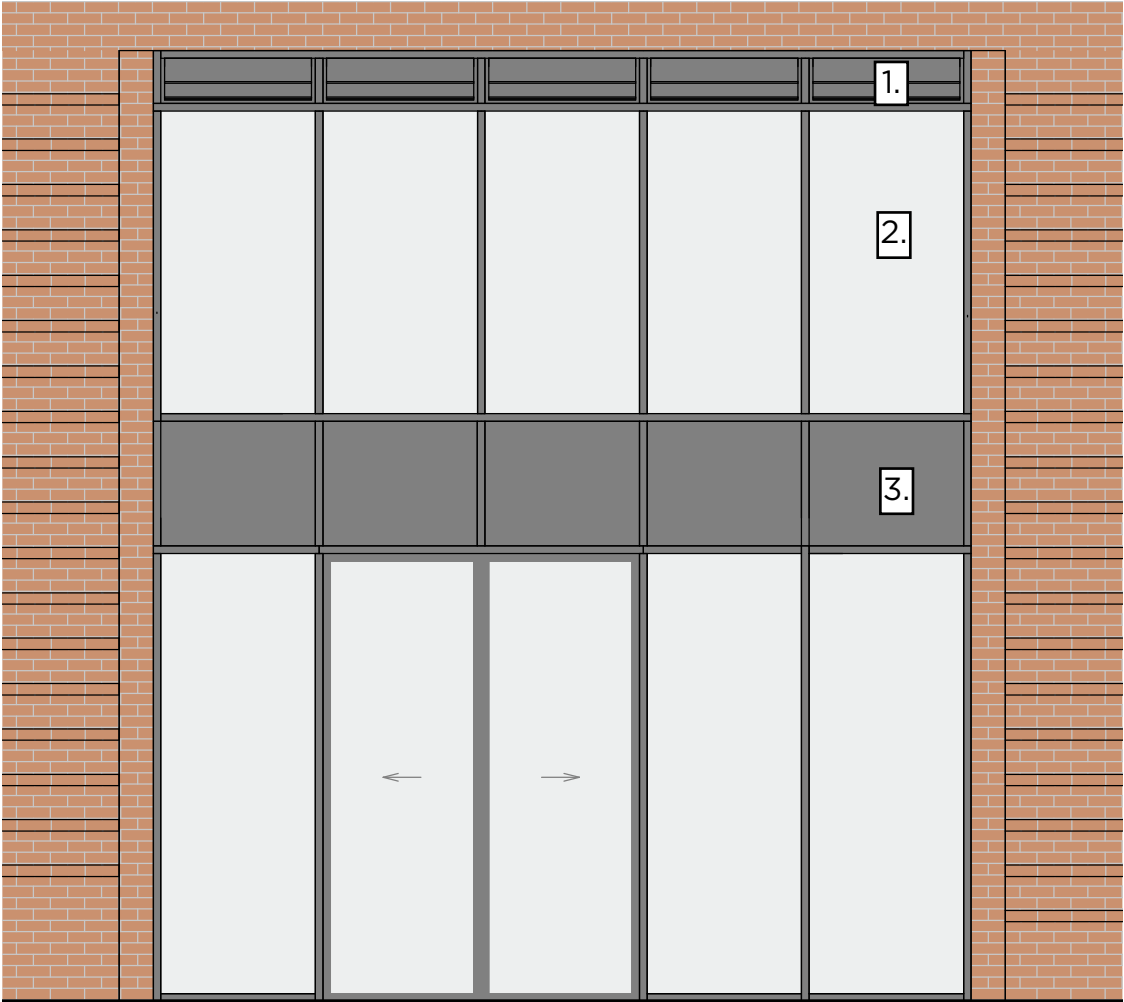
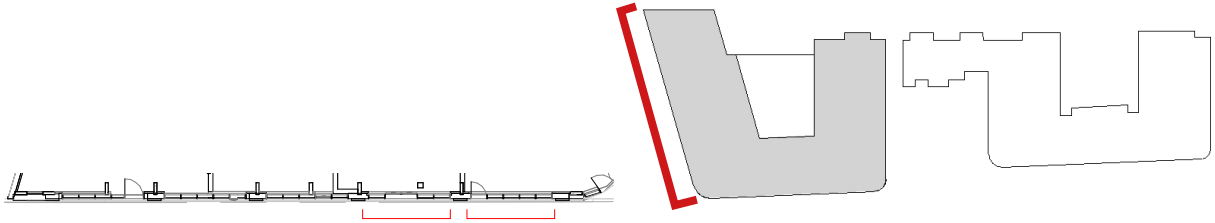
01 Elevation 02
1 : 50



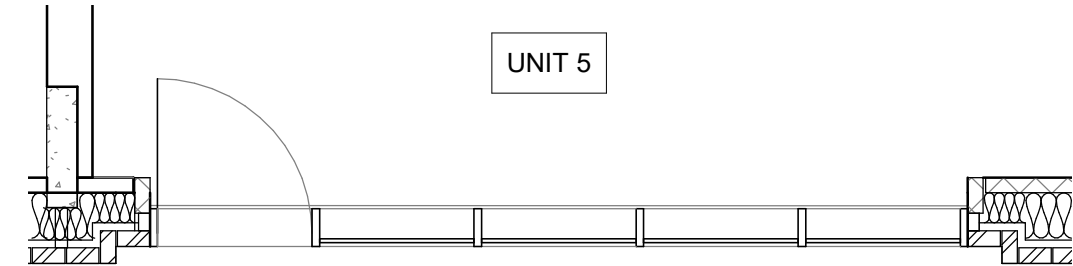
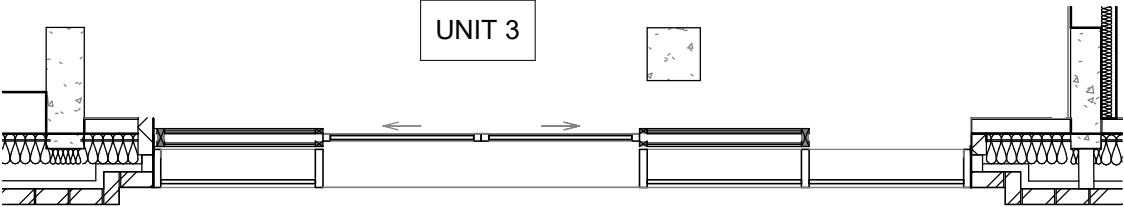
02 Elevation 03
1 : 50

3.2 TECHNICAL INFORMATION 1:50

WEST ELEVATION



PAGE PURPOSELY LEFT BLANK



01

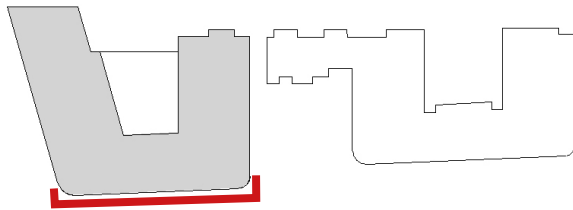
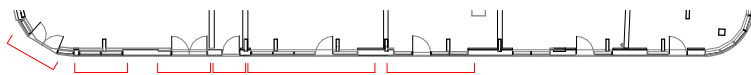
Elevation 04
1 : 50

02

Elevation 05
1 : 50

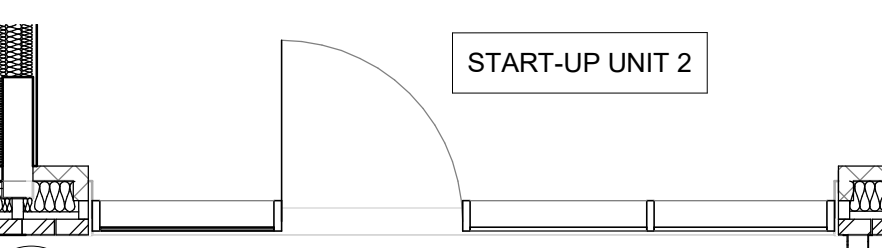
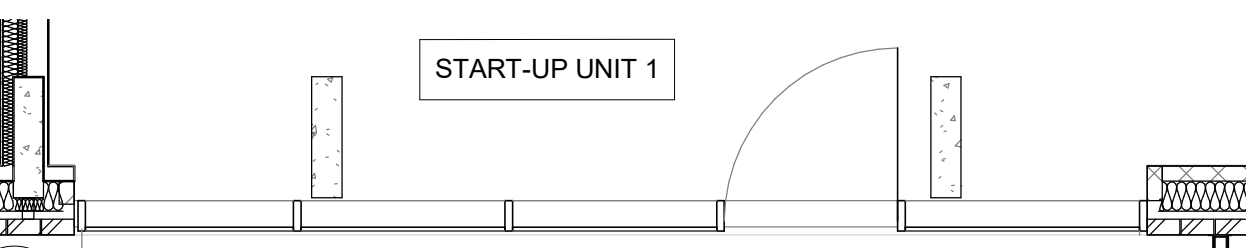
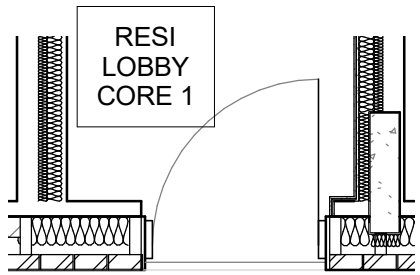
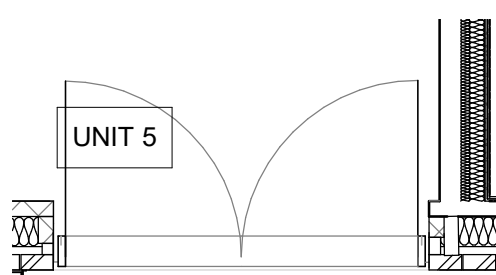
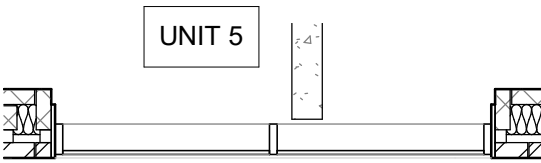
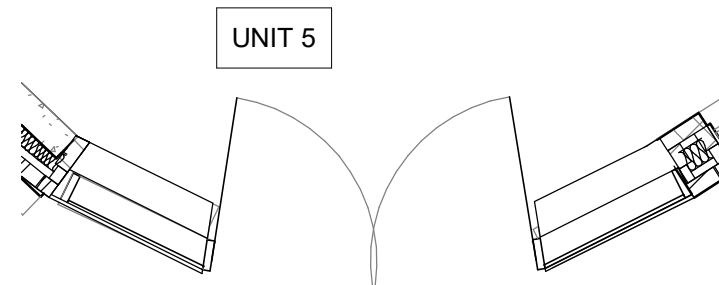
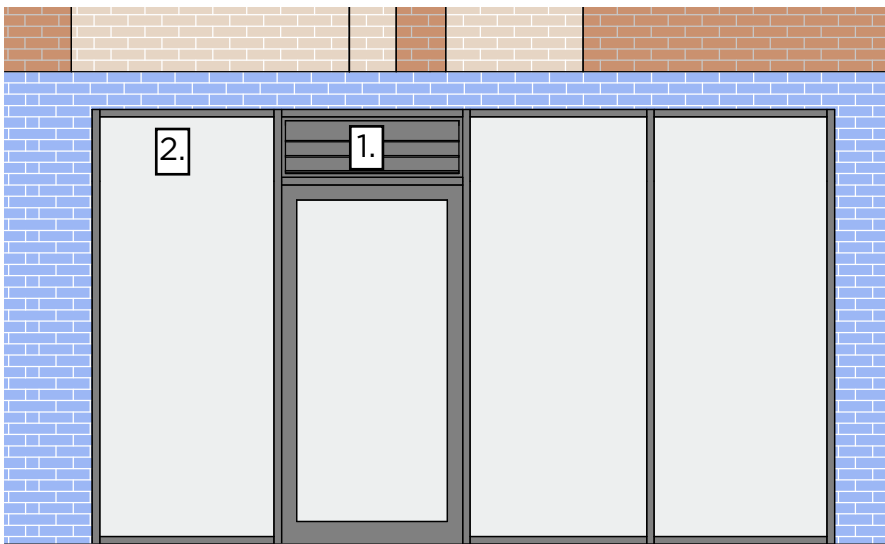
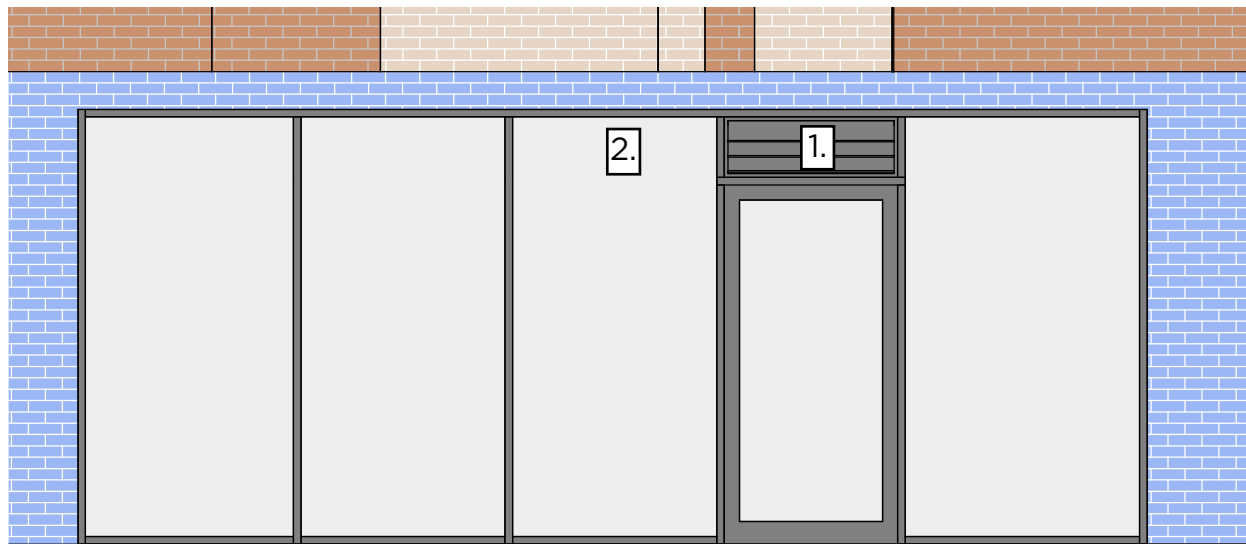
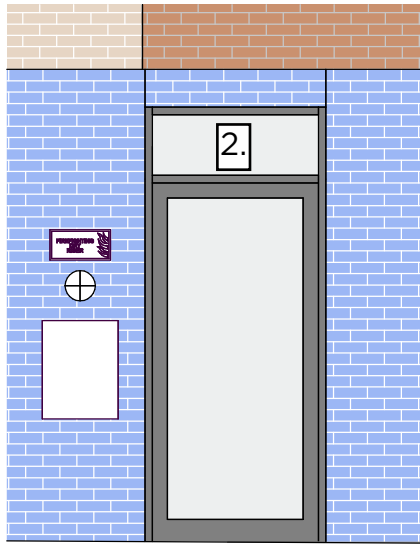
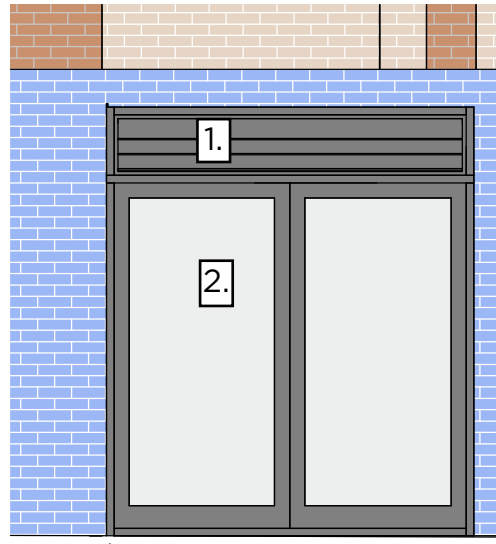
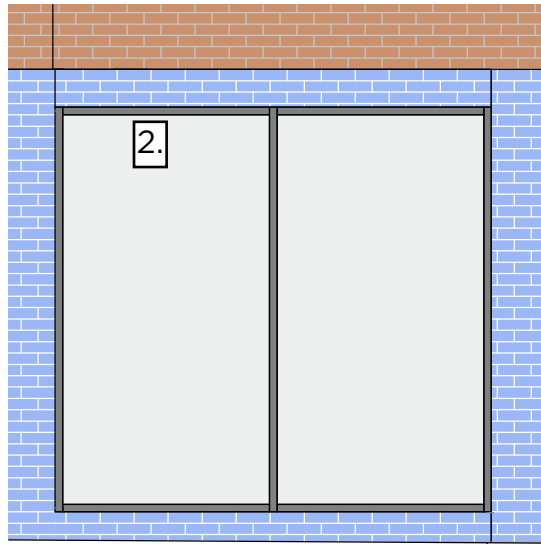
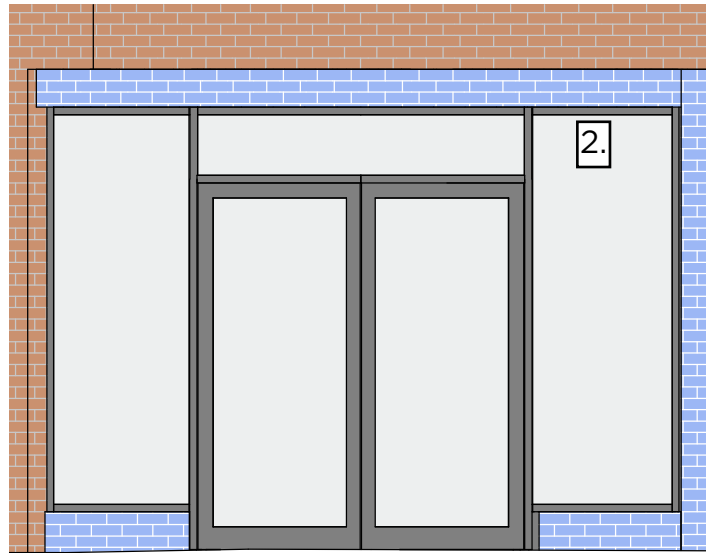
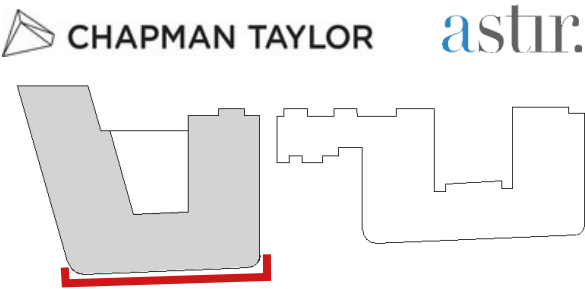
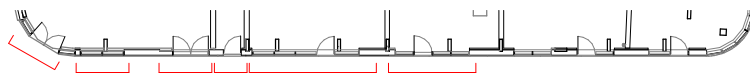
4.0 TECHNICAL INFORMATION 1:50

SOUTH ELEVATION



4.1 ELEVATIONS 1:50

SOUTH ELEVATION



01 Elevation 06
1 : 50

02 Elevation 07
1 : 50

03 Elevation 08
1 : 50

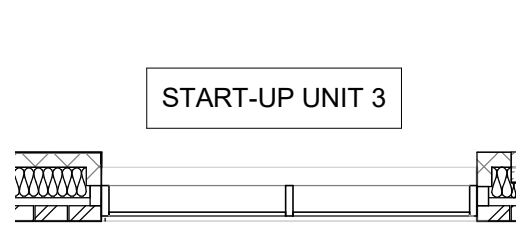
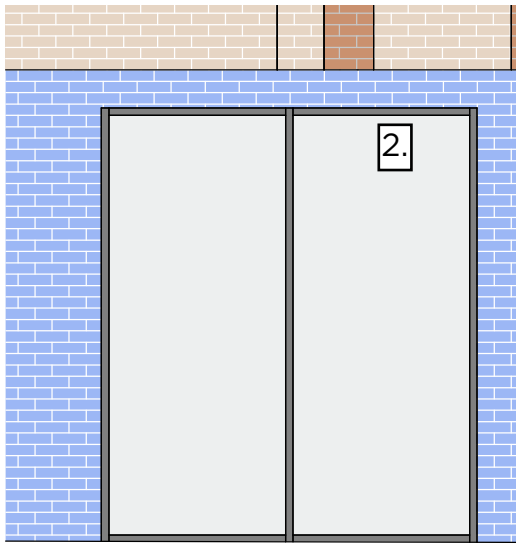
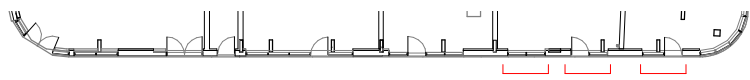
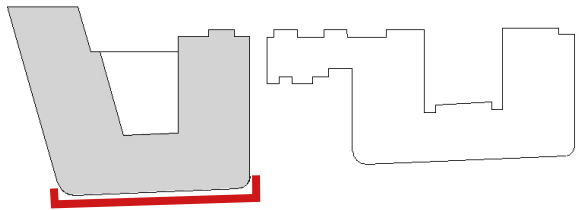
04 Elevation 19
1 : 50

05 Elevation 09
1 : 50

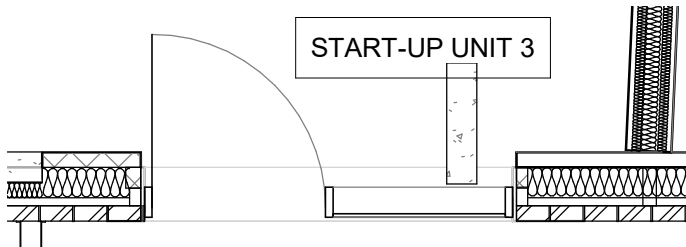
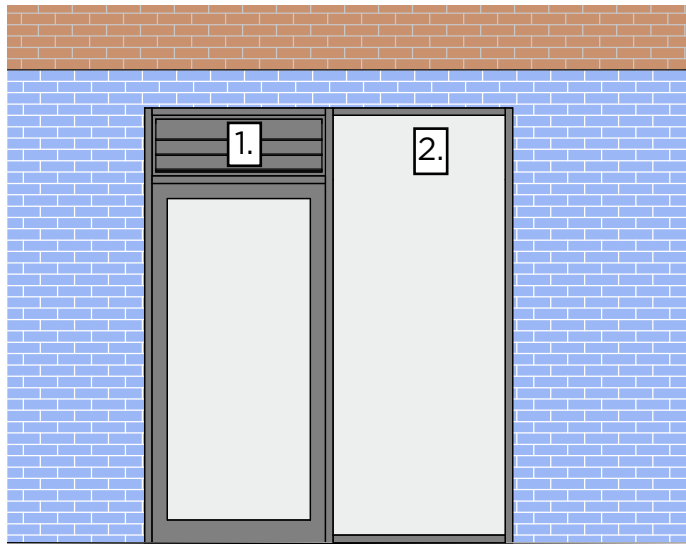
06 Elevation 10
1 : 50

4.2 TECHNICAL INFORMATION 1:50

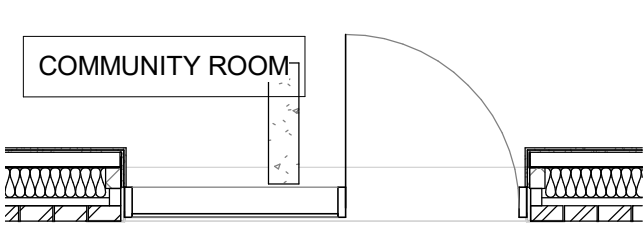
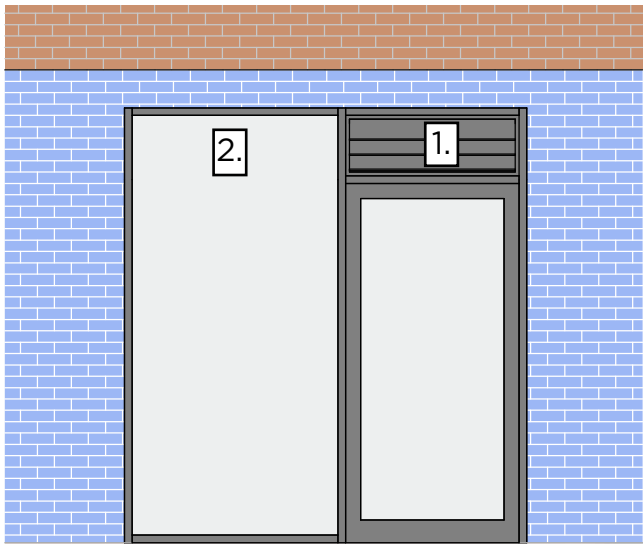
SOUTH ELEVATION



01 Elevation 11
1 : 50



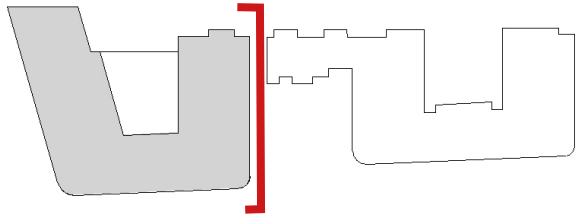
02 Elevation 12
1 : 50



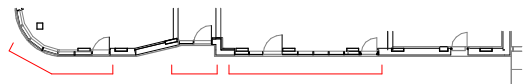
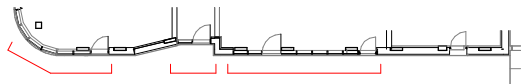
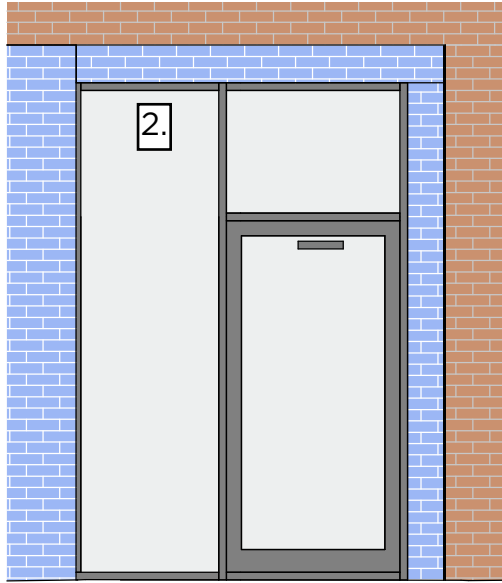
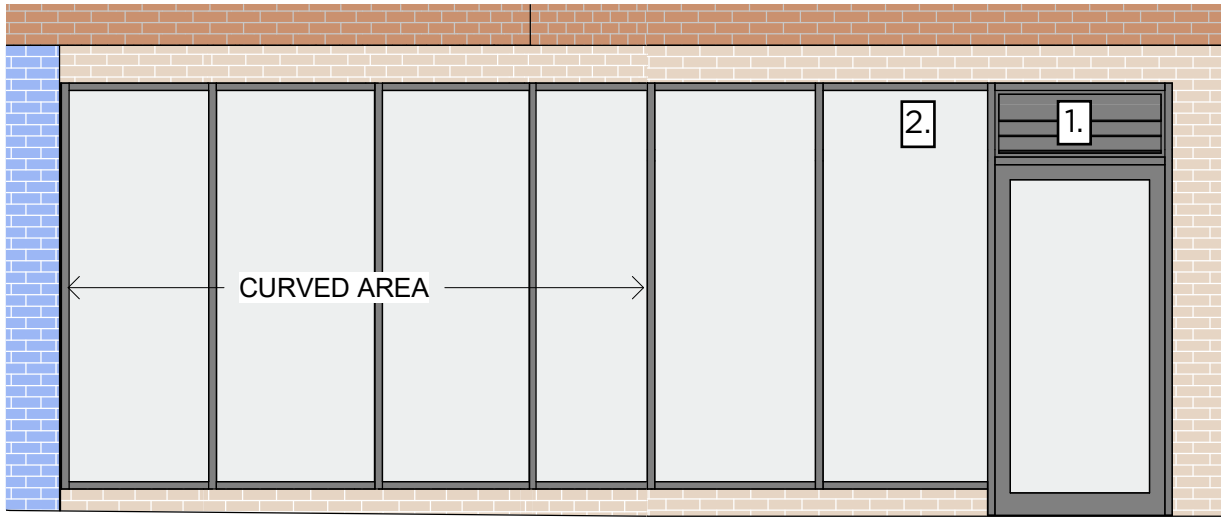
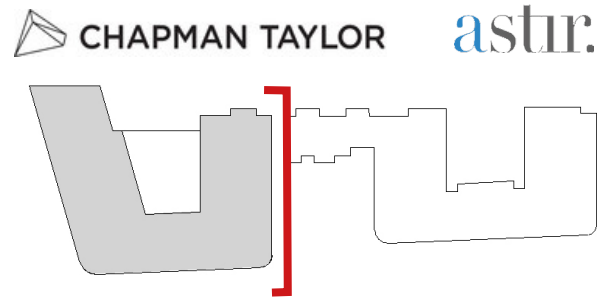
03 Elevation 13
1 : 50

PAGE PURPOSELY LEFT BLANK

5.0 TECHNICAL INFORMATION 1:50
CENTRAL COURTYARD ELEVATION



5.1 TECHNICAL INFORMATION 1:50
CENTRAL COURTYARD ELEVATION



01 Elevation 14
1 : 50

02 Elevation 15
1 : 50

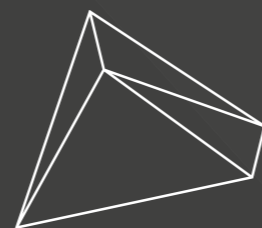
03 Elevation 16
1 : 50

6.0 DRAWING SCHEDULE

APPENDIX

DRAWING TITLE	DRAWING NUMBER	REVISION
WEST BLOCK Typical Curtain Wall Detail Drawing	0001-A-CTA-SKE-98-ZZ-5670	P01
WEST BLOCK Curtain Wall Drawing 1/6	0001-A-CTA-SKE-98-ZZ-5671	P01
WEST BLOCK Curtain Wall Drawing 2/6	0001-A-CTA-SKE-98-ZZ-5672	P01
WEST BLOCK Curtain Wall Drawing 3/6	0001-A-CTA-SKE-98-ZZ-5673	P01
WEST BLOCK Curtain Wall Drawing 4/6	0001-A-CTA-SKE-98-ZZ-5674	P01
WEST BLOCK Curtain Wall Drawing 5/6	0001-A-CTA-SKE-98-ZZ-5675	P01
WEST BLOCK Curtain Wall Drawing 6/6	0001-A-CTA-SKE-98-ZZ-5676	P01

PAGE PURPOSELY LEFT BLANK



CHAPMAN TAYLOR
www.chapmantaylor.com