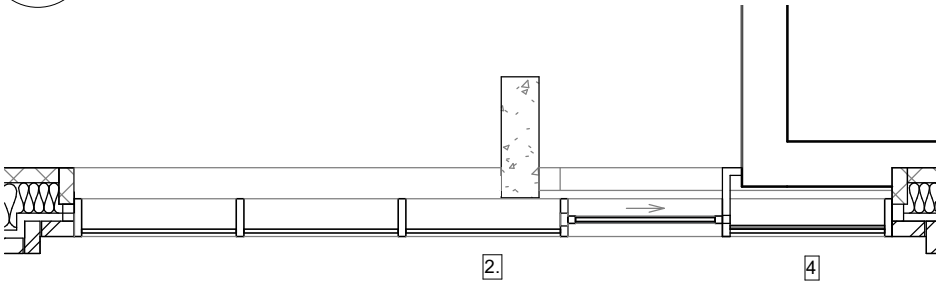
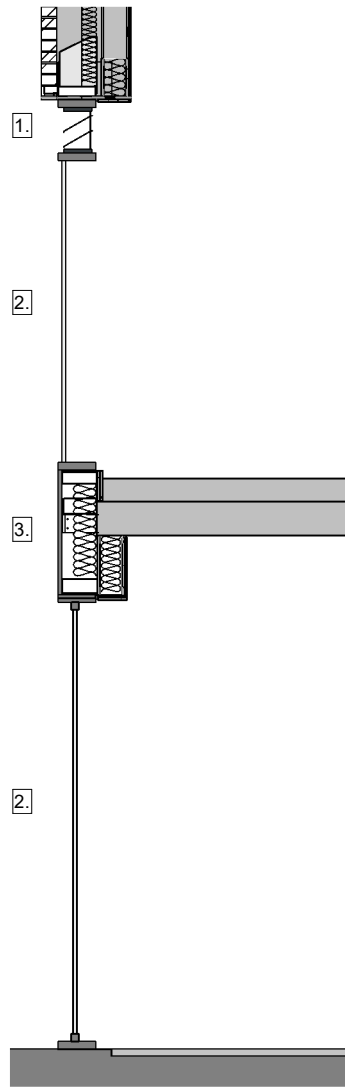


1 Elevation  
1 : 50



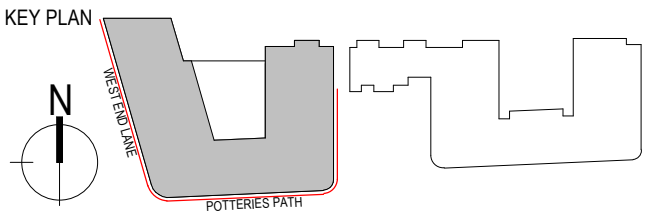
2 Plan  
1 : 50



3 Section  
1 : 50

1. GLAZED IN OPEN BACKED PPC ALUMINIUM LOUVRE TO MATCH FRAMES:  
- DUCO 30Z P1 GLAZED IN OPEN BACKED LOUVRE. ANY INTERNAL PLENUMS AND FINISHES TO BE PROVIDED BY OTHERS.  
- PPC TO MATCH FRAMES
2. CLEAR TOUGHENED DOUBLE GLAZED PANEL WITH SOLAR CONTROL COATING:  
- EXTERNAL PANE: 6MM CLEAR TOUGHENED WITH GUARDIAN SN70/35 SOLAR CONTROL COATING  
- CAVITY: 16MM BLACK WARM EDGE SPACER WITH 90% ARGON  
- INTERNAL PANE: 6MM CLEAR TOUGHENED  
- UNITS PROVIDE: 1.0W/M2K CENTREPANE U VALUE AND 0.35 G VALUE AND 0.7LT VALUE
3. PPC ALUMINIUM PANELS PAINTED TO RAL 7016 TO MATCH FRAMES:  
- 25MM CELLOTEX CORE ENCLOSED WITHIN 1.5MM PPC ALUMINIUM PANELS, PAINTED TO RAL 7016 TO MATCH FRAMES
4. FRITTED GLAZING WITH A PPC ALUMINIUM TO RAL 7016 OPAQUE CERAMIC FRIT PANEL BEHIND TO MATCH FRAMES  
- EXTERNAL PANE: 6MM CLEAR TOUGHENED CAVITY: 16MM BLACK WARM EDGE SPACER WITH 90% ARGON  
- INTERNAL PANE: 6MM CLEAR TOUGHENED WITH RAL 7016 CERAMIC FRIT TO FACE 4. BACKED UP INTERNALLY WITH 25MM RWA45 ROCKWOOL. ANY ADDITIONAL FINISHES TO BE PROVIDED BY OTHERS.  
- UNITS PROVIDE: 1.0W/M2K CENTREPANE U VALUE AND 0.35 G VALUE AND 0.7LT VALUE

- ADDITIONAL INFORMATION:**
- SILICONE SEALING: BY AAA, ANTHRACITE IN COLOUR
  - EDPM SEALING: BY AAA
  - MANIFESTATION: IF REQUIRED, BY OTHERS
  - ENTRANCE DOORS - NON PAS24:
  - PROFILES: COMAR 7CD HIGH PERFORMANCE COMMERCIAL DOORS
  - THRESHOLD: 200MM DOUBLE RAMP THRESHOLD
  - HANDLES: NONE
  - LOCKING: 2NO EURO-PROFILE CYLINDERS (SUITED) AND HOOK LOCKS, KEYED EXTERNALLY WITH INTERNAL THUMBTURN.
  - PROVIDED WITH 3NO KEYS
  - LETTERPLATE: NONE
  - DOOR AUTOMATION: ASSA ABLOY SL500 SLIDING DOOR OPERATOR OPERATED BY RADAR
  - SIX POSITION KEYSWITCH (OFF, HOLD OPEN, REDUCED OPENING, EXIT ONLY, AUTOMATIC, RESET)
  - WINDOW WALLING PROFILES: COMAR 9PI HIGH PERFORMANCE WINDOW WALLING WITH FOAM INSERTS TO INCREASE THERMAL EFFICIENCY RAL 7016 30% GLOSS 60M



**NOTES**

ANY DISCREPANCIES THAT ARE, OR BECOME APPARENT SHOULD BE REPORTED TO CHAPMAN TAYLOR. AREAS INDICATED ARE APPROXIMATE GROSS INTERNAL AREA. THEY RELATE TO THE LIKELY AREAS OF THE BUILDING AT THE CURRENT STAGE OF DESIGN. ANY DECISIONS TO BE MADE ON THE BASIS OF THESE PREDICTIONS, WHETHER AS TO PROJECT VIABILITY, PRE-LETTING, LEASE AGREEMENTS, OR THE LIKE, SHOULD INCLUDE DUE ALLOWANCE FOR THE INCREASES AND DECREASES INHERENT IN THE DESIGN DEVELOPMENT AND BUILDING PROCESS.  
© COPYRIGHT CHAPMAN TAYLOR 2021

**NOTE:**  
All materials referenced are replicated on all shop fronts

P01	24.04.24	RP	(WB-211) FIRST ISSUE Planning Shopfronts	SP
-----	----------	----	--	----

REV	DATE	BY	DESCRIPTION	CHK
-----	------	----	-------------	-----



STRUCTURAL ENGINEER



SERVICES ENGINEER



CLIENT

PROJECT

**WEST END LANE**

156 West End Lane  
West Hampsted  
London NW6 1SD

ARCHITECT



**CHAPMAN TAYLOR**  
GLOBAL ARCHITECTS & MASTERPLANNERS

**LONDON STUDIO**  
10 Eastbourne Terrace  
London W2 6LG  
United Kingdom  
T +44 (0)20 7371 3000  
E london@chapmantaylor.com  
www.chapmantaylor.com

DRAWING TITLE

**WEST BLOCK**  
**Typical Curtain Wall**  
**Detail Drawing**

Scale 1:50		@ A3						
INTERNAL JOB NO		ISSUE DATE		STATUS		DRAWN BY		CHECKED BY
C340WEL		24.04.2024		PLANNING		RP		SP
PROJECT NO.	ROLE	ORIGINATOR	TYPE	SERIES	LEVEL	NUMBER	REVISION	
0001	A	CTA	SKE	98	ZZ	5670	P01	