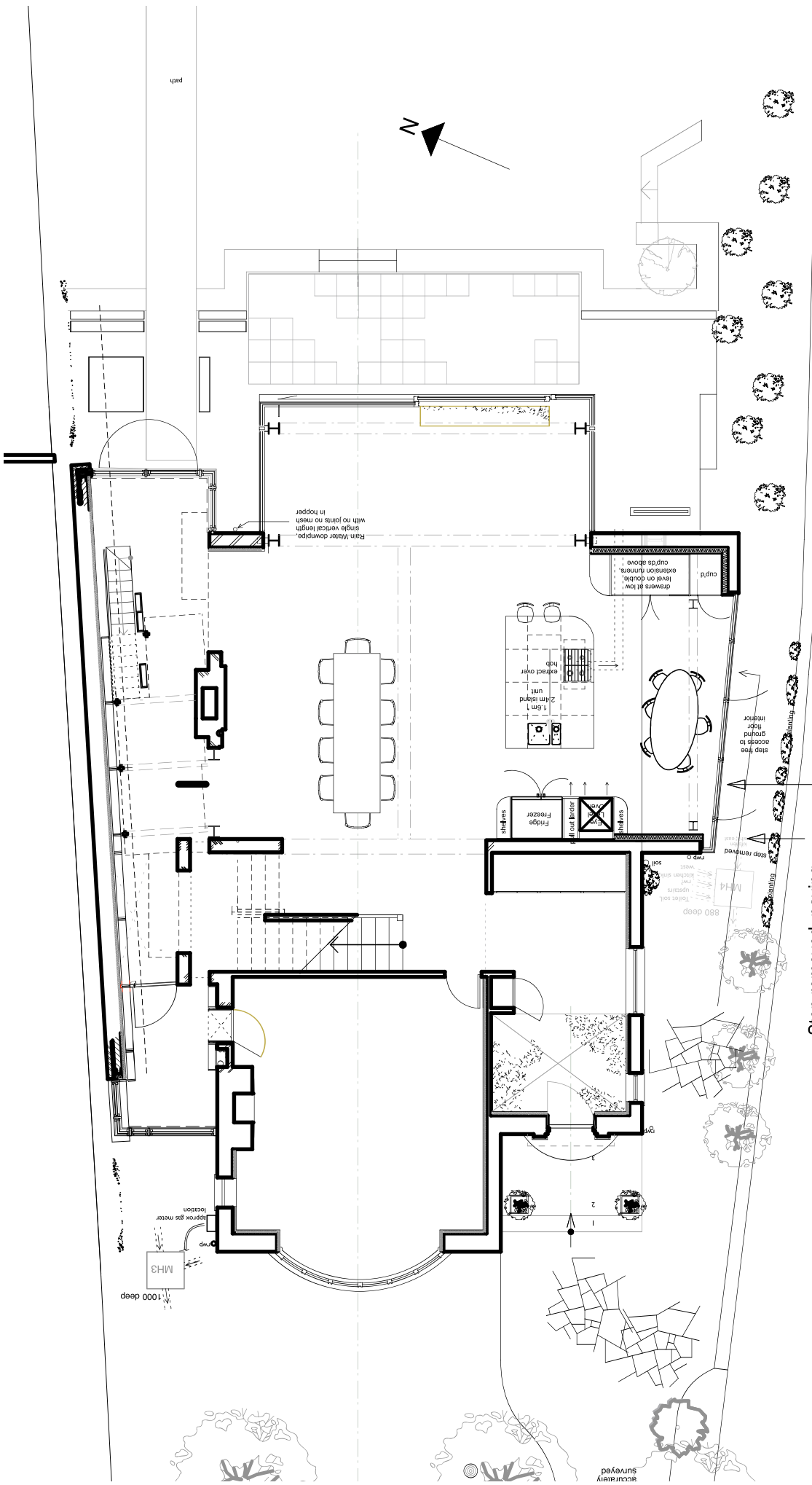


Step removed, paving relaid as an even universal access ramp and replaced with permeable paving

Step removed, paving relaid as an even universal access ramp and replaced with permeable paving

step free access to ground floor interior

for:	8 Robin grove Holly Lodge London, N6 6NY
dwg no:	Proposed Ground floor plan
scale:	1:200 @ A4
revision:	
dated:	2024-04-24
providers to measure fully on site prior to manufacture, all drawings copyright architects&designers	
0208 960 2344 andrew@kingston.com Studio 202, Buspace London W10 5AP	

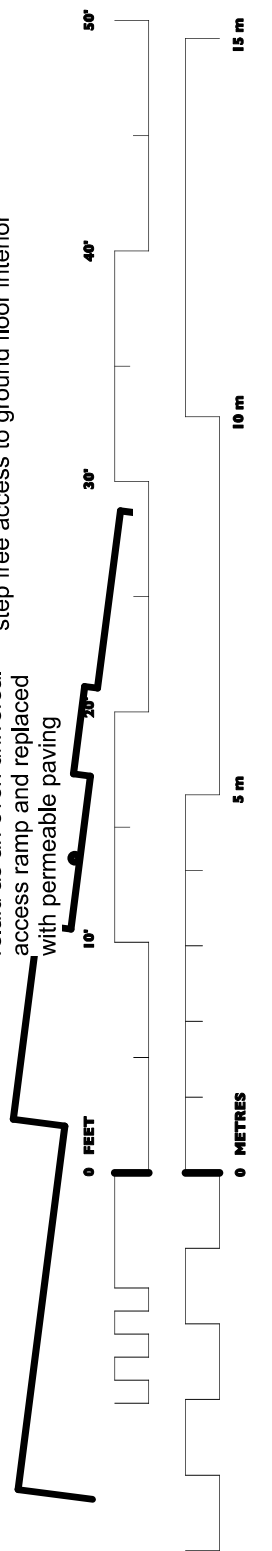


Step removed, paving relaid as an even universal access ramp and replaced with permeable paving

step free access to ground floor interior

step removed

step removed

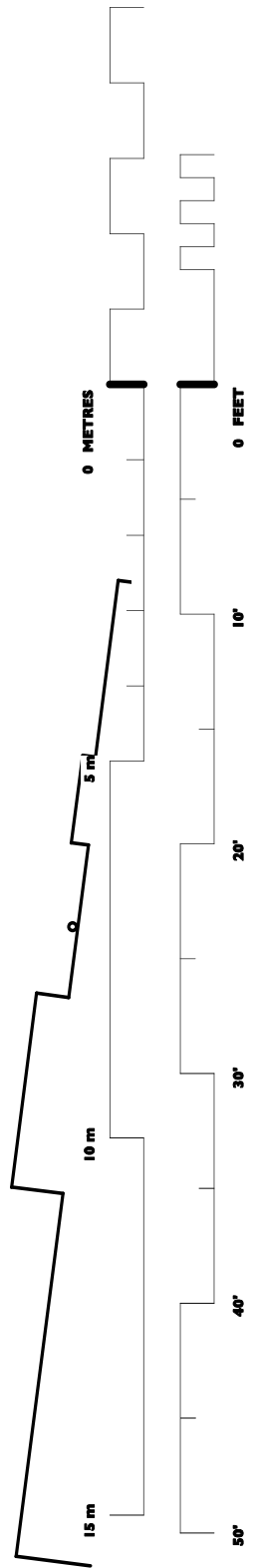
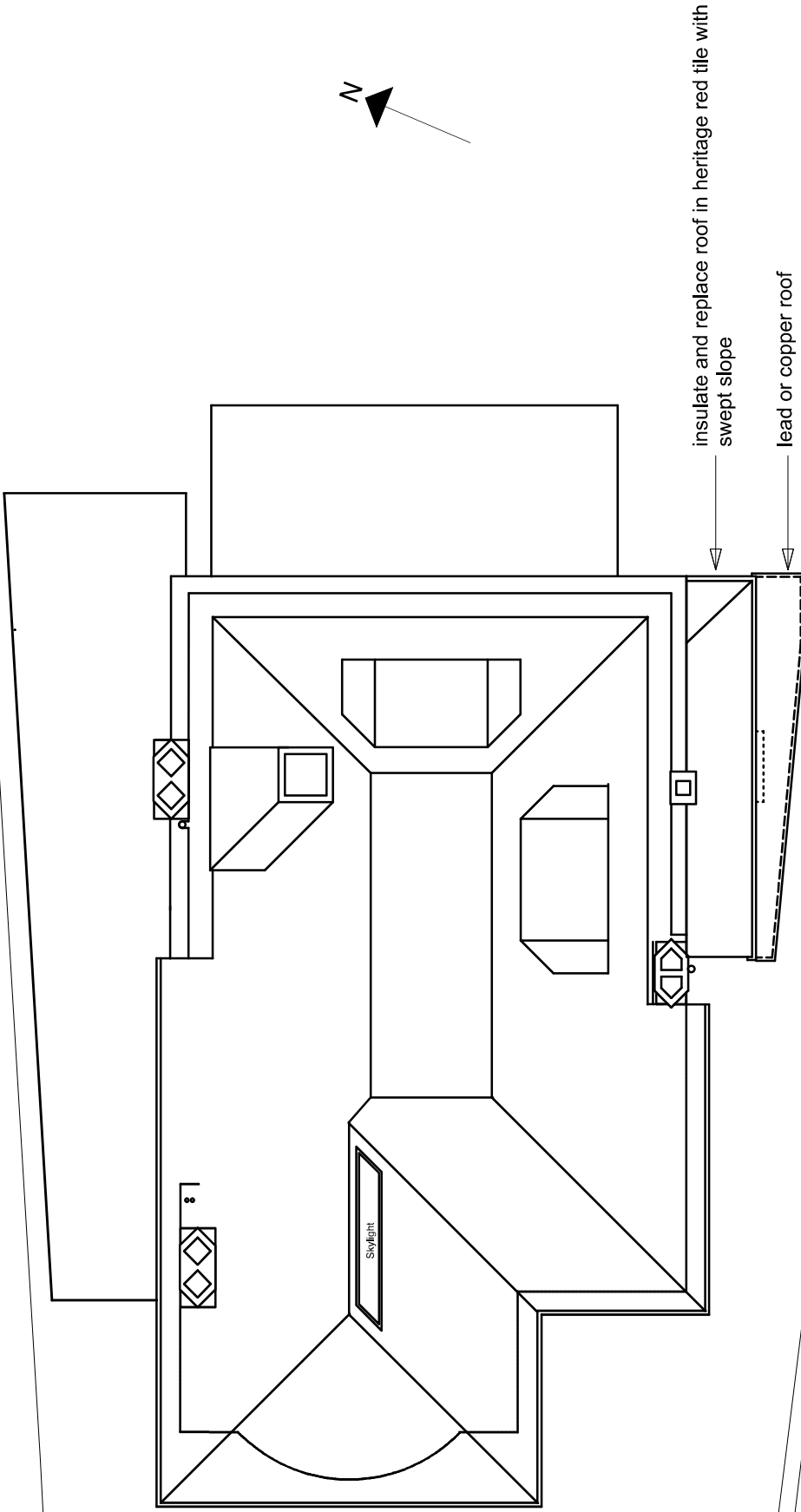


for: Robin Grove
Holly Lodge
London, N6 6NY
dwg no: Proposed
Ground floor plan

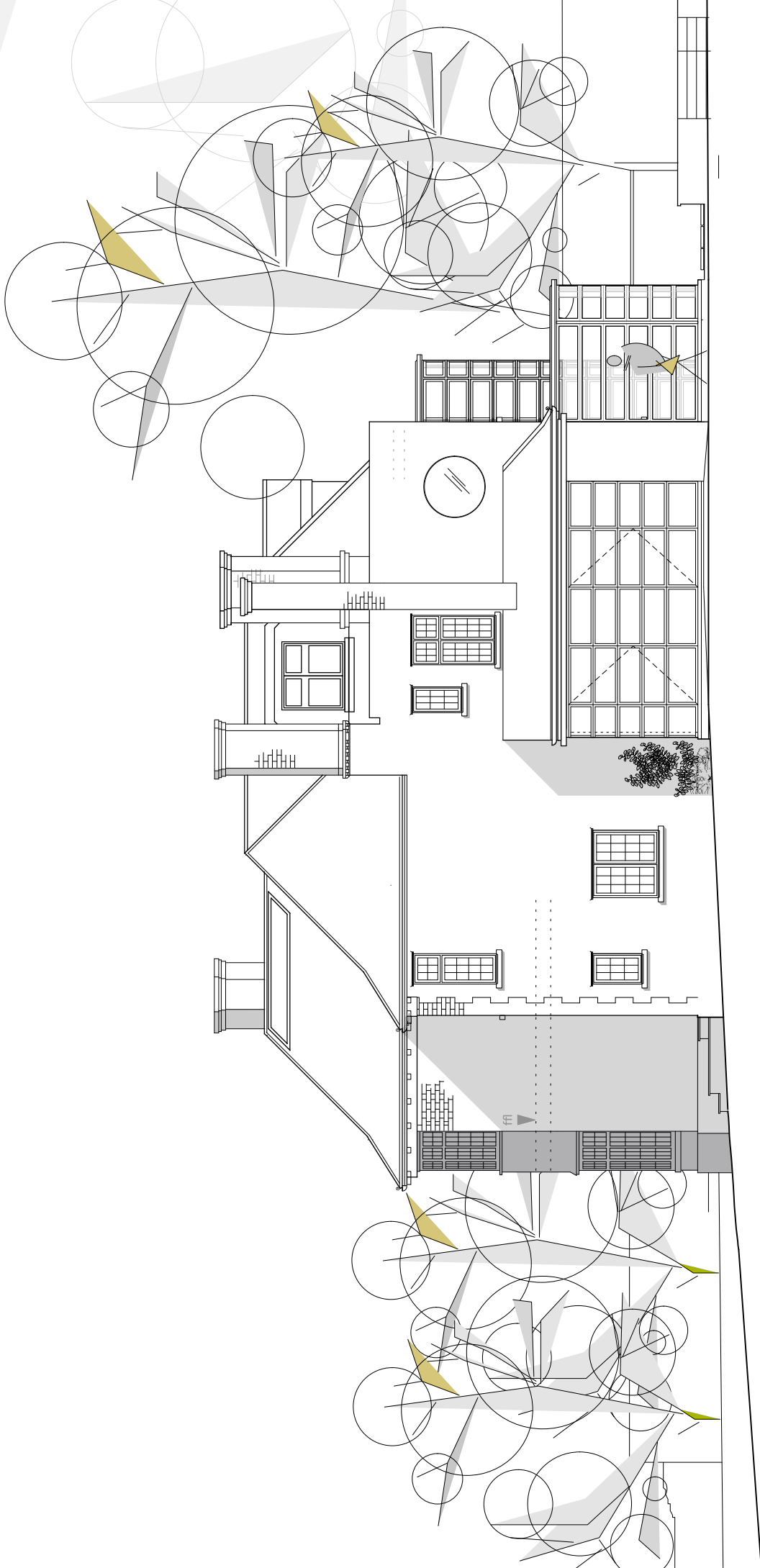
scale: 1:100 @ A4
revision:

dated: 2024-04-24
provides to measure fully on site prior to manufacture, all drawings copyright

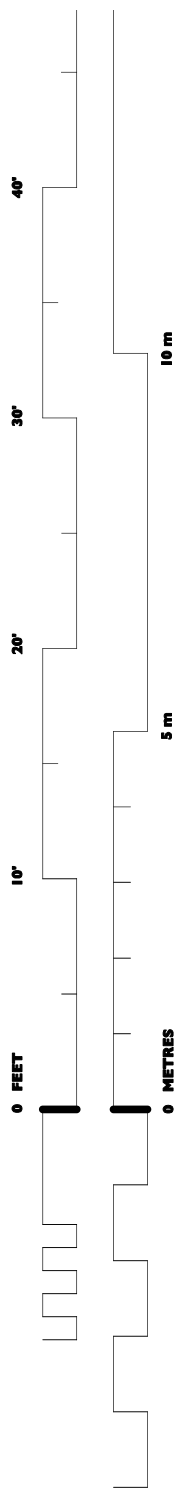
0208 960 2344
andw@kingston.com
Studio 202, Buspice
London W10 3AP
architectsdesigners



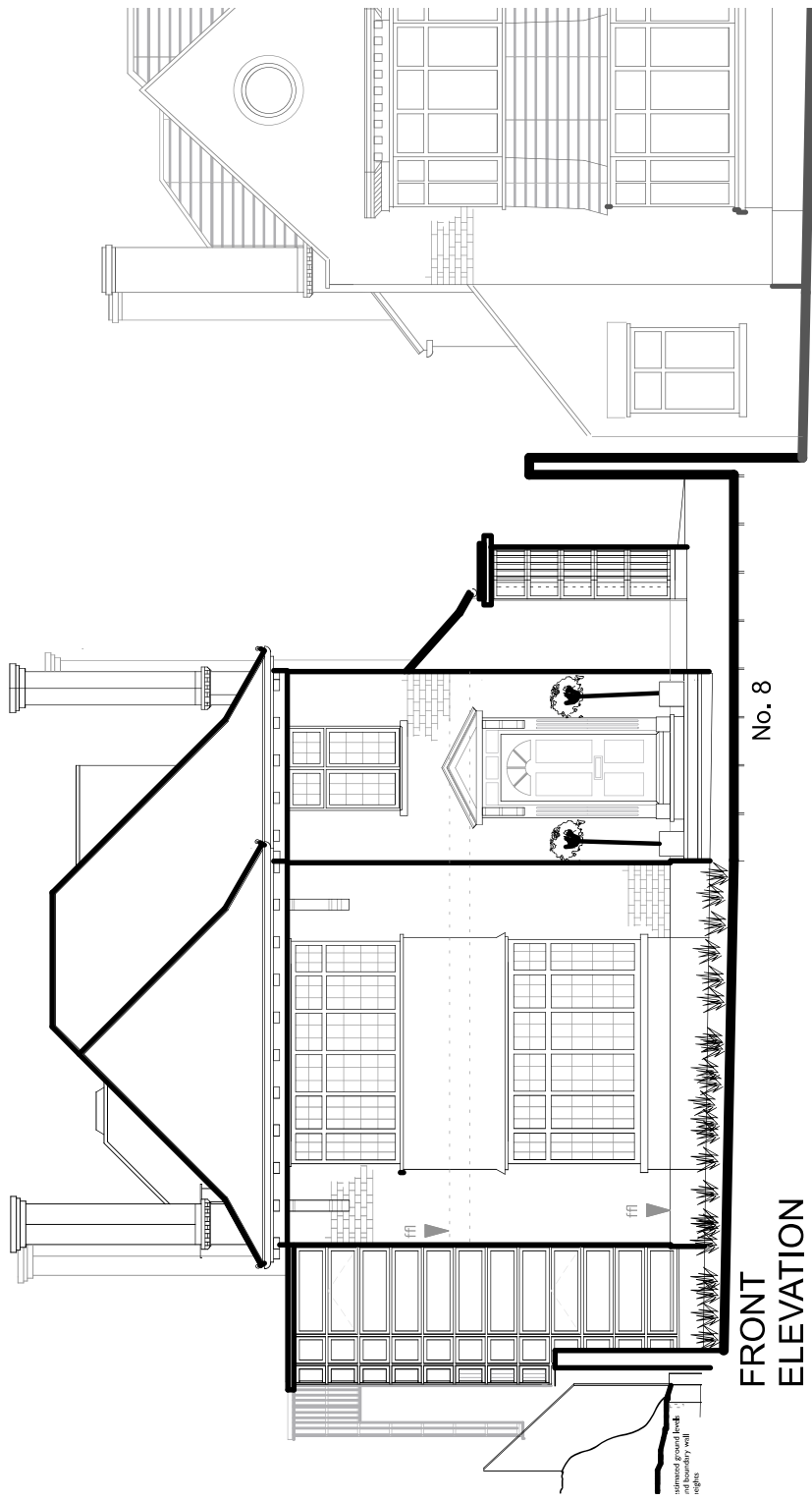
for:	8 Robin grove
	Holly Lodge
	London, N6 6NY
dwg no:	Proposed
	Roof Plan
scale:	1:100 @ A4
revision:	
dated:	2024-04-24
provides to measure fully on site prior to manufacture, all drawings copyright 0208 960 2344 Studio 202, Buspace London W10 5AP andrew@kingdon.com architects&designers	



SOUTH ELEVATION

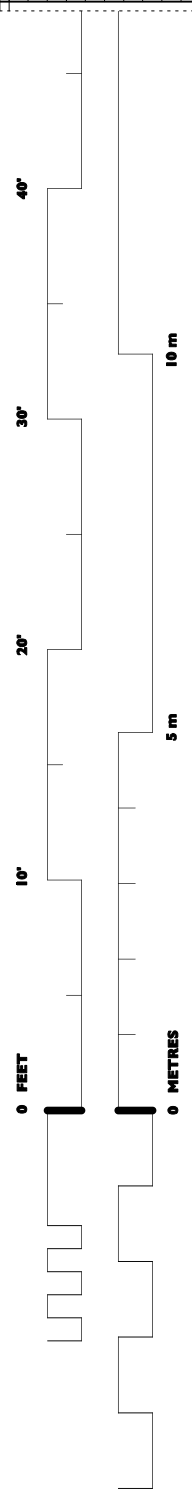


for: 8 Robin Grove
 Holly Lodge
 London, N6 6NY
 dwg not Proposed
 South Elevation
 scale: 1:100 @ A4
 revision 1
 dated: 2024-04-24
 provides to measure fully on site prior to manufacture, all drawings copyright
 architects&designers
 Studio 202, Buspace
 London W10 5AP
 0208 960 2344
 andrew@kingington.com

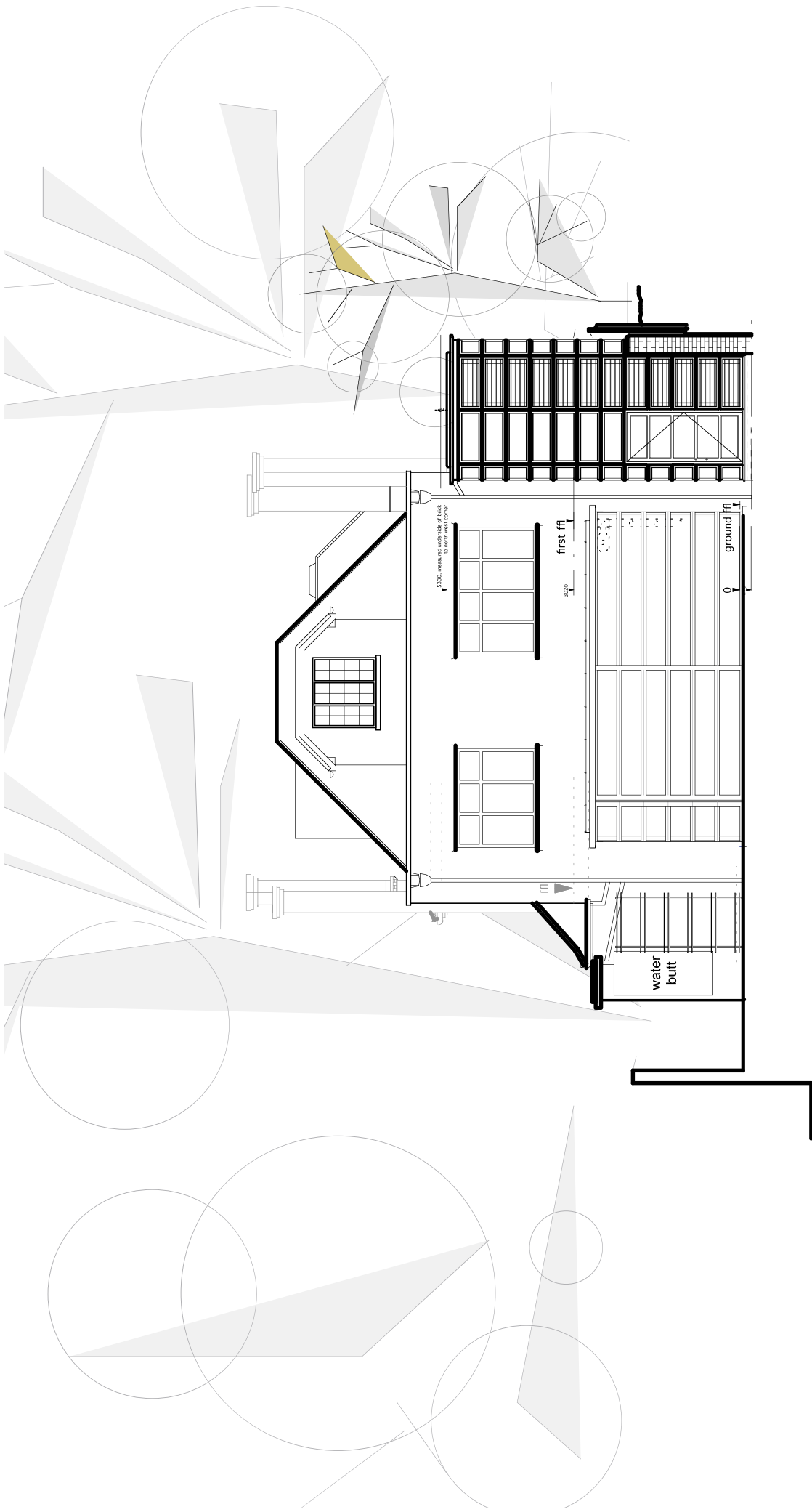


**FRONT
ELEVATION**

No. 8



for	8 Robin grove Holly Lodge London, N6 8NY
dwg. no.	Proposed Front Elevation
scale	1:100 @ A4
revision	
dated	2024-04-24
providers to measure fully on site prior to manufacture, all drawings copyright architects&designers	
0208 960 2344 andrew@kingdon.com London W10 5AP Studio 202, Buspace	



No 6

No 8

REAR ELEVATION ^{40°}

20'

10'

0 FEET

5 m

0 METRES

10 m

for: 8 Robin grove Holly Lodge London, N6 2NY	0208 960 2344 andrew@kingston.com Studio 202, Bussey London W10 5AP architects&designers
dwg: not Proposed Rear Elevation	
scale: 1:100 @ A4 revision:	
dated: 2024-04-24	
providers to measure fully on site prior to manufacture, all drawings copyright	