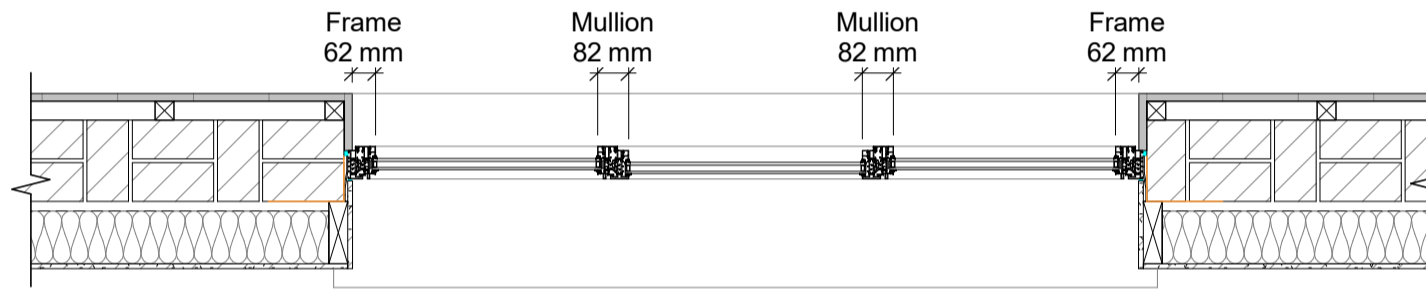
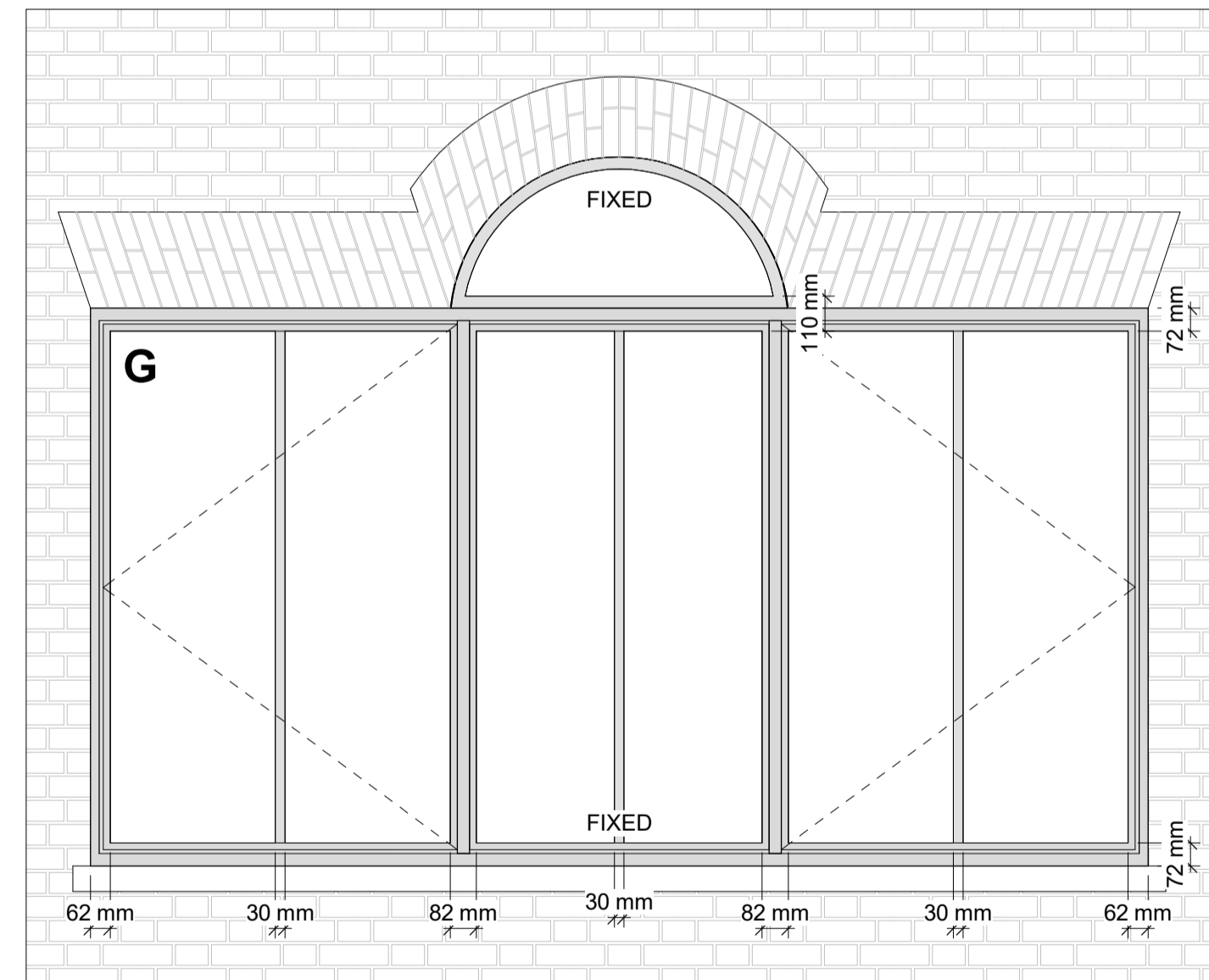


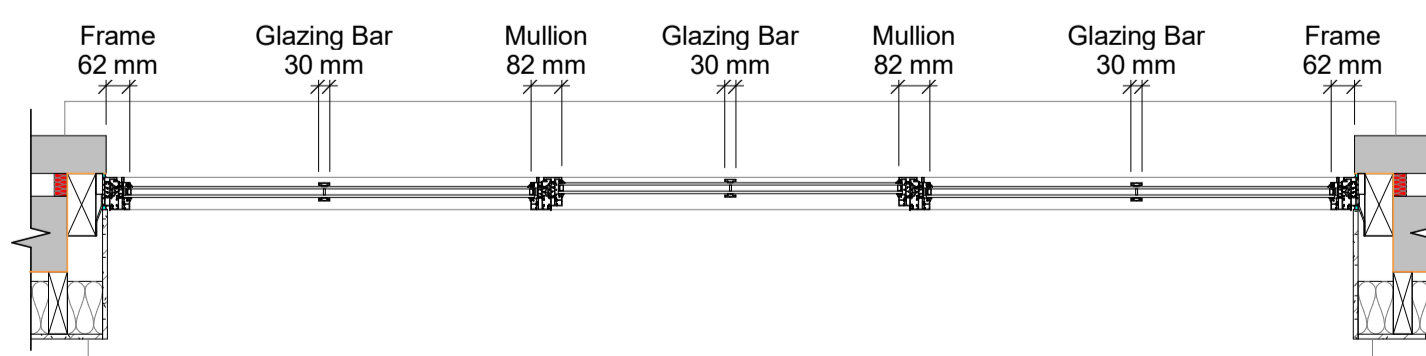
Elevation  
Detail 1:20



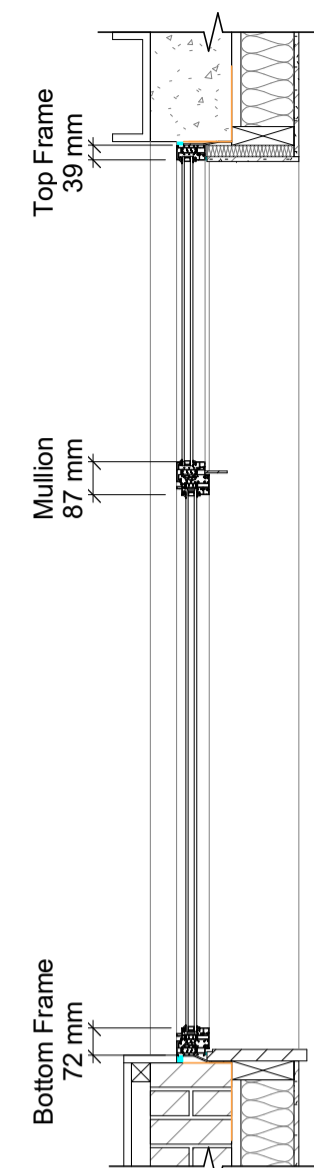
Jamb Detail 1:20



Elevation  
Detail 1:20

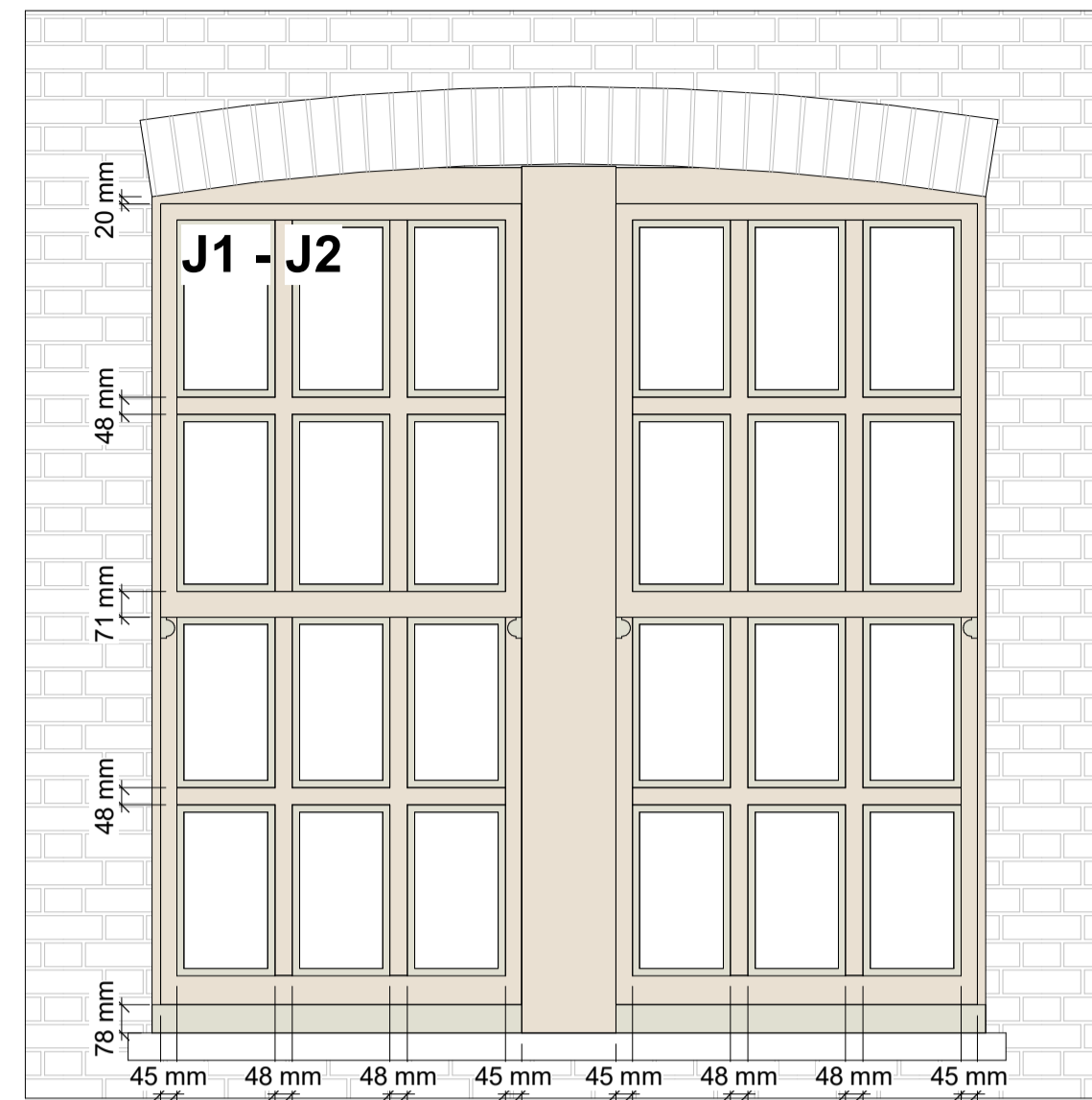


Jamb Detail 1:20

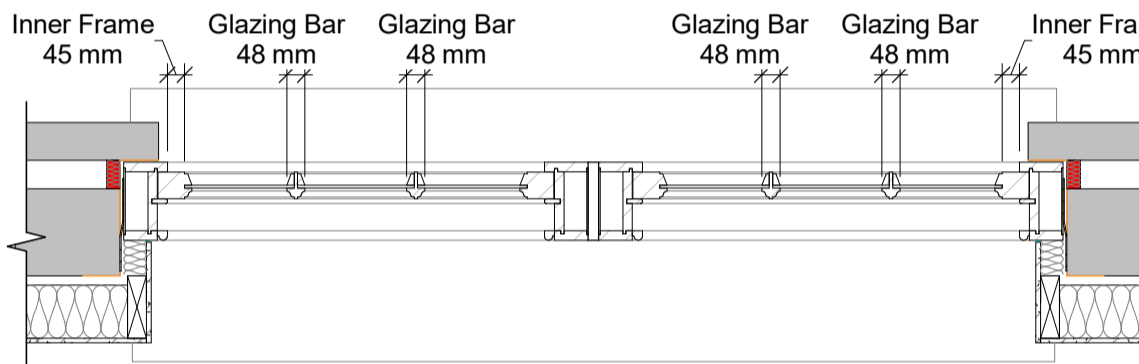


Head & Cill  
Detail 1:20

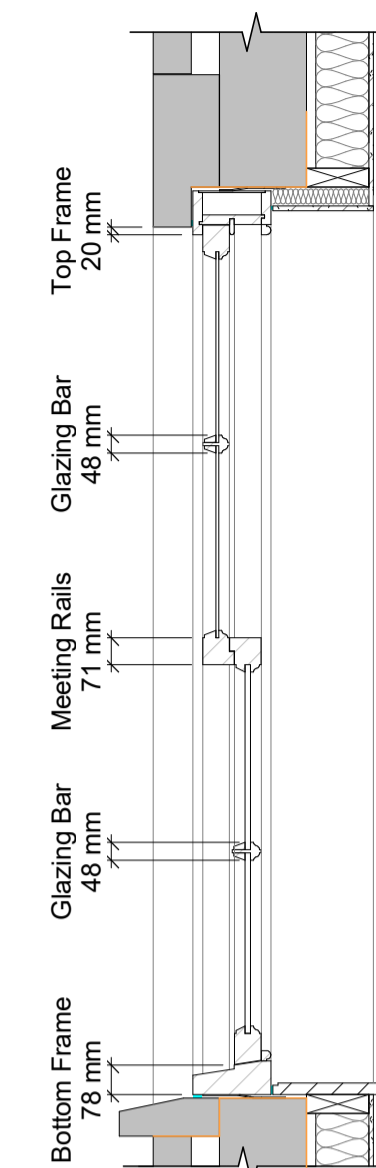
**Window Types F**  
New aluminium casement windows with double glazing to new window openings.  
**Product:** Reynaers SL 38 HI, Aluminium Casement Windows  
**Finish:** Aluminium polyester powder coated to grey RAL 7043  
**Ironmongery:** Satin Stainless Steel  
**Glazing:** Outer - 6mm clear toughened, hp coated sn 75 solar control  
Inner - 6.8mm clear laminated  
**U-Value:** 1.6W/m<sup>2</sup>K  
**G-Value:** 0.4  
**Acoustic Value:** 37 Rw(dB)  
**Glazing Bar:** Flat 30mm



Elevation  
Detail 1:20

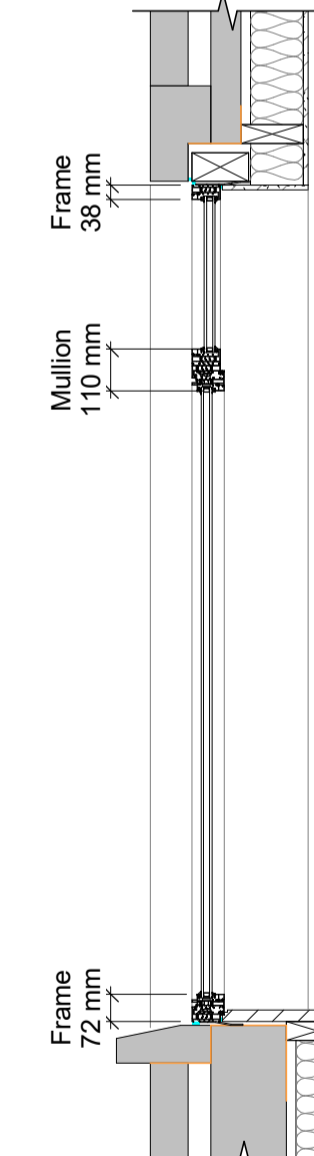


Jamb Detail 1:20



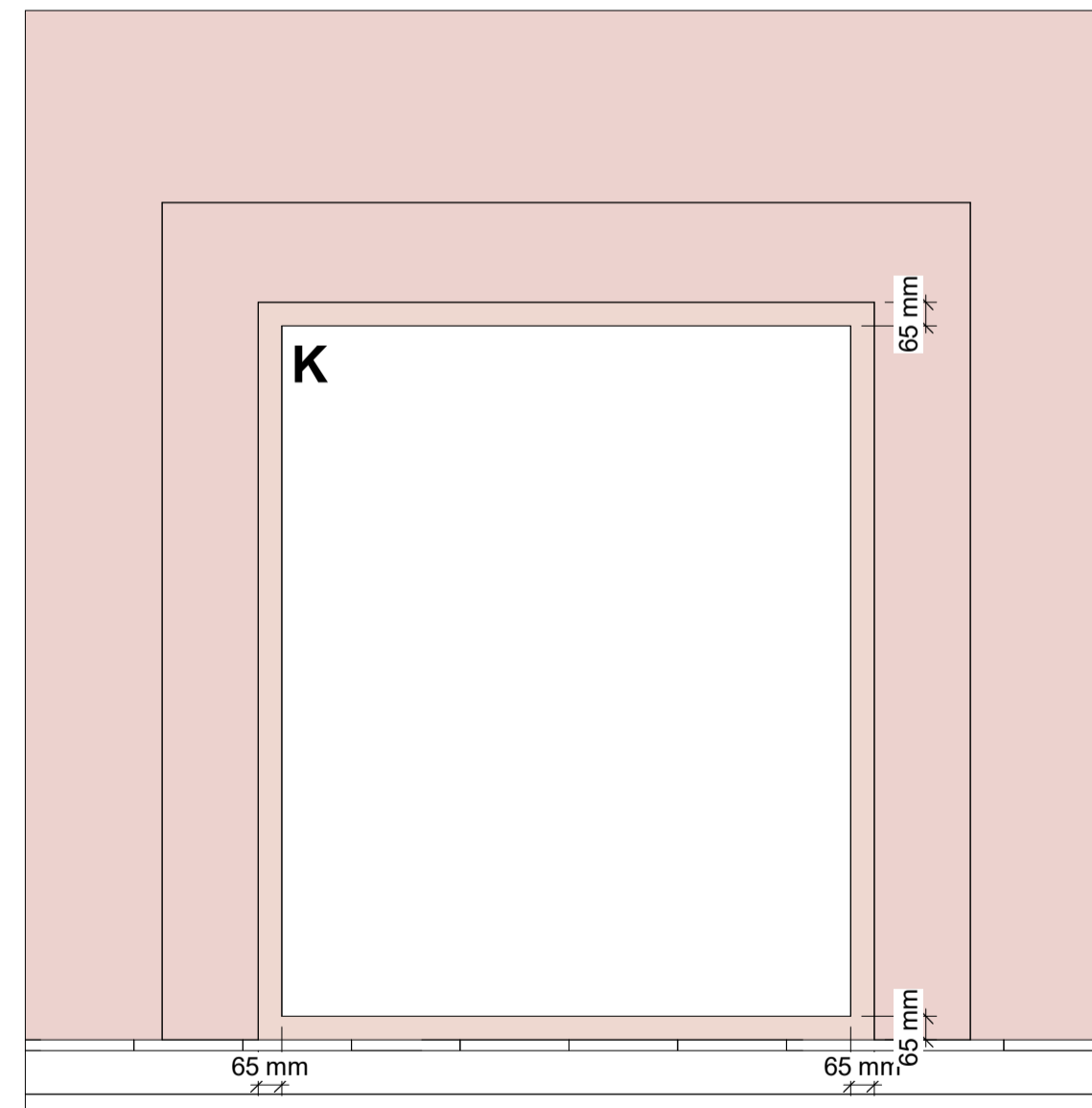
Head & Cill  
Detail 1:20

**Window Types J1 - J2**  
New double 'six over six' traditional timber sash windows to existing window openings.  
**Product:** Box Sash Windows  
**Finish:** Timber factory sprayed white RAL 9010  
**Ironmongery:** Satin Stainless Steel  
**Glass:** Fineo 8 SC 73/79 & Fineo Safety 8 v101 SC 73/79  
**U-Value:** 1.6W/m<sup>2</sup>K  
**G-Value:** 0.4  
**Acoustic Value:** 30 Rw(dB)  
**Glazing Bar:** Structural, Ovolo 48mm

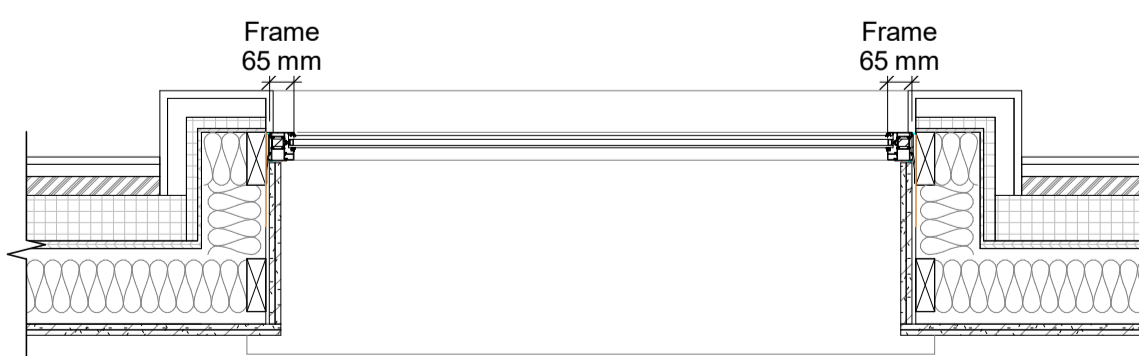


Head & Cill  
Detail 1:20

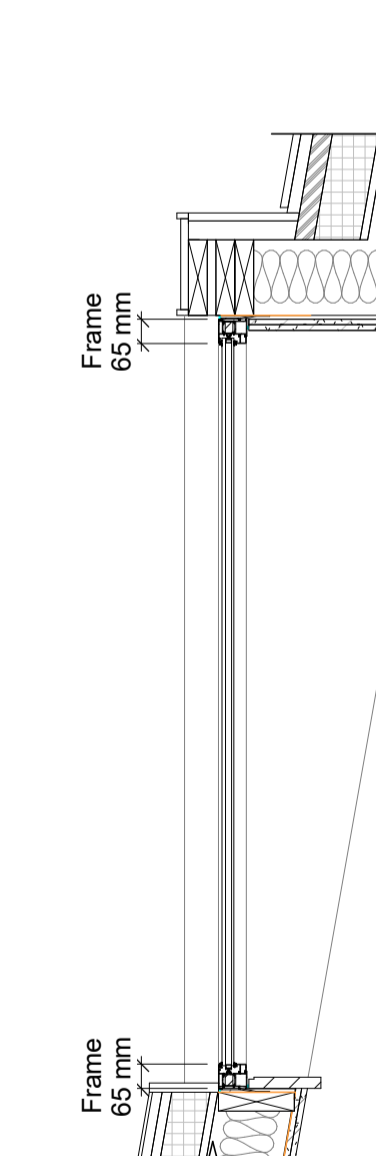
**Window Types G**  
New aluminium casement windows with double glazing to existing 'palladian window' opening.  
**Product:** Reynaers SL 38 HI, Aluminium Casement Windows  
**Finish:** Aluminium polyester powder coated to grey RAL 7043  
**Ironmongery:** Satin Stainless Steel  
**Glazing:** Outer - 6mm clear toughened, hp coated sn 75 solar control  
Inner - 6.8mm clear laminated  
**U-Value:** 1.6W/m<sup>2</sup>K  
**G-Value:** 0.4  
**Acoustic Value:** 37 Rw(dB)  
**Glazing Bar:** Flat 30mm



Elevation  
Detail 1:20



Jamb Detail 1:20



Head & Cill  
Detail 1:20

**Window Types K**  
New aluminium casement windows with double glazing to new window openings.  
**Product:** Senior SPW  
**Finish:** Aluminium polyester powder coated to copper brown RAL 8004  
**Glazing:** Outer - 6mm clear toughened, hp coated sn 75 solar control  
Inner - 10mm clear laminated  
**U-Value:** 1.6W/m<sup>2</sup>K  
**G-Value:** 0.4  
**Acoustic Value:** 39 Rw(dB)

**PLANNING NOTES**

Architectural Information - the level of detail shown on the drawings is relative to the submission of a PLANNING APPLICATION.

The drawings should therefore not be used for any other purpose without both the prior agreement of the architect, and subsequent checking / development by others

Dimensions and setting out - Do not scale from this drawing. All dimensions to be checked on site by the contractor and to be his responsibility.

Structure & Construction - these drawings, unless expressly noted otherwise, have not been fully coordinated with a Structural Engineer's input and show indicative construction build-up only

Building Control - the client / the contractor will liaise directly with Local Authority to ensure the project is completed in accordance with the Building Regulations

Planning - the client/ the contractor will ensure that the project is completed in accordance with the approved Planning drawings and take responsibility for the discharge of any planning conditions

Party Walls & Rights to Light - the client/ the contractor will ensure that any notices and consents required are obtained before work commences

Freshholder / Leaseholder / Restricted covenants / Easement approvals - the client will ensure that any notices and consents required are obtained before work commences

Archaeological & Ecological - the client/ the contractor will ensure that any notices and consents required are obtained before work commences

Areas - the areas provided on drawings are rounded to the nearest whole unit. Measurements are based upon received survey information and as such a reasonable allowance should be made for discrepancies or deviations that may occur during construction.

**REFERENCE KEY**

Application ref: 2022/4518/P

Planning Condition 07

Before the relevant part of the work is begun, detailed drawings, or samples of materials as appropriate, in respect of the following, shall be submitted to and approved in writing by the Local Planning Authority

Details including sections at 1:20 of all windows (including jambs, head and cill)

Scale confirmed in writing from LBC



Rev	Date	Description	Author	Checker
0	30.01.2024	PLANNING - Planning Condition 07 Draft Issue for comments	MS	GJ
A	08.02.2024	PLANNING - Planning Condition 07 Issue	MS	SD
B	16.04.2024	PLANNING - Updated Planning Condition 07 Issue	MS	GJ
C	19.04.2024	PLANNING - Planning Condition 7 package Issue	MS	SD

**PLANNING**

Project Number: H571  
Project Name: Bedford Row

Drawing Name: Condition 7 - Window Details - Sheet 03

Scale at A1 / A3: 1:20 / 1:40

Drawing Number: H571 - HUT - ZZ - ZZ - DR - A - P0712 - C

HÛT Architecture  
Studio 314  
203-213 Mare Street  
London E8 3JS  
020 7399 8680  
info@hutarchitecture.com

