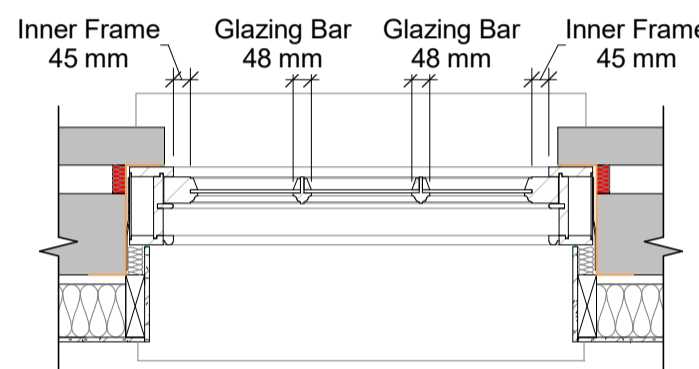


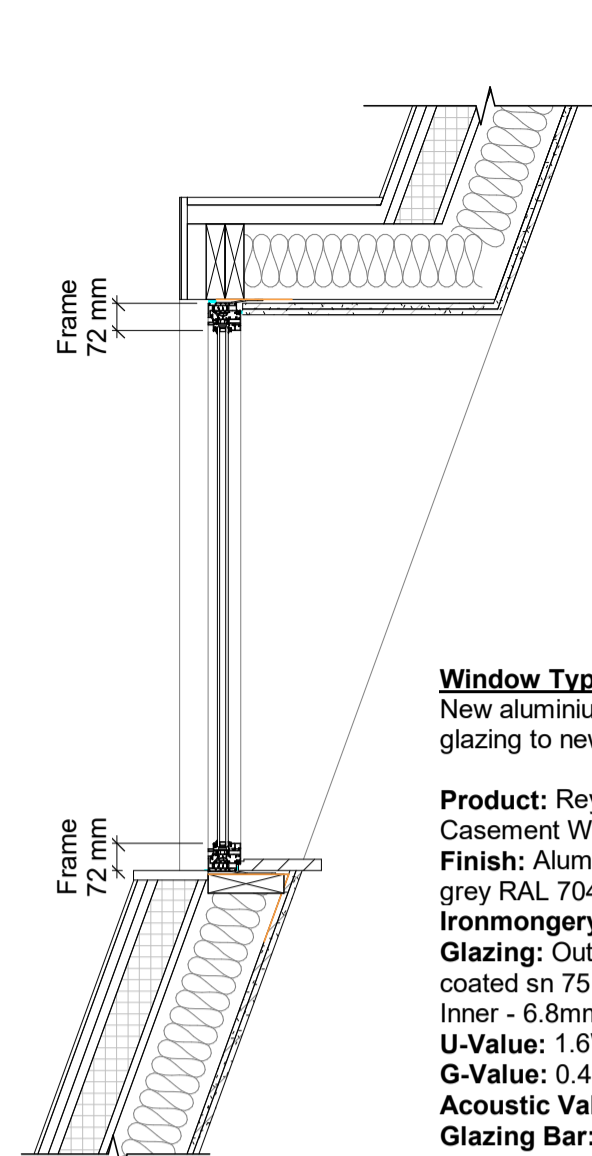
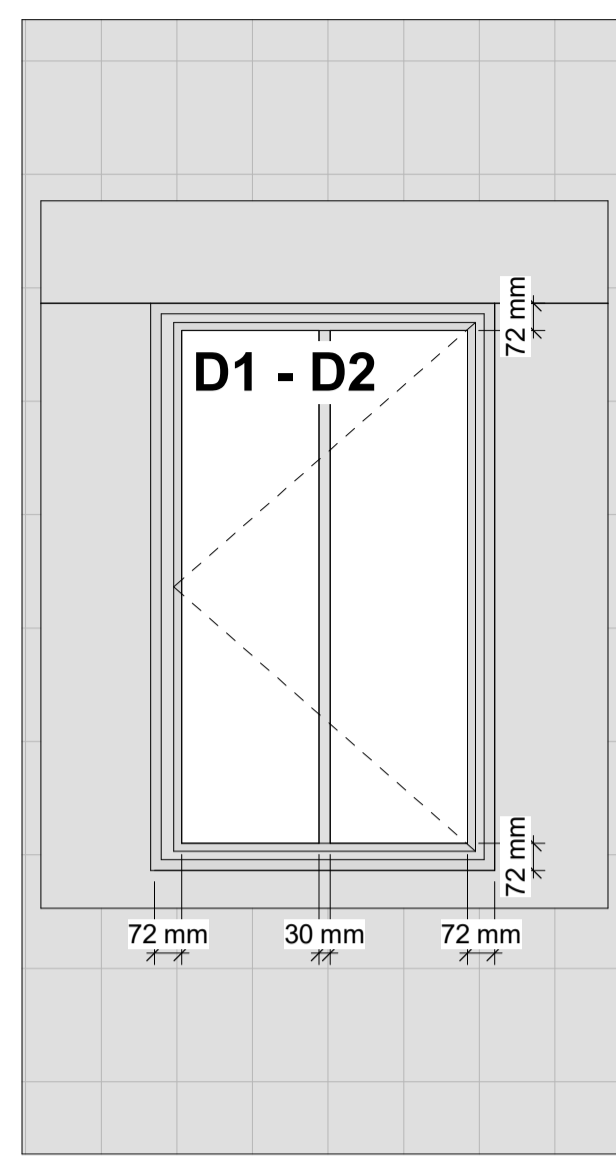
Window Types A1 - A7
 New "six over six" traditional timber sash windows to existing window openings. Existing header and sill to be made good and retained.
Product: Box Sash Windows
Finish: Timber factory sprayed white RAL 9010
Ironmongery: Satin Stainless Steel
Glass: Fineo 8 SC 73/79 & Fineo Safety 8 v101 SC 73/79
U-Value: 1.6W/m²K
G-Value: 0.4
Acoustic Value: 30 Rw(dB)
Glazing Bar: Structural, Ovolo 48mm

Elevation Detail 1:20

Head & Cill Detail 1:20



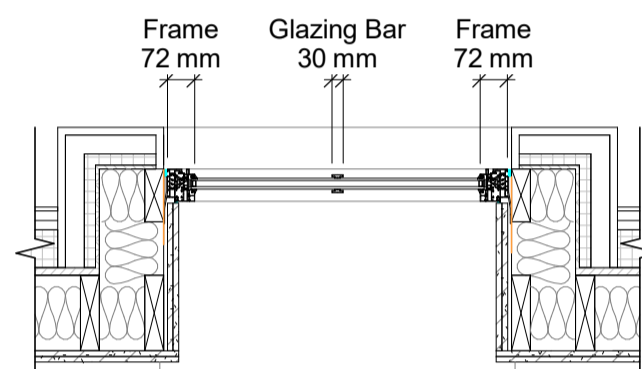
Jamb Detail 1:20



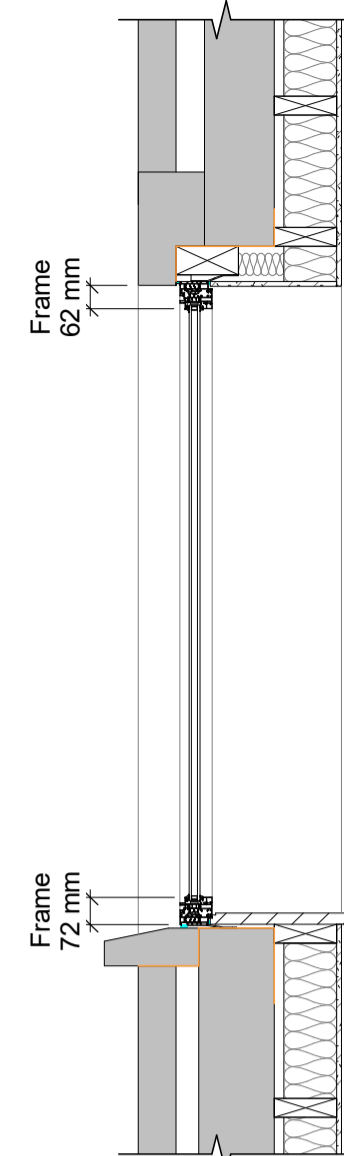
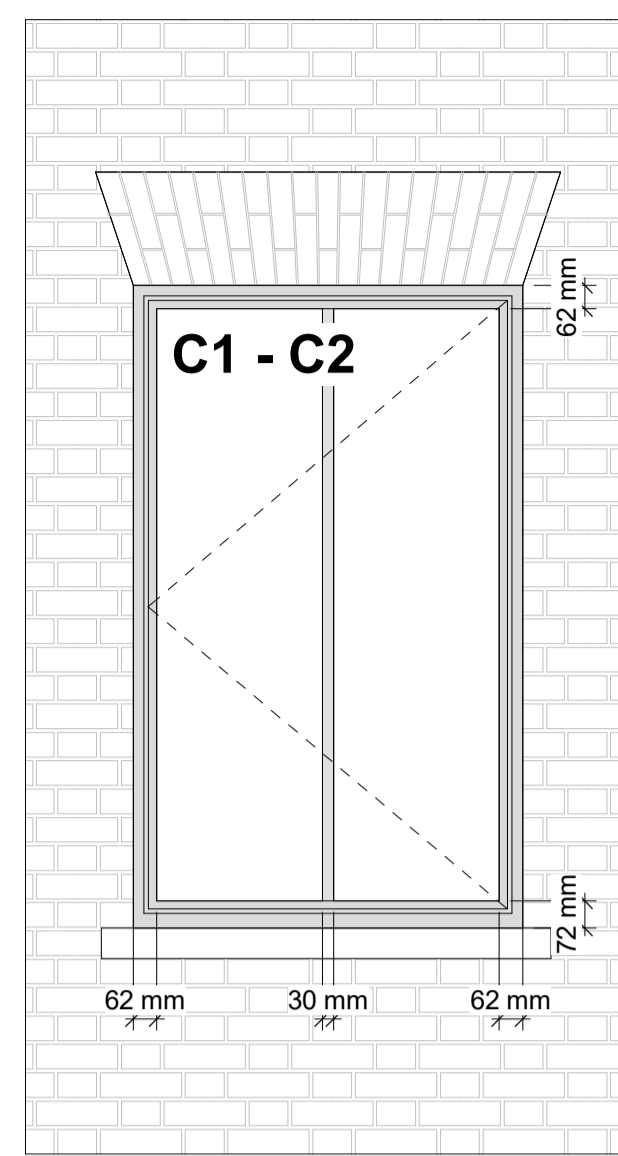
Window Types D1 - D2
 New aluminium casement windows with double glazing to new dormer/mansard openings.
Product: Reynaers SL 38 HI, Aluminium Casement Windows
Finish: Aluminium polyester powder coated to grey RAL 7043
Ironmongery: Satin Stainless Steel
Glazing: Outer - 6mm clear toughened, hp coated sn 75 solar control
 Inner - 6.8mm clear laminated
U-Value: 1.6W/m²K
G-Value: 0.4
Acoustic Value: 37 Rw(dB)
Glazing Bar: Flat 30mm

Elevation Detail 1:20

Head & Cill Detail 1:20



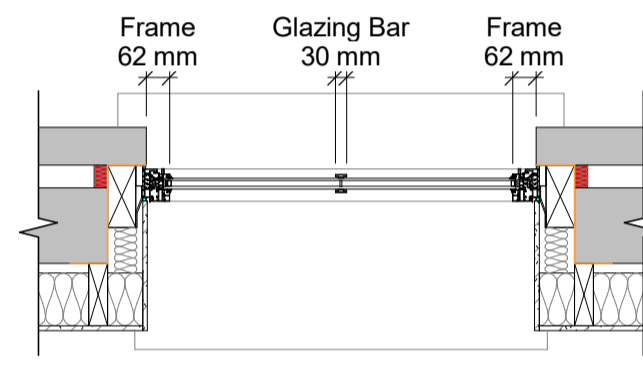
Jamb Detail 1:20



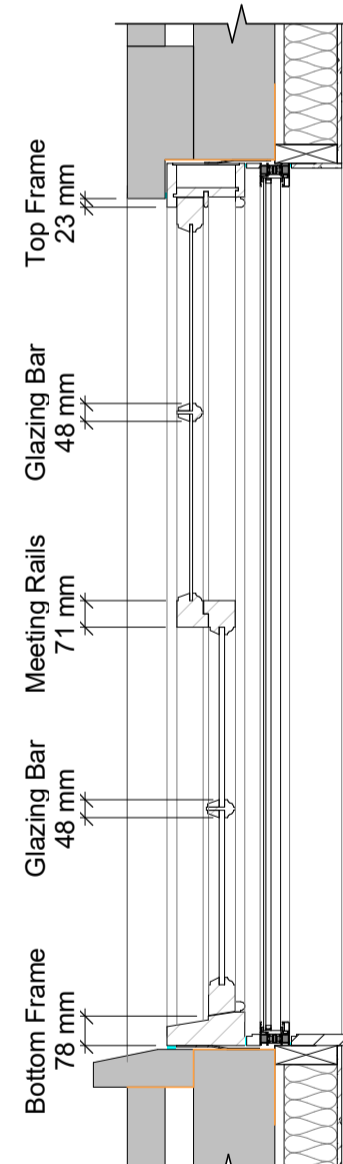
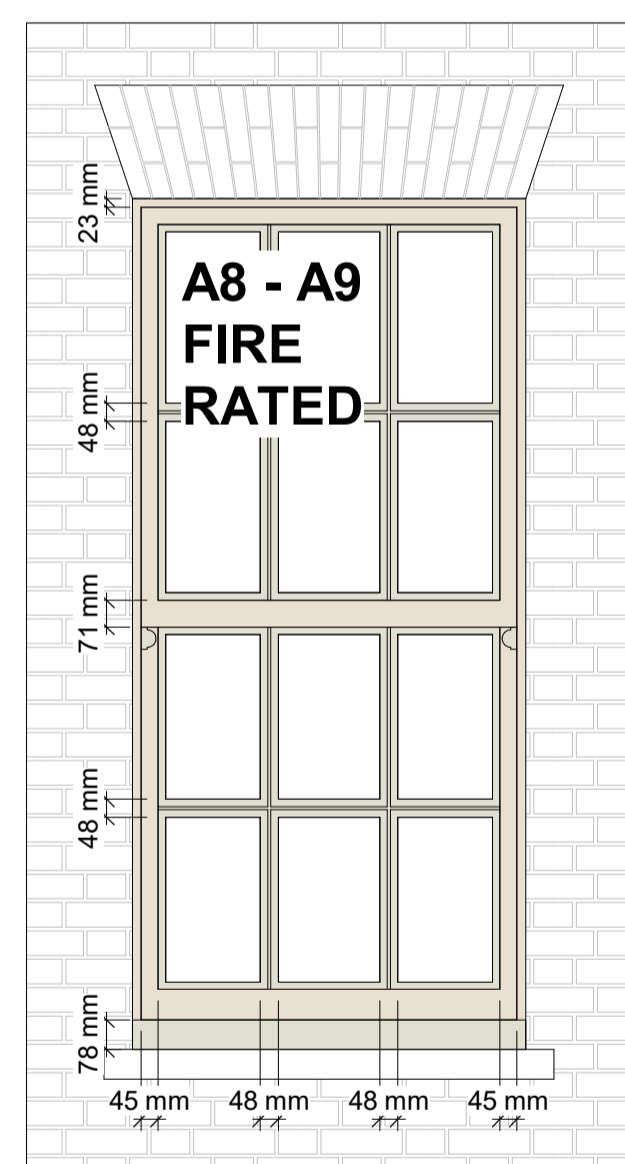
Window Types C1 - C2
 New aluminium casement windows with double glazing to existing window openings.
Product: Reynaers SL 38 HI, Aluminium Casement Windows
Finish: Aluminium polyester powder coated to grey RAL 7043
Ironmongery: Satin Stainless Steel
Glazing: Outer - 6mm clear toughened, hp coated sn 75 solar control
 Inner - 6.8mm clear laminated
U-Value: 1.6W/m²K
G-Value: 0.4
Acoustic Value: 37 Rw(dB)
Glazing Bar: Flat 30mm

Elevation Detail 1:20

Head & Cill Detail 1:20



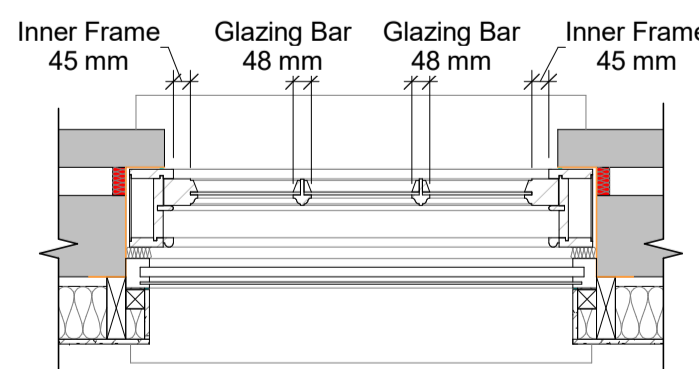
Jamb Detail 1:20



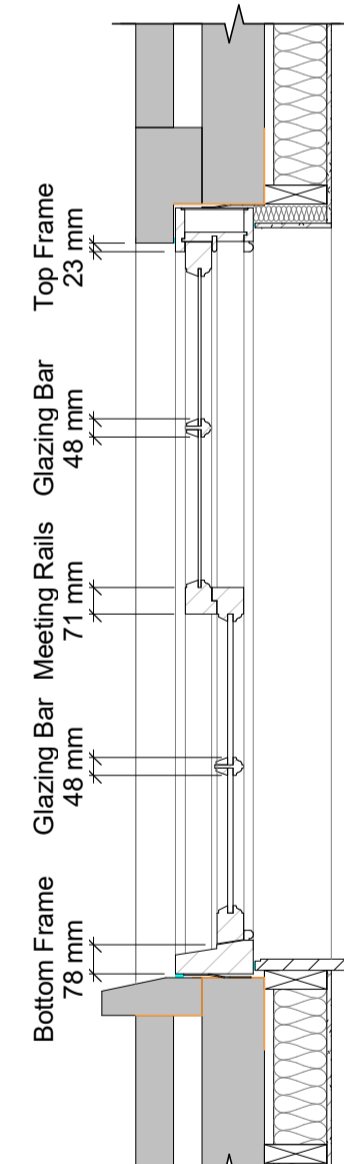
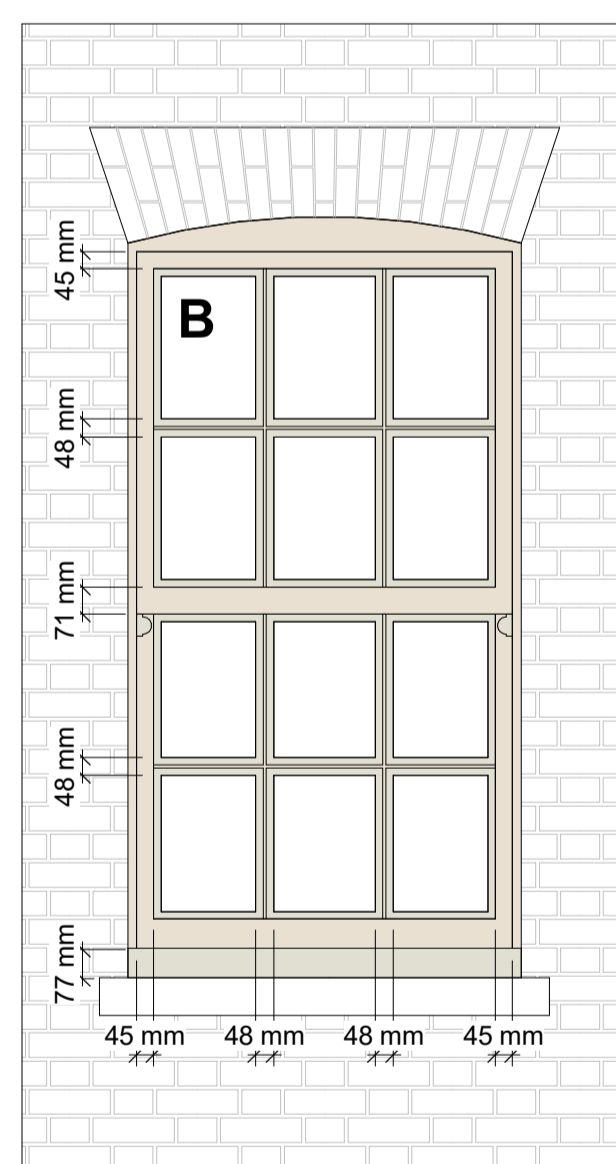
Window Types A8 - A9
 New "six over six" traditional timber sash windows to existing window openings. Existing header and sill to be made good and retained.
Product: Box Sash Windows
Finish: Timber factory sprayed white RAL 9010
Ironmongery: Satin Stainless Steel
Glass: Fineo 8 SC 73/79 & Fineo Safety 8 v101 SC 73/79
U-Value: 1.6W/m²K
G-Value: 0.4
Acoustic Value: 30 Rw(dB)
Glazing Bar: Structural, Ovolo 48mm

Elevation Detail 1:20

Head & Cill Detail 1:20



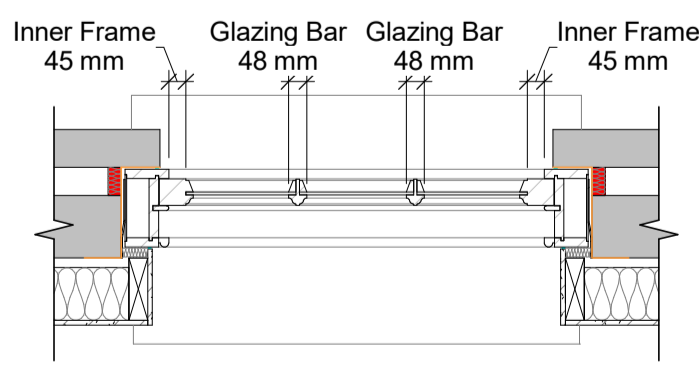
Jamb Detail 1:20



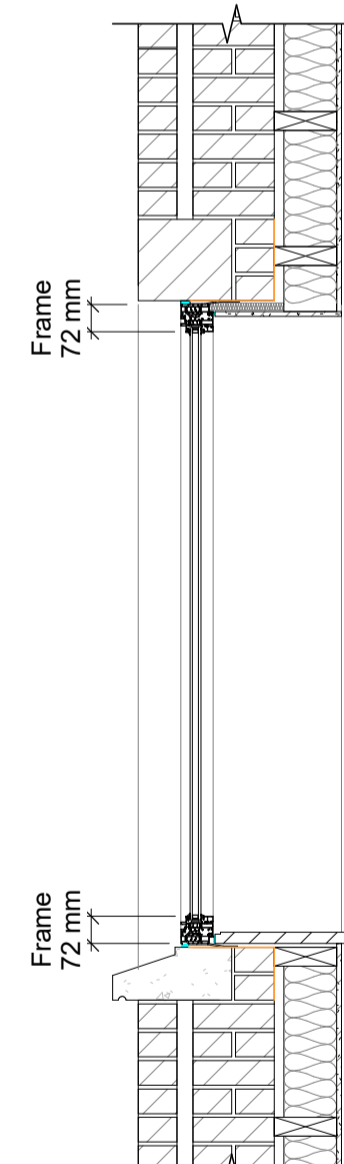
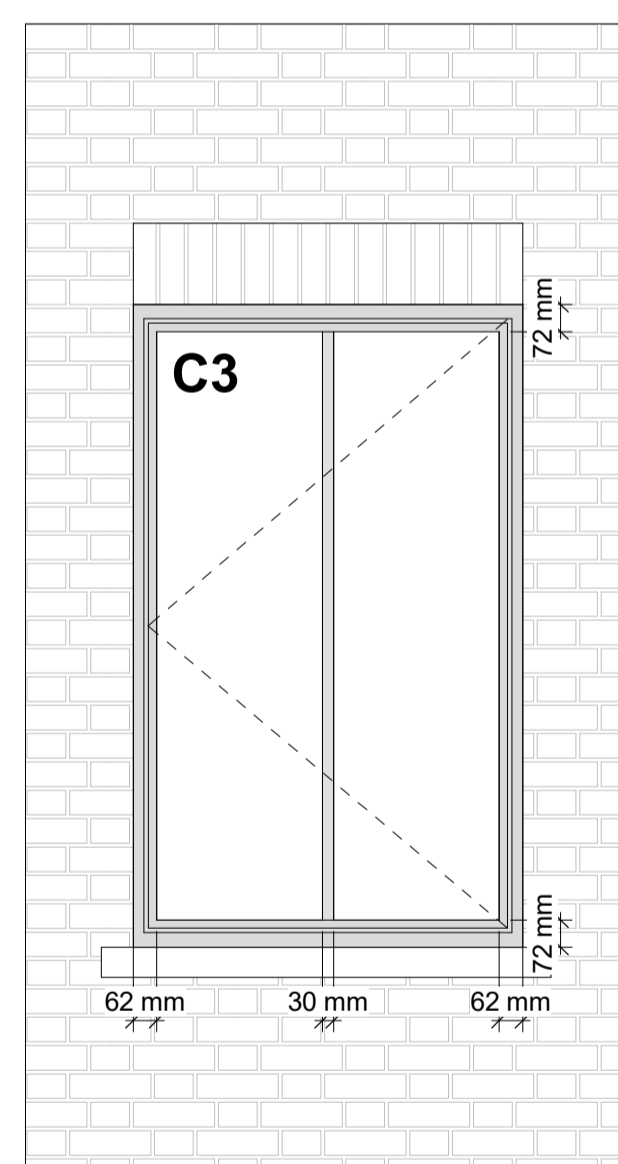
Window Types B
 New "six over six" traditional timber sash windows to existing window openings. Existing header and sill to be made good and retained.
Product: Box Sash Windows
Finish: Timber factory sprayed white RAL 9010
Ironmongery: Satin Stainless Steel
Glass: Fineo 8 SC 73/79 & Fineo Safety 8 v101 SC 73/79
U-Value: 1.6W/m²K
G-Value: 0.4
Acoustic Value: 30 Rw(dB)
Glazing Bar: Structural, Ovolo 48mm

Elevation Detail 1:20

Head & Cill Detail 1:20



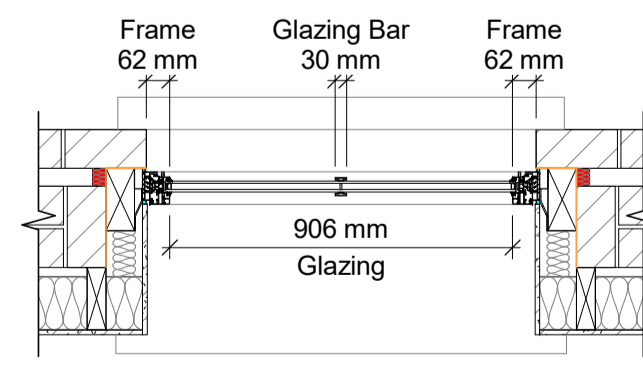
Jamb Detail 1:20



Window Types C3
 New aluminium casement windows with double glazing to new window openings.
Product: Reynaers SL 38 HI, Aluminium Casement Windows
Finish: Aluminium polyester powder coated to grey RAL 7043
Ironmongery: Satin Stainless Steel
Glazing: Outer - 6mm clear toughened, hp coated sn 75 solar control
 Inner - 6.8mm clear laminated
U-Value: 1.6W/m²K
G-Value: 0.4
Acoustic Value: 37 Rw(dB)
Glazing Bar: Flat 30mm

Elevation Detail 1:20

Head & Cill Detail 1:20



Jamb Detail 1:20

PLANNING NOTES

Architectural Information - the level of detail shown on the drawings is relative to the submission of a PLANNING APPLICATION.
 The drawings should therefore not be used for any other purpose without both the prior agreement of the architect, and subsequent checking / development by others.
 Dimensions and setting out - Do not scale from this drawing. All dimensions to be checked on site by the contractor and to be his responsibility.
 Structures & Construction - these drawings, unless expressly noted otherwise, have not been fully coordinated with a Structural Engineer's input and show indicative construction build-up only.
 Building Control - the client / the contractor will liaise directly with Local Authority to ensure the project is completed in accordance with the Building Regulations.
 Planning - the client/ the contractor will ensure that the project is completed in accordance with the approved Planning drawings and take responsibility for the discharge of any planning conditions.
 Party Walls & Rights to Light - the client/ the contractor will ensure that any notices and consents required are obtained before work commences.
 Freeholder / Leaseholder / Restricted covenants / Easement approvals - the client will ensure that any notices and consents required are obtained before work commences.
 Archaeological & Ecological - the client/ the contractor will ensure that any notices and consents required are obtained before work commences.
 Areas - the areas provided on drawings are rounded to the nearest whole unit. Measurements are based upon received survey information and as such a reasonable allowance should be made for discrepancies or deviations that may occur during construction.

REFERENCE KEY

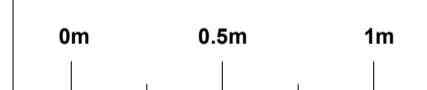
Application ref: 2022/4518/P

Planning Condition 07

Before the relevant part of the work is begun, detailed drawings, or samples of materials as appropriate, in respect of the following, shall be submitted to and approved in writing by the Local Planning Authority

Details including sections at 1:20 of all windows (including jambs, head and cill)

Scale confirmed in writing from LBC



Rev	Date	Description	Author	Checker
0	30.01.2024	PLANNING - Planning Condition 07 Draft Issue for comments	MS	GJ
A	08.02.2024	PLANNING - Planning Condition 07 Issue	MS	SD
B	16.04.2024	PLANNING - Updated Planning Condition 07 Issue	MS	GJ
C	19.04.2024	PLANNING - Planning Condition 7 package Issue	MS	SD

PLANNING

Project Number: H571
 Project Name: Bedford Row

Drawing Name: Condition 7 - Window Details - Sheet 01

Scale at A1 / A3: 1:20 / 1:40

Drawing Number: H571 - HUT - ZZ - ZZ - DR - A - P0710
 Revision: - C

