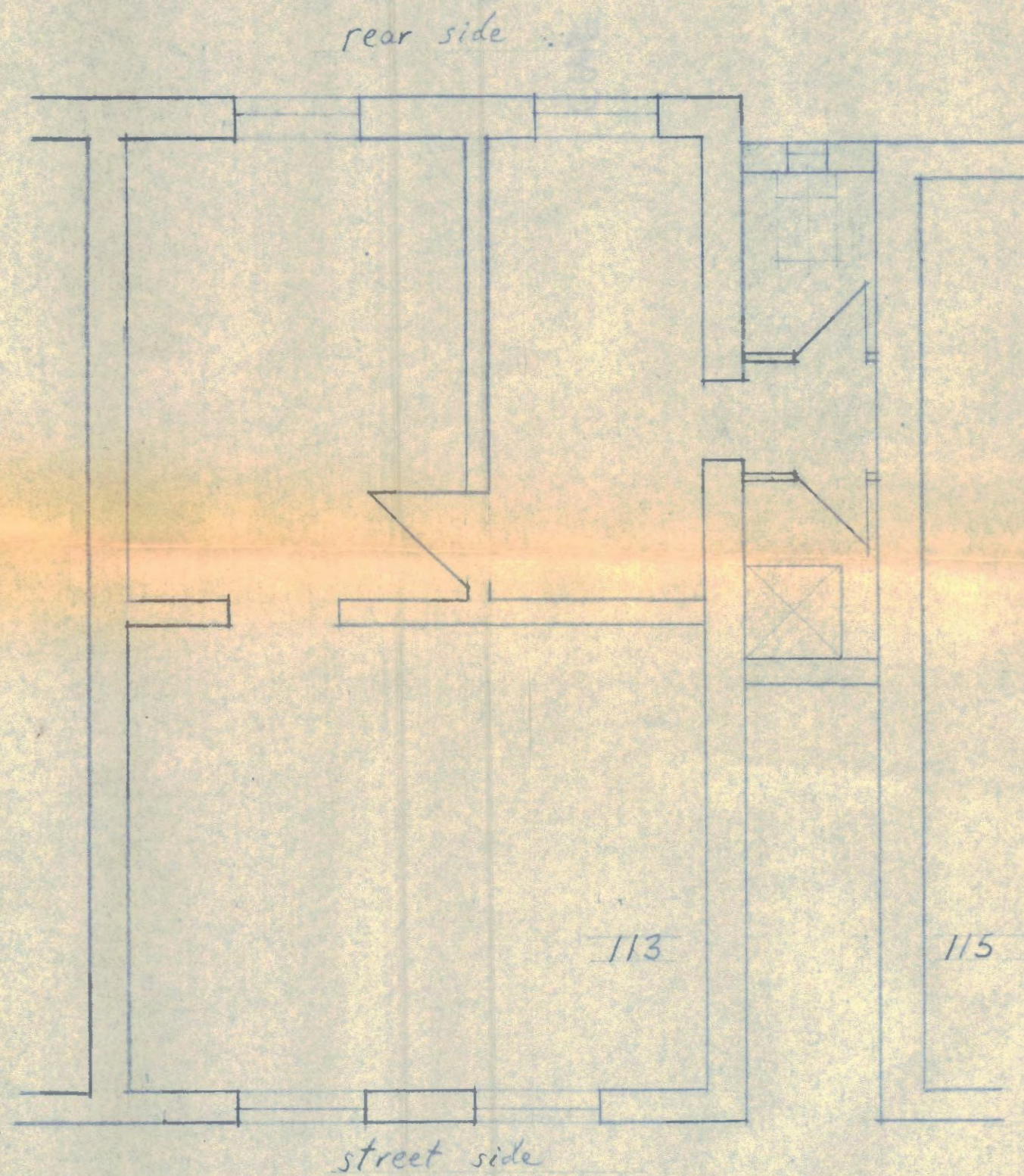


ELEVATION TO STREET



FIRST FLOOR PLAN



REAR ELEVATION

LONDON BOROUGH OF CAMDEN
 APPROVED
 PLANS ~~DISAPPROVED~~
 27 JUL 1971
 ON BEHALF OF THE COUNCIL

GTP/G11/25/A/11201

Scale: 1/4" = 1 foot
 Date: 25.5.71

PROPOSED FIRST FLOOR ADDITION TO 113 CASTLEHAVEN RD. N.W. FOR W.C. AND SHOWER
 End walls: 8" concrete blocks, rendered, Roof: low-pitched corrugated asbestos, Addition shown shaded.

CN Craig ARIBA
 3 Oak Hill Lodge
 Oak Hill Park NW3