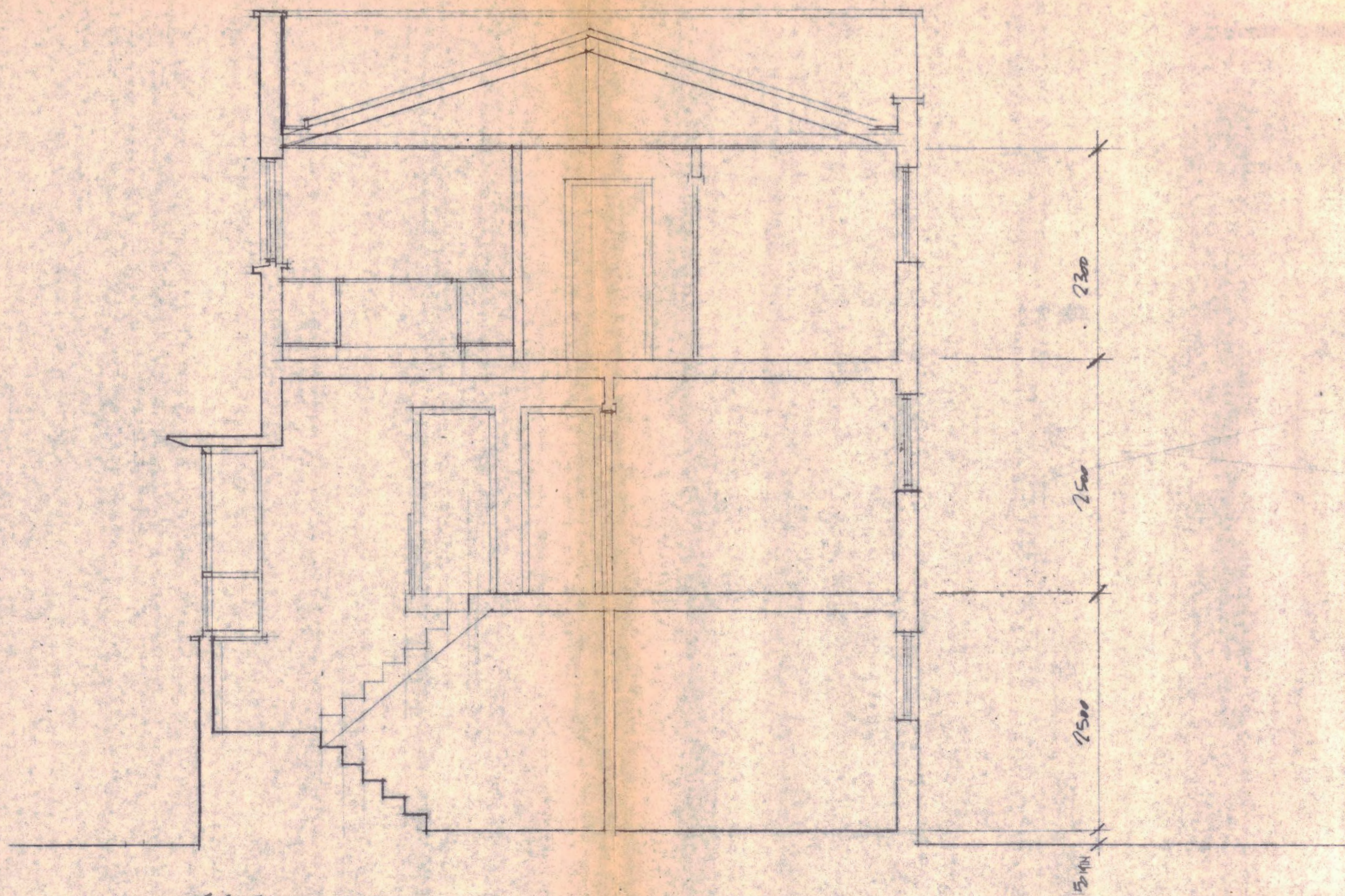
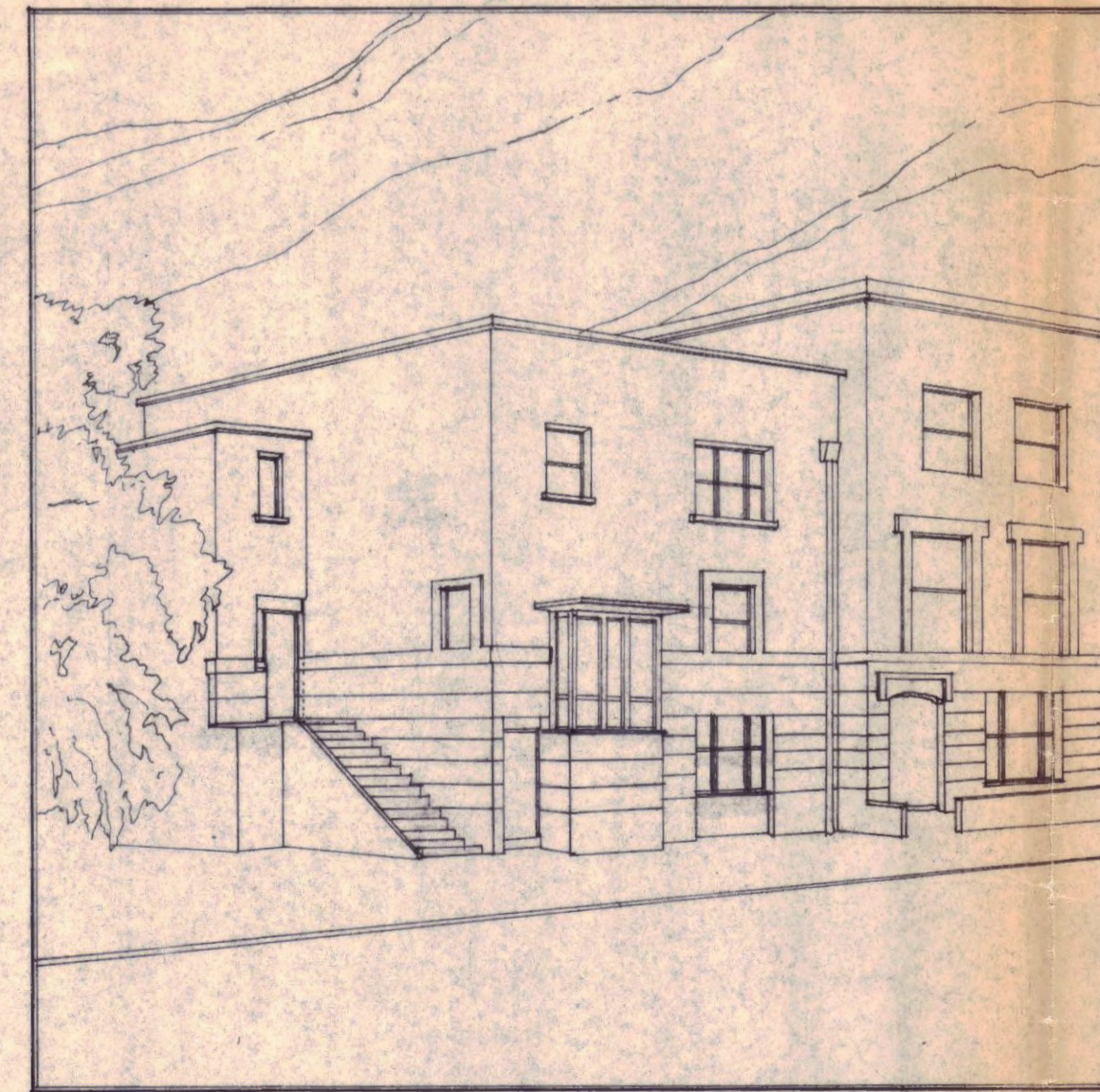


ELEVATION TO GRAYTON CRESCENT



SECTION A-A



PERSPECTIVE

TP 8802616

LONDON BOROUGH OF CAMDEN
 PLANNING AND TRANSPORT
 DEPARTMENT
 27 OCT 1988
 RECEIVED

STEPHEN GREENBERG ■ DEAN HAWKES
 ARCHITECTS
 PROJECT 27 GRAYTON CRESCENT
 CLIENT THE ST BENEDES WORKS ASSOCIATIONS
 DRAWING ELEVATION, SECTION AND PERSPECTIVE
 DATE OCTOBER 1988 SCALE 500 NO 12/88
 27 BROWNLOW MEWS LONDON WC1N 2LA ■ 01 430 2604/5