

Scope of ECM Work Proposed

This ECM involves replacement of single glazed windows to double glazed windows, in keeping with the previously specified glazing replacements as the building is in conservation area.

The tables below shows the schedule of the windows to be replaced on ground, first and second floor.

Ref	Floor	Room Name	Room REF	Orientation	Type	Louvre
WG1	GROUND	STAFF	A-0F-135	N	A	N
WG2	GROUND	JULIA REED CLASS	A-0F-135	SW	A	N
WG3	GROUND	JULIA REED CLASS	A-0F-135	SW	A (L)	Y
WG4	GROUND	JULIA REED CLASS	A-0F-135	SW	A	N
WG5	GROUND	ACORN CLASS	A-0F-135	SW	A	N
WG6	GROUND	ACORN CLASS	A-0F-137	NW	C	N
WG7	GROUND	ACORN CLASS	A-0F-137	SW	B	N
WG8	GROUND	ACORN CLASS	A-0F-137	SW	E	N
WG9	GROUND	ACORN CLASS	A-0F-137	SW	B	N
WG10	GROUND	ACORN CLASS	A-0F-137	SE	C	N
WG11	GROUND	ACORN CLASS	A-0F-137	SE	C (L)	Y
WG12	GROUND	WC	A-0F-138	SW	A	N
WG13	GROUND	CONKER CLASS	A-0F-140	SW	A	N
WG14	GROUND	CONKER CLASS	A-0F-140	SW	A	N
WG15	GROUND	CONKER CLASS	A-0F-140	SW	A (L)	Y
WG16	GROUND	CONKER CLASS	A-0F-140	SW	A	N
WG17	GROUND	CONKER CLASS	A-0F-140	SW	A	N
WG18	GROUND	STAFF KITCHEN	A-0F-147	SW	A	N
EDI	GROUND	WC	A-0F-136	SW	EDI	N
ED2	GROUND	ACORN CLASS	A-0F-137	NE	ED2	N
Total Windows			20			

Table 12. Proposed Ground Floor Window Replacement

Ref	Floor	Room Name	Room REF	Orientation	Type	Louvre
WF1	FIRST	IVY CLASS	A-1F-190	SW	A	N
WF2	FIRST	IVY CLASS	A-1F-190	SW	A	N
WF3	FIRST	IVY CLASS	A-1F-190	SW	A (L)	Y
WF4	FIRST	IVY CLASS	A-1F-190	SW	A	N
WF5	FIRST	IVY CLASS	A-1F-190	SW	A	N
WF6	FIRST	THE BEEHIVE	A-1F-189	SW	A	N
WF7	FIRST	DANDELION CLASS	A-1F-187	NE	C	N
WF8	FIRST	DANDELION CLASS	A-1F-187	NE	C	N
WF9	FIRST	DANDELION CLASS	A-1F-187	SW	A	N
WF10	FIRST	DANDELION CLASS	A-1F-187	SW	E	N
WF11	FIRST	DANDELION CLASS	A-1F-187	SW	A	N
WF12	FIRST	DANDELION CLASS	A-1F-187	SE	C	N
WF13	FIRST	DANDELION CLASS	A-1F-187	SE	C (L)	Y
WF14	FIRST	CLOAKROOM	A-1F-183	SW	A	N
WF15	FIRST	WC	A-1F-182	SW	A	N
WF16	FIRST	POPPY CLASS	A-1F-180	SW	A	N
WF17	FIRST	POPPY CLASS	A-1F-180	SW	A (L)	Y
WF18	FIRST	POPPY CLASS	A-1F-180	SW	A	N
WF19	FIRST	POPPY CLASS	A-1F-180	SW	A	N
WF20	FIRST	RESOURCE ROOM	A-1F-196	SW	A	N
Total Windows			20			

Table 13. Proposed First Floor Window Replacement

Ref	Floor	Room Name	Room REF	Orientation	Type	Louvre
WS1	SECOND	ELM CLASS	A-0F-135	N	A	N
WS2	SECOND	ELM CLASS	A-0F-135	SW	A	N
WS3	SECOND	ELM CLASS	A-0F-135	SW	A (L)	Y
WS4	SECOND	ELM CLASS	A-0F-135	SW	A	N
WS5	SECOND	ELM CLASS	A-0F-135	SW	A	N
WS6	SECOND	ELM CLASS	A-0F-137	NW	C	N
WS7	SECOND	OAK CLASS	A-0F-137	SW	B	N
WS8	SECOND	OAK CLASS	A-0F-137	SW	E	N
WS9	SECOND	OAK CLASS	A-0F-137	SW	B	N
WS10	SECOND	OAK CLASS	A-0F-137	SE	C	N
WS11	SECOND	OAK CLASS	A-0F-137	SE	C (L)	Y
WS12	SECOND	OAK CLASS	A-0F-138	SW	A	N
WS13	SECOND	OAK CLASS	A-0F-140	SW	A	N
WS14	SECOND	STAFF	A-0F-140	SW	A	N
WS15	SECOND	ASH CLASS	A-0F-140	SW	A (L)	Y
WS16	SECOND	ASH CLASS	A-0F-140	SW	A	N
WS17	SECOND	ASH CLASS	A-0F-140	SW	A	N
WS18	SECOND	ASH CLASS	A-0F-147	SW	A	N
WS19	SECOND	ASH CLASS	A-0F-136	SW	EDI	N
WS20	SECOND	STORE	A-0F-137	NE	ED2	N
WS21	SECOND	STAFF ROOM	A-0F-136	SW	EDI	N
Total Windows			21			

Table 14. Proposed Second Floor Window Replacement

The tables above specifies the type of window proposed and if the window would have a louvre or not. There are ten different types of windows, with and without louvres shown in Figure 12 and Figure 13 below. The windows shown in Figure 12 below are identified by alphabets “A”, “B”, “C”, “D”, “E” and “F” which are without louvres and windows identified by alphabets “A (L)”, “B (L)”, “C (L)” and “D (L)” in Figure 13 are with louvres.

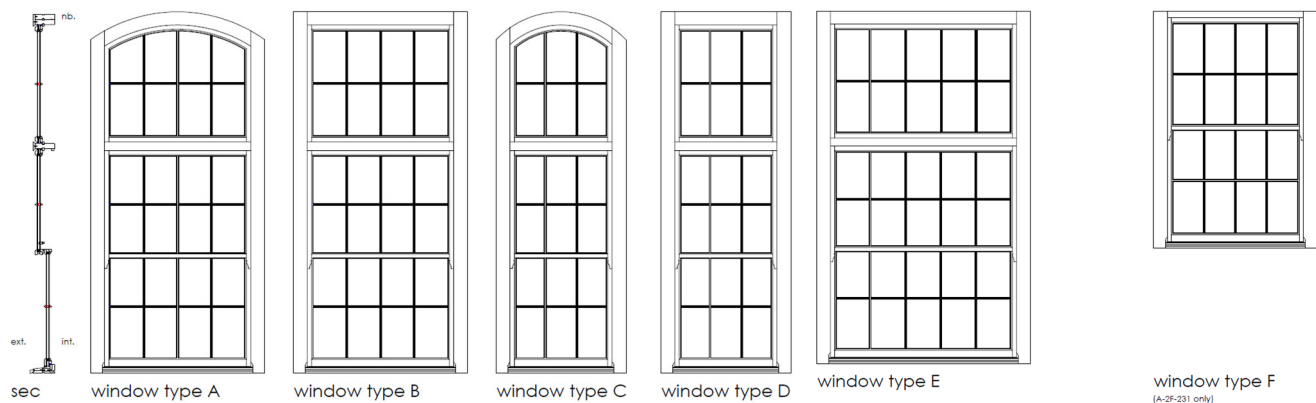


Figure 12. Windows without Louvre

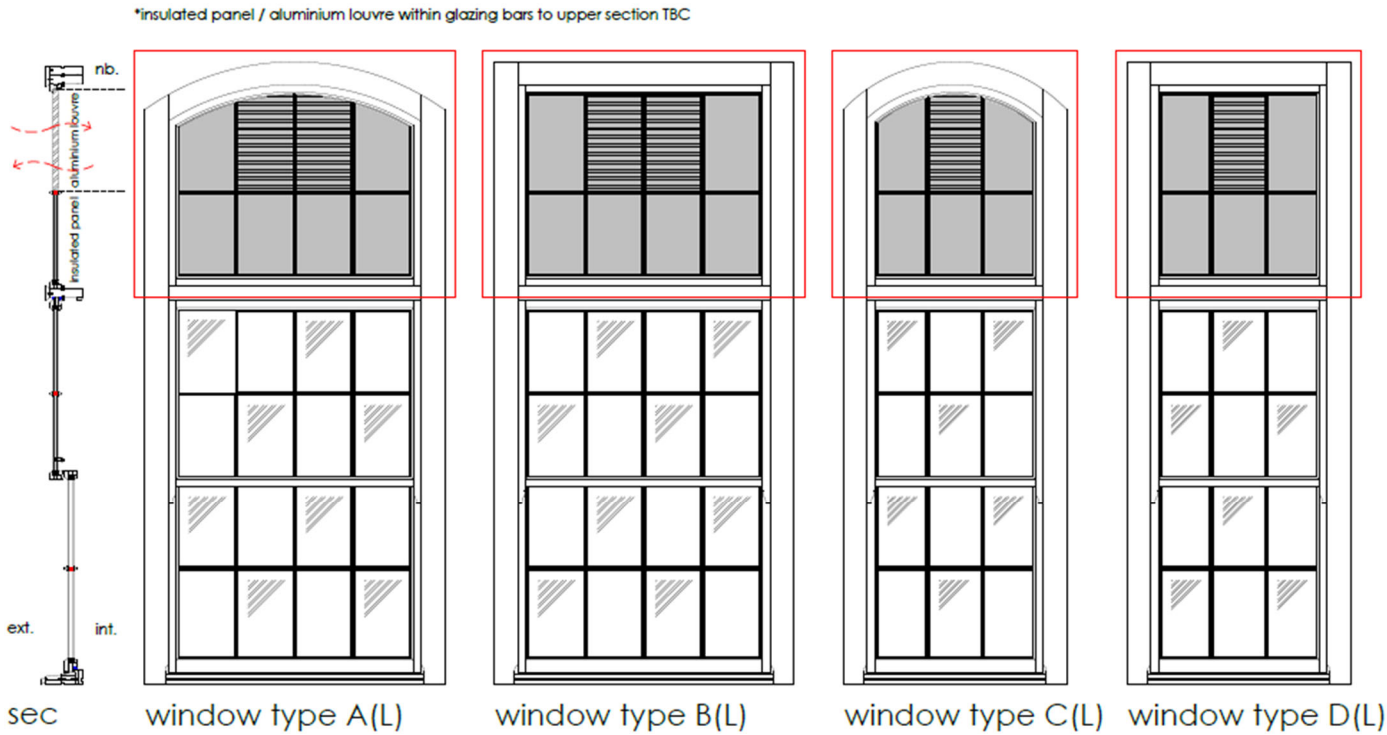


Figure 13. Windows with Louvre

The proposed window and external door schedule “2011_510A - Window Schedule.pdf” is in Appendix B. The proposed window and external door specification sheets are in Appendix B.

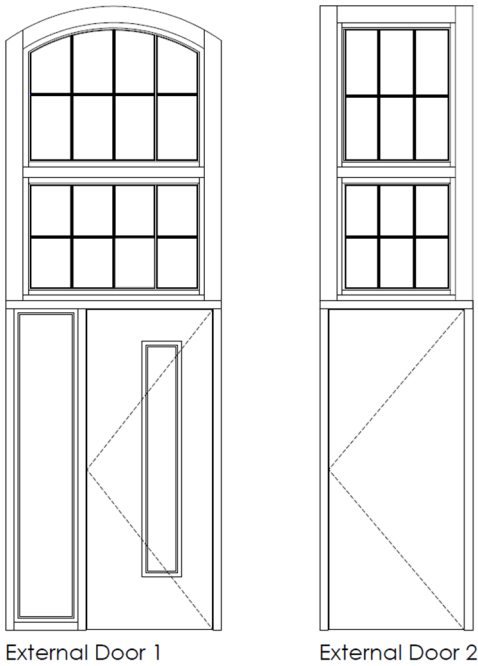


Figure 14. External doors

