

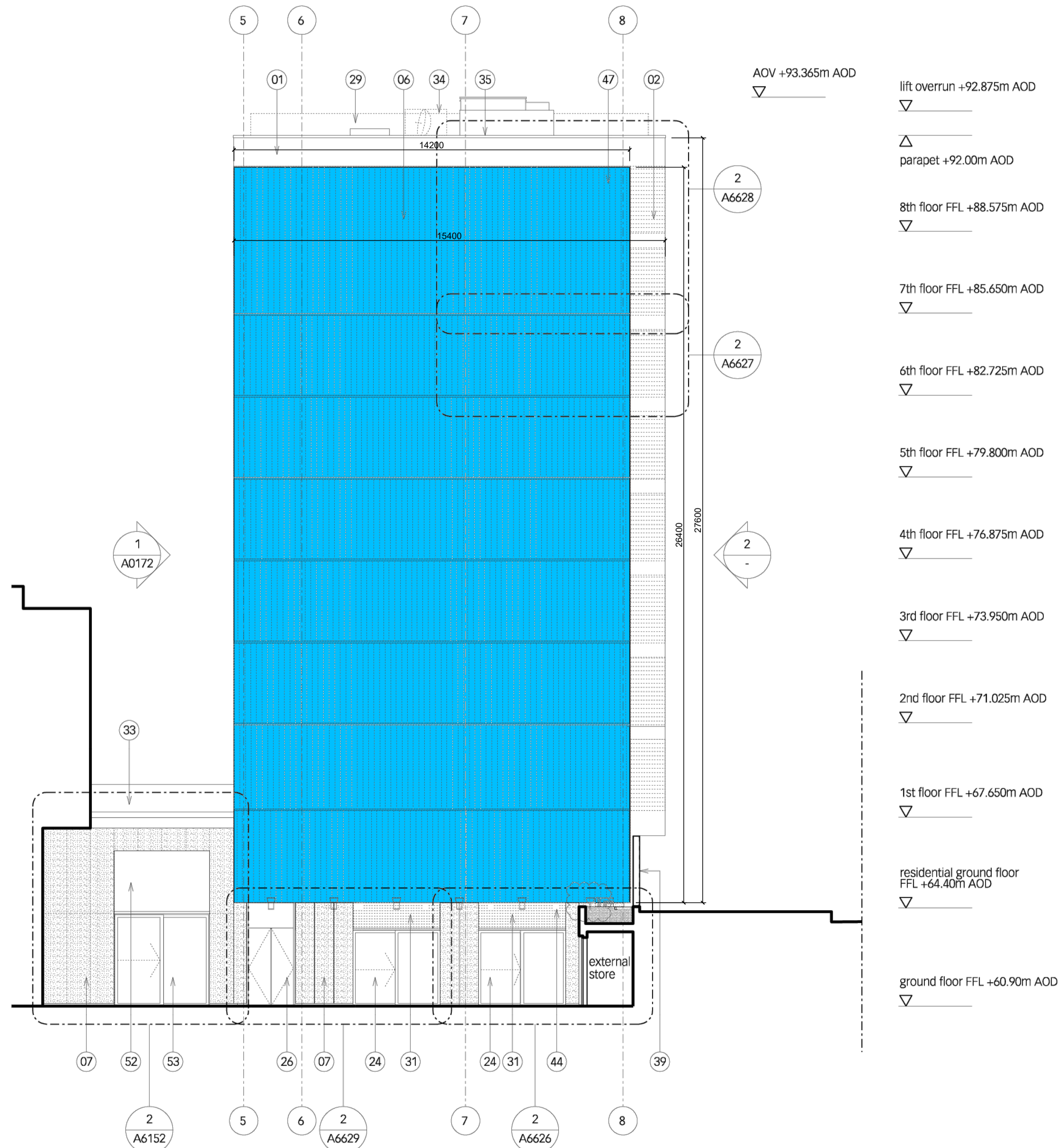
key

1. brick (F10/120)
2. ribbed brick detail (F10/120)
3. expressed movement joint (F30/616)
4. cantilevered precast concrete balcony to Structural engineers detail
5. precast concrete panel (H42/110)
6. precast concrete cladding with vertically ribbed face (H42/110)
7. brass rainscreen cladding (H92/110)
8. fixed perforated brass panel (H92/118) with anodised aluminium sub-frame (Z11/410)
9. sliding perforated brass panel (H92/118) with anodised aluminium sub-frame (Z11/410)
10. hit and miss brickwork (F10/120) over curtain walling (H11/130) with inward opening windows (L20/316) and glass type 2 (L40/110)
11. full height blast resistant curtain walling (H11/110) behind perforated brass screen (H92/118) with glass type 1 (L40/110)
12. full height blast resistant curtain walling (H11/110) with glass type 1 (L40/110)
13. full height blast resistant curtain walling (H11/110) with glass type 5 (L40/110)
14. full height blast resistant curtain walling (H11/110) with white ceramic frit finish & central vision strip to glazing (L40/200) with glass type 1
15. aluminium framed window (L10/205) with fixed glazing and translucent white interlayer (L40/220) and glass type 1 (L40/110)
16. aluminium framed window (L10/215) with fixed and inward opening casement and glass type 4 (L40/110)

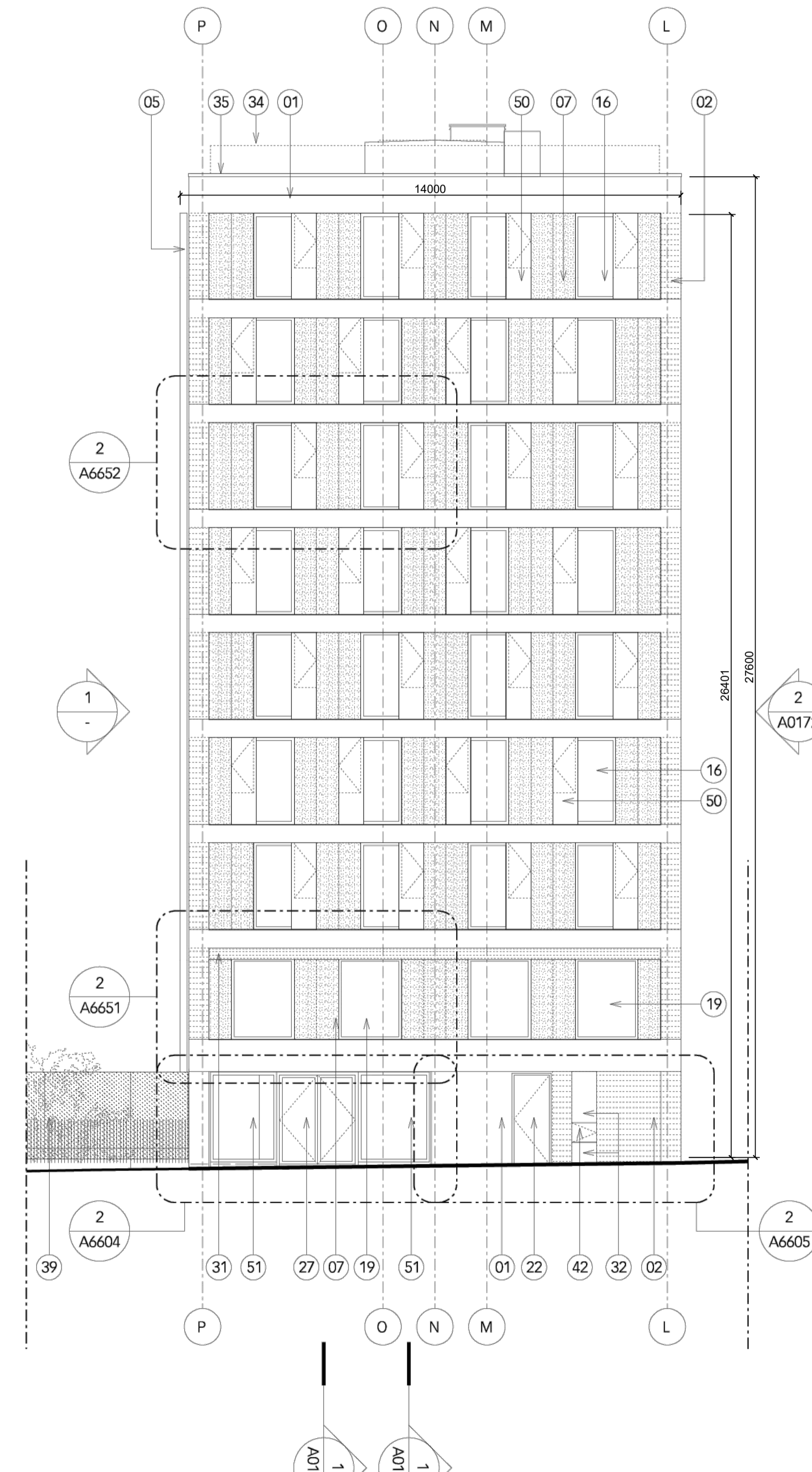
17. aluminium framed window (L10/205) with fixed and inward opening casement translucent white interlayer (L40/220) and glass type 2 (L40/110)
18. blast resistant aluminium framed window (L10/225) with inward opening casement and glass type 1 (L40/110)
19. blast resistant aluminium framed window (L10/225) with fixed glazing and glass type 4 (L40/110)
20. aluminium framed sliding/folding glazed door (L10/250) with glass type 2 (L40/110)
21. aluminium framed glazed door (L20/310) with powered operation & glass type 1 (L40/110)
22. metal faced door (L20/420) with PPC finish (M60/145)
23. steel louvre door (L20/410) with PPC finish (M60/145)
24. blast resistant aluminium glazed lift and slide door (L20/320) and fixed side panels with glass type 1 (L40/110)
25. blast resistant aluminium glazed automated escape door (L20/320) with glass type 1 (L40/110)
26. brass faced insulation aluminium escape door (L20/314)
27. aluminium framed glazed door (L20/312) with glass type 4 (L40/110)
28. glazed double door with aluminium head and bottom rails and powered operation (L20/300)
29. roof access hatch (L10/450)
30. brass faced opening vent within blast resistant curtain walling (H11/110)
31. ventilation grill with anodised aluminium finish (L10/420)
32. ventilation grill with anodised aluminium finish integrated into glazing system
33. cantilevered glass balustrade (L30/210)

34. steel balustrade (L30/250) with painted finish (M60/110)
35. zinc coping to parapet (H74/130)
36. omitted
37. metal gate for pedestrian entrance
38. metal gate for vehicular entrance
39. perimeter screen
40. steel restraints for Alvanley Garden boundary wall to SE's details
41. integrated bat boxes (F30/180)
42. dry riser inlet
43. bridge
44. external lighting to lighting designers specification
45. fixed security cameras to M&E engineers specification
46. natural ventilation turrets with anodised aluminium finish
47. JCC signage
48. black frit (L40/200) to glazing
49. boiler flues
50. perforated brass screen (H92/118) in front of window with part height opening casement (L10/215)
51. full height blast resistant curtain walling (H11/110) with glass type 4 (L40/110)
52. full height blast resistant curtain walling (H11/110) with glass type 3 (L40/110)
53. blast resistant aluminium glazed lift and slide door (L20/320) and fixed side panels with glass type 3 (L40/110)

rev date by revisions
/ 04.06.13 AY Issued for record



1 south east elevation

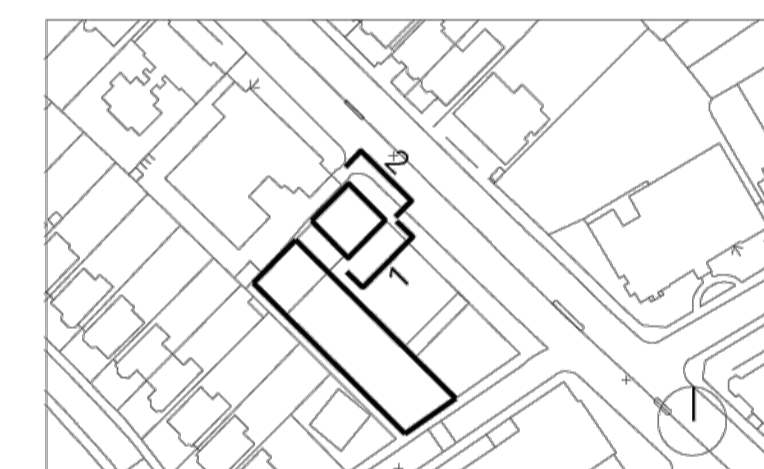


2 north east elevation

notes

This drawing is the property of Lifschutz Davidson Sandilands Ltd. No disclosure or copy of it may be made without the written permission of Lifschutz Davidson Sandilands Ltd.

key plan



project

A Jewish Community Centre
341-359 Finchley Road &
27 Lymington Road
London NW3 6ET

client

JCC Ventures Ltd

architect

Lifschutz Davidson Sandilands
Island Studios
22 St Peter's Square
London W6 9NW
T +44 (0)20 8600 4800
F +44 (0)20 8600 4700
mail@lds-uk.com

drawing title

general arrangement
residential SE & NE elevations

scale at A1 scale at A3 drawn date
1:100 1:200 LU 10.10

job no. drawing rev.
0790 R0171 /