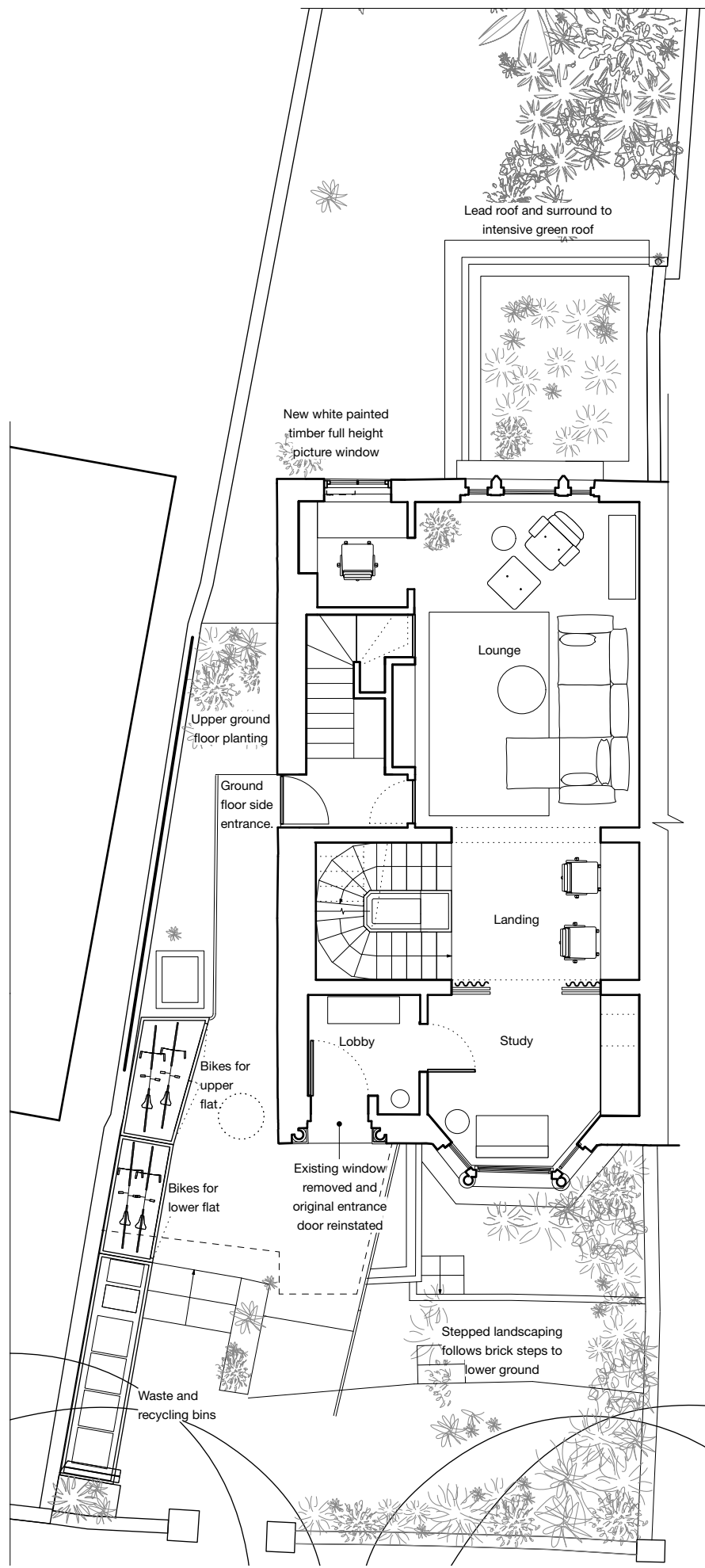
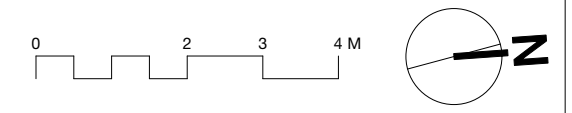


1. All new and existing sash windows overhauled to incorporate argon filled low-e glass slim-line double glazing with white painted timber.
2. All new brickwork to match existing using second hand colour matched stock brick and colour matched mortar laid with skilled bricklayers.
3. Lime render used to repair and replace all degraded decorative banding and projections. Exterior Keim or similar paints used to provide high quality topcoat.
4. All visible rainwater goods to be in black painted cast iron.
5. All handrails and guarding to be in minimally dimensioned black painted galvanized mild steel.

1 Proposed Lower Ground
Scale: 1:100



2 Proposed Ground
Scale: 1:100



Please Note
Do not Scale from this drawing
Do not build from this drawing unless issued for construction
All setting out, dimensions and levels must be checked on site.
Any discrepancies to be verified with the lead designer or architect appointed for the construction stage.

This drawing must not be copied or reproduced in whole or part by any method whatsoever, without the prior written approval of Norman-Prahm architects.

No.	Date	By	Revision Notes
D	18/03/2024	TN	- Conservatory updated with further details. - Ammendments to side elevation withdrawn. Remains as approved

Drawing Stamp

Planning

Design Firm
Norman-Prahm architects
www.normanprahm.com 07958522689

Project Title
60 South Hill Park
London
NW3 2SJ

Drawing Title
Prop. Ground / Lower Ground

RIBA Stage	3	Project ID	SHP
Drawn By	TN	Scale	1:100
Reviewed By	TN	Drawing No.	11_00
Issue Date	15/01/2024	Revision	D
CAD File Name	SHP_GA_SD_PLD.vwx		