

# ECO-GLAZED BRICK SLIPS

BY H&E SMITH



H&E SMITH

# About H&E Smith

Specialist Tile Manufacturers and  
Distributors Since 1926



Our **Eco-Glazed Brick Slips** and **Period Embossed Victorian Tiles**, all made on site, are our most popular selling lines, often used to create feature walls in bars, restaurants and retail outlets.

Our experience with the bespoke manufacture of ceramics has greatly enhanced our ability to be able to work closely and effectively with architects, designers and specifiers.

This has culminated in our large collection of clients that we now supply throughout the world, both in the fashion and hospitality sectors.

Our knowledge of the market has enabled us to expand our product offer, incorporating the latest ink-jet digital technology, innovative new materials in extra large formats and vast colour palettes, all available to the client in one easy process.

As designers and creators of ceramics, we are passionate to explore new horizons with materials, colours and textures. These are reflected in our comprehensive product ranges.

Samples can be ordered  
through our website and  
dispatched within hours.







Eco-Glazed Brick Slips  
are perfect for both  
internal and external  
applications.

## About Eco-Glazed Brick Slips

Our Eco-Glazed Brick Slips range is produced from recycled Welsh slate, which is fired to form a 215x65x15mm brick slip. This is then glazed and re-fired to produce a durable and highly decorative product for **internal** and **external** applications.

Our Eco-Glazed Brick Slips are made from a blend of recycled Welsh slate and locally sourced Etruria clay. A great product, sustainably sourced, thereby reducing pollution and waste in the process.

Eco-Glazed Brick Slips are applied to a wall in order to produce a high quality brick or tiled wall finish. As these thin surface facings are lighter and cheaper to produce than using solid blocks, they have become an extremely popular building and design resource for architects and specifiers alike.



# Hospitality

## Creating Unique Spaces

The appearance of a restaurant or bar is not just a matter of aesthetics, it sets the tone for the experience from the moment the customer enters the venue.

Renovation of such venues offers the perfect opportunity to create something unique.

Eco-Glazed Brick Slips are a superb choice for creating distinctive feature walls and are regularly used for both internal and external applications.

H&E Smith glazed brick slips have a number of attractive attributes which are worth taking into account when choosing the best materials to use on a project.





# Projects

## Mamma Mia

For this pizzeria renovation, they chose Eco-Glazed Brick slips to create their stunning counter, showcasing their open kitchen. The green brick slips are a fabulous contrast to the red painted walls and feature a gorgeously glossy finish.

They used Victorian green brick slips with accents of burgundy and snow.

Renovation works: Barr Build  
Architecture: Laura Donald  
Photography: Lucy Walters Photography  
Interior Design: Rogue Designs



## Gourmet Burger Kitchen

Brick Slip Tiles were used to create a distinctive, hard wearing interior solution for this client.





# Projects

## Joules Brewery

Eco-Glazed Brick Slips were used to create a defined seating area and to add interest to walls.



The theme was even carried through to the toilets as a backdrop to a showcase of classic games.





# Projects

## S.Luca Ice Cream

When S.Luca wanted to make a statement at their flagship cafe, they used three shades of Eco-Glazed Brick Slips to create their eye-catching pillars.

Their designs were created using Cut Grass, Treacle and Magnolia shades which look great against their purple seating.

They also added brick slips in Treacle to their dividing walls, adding mirrors for interest.

Work completed by Magna Design.





# Projects

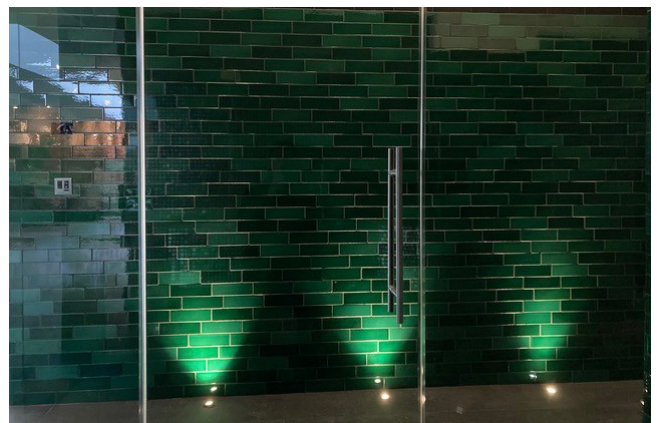
A great example of our Eco-Glazed Brick Slips being applied to transform a building exterior. Designers Peldon Rose wanted to make first impressions count for their project at NorthHill's Laystall Street building so used Cut Grass brick slips to create this look.



Design by Peldon Rose

For this swimming pool design, our client ordered five shades of green Eco-Glazed Brick Slips, offering a variety of light and dark tones and a stunning shine when captured by the spotlights or the reflection from the water.

Work completed by CP Kelly.





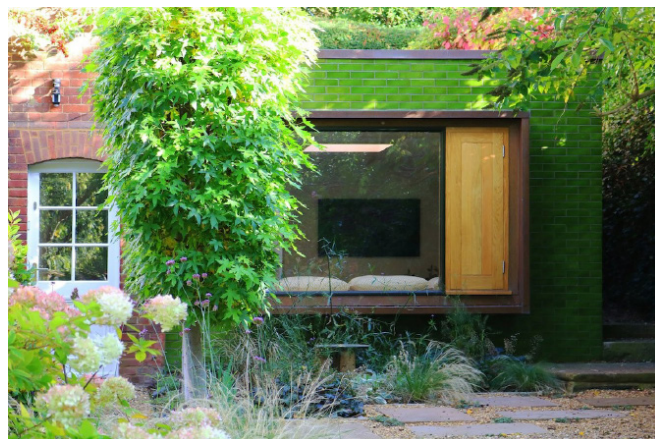
# Exterior Design

## Creating Feature Walls

An increasingly popular trend is to use brick slips to create a focal point visible from the rear of the house.

As properties are being renovated and extended, glazed brick slips are added to the outer wall to add the feeling of a grand entrance into the house from the garden area.

These are a far more modern alternative to a conservatory.



Design by ZDB Architects.



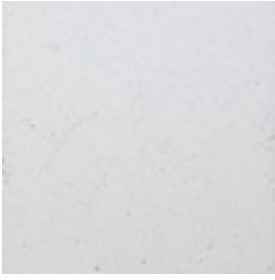
Design by James Dale Architects.  
Photography by Neil Perry.



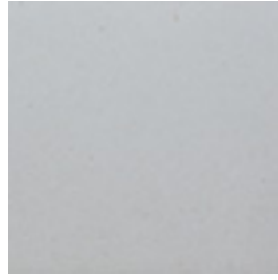
Design by Leask Architects. Photography by French & Tye.

Glazed brick slip are particularly useful from a design perspective. Reasons for this include both the wide colour range available and smooth, lustrous surface finish, suitable for interior or exterior use.

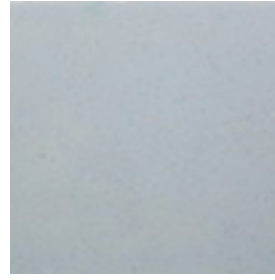




Snow



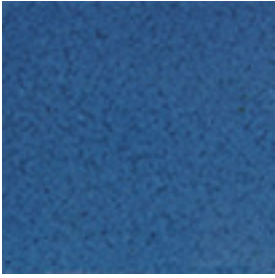
White Mist



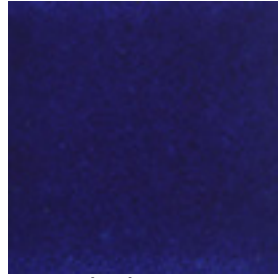
Winter Morning



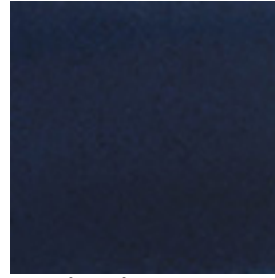
Off White Crackle



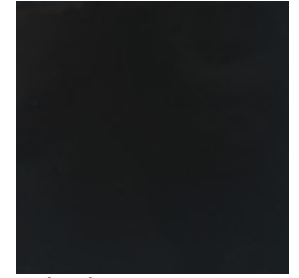
Denim



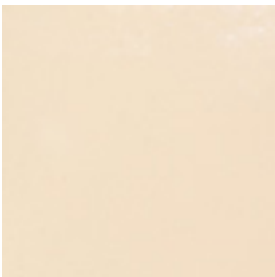
Royal Blue



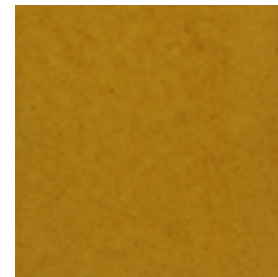
Midnight



Black



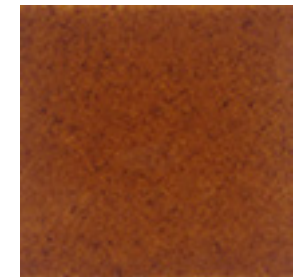
Magnolia



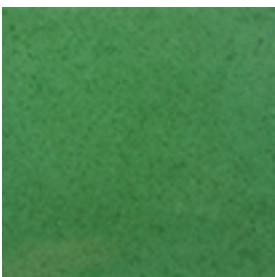
Mustard



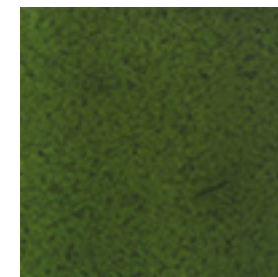
Orche



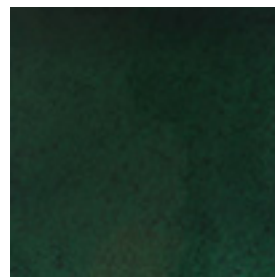
Victorian Brown



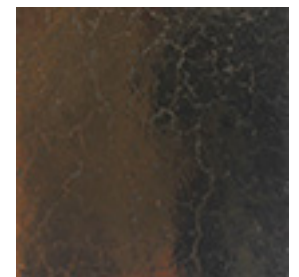
Cut Grass



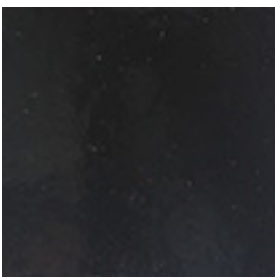
Jade



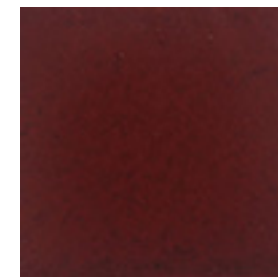
Victorian Green



Weathered Bronze



Treacle



Rich Burgundy

We have 18 standard colours available, however, almost any colour from the RAL selector or Pantone colour finder can be applied if required.

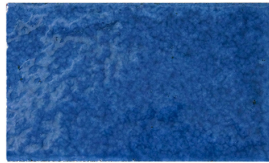
Perfect for internal and external use as they are classified as F2, suitable for use in severe exposure conditions.



# Additional Fittings



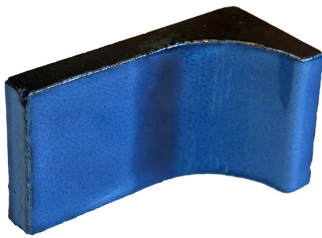
Standard Brick Slip



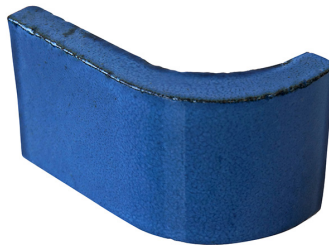
Brick Slip Header



Half Brick Slip



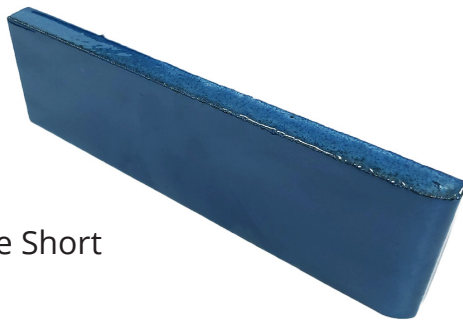
Curved Corner Internal



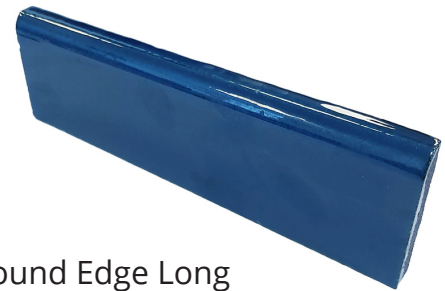
Curved Corner External



Pistol Corner



Round Edge Short



Round Edge Long



Showcase Sample Box

## Contact Us

If you are an architect or specifier working on a project, please contact us to request your free showcase box of brick slip samples.

**Call:**

[01782 281617](tel:01782281617)

**Email:**

[sales@hesmith.co.uk](mailto:sales@hesmith.co.uk)

**Web:**

[www.ecoglazedbrickslips.com](http://www.ecoglazedbrickslips.com)





---

H&E SMITH

---

Specialist Tile Manufacturers  
& Distributors Since 1926

The beauty, grace and elegance of a traditionally crafted tile is an  
inspiration that helps create truly wonderful things.

[www.hesmith.co.uk](http://www.hesmith.co.uk)