





3No. MULTICORE CABLES & 6No. DC CABLES. CABLE MANAGEMENT UTILISED.

CTIL 300mm WIDE CABLE TRAY UNDERNEATH

CTIL (TEF) 1No. A134521R0v06 ANTENNA AT 21.95m MEAN, BEARING 300° E.T.N. I.D. No. EQU900234979 INSTALLED ON YOKE BRACKET

3No. YOKE BRACKETS c/w 2No. CHS60.30x5mm, 2.5m LONG ANTENNA SUPPORT POLES INSTALLED ON TRIPOD. FACEFRAME CONNECT FROM TRIPOD TO QUADPOD C/W 2No. CHS60.30x5mm, SUPPORT POLES  
 CTIL (TEF) 1No. L08/09 AHPMDA RRU, 1No. L18/L21 AHEGB 4WAY RRU & 1No. L23 AZNC 8WAY RRU I.D. No's. 483662, 431778 & 431777 INSTALLED ON RRU MOUNTING RAIL c/w 2No. CHS60.30x5mm, 1.0m LONG SUPPORT POLES. CTIL (TEF) 1No. U9 FHDB RRU I.D. No. 431780 INSTALLED ON REAR OF ANTENNA SUPPORT POLE  
 1No. C2 8/9 COMBINER INSTALLED ON ANTENNA POLE  
 2No. ODDC BOXES INSTALLED ON FACEFRAME SUPPORT POLES

MAIN ENTRANCE TO BUILDING

CTIL 2No. RRUS I.D. No. 354217 & 402062 AND 1No. ERS800 I.D. No. 384047 AND 2No. ERS2100 I.D. No. 394013 INSTALLED ON FREESTANDING FRAME.

CTIL (TEF) 1No. A134521R0v06 ANTENNA AT 21.95m MEAN, BEARING 190° E.T.N. I.D. No. EQU900234978 INSTALLED ON YOKE BRACKET

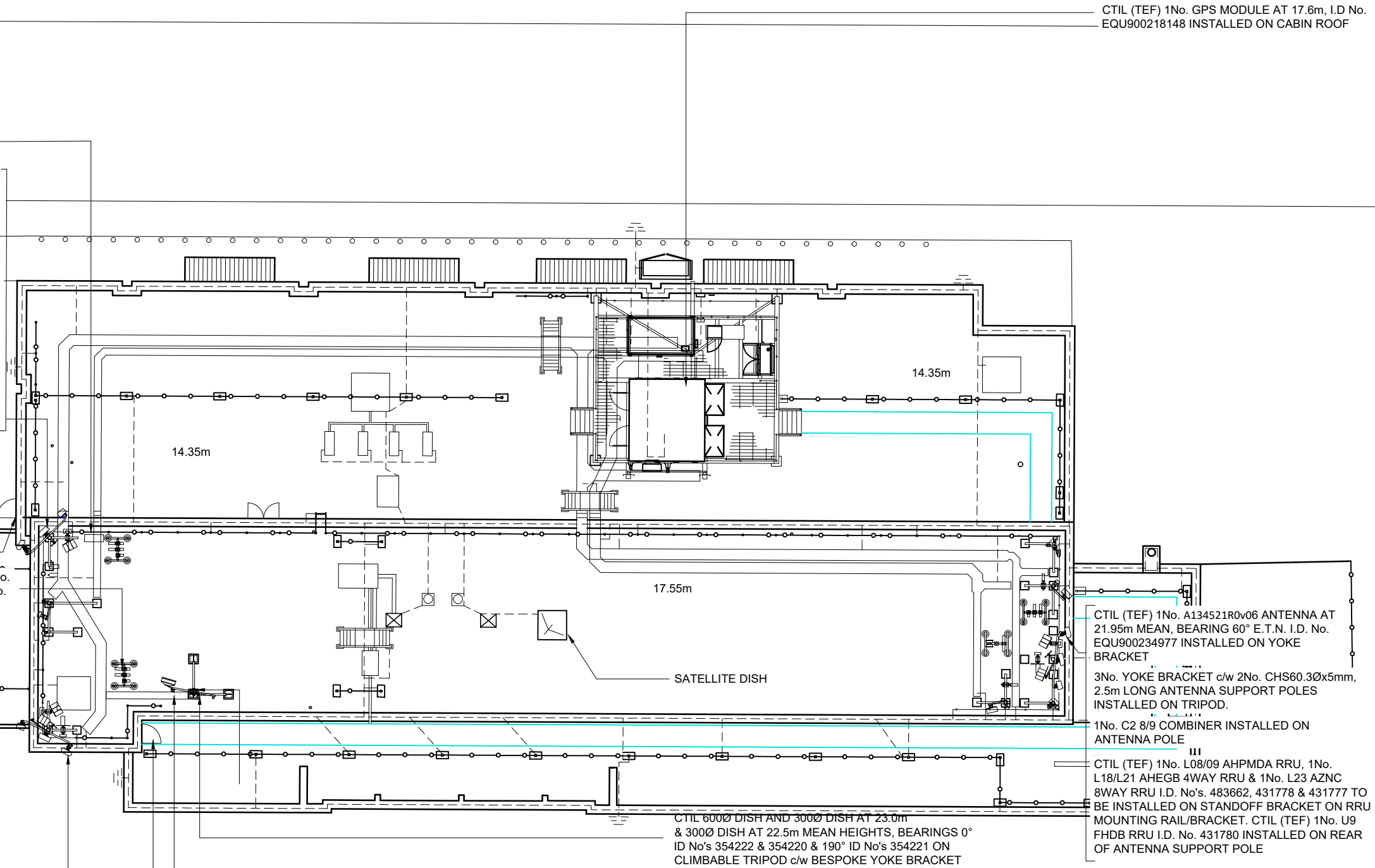
3No. YOKE BRACKET c/w 2No. CHS60.30x5mm, 2.5m LONG ANTENNA SUPPORT POLES INSTALLED ON TRIPOD.

1No. C2 8/9 COMBINER INSTALLED ON ANTENNA POLE

CTIL (TEF) 1No. L08/09 AHPMDA RRU, 1No. L18/L21 AHEGB 4WAY RRU & 1No. L23 AZNC 8WAY RRU I.D. No's. 483662, 431778 & 431777 INSTALLED ON STANDOFF BRACKET ON RRU MOUNTING RAIL/BRACKET. CTIL (TEF) 1No. U9 FHDB RRU I.D. No. 431780 INSTALLED ON REAR OF ANTENNA SUPPORT POLE

2No. ODDC BOXES INSTALLED ON SLOPING POLE BRACKET

CTIL (TEF) 1No. GPS MODULE AT 17.6m, I.D. No. EQU900218148 INSTALLED ON CABIN ROOF



SATELLITE DISH

CTIL 6000 DISH AND 3000 DISH AT 23.0m & 3000 DISH AT 22.5m MEAN HEIGHTS, BEARINGS 0° ID No's 354222 & 354220 & 190° ID No's 354221 ON CLIMBABLE TRIPOD c/w BESPOKE YOKE BRACKET

CTIL EXTENSION ROOFWAY SYSTEM 300mm WIDE CABLE TRAY TO ACCOMMODATE 3No. DISH LINKS.

ROOF ACCESS DOOR USED AT TIME OF SURVEY

CTIL (TEF) 1No. A134521R0v06 ANTENNA AT 21.95m MEAN, BEARING 60° E.T.N. I.D. No. EQU900234977 INSTALLED ON YOKE BRACKET

3No. YOKE BRACKET c/w 2No. CHS60.30x5mm, 2.5m LONG ANTENNA SUPPORT POLES INSTALLED ON TRIPOD.

1No. C2 8/9 COMBINER INSTALLED ON ANTENNA POLE

CTIL (TEF) 1No. L08/09 AHPMDA RRU, 1No. L18/L21 AHEGB 4WAY RRU & 1No. L23 AZNC 8WAY RRU I.D. No's. 483662, 431778 & 431777 TO BE INSTALLED ON STANDOFF BRACKET ON RRU MOUNTING RAIL/BRACKET. CTIL (TEF) 1No. U9 FHDB RRU I.D. No. 431780 INSTALLED ON REAR OF ANTENNA SUPPORT POLE

©2020 Cellnex  
 All rights reserved. No part of this publication may be reproduced, stored in a retrieval system or transmitted in any form or by any means (Electronic, Mechanical, Photocopying, Recording or otherwise), without the prior written consent of the Company.

NOTES

**UNDERGROUND SERVICES**  
 UNDERGROUND SERVICES ARE INDICATIVE ONLY. POSITIONS SHOULD BE CONFIRMED ON SITE PRIOR TO ANY DEVELOPMENT

DRAINAGE	---
DUCTS	---
FEEDERS	---
FENCE PLAN	---
GAS	---
LIGHTNING PROTECTION - EARTHING	---
POWER	---
SERVICES UNKNOWN	---
TELECOMS	---
WATER	---

ACCESS ARRANGEMENTS

KEYS:-

ARQVA GATE KEY	△
B KEY	△
C KEY	△
LEGGE KEY	△

SURVEY REQUIRED TO CONFIRM ACCESS KEYS FOR REMAINING ROOMS AND SITE ENTRANCE

BT SKYLINE No.

WC0010

COM-0026651			
A	PLANNING APPLICATION	15/01/24	GBC GBC
ISS	REVISION	DATE	DRN APP



CELLNEX UK  
 R+, 4TH FLOOR, 2 BLA GRAVE STREET, READING, RG1 1AZ  
 Tel. 020 4526 8553

SITE No. 168705  
 HARRISON STREET TE  
 30-40 HARRISON STREET  
 CAMDEN  
 GREATER LONDON 3  
 WC1H 8JF

NGR TQ 30470 82620

OS GRID 530470 182620

TITLE  
 SITE PLAN  
 EXISTING

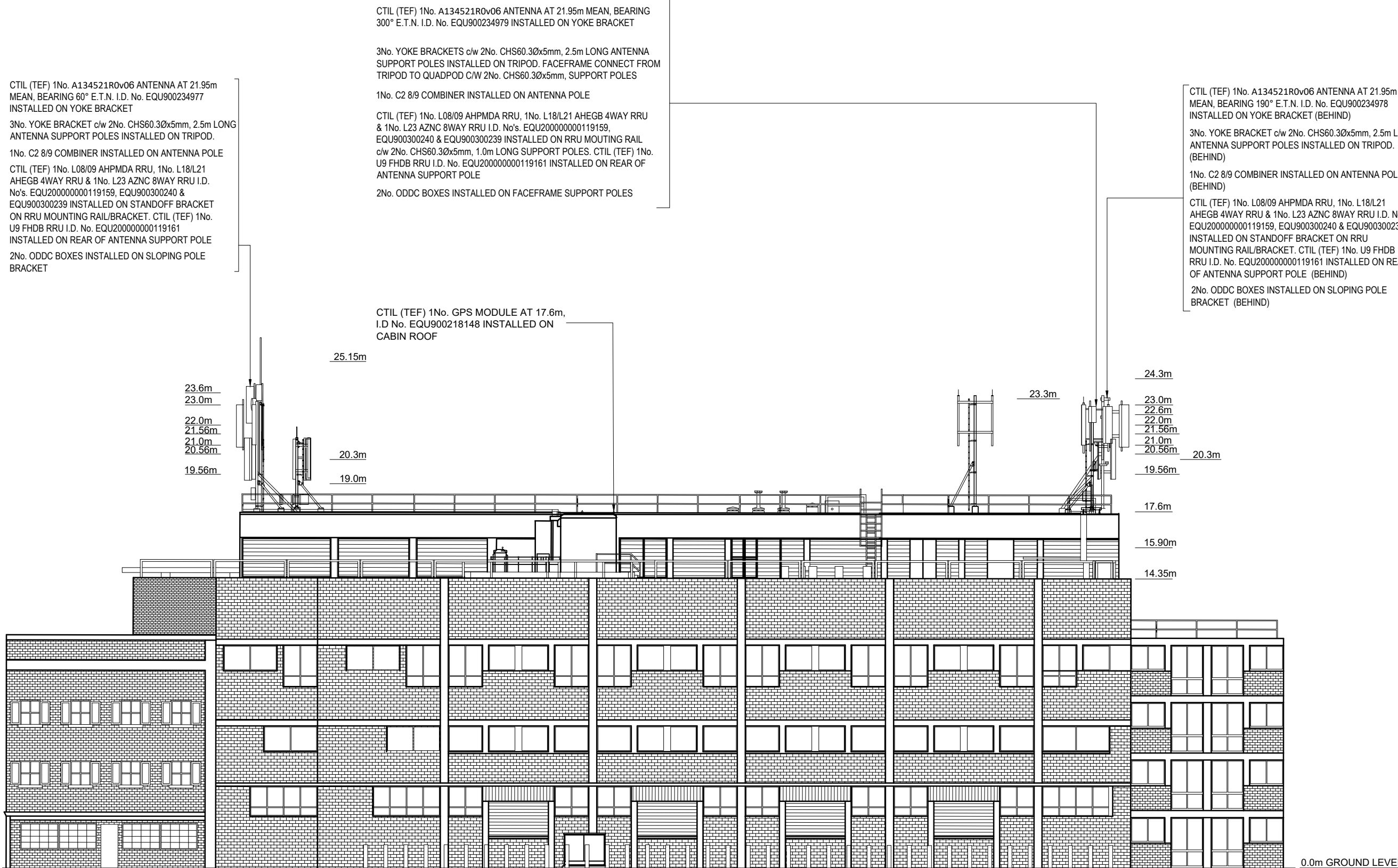
SCALE 1:200

DRAWN IM 15/01/24

APPROVED GBC 15/01/24

DRG No. Sheet 1 of 1 Rev

168705-00-000-MD039 A



CTIL (TEF) 1No. A134521R0v06 ANTENNA AT 21.95m MEAN, BEARING 60° E.T.N. I.D. No. EQU900234977 INSTALLED ON YOKE BRACKET

3No. YOKE BRACKET c/w 2No. CHS60.3Øx5mm, 2.5m LONG ANTENNA SUPPORT POLES INSTALLED ON TRIPOD.

1No. C2 8/9 COMBINER INSTALLED ON ANTENNA POLE

CTIL (TEF) 1No. L08/09 AHPMDA RRU, 1No. L18/L21 AHEGB 4WAY RRU & 1No. L23 AZNC 8WAY RRU I.D. No's. EQU200000000119159, EQU900300240 & EQU900300239 INSTALLED ON STANDOFF BRACKET ON RRU MOUNTING RAIL/BRACKET. CTIL (TEF) 1No. U9 FHDB RRU I.D. No. EQU200000000119161 INSTALLED ON REAR OF ANTENNA SUPPORT POLE

2No. ODDC BOXES INSTALLED ON SLOPING POLE BRACKET

CTIL (TEF) 1No. A134521R0v06 ANTENNA AT 21.95m MEAN, BEARING 300° E.T.N. I.D. No. EQU900234979 INSTALLED ON YOKE BRACKET

3No. YOKE BRACKETS c/w 2No. CHS60.3Øx5mm, 2.5m LONG ANTENNA SUPPORT POLES INSTALLED ON TRIPOD. FACEFRAME CONNECT FROM TRIPOD TO QUADPOD C/W 2No. CHS60.3Øx5mm, SUPPORT POLES

1No. C2 8/9 COMBINER INSTALLED ON ANTENNA POLE

CTIL (TEF) 1No. L08/09 AHPMDA RRU, 1No. L18/L21 AHEGB 4WAY RRU & 1No. L23 AZNC 8WAY RRU I.D. No's. EQU200000000119159, EQU900300240 & EQU900300239 INSTALLED ON RRU MOUNTING RAIL c/w 2No. CHS60.3Øx5mm, 1.0m LONG SUPPORT POLES. CTIL (TEF) 1No. U9 FHDB RRU I.D. No. EQU200000000119161 INSTALLED ON REAR OF ANTENNA SUPPORT POLE

2No. ODDC BOXES INSTALLED ON FACEFRAME SUPPORT POLES

CTIL (TEF) 1No. GPS MODULE AT 17.6m, I.D No. EQU900218148 INSTALLED ON CABIN ROOF

CTIL (TEF) 1No. A134521R0v06 ANTENNA AT 21.95m MEAN, BEARING 190° E.T.N. I.D. No. EQU900234978 INSTALLED ON YOKE BRACKET (BEHIND)

3No. YOKE BRACKET c/w 2No. CHS60.3Øx5mm, 2.5m LONG ANTENNA SUPPORT POLES INSTALLED ON TRIPOD. (BEHIND)

1No. C2 8/9 COMBINER INSTALLED ON ANTENNA POLE (BEHIND)

CTIL (TEF) 1No. L08/09 AHPMDA RRU, 1No. L18/L21 AHEGB 4WAY RRU & 1No. L23 AZNC 8WAY RRU I.D. No's. EQU200000000119159, EQU900300240 & EQU900300239 INSTALLED ON STANDOFF BRACKET ON RRU MOUNTING RAIL/BRACKET. CTIL (TEF) 1No. U9 FHDB RRU I.D. No. EQU200000000119161 INSTALLED ON REAR OF ANTENNA SUPPORT POLE (BEHIND)

2No. ODDC BOXES INSTALLED ON SLOPING POLE BRACKET (BEHIND)

NOTES

BT SKYLINE No.

WC0010

A	COM-0026651 PLANNING APPLICATION	15/01/24	GBC	GBC
ISS	REVISION	DATE	DRN	APP



CELLNEX UK  
R+, 4TH FLOOR, 2 BLA GRAVE STREET, READING, RG1 1AZ  
Tel. 020 4526 8553

SITE No 168705  
HARRISON STREET TE  
30-40 HARRISON STREET  
CAMDEN  
GREATER LONDON 3  
WC1H 8JF

NGR TQ 30470 82620

OS GRID 530470 182620

TITLE  
ELEVATION  
EXISTING  
NORTH

SCALE 1:200

DRAWN IM 15/01/24

APPROVED GBC 15/01/24

DRG No. Sheet 1 of 1 Rev

168705-00-002-MD039 A



NOTES

CTIL (TEF) 12No. 2 CORE TFL DC CABLES & 6No. 3WAY BOBs TO BE REMOVED. EXISTING 3No. MUTICORE FIBRES TO BE REUSED (SUBJECT TO TESTING). PROPOSED 3No. 6 CORE TFL CABLES & 3No. 7 WAY's BIG BOBs TO BE INSTALLED

CSID

PROPOSED CTIL (TEF) 1No. AEQC M-MIMO ANTENNA AT 24.85m MEAN, BEARING 290° E.T.N. I.D. No. TBC TO BE INSTALLED ON PROPOSED ANTENNA MAIN SUPPORT POLE (STACKED ABOVE TEF A134521R0v06)

CTIL (TEF) 1No. A134521R0v06 ANTENNA AT 21.95m MEAN HEIGHTS, BEARING 290° ID No EQU900234979 TO BE RELOCATED TO 22.95m NEW MEAN HEIGHT ONTO PROPOSED ANTENNA MAIN SUPPORT POLE ON CONCRETE PLINTH

PROPOSED CTIL (TEF) 2No. STAND OFF BRACKETS C/W 2No. CHS603.5mm LING ANTENNA SUPPORT POLE TO BE INSTALLED ON EXISTING TRIPOD

CTIL (TEF) 1No. L08/09 AHPMDA RRU, 1No. N07/U09 AHPMDA RRU, 1No. L18/L21 AHEGB 4WAY RRU & 1No. L23 AZNC 8WAY RRU I.D. No's. EQU20000000119159, EQU900300240 & EQU900300239 INSTALLED ON RRU MOUNTING RAIL c/w 2No. CHS60.3Øx5mm, 1.0m LONG SUPPORT POLES.

1No. C2 8/9 COMBINER INSTALLED ON ANTENNA POLE  
 2No. ODDC BOXES INSTALLED ON SLOPING POLE BRACKET

3No. YOKE BRACKETS C/W 3No. CHS60.3x5mm, 2.5m LONG ANTENNA SUPPORT POLES INSTALLED ON TRIPOD TO BE REMOVED

PROPOSED CTIL (TEF) 1No. GCA 7 WAY BIG BOB TO BE INSTALLED

CTIL (TEF) 2No. GCA 3 WAY BOB's TO BE REMOVED

CTIL (TEF) 1No. GPS MODULE AT 17.6m, I.D. No. EQU900218148 INSTALLED ON CABIN ROOF

CTIL (TEF) EQUIPMENT INSTALLED WITHIN CABIN 2

PROPOSED CTIL (TEF) 1No. AEQC M-MIMO ANTENNA AT 25.0m MEAN, BEARING 60° E.T.N. I.D. No. TBC TO BE INSTALLED ON PROPOSED ANTENNA MAIN SUPPORT POLE (STACKED ABOVE TEF A134521R0v06)

CTIL (TEF) 1No. A134521R0v06 ANTENNA AT 21.95m MEAN HEIGHTS, BEARING 60° ID No EQU900234977 TO BE RELOCATED TO 23.10m NEW MEAN HEIGHT ONTO PROPOSED ANTENNA MAIN SUPPORT POLE ON CONCRETE PLINTH

PROPOSED CTIL (TEF) 2No. STAND OFF BRACKETS C/W 2No. CHS603.5mm LING ANTENNA SUPPORT POLE TO BE INSTALLED ON EXISTING TRIPOD

1No. C2 8/9 COMBINER INSTALLED ON ANTENNA POLE

CTIL (TEF) 1No. L08/09 AHPMDA RRU, 1No. N07/U09 AHPMDA RRU, 1No. L18/L21 AHEGB 4WAY RRU & 1No. L23 AZNC 8WAY RRU I.D. No's. EQU20000000119159, EQU900300240 & EQU900300239 INSTALLED ON RRU MOUNTING RAIL c/w 2No. CHS60.3Øx5mm, 1.0m LONG SUPPORT POLES.

2No. ODDC BOXES INSTALLED ON SLOPING POLE BRACKET

PROPOSED CTIL (TEF) 1No. GCA 7 WAY BIG BOB TO BE INSTALLED

CTIL (TEF) 2No. GCA 3 WAY BOB's TO BE REMOVED

PROPOSED CTIL (TEF) B2 AEQC AT 21.30m AGL 190° E.T.N. I.D. No. TBC TO BE INSTALLED BELOW CTIL (VF) 1No. AIR 3227 ANTENNA

CTIL (TEF) 1No. A134521R0v06 ANTENNA AT 21.95m MEAN HEIGHTS, BEARING 190° ID No EQU900234978 INSTALLED ON YOKE BRACKET

1No. C2 8/9 COMBINER INSTALLED ON ANTENNA POLE

CTIL (TEF) 1No. L08/09 AHPMDA RRU, 1No. N07/U09 AHPMDA RRU, 1No. L18/L21 AHEGB 4WAY RRU & 1No. L23 AZNC 8WAY RRU I.D. No's. EQU20000000119159, EQU900300240 & EQU900300239 INSTALLED ON RRU MOUNTING RAIL c/w 2No. CHS60.3Øx5mm, 1.0m LONG SUPPORT POLES.

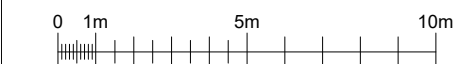
PROPOSED CTIL (TEF) 1No. GCA 7 WAY BIG BOB TO BE INSTALLED

CTIL (TEF) 2No. GCA 3 WAY BOB's TO BE REMOVED

CTIL 600Ø DISH AND 300Ø DISH AT 23.0m & 300Ø DISH AT 22.5m MEAN HEIGHTS, BEARINGS 0° ID No's 354222 & 354220 & 190° ID No's 354221 ON CLIMBABLE TRIPOD c/w BESPOKE YOKE BRACKET

CTIL EXTENSIS ROOFWAY SYSTEM 300mm WIDE CABLE TRAY TO ACCOMMODATE 3No. DISH LINKS. ROOF ACCESS DOOR USED AT TIME OF SURVEY

SATELLITE DISH



FEINT DETAILS INDICATE LOCATIONS RESERVED FOR OTHER PROPOSALS WHICH MAY BE THE SUBJECT OF SEPARATE APPLICATIONS

PROJECT No.	COM0026651
	15069425
VFID	89434
CSR	73170
CELL No.	7317002

BT SKYLINE No. WC0010


A	COM-0026651 PLANNING APPLICATION	15/01/24	GBC	GBC
ISS	REVISION	DATE	DRN	APP



CELLNEX UK  
 R+, 4TH FLOOR, 2 BLA GRAVE STREET, READING, RG1 1AZ  
 Tel. 020 4526 8553

SITE No 168705  
 HARRISON STREET TE  
 30-40 HARRISON STREET  
 CAMDEN  
 GREATER LONDON 3  
 WC1H 8JF

NGR TQ 30470 82620  
 OS GRID 530470 182620

TITLE  
 SITE PLAN  
 PLANNING APPLICATION  
 CTIL (TEF)

SCALE 1:200

DRAWN	IM	15/01/24
APPROVED	GBC	15/01/24

DRG No. 168705-22-120-MD039  
 Sheet 1 of 1  
 Rev A

NOTES

CTIL (TEF) 12No. 2 CORE TFL DC CABLES & 6No. 3WAY BOBs TO BE REMOVED. EXISTING 3No. MUTICORE FIBRES TO BE REUSED (SUBJECT TO TESTING). PROPOSED 3No. 6 CORE TFL CABLES & 3No. 7 WAY's BIG BOBs TO BE INSTALLED

CTIL 600Ø DISH AND 300Ø DISH AT 23.0m & 300Ø DISH AT 22.5m MEAN HEIGHTS, BEARINGS 0° ID No's 354222 & 354220 & 190° ID No's 354221 ON CLIMBABLE TRIPOD c/w BESPOKE YOKE BRACKET

PROPOSED CTIL (TEF) 1No. AEQC M-MIMO ANTENNA AT 25.0m MEAN, BEARING 60° E.T.N. I.D. No. TBC TO BE INSTALLED ON PROPOSED ANTENNA MAIN SUPPORT POLE (STACKED ABOVE TEF A134521R0v06)

CTIL (TEF) 1No. GPS MODULE AT 17.6m, I.D. No. EQU900218148 INSTALLED ON CABIN ROOF

CTIL (TEF) 1No. A134521R0v06 ANTENNA AT 21.95m MEAN HEIGHTS, BEARING 60° ID No EQU900234977 TO BE RELOCATED TO 23.10m NEW MEAN HEIGHT ONTO PROPOSED ANTENNA MAIN SUPPORT POLE ON CONCRETE PLINTH

1No. C2 8/9 COMBINER INSTALLED ON ANTENNA POLE

PROPOSED CTIL (TEF) 1No. GCA 7 WAY BIG BOB TO BE INSTALLED

CTIL (TEF) 2No. GCA 3 WAY BOB's TO BE REMOVED

PROPOSED CTIL (TEF) 1No. AEQC M-MIMO ANTENNA AT 24.85m MEAN, BEARING 290° E.T.N. I.D. No. TBC TO BE INSTALLED ON PROPOSED ANTENNA MAIN SUPPORT (STACKED ABOVE TEF A134521R0v06)

CTIL (TEF) 1No. A134521R0v06 ANTENNA AT 21.95m MEAN HEIGHTS, BEARING 290° ID No EQU900234979 TO BE RELOCATED TO 22.95m NEW MEAN HEIGHT ONTO PROPOSED ANTENNA MAIN SUPPORT POLE ON CONCRETE PLINTH

PROPOSED CTIL (TEF) 2No. STAND OFF BRACKETS C/W 2No. CHS603.5mm LING ANTENNA SUPPORT POLE TO BE INSTALLED ON EXISTING TRIPOD

CTIL (TEF) 1No. L08/09 AHPMDA RRU, 1No. N07/U09 AHPMDA RRU, 1No. L18/L21 AHEGB 4WAY RRU & 1No. L23 AZNC 8WAY RRU I.D. No's. EQU200000000119159, EQU900300240 & EQU900300239 INSTALLED ON RRU MOUTING RAIL c/w 2No. CHS60.3Øx5mm, 1.0m LONG SUPPORT POLES.

2No. ODDC BOXES INSTALLED ON SLOPING POLE BRACKET

3No. YOKE BRACKETS C/W 3No. CHS60.3x5mm, 2.5m LONG ANTENNA SUPPORT POLES INSTALLED ON TRIPOD TO BE REMOVED

CTIL (TEF) 1No. L08/09 AHPMDA RRU, 1No. N07/U09 AHPMDA RRU, 1No. L18/L21 AHEGB 4WAY RRU & 1No. L23 AZNC 8WAY RRU I.D. No's. EQU200000000119159, EQU900300240 & EQU900300239 INSTALLED ON RRU MOUTING RAIL c/w 2No. CHS60.3Øx5mm, 1.0m LONG SUPPORT POLES.

1No. C2 8/9 COMBINER INSTALLED ON ANTENNA POLE

PROPOSED CTIL (TEF) B2 AEQC AT 21.30m AGL 190° E.T.N. I.D. No. TBC TO BE INSTALLED BELOW CTIL (VF) 1No. AIR 3227 ANTENNA

1No. C2 8/9 COMBINER INSTALLED ON ANTENNA POLE

PROPOSED CTIL (TEF) 1No. GCA 7 WAY BIG BOB TO BE INSTALLED

CTIL (TEF) 1No. L08/09 AHPMDA RRU, 1No. N07/U09 AHPMDA RRU, 1No. L18/L21 AHEGB 4WAY RRU & 1No. L23 AZNC 8WAY RRU I.D. No's. EQU200000000119159, EQU900300240 & EQU900300239 INSTALLED ON RRU MOUTING RAIL c/w 2No. CHS60.3Øx5mm, 1.0m LONG SUPPORT POLES.

CTIL (TEF) 2No. GCA 3 WAY BOB's TO BE REMOVED

PROPOSED CTIL (TEF) 1No. GCA 7 WAY BIG BOB TO BE INSTALLED

3No. YOKE BRACKET c/w 3No. CHS60.3Ø & 2.5m LONG ANTENNA SUPPORT POLES INSTALLED ON TRIPOD TO BE REMOVED

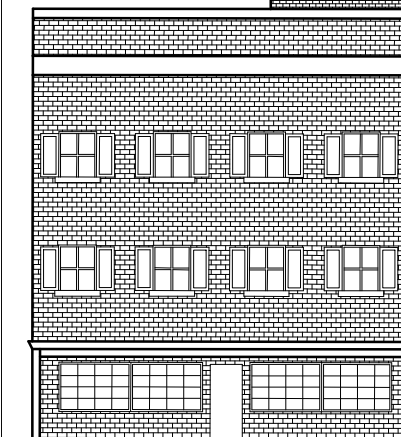
CTIL (TEF) 2No. GCA 3 WAY BOB's TO BE REMOVED

2No. ODDC BOXES INSTALLED ON SLOPING POLE BRACKET

PROPOSED CTIL (TEF) 2No. STAND OFF BRACKETS C/W 2No. CHS603.5mm LING ANTENNA SUPPORT POLE TO BE INSTALLED ON EXISTING TRIPOD

2No. ODDC BOXES INSTALLED ON SLOPING POLE BRACKET

CTIL (TEF) 1No. A134521R0v06 ANTENNA AT 21.95m MEAN HEIGHTS, BEARING 190° ID No EQU900234978 INSTALLED ON YOKE BRACKET



CTIL (TEF) EQUIPMENT INSTALLED WITHIN CABIN 2

0.0m GROUND LEVEL

NORTH ELEVATION

FEINT DETAILS INDICATE LOCATIONS RESERVED FOR OTHER PROPOSALS WHICH MAY BE THE SUBJECT OF SEPARATE APPLICATIONS

PROJECT No.	COM0026651
CSID	15069425
VFID	89434
CSR	73170
CELL No.	7317002

BT SKYLINE No. **WC0010**


A	COM-0026651 PLANNING APPLICATION	15/01/24	GBC	GBC
ISS	REVISION	DATE	DRN	APP

**cellnex**  
 driving telecom connectivity

CELLNEX UK  
 R+, 4TH FLOOR, 2 BLA GRAVE STREET, READING, RG1 1AZ  
 Tel. 020 4526 8553

SITE No **168705**  
 HARRISON STREET TE  
 30-40 HARRISON STREET  
 CAMDEN  
 GREATER LONDON 3  
 WC1H 8JF

NGR TQ 30470 82620  
 OS GRID 530470 182620

TITLE  
 ELEVATION  
 PLANNING APPLICATION  
 CTIL (TEF)

SCALE 1:200

DRAWN	IM	15/01/24
APPROVED	GBC	15/01/24

DRG No. **168705-22-170-MD039** Sheet 1 of 2 Rev **A**