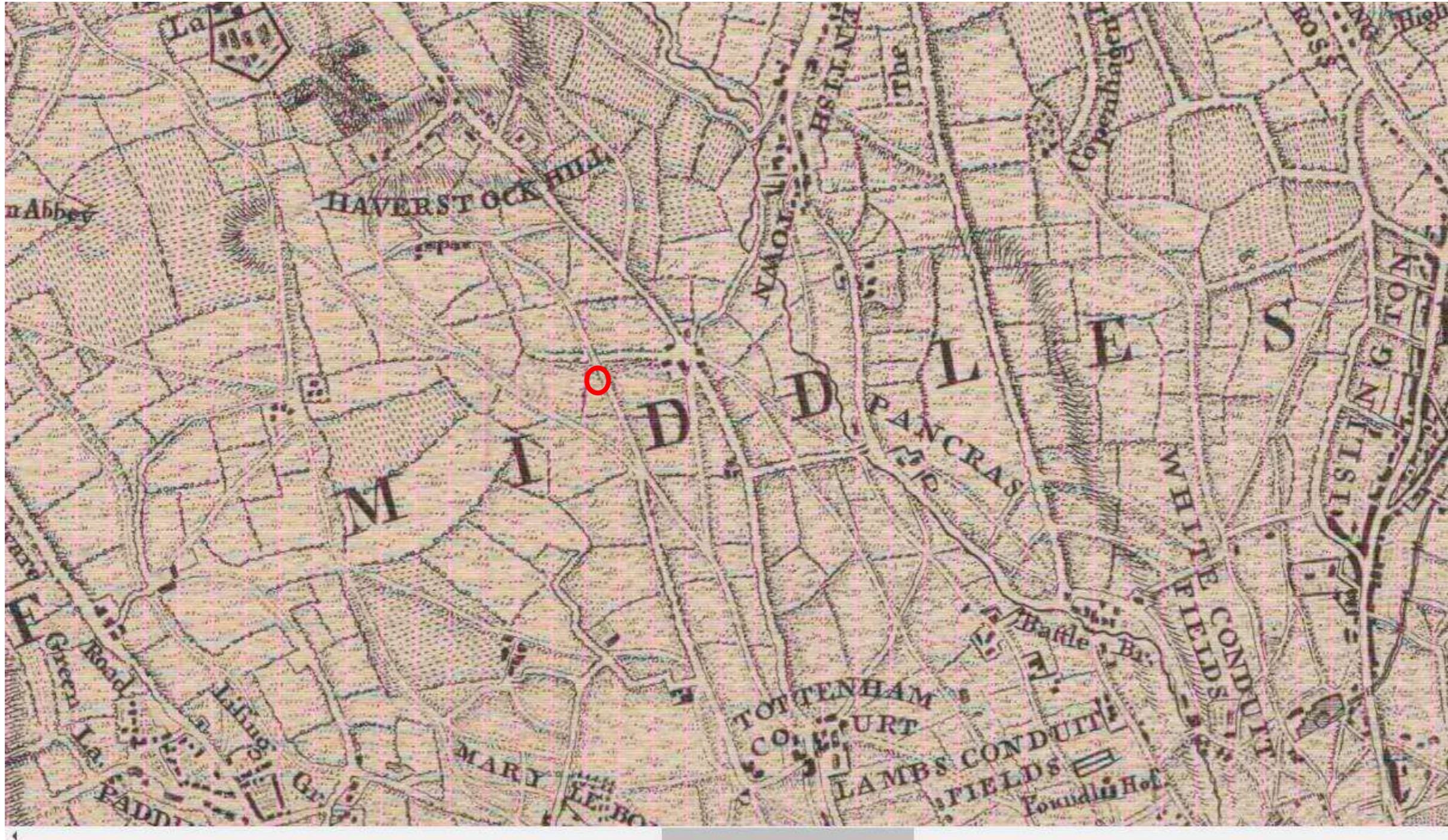


**MAP**

**TITLE**



**Fig 27: Historical Maps - 1748**

A Map of London and the adjacent Country 10 Miles Round, as Survey'd and Publish'd in 16 Sheets, by John Rocque

**DEVELOPMENT**

Main roads (Camden High St/ Hamstead Rd, Haverstock Hill, Kentish Town Rd and Crowndale Rd) present

Some development around Camden Town junction and Crowndale Road junction.

Site shown as pasture

MAP

TITLE



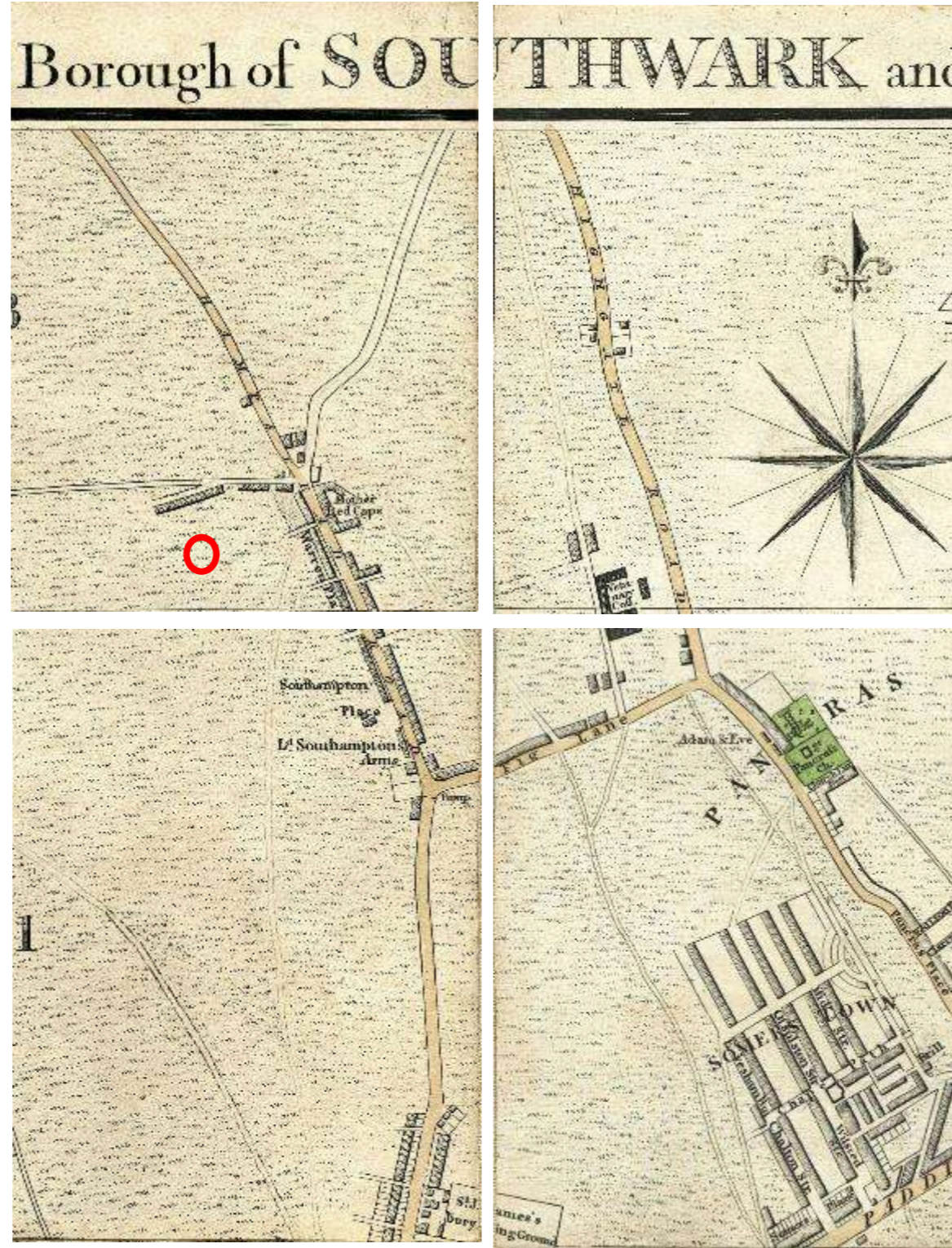
Fig 28: Historical Maps -  
1761

**DEVELOPMENT**

Little change, some  
development opposite end of  
Crowndale Rd (Fig Lane)

**MAP**

**TITLE**



**Fig 29: Historical Maps - 1795**

Cary's New And Accurate Plan Of London And Westminster 1795

**DEVELOPMENT**

Development along Camden High Street between Camden Town and Crowndale Road

Mother Red Caps shown at Camden Town – coach tavern

**MAP**

**TITLE**



**Fig 30: Historical Maps - 1801**

Development of Camden Town to 1801

**DEVELOPMENT**

Some development west of Camden High Street (to east of Arlington Road) via passages off Camden High Street

Setting out of streets on east of Camden High Street

Land areas shown

**MAP**

**TITLE**



**Fig 31: Historical Maps - 1804**

Map of the parish of Saint Pancras in the London borough of Camden; Camden was formerly in Middlesex. By Tompson, J.

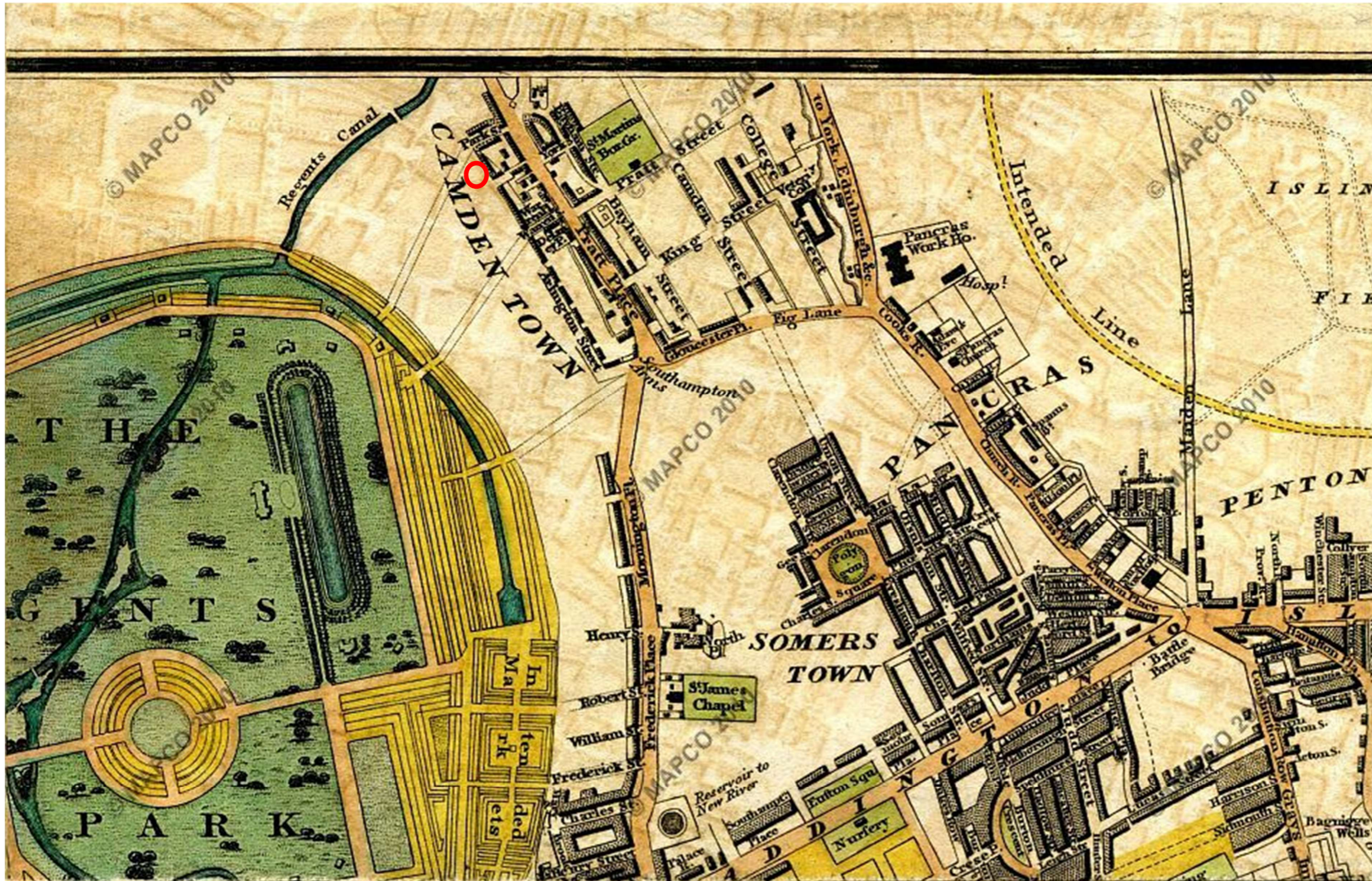
**DEVELOPMENT**

Camden High Street end of Delancy street and south section of Arlington Road present

Land areas shown.

**MAP**

**TITLE**



**Fig 32: Historical Maps - 1817**

Darton's New Plan Of The Cities Of London & Westminster, & Borough Of Southwark, 1817

**DEVELOPMENT**

Regents Park shown – works commenced 1810, opened 1835

Regent's Canal shown (started 1812, opened 1820)

Development on east side of Arlington Road shown - accessed from Camden High St via side streets

Area east of Camden High St set out and development continuing

**MAP**

**TITLE**



**Fig 33: Historical Maps - 1830**

C. & J. Greenwood's Map of London; made from an actual survey in the years 1824, 1825, & 1826

**DEVELOPMENT**

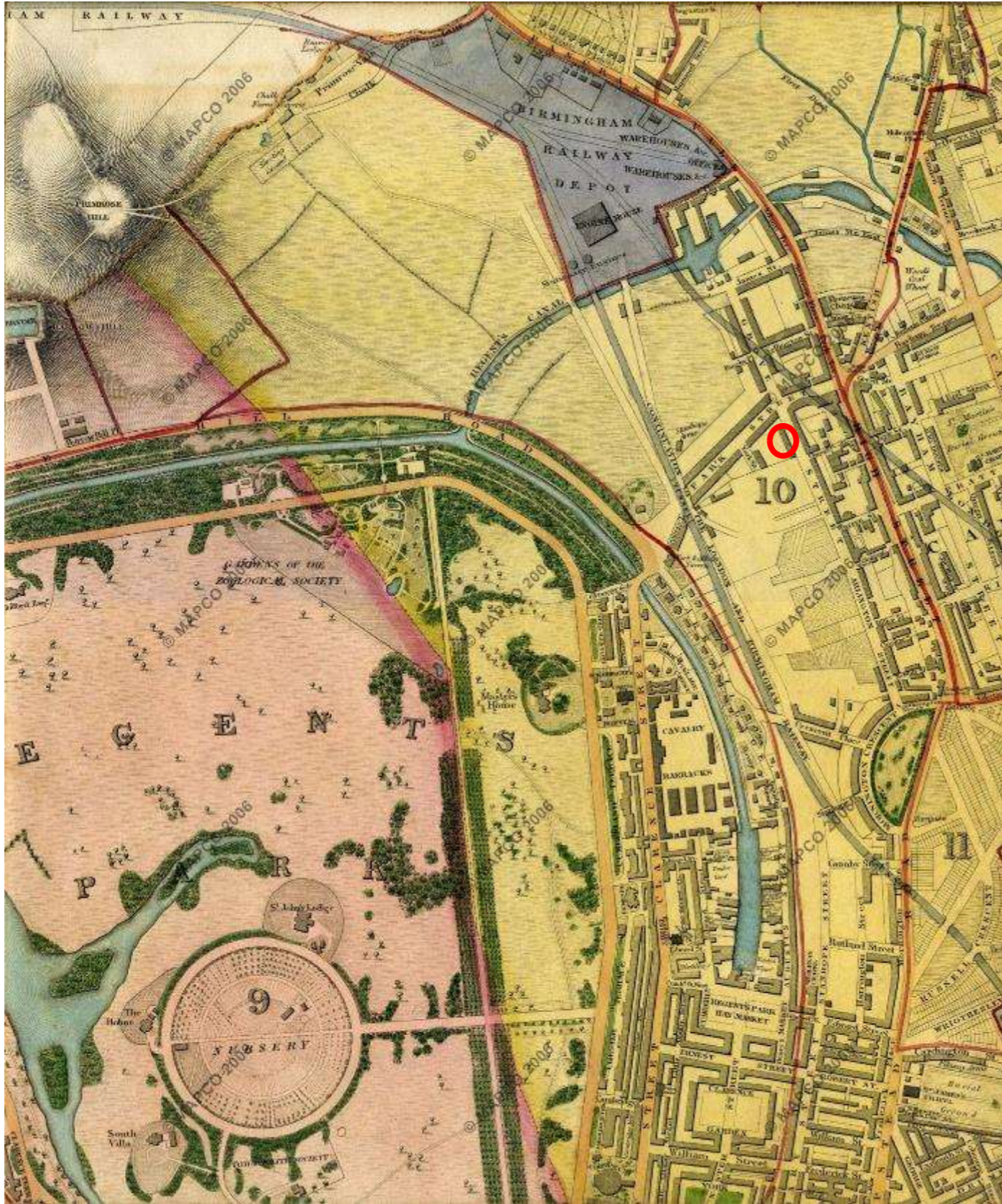
Parkway shown continuing towards Regent's Park

Northern terrace including No161 shown – assumed to run Nos155-169. This appears to match street frontages where single central window present on each floor (buildings further south have two windows per floor).

No other development on west side of Arlington Road (Grove Street/Arlington Street) with area still shown as fields.

**MAP**

**TITLE**



**Fig 34: Historical Maps - 1834**

Topographical Survey Of The Borough Of St. Marylebone 1834

**DEVELOPMENT**

Northern terrace shown.

Railways shown with goods yard north of Camden Town. Line to Euston shown – station opened 1837

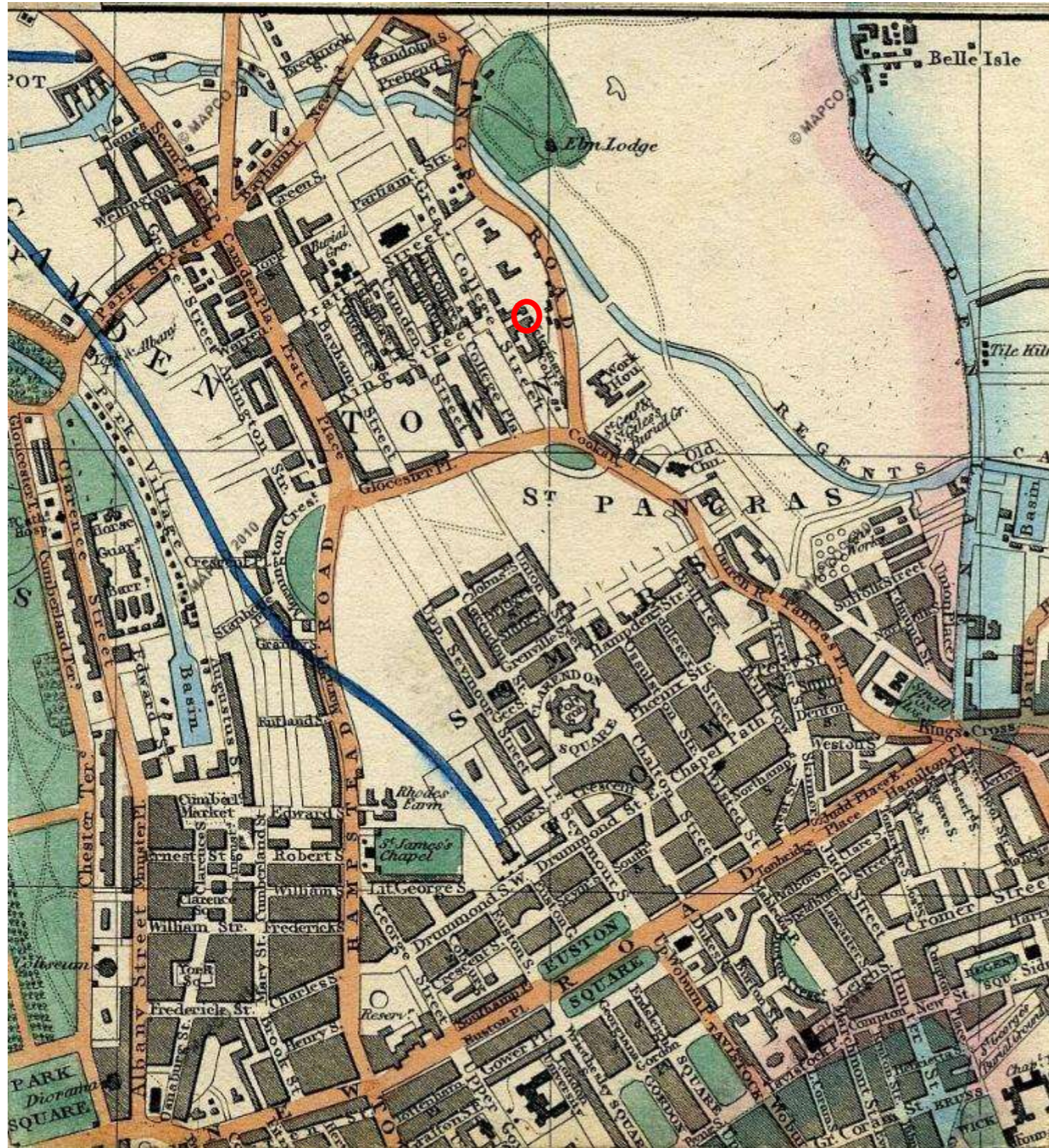
Branch of Regents canal to Cumberland Basin (towards Euston shown)

Arlington Road (Grove Street) shown complete



MAP

TITLE



**Fig 35: Historical Maps - 1844**

Map Of London - Cross's London Guide 1844

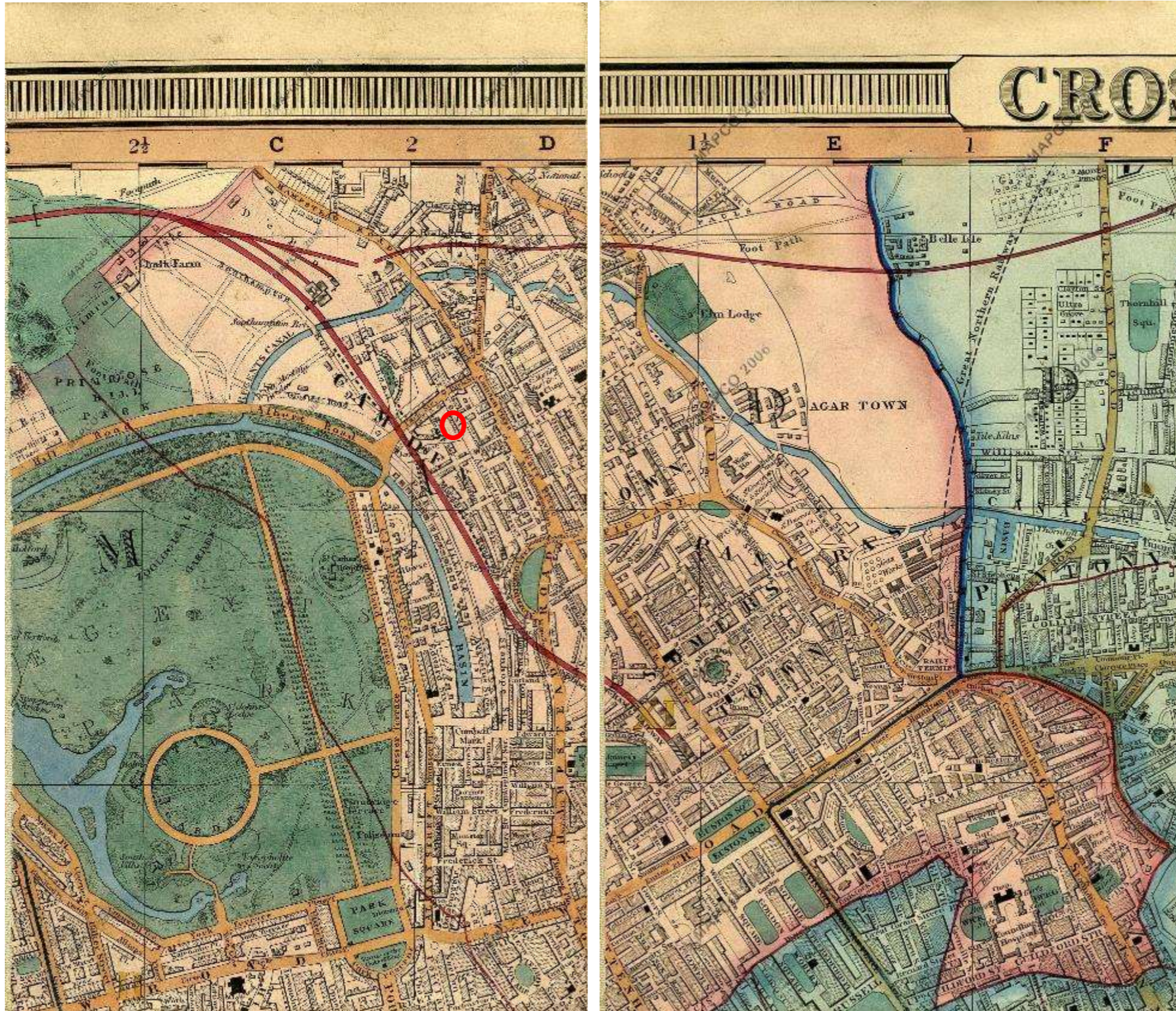
**DEVELOPMENT**

No development on west of Arlington Road shown

Setting out of cross streets between Arlington Road and Albert St shown

MAP

TITLE



**Fig 36: Historical Maps - 1850**

Cross's New Plan Of London 1850

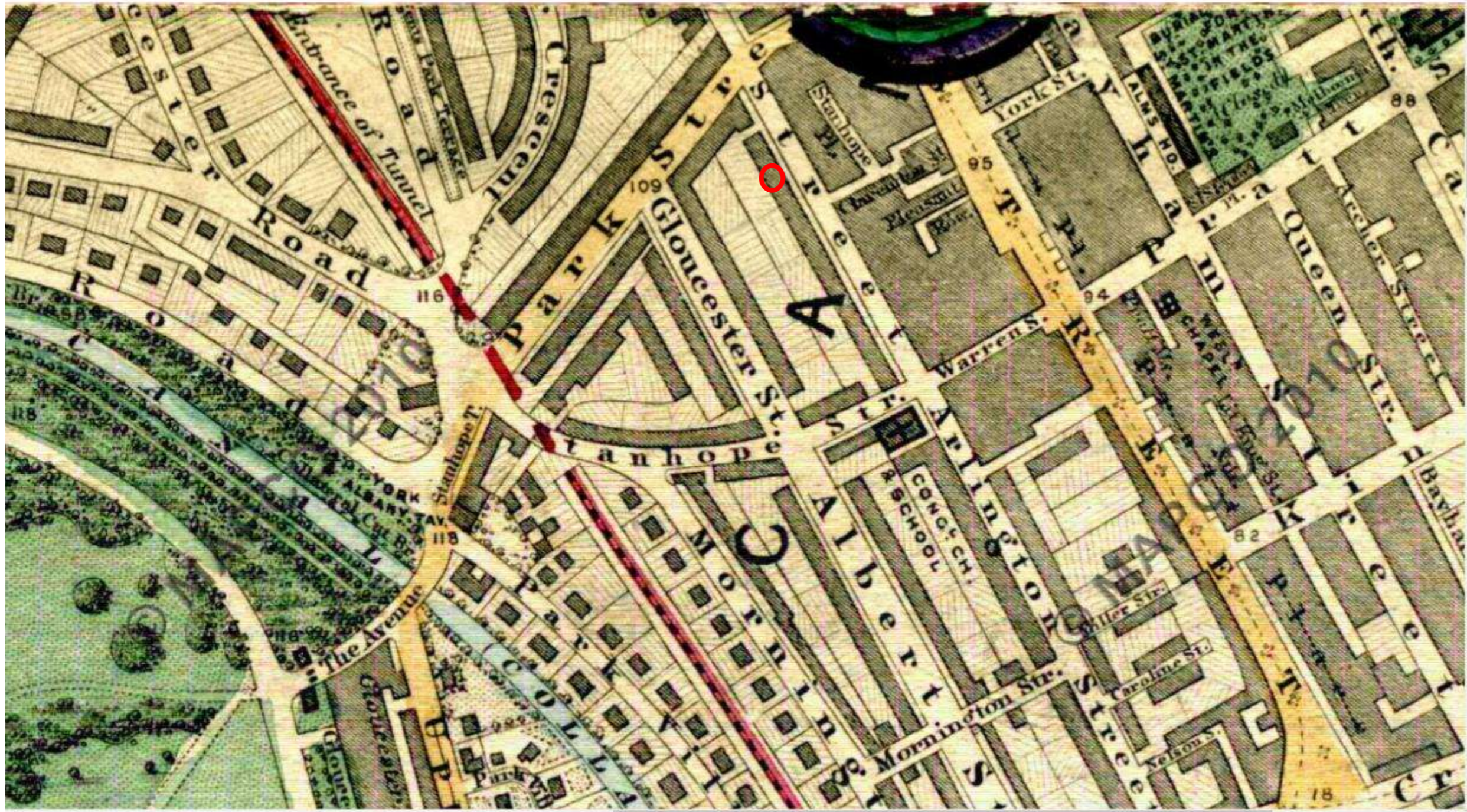
**DEVELOPMENT**

North terrace shown – setting out of Delancey street shown at northern end

Significant development west of Camden High Street

**MAP**

**TITLE**



**Fig 37: Historical Maps - 1864**

Stanford's Library Map Of London And Its Suburbs 1864; Showing All The Proposed Metropolitan Railways and Improvements.

**DEVELOPMENT**

Street plan as present day shown with Delaney St (W Stanhope St) completed)

West side of Arlington Road developed

Park Street Chapel shown built c1850

**MAP**

**TITLE**



**Fig 38: Historical Maps - 1873**

London - Middlesex VII.22  
 Surveyed: 1870, Published: 1873.

**DEVELOPMENT**

Park Chapel school shown in island site

Extend of north terrace shown highlighted

MAP

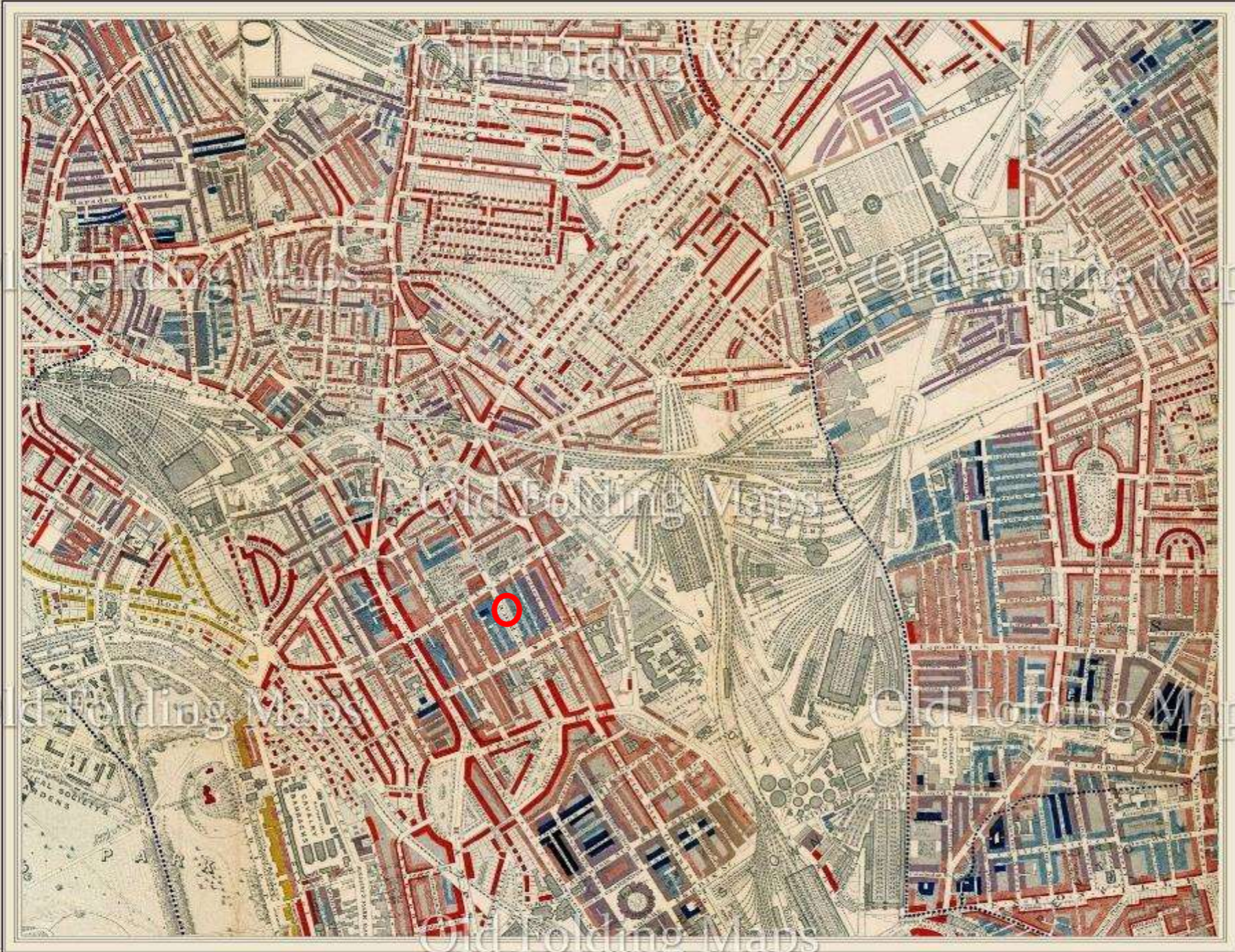
TITLE

**Fig 39: Historical Maps - 1889**

Booth's Map of London Poverty Camden Town, Pentonville, Regents Park circa 1889

**DEVELOPMENT**

Arlington Road (western side at north end) shown as 'Mixed - some comfortable, other poor'



**MAP**

**TITLE**



**Fig 40: Historical Maps - 1894**

London - London VII.22

Revised: 1894,

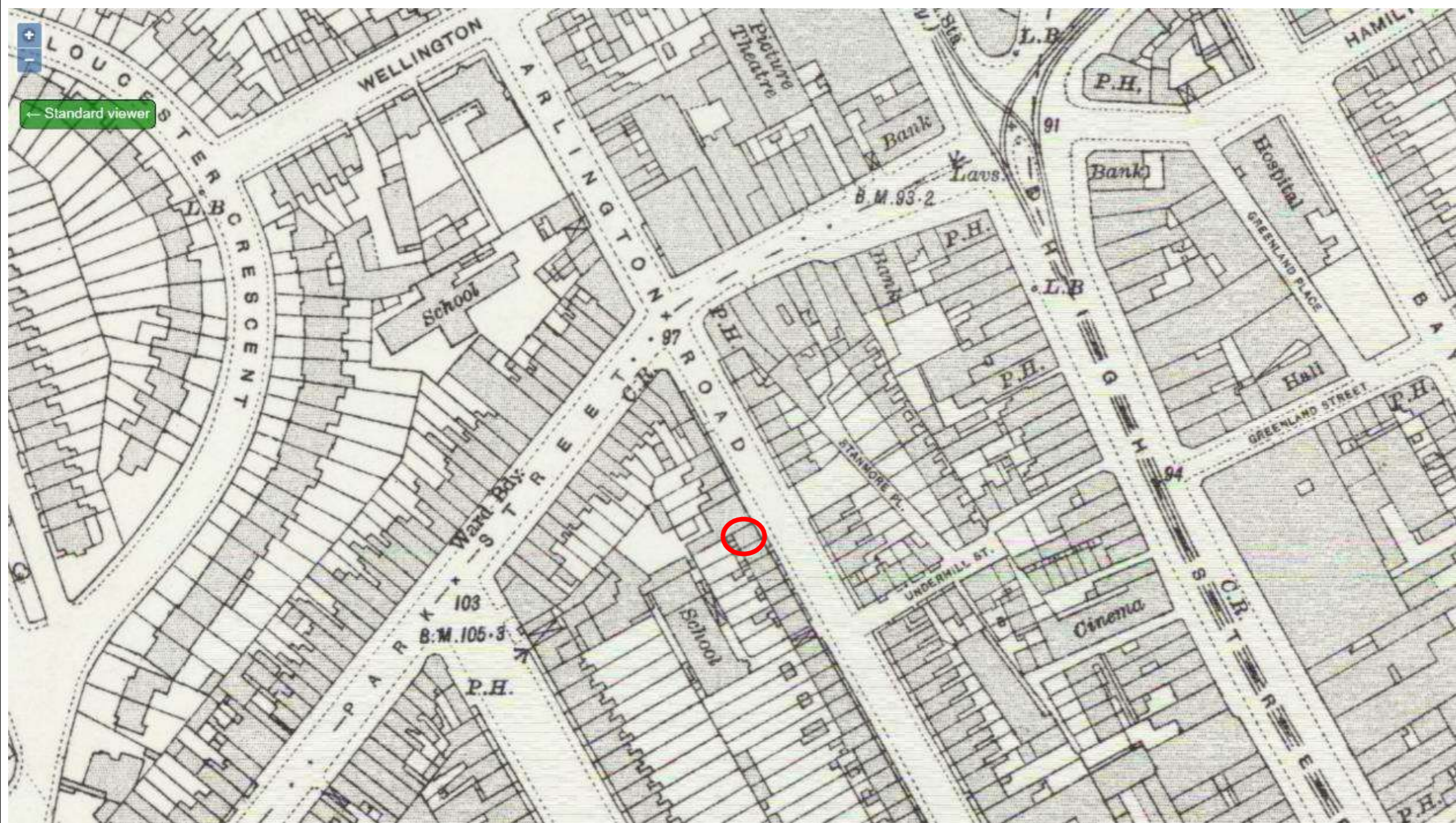
Published: 1895.

**DEVELOPMENT**

Development to west of school towards Albert Street

**MAP**

**TITLE**



**Fig 41: Historical Maps - 1913**

London (1915- Numbered sheets) V.1

Revised: 1913, Published: 1916

**DEVELOPMENT**

No change