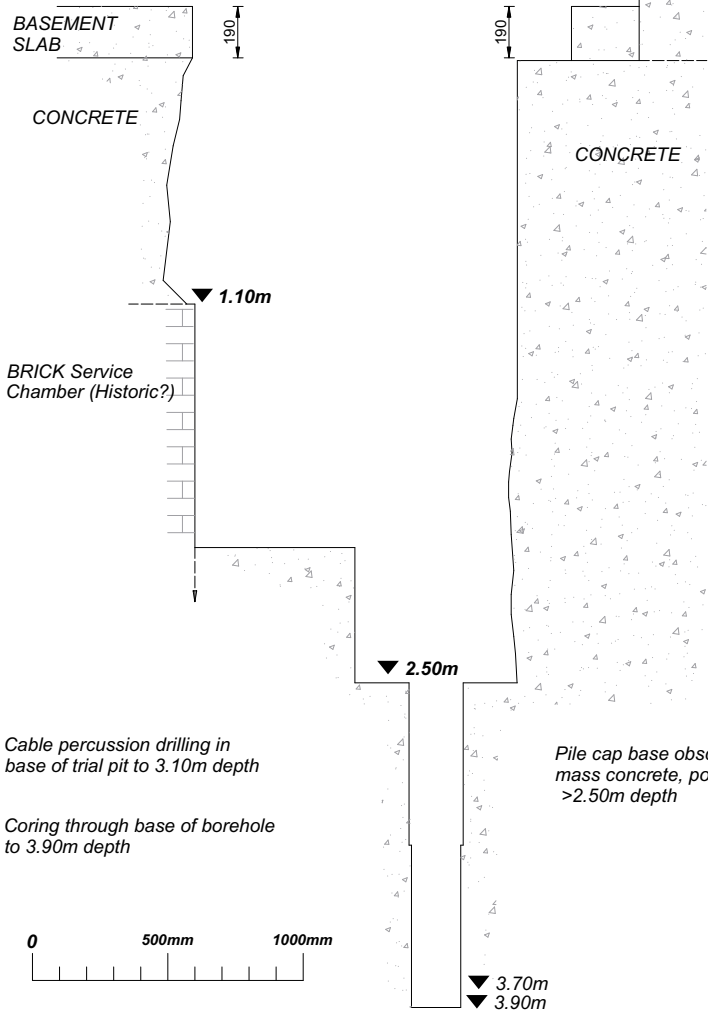
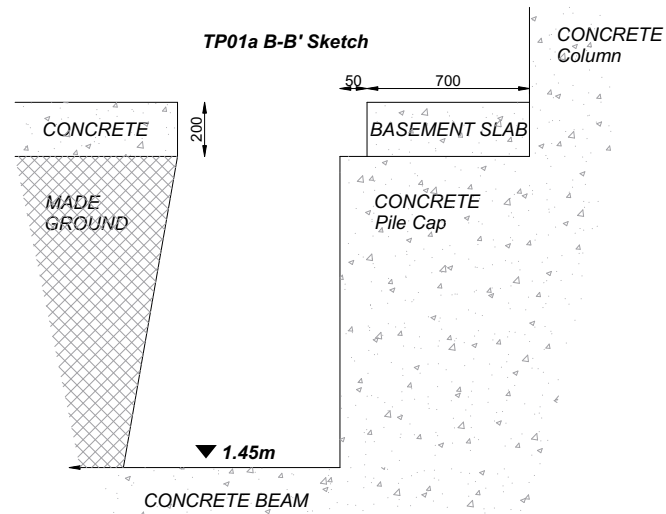


TP01a A-A' Sketch

- 0.00 - 0.19m: BASEMENT SLAB
- 0.19 - 3.10m: MASS CONNCRETE
- 3.10 - 3.70m: CONCRETE (required diamond coring)
- 3.70 - 3.90m: Void or soft material (unclear as coring barrel not recovered)



TP01a B-B' Sketch



- 0.00 - 0.01: ASPHALT WEARING COURSE
- 0.03 - 0.019: BASEMENT SLAB
- 0.19 - 1.45: Brown clayey very gravelly fine to coarse SAND with high cobble content. Locally weakly cemented. (MADE GROUND)
- 1.45m+: CONCRETE BEAM

TP01a Photograph



Rev	Date	By	Chkd	Appd
00	3/11/2023	JAS	WM	DS

A2 Site Investigation

One Westminster Bridge Rd
London SE1 7XW
+44(0)20 7723 0396
www.a2-si.com

Client
Saffron Hill Investments Holdings Ltd

Project Title
Saffron Hill

Drawing Title
TP01a Cross Section Sketch

A2SI Project Number	Rev
38823	00

Drawing Number
38823-A2SI-XX-XX-DR-Y-0002-00

