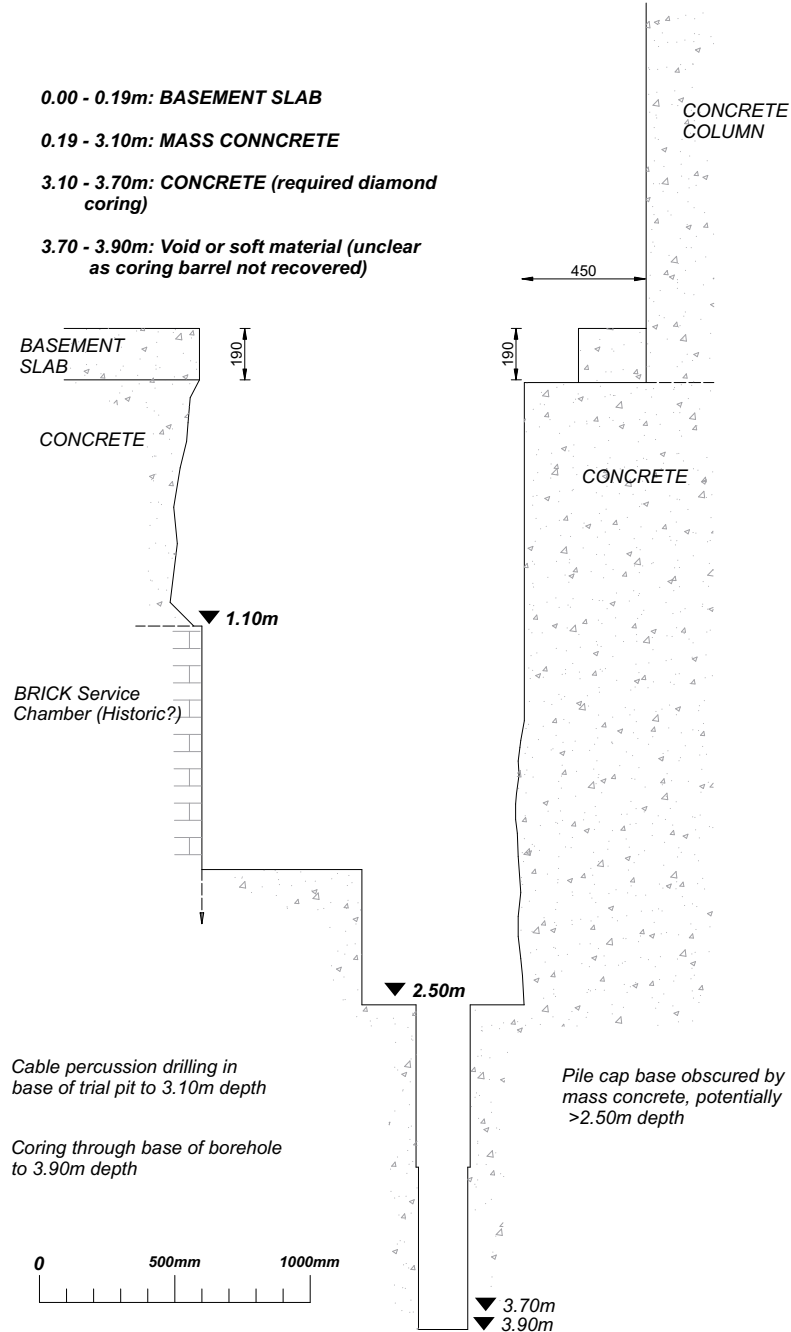
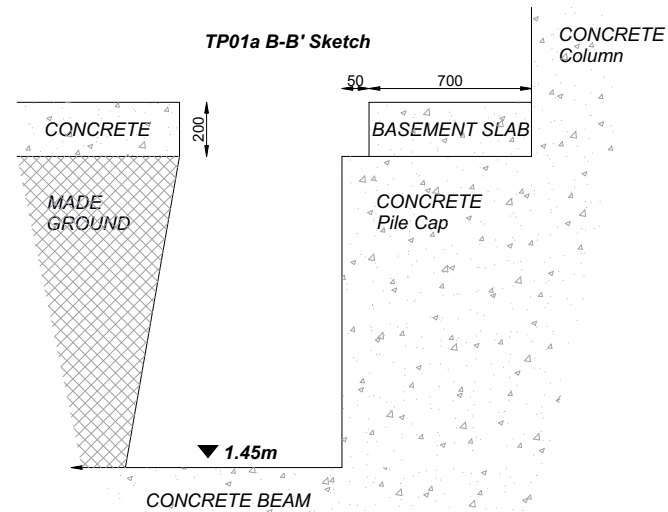


TP01a A-A' Sketch



TP01a B-B' Sketch



**0.00 - 0.01: ASPHALT WEARING COURSE**

**0.03 - 0.019: BASEMENT SLAB**

**0.19 - 1.45: Brown clayey very gravelly fine to coarse SAND with high cobble content. Locally weakly cemented. (MADE GROUND)**

**1.45m+: CONCRETE BEAM**

TP01a Photograph



## A2 Site Investigation

One Westminster Bridge Rd  
 London SE1 7XW  
 +44(0)20 7021 0396  
 www.a2-si.com

Client

Saffron Hill Investments Holdings Ltd

Project Title

Saffron Hill

Drawing Title

TP01a Cross Section Sketch

A2SI Project Number  
 38823

Rev  
 00

Drawing Number

38823-A2SI-XX-XX-DR-Y-0002-00



Project Saffron Hill				Trial Pit No TP01a	
Job No 38823	Start 13/10/2023 End 27/10/2023	Ground Level (mOD) 12.45	Co-Ordinates (Local Grid) E 531434.00 N 181956.00		Depth (m) 2.50
Client Saffron Hill Investment Holdings Ltd			Sheet Sheet 1 of 1		Status FINAL

SAMPLES & TESTS			Stratum Description	Depth (thickness)	Reduced Level	Water	Legend
Depth (m)	Type No	Test Result					
0.40	ES 1		ASPHALT. (PREMIUM PARKING BAY SURFACE COURSE) Light grey CONCRETE. 55-65% aggregate of angular to rounded fine to coarse of flint and type-1 material. Matrix is fine and medium sand. With occasional voids <4mm diameter. (BASEMENT SLAB) Extremely weak light grey CONCRETE. Clasts are sub-angular to well rounded fine to coarse predominantly of flint and type-1 material. Matrix is fine to coarse sand size. (MASS CONCRETE) 0.22 to 1.50m - ... with (traces) of soil recorded on eastern side of excavation constituting clayey gravelly sand.	0.00 (0.03) 0.03 (0.19) 0.22	12.42  12.23		
				(2.28)			
			End of Pit at 2.50m		9.95		

General Remarks

1. Trial pit scanned with GPR, CAT & Genny prior to drilling.
2. Trial Pit stable on completion.
3. No groundwater encountered.
4. Borehole backfilled with arisings and reinstated as per original condition.