

notes

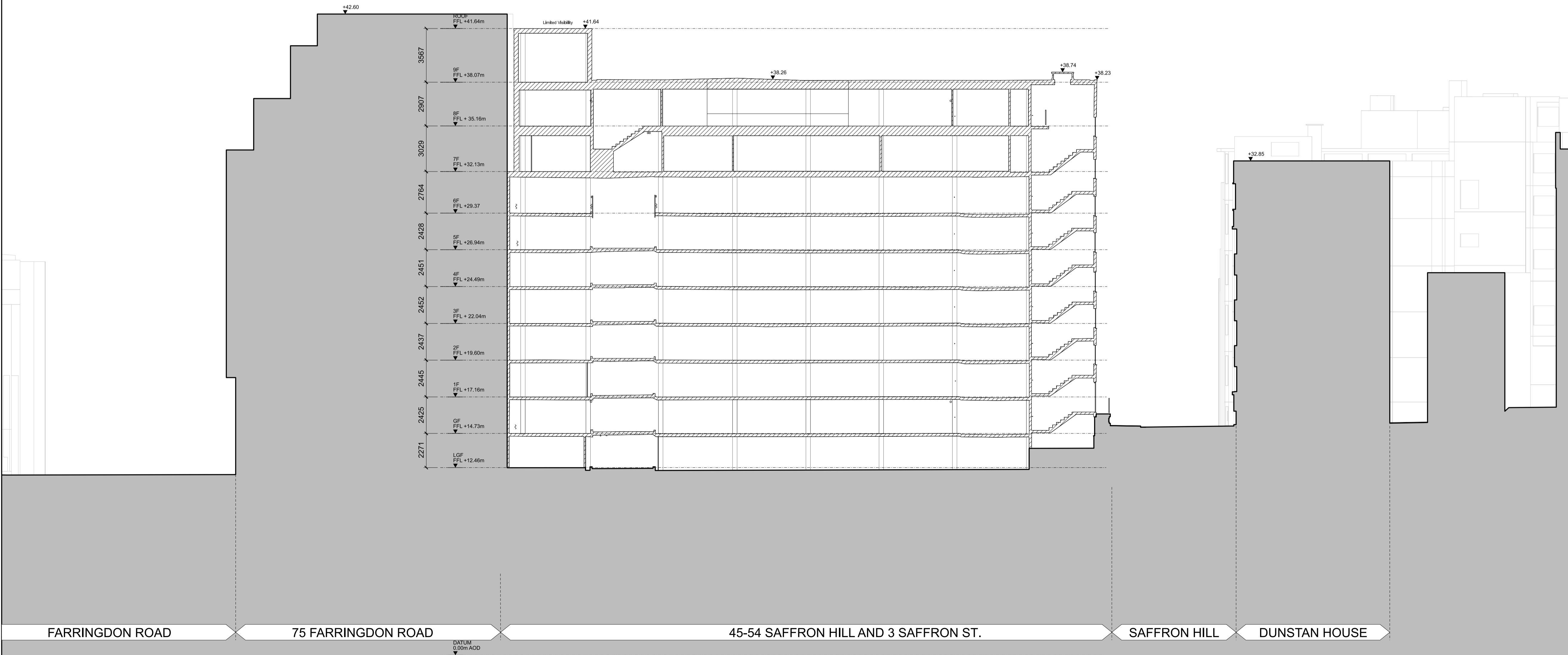
When this drawing is issued in uncontrolled CAD format it will be accompanied by a PDF version and is issued to enable the recipient to prepare their own documents / models / drawings for which they are solely responsible.

The recipient should report all drawing errors, omissions and discrepancies to the architect. All dimensions should be checked on site by the contractor and such dimensions shall be the contractor's responsibility.

Allford Hall Monaghan Morris Limited accepts no responsibility or liability for:
 -Any use of this drawing by parties other than the party for whom it was prepared or for purposes other than those for which it was prepared
 -Any alterations or additions to or discrepancies arising out of changes to the background information on which the drawings are based that was current at the time of issue, and which occur to that information after it has been issued by AHMM
 -Any loss or degradation of the information held in this drawing resulting from the translation from the original file format to any other file format or from the recipient's reading of it in any other programme or any version of the programme other than that which was used to prepare it
 -The accuracy of survey information provided by others or for any costs, claims, proceedings and expenses arising out of reliance on such information
 Any scaling from this drawing other than by the local planning authority solely for the purposes of the planning application to which it relates

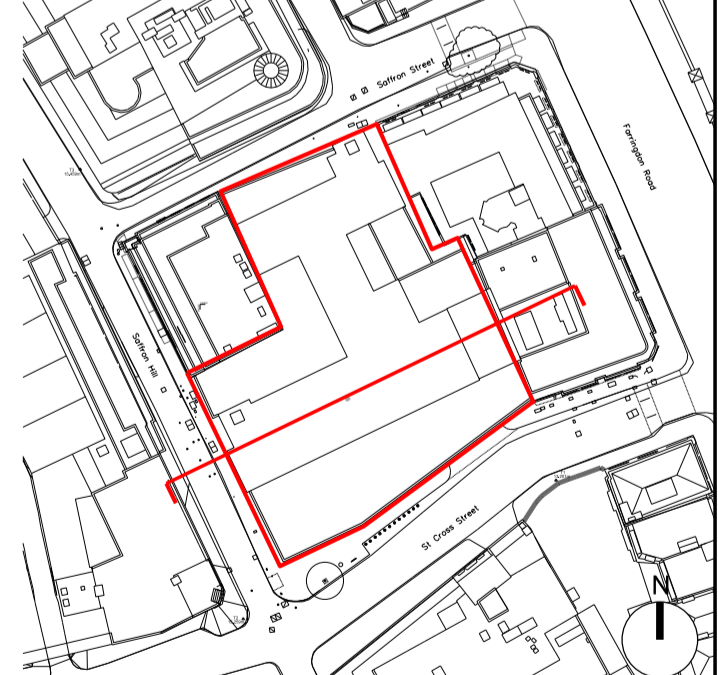
The drawing shows the general arrangement together with the nominal sizes of selected elements and components. The information shown indicates the design intent of the architect and is to be read in conjunction with the performance specification. The Contractor must include for all design development and coordination required to complete the works.

key



P00 PL 14/02/24 For Planning Issue

| Rev | Status | Date | Description |
|----------|--------|------|-------------|
| key plan | | | |



ALLFORD HALL MONAGHAN MORRIS

ARCHITECTS Ltd.
 MORELANDS, 5-23 OLD STREET LONDON EC1V 9HL
 TEL 020 7251 5261 FAX 020 7251 5123 WEB WWW.AHMM.CO.UK

client
Saffron Hill Investment Holdings Ltd

project name
SAFFRON HILL

drawing title
**SECTION 1 (EAST - WEST)
 EXISTING**

| drawn | checked | scale | wp | stage | status | revision |
|-------|---------|----------|----|-------|--------|----------|
| NE | BB | 1:150@A1 | 00 | 02 | PL | P00 |

| project | originator | volume | level | type | role | drawing no. |
|---------|------------|--------|-------|------|------|-------------|
| 22068 | AHMM | ZZ | XX | DR | A | PL031 |