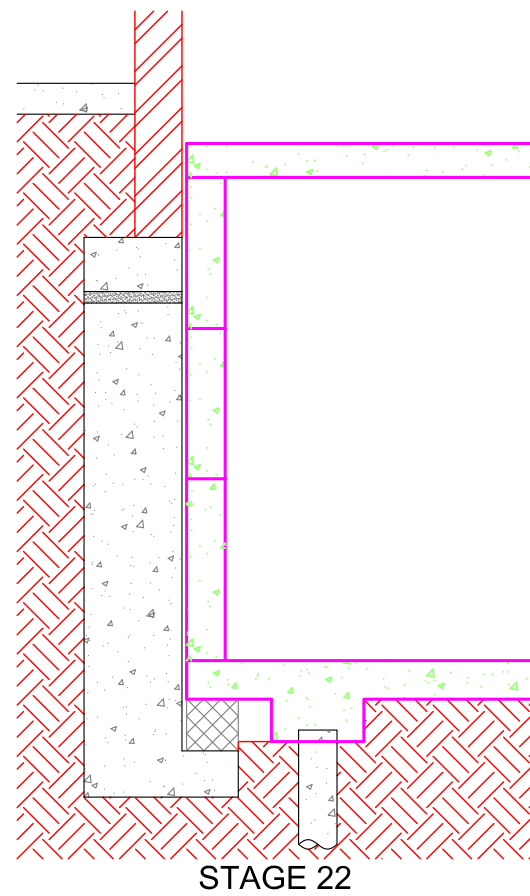
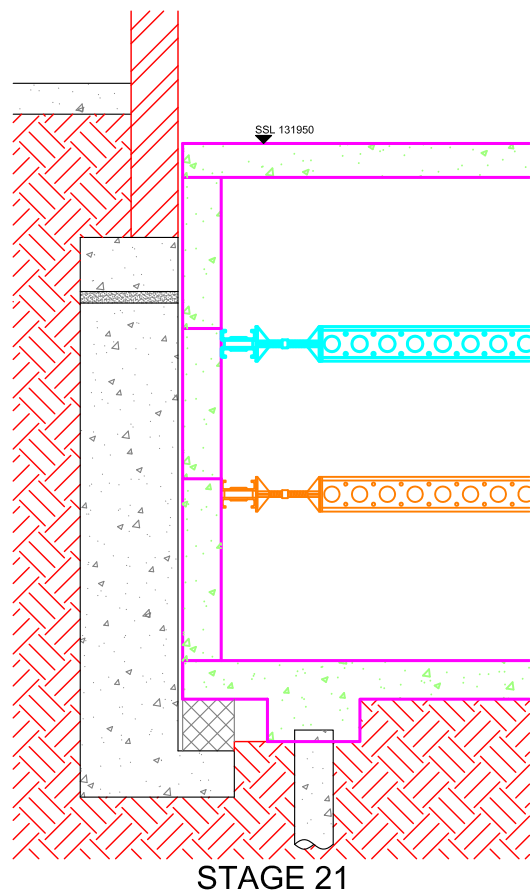
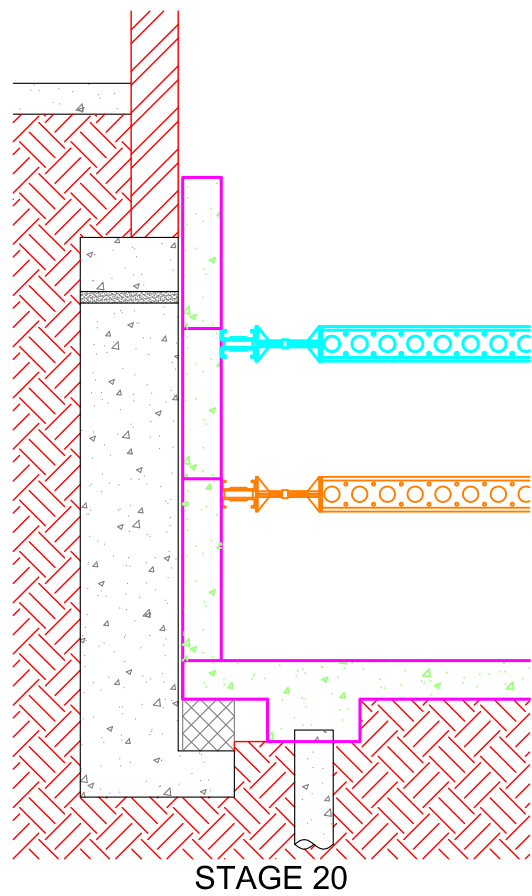
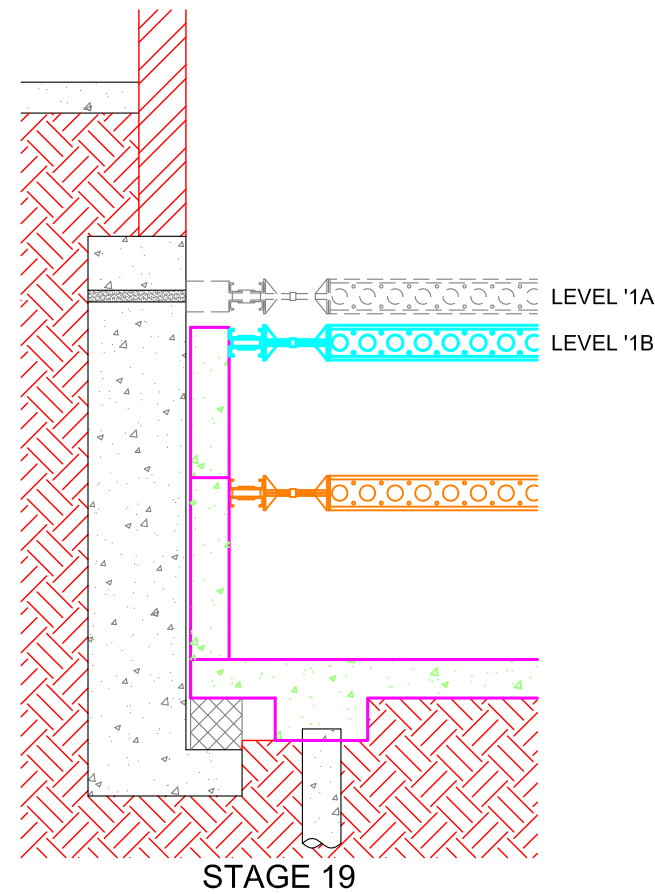
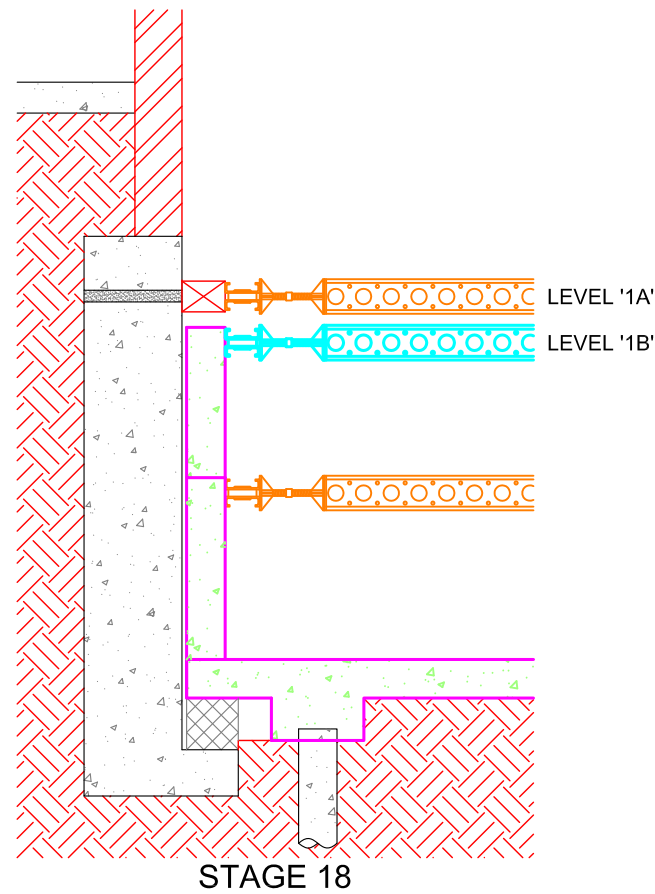
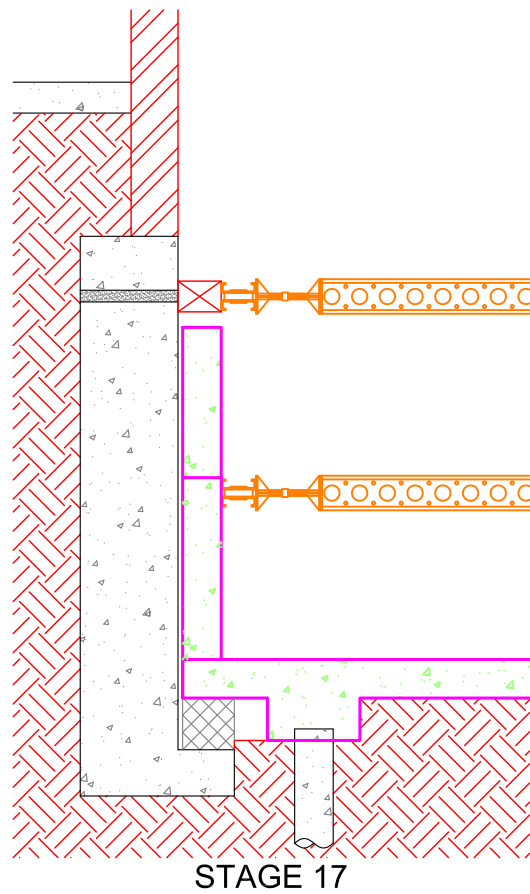
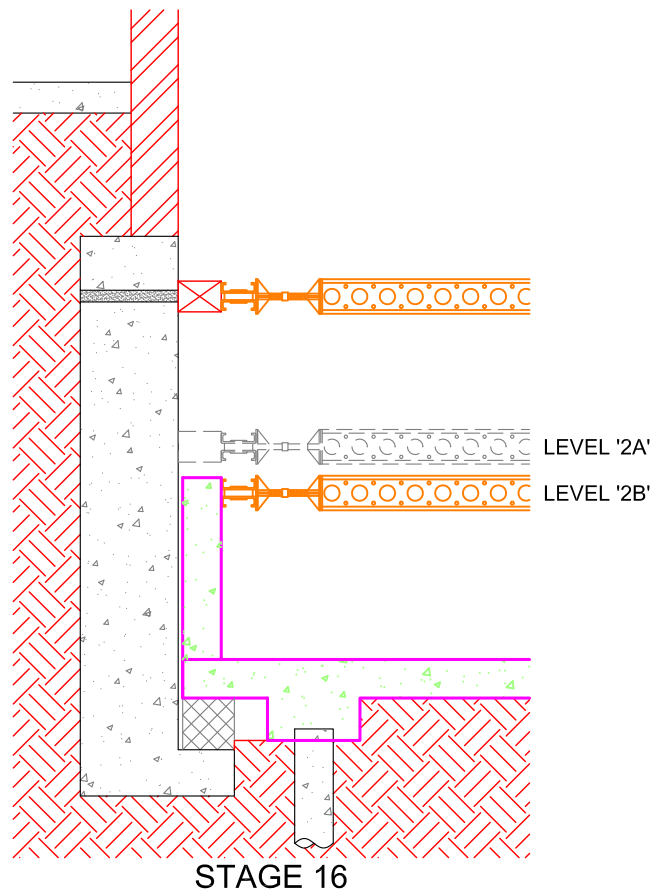


SECTION SHOWN HERE IS THE LEFT SIDE OF SECTION 1 - 1 ON HORWITZ ASSOC. DWG. F - 03 - C1




NOTES:
- THIS DRAWING IS TO BE READ IN CONJUNCTION WITH THE TEMPORARY WORKS PACKAGE
- THIS DRAWING SHOWS THE INDICATIVE CONSTRUCTION SEQUENCE ONLY & DOES NOT SHOW CONSTRUCTION DETAILS
- FOR CONSTRUCTION DETAILS REFER TO THE PERMANENT WORKS STRUCTURAL DRAWINGS & THE TEMPORARY WORKS PACKAGE
- THIS DRAWING IS DIAGRAMMATIC ONLY; EXACT ARRANGEMENTS TO BE DETERMINED ON SITE; ALL LEVELS SHOWN ARE INDICATIVE ONLY

MAX. WIDTH OF EACH UNDERPIN SECTION TO BE 1m

COWPE LOWE ENGINEERING LTD.
REGISTERED IN ENGLAND & WALES No. 09716582



52863			JACK STRAWS CASTLE, NORTH END WAY NW3 7ES						 <div>Cowpe Lowe Engineering 01488 657 793 / 07847 224 552 info@cowpelowe.co.uk www.cowpelowe.co.uk</div>	CONSTRUCTION SEQUENCE: JACK STRAWS CASTLE: SHEET 3					PARTY WALL AWARD	
REV	DATE	DESCRIPTION	REV	DATE	DESCRIPTION	REV	DATE	DESCRIPTION		DRAWN	CHECKED	DATE	PAPER SIZE	SCALE	TW / 07	-
-	25.07.23	Issued for Temporary Works Package								KT	KAR	25.07.2023	A3	1 : 50		



Cowpe Lowe Engineering
01488 657 793 / 07847 224 552
info@cowpelowe.co.uk
www.cowpelowe.co.uk