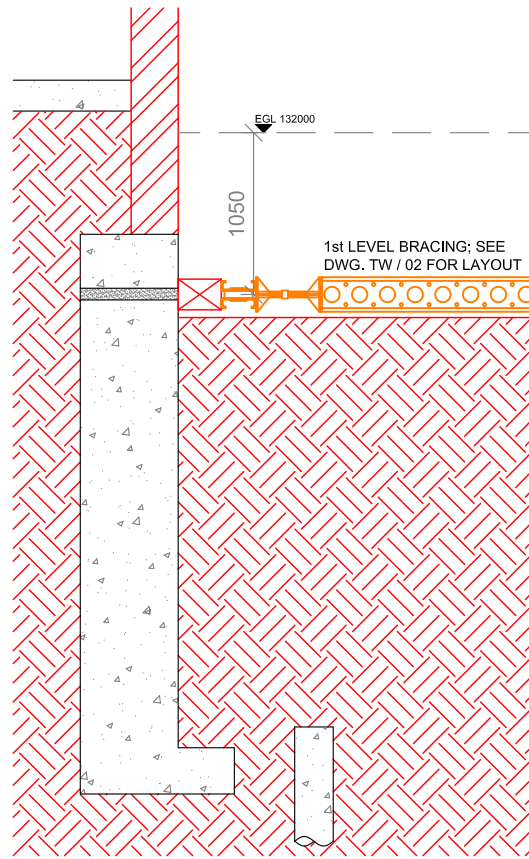
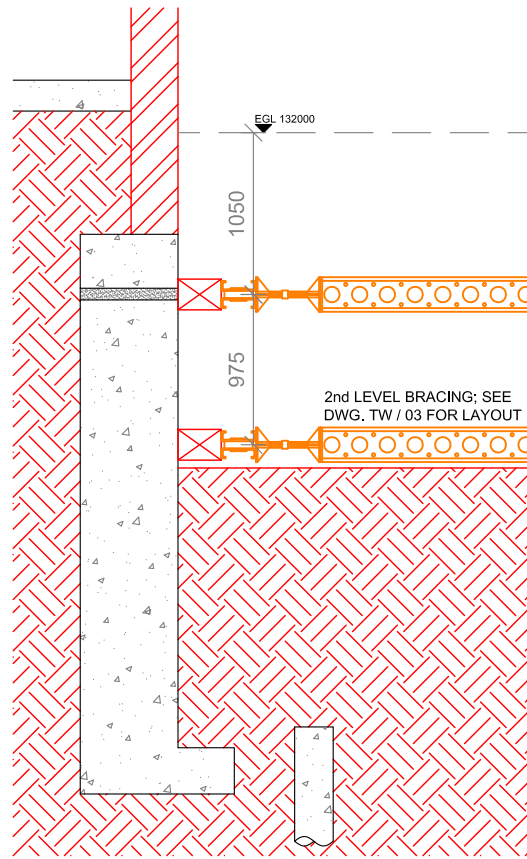


SECTION SHOWN HERE IS THE LEFT SIDE OF SECTION 1 - 1 ON HORWITZ ASSOC. DWG. F - 03 - C1



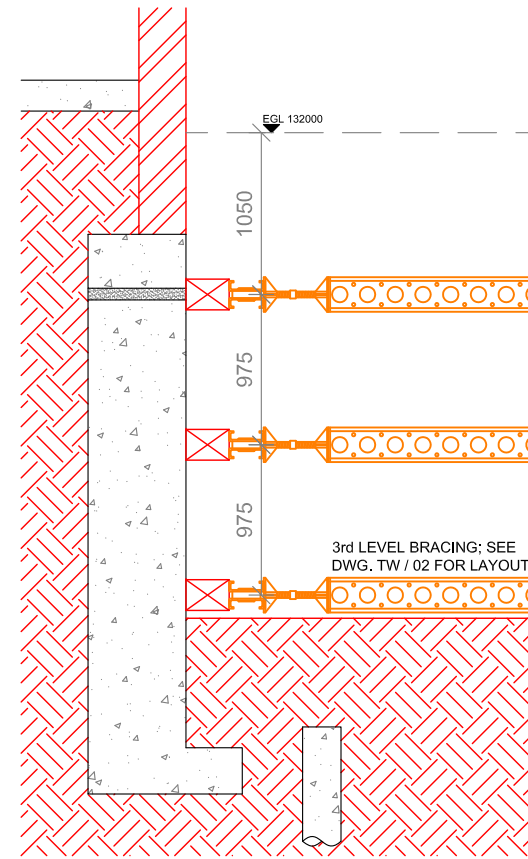
STAGE 8

1st LEVEL BRACING; SEE DWG. TW / 02 FOR LAYOUT



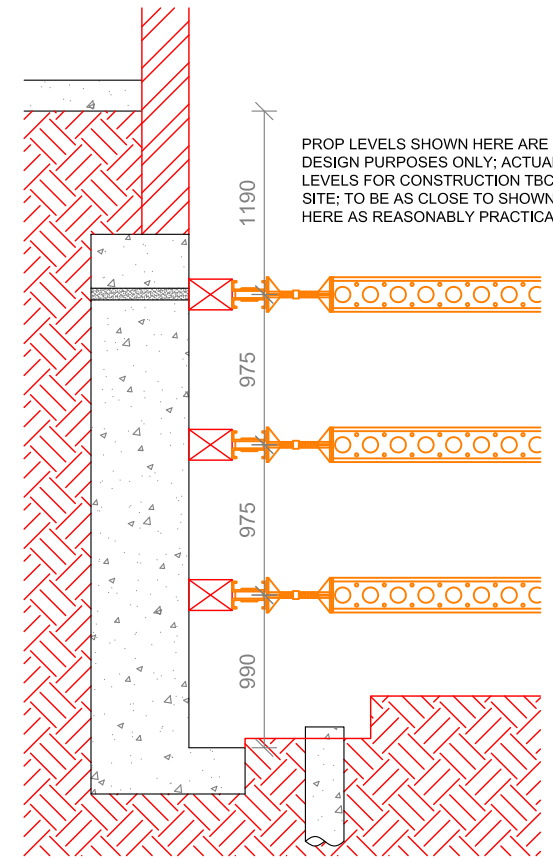
STAGE 9

2nd LEVEL BRACING; SEE DWG. TW / 03 FOR LAYOUT



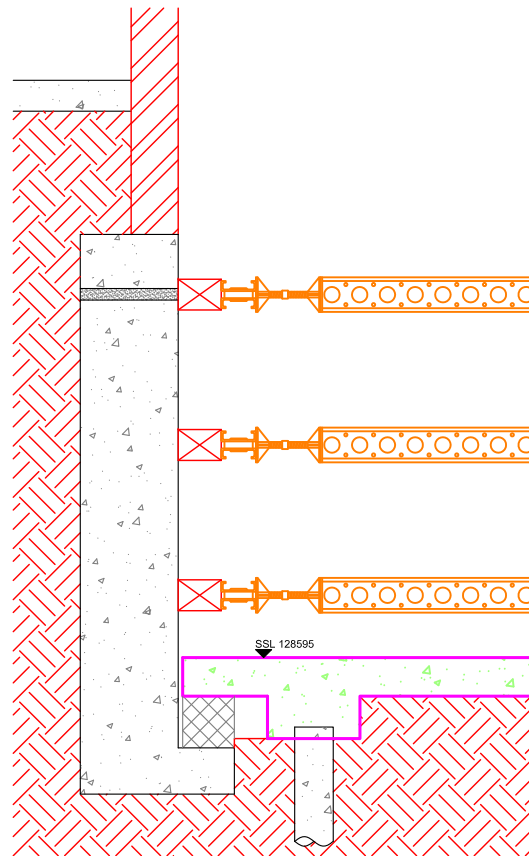
STAGE 10

3rd LEVEL BRACING; SEE DWG. TW / 02 FOR LAYOUT

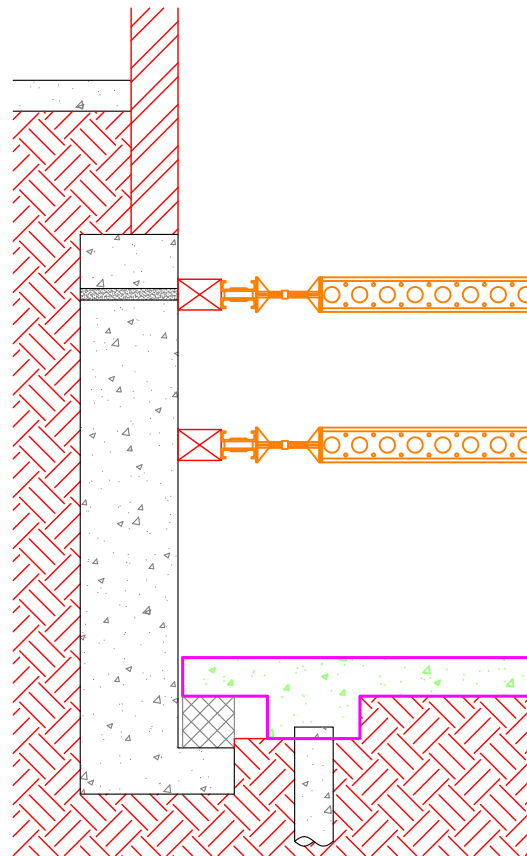


STAGE 11

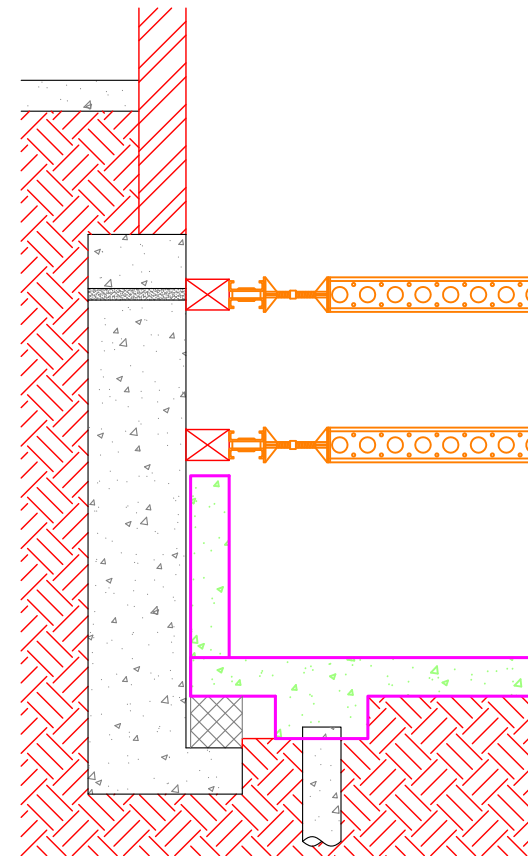
PROP LEVELS SHOWN HERE ARE FOR DESIGN PURPOSES ONLY; ACTUAL LEVELS FOR CONSTRUCTION TBC ON SITE; TO BE AS CLOSE TO SHOWN HERE AS REASONABLY PRACTICABLE



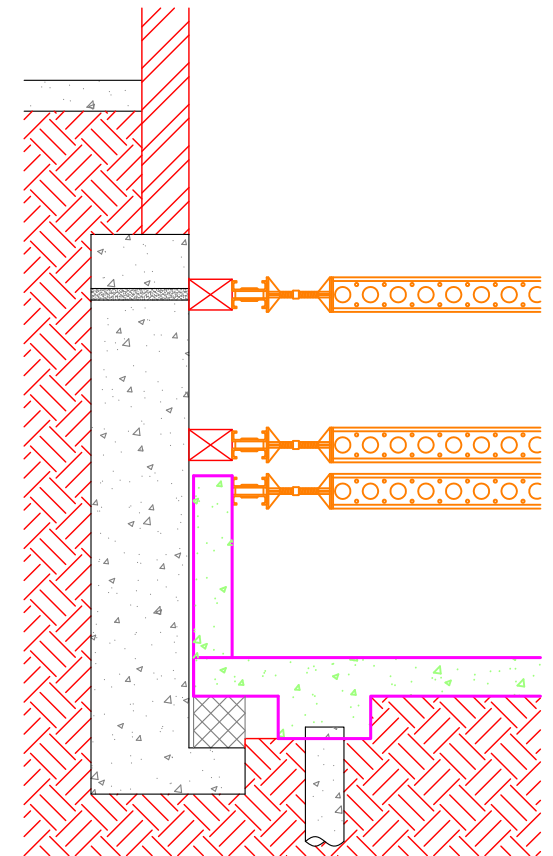
STAGE 12



STAGE 13



STAGE 14



STAGE 15

LEVEL '2A'  
LEVEL '2B'

- NOTES:
- THIS DRAWING IS TO BE READ IN CONJUNCTION WITH THE TEMPORARY WORKS PACKAGE
  - THIS DRAWING SHOWS THE INDICATIVE CONSTRUCTION SEQUENCE ONLY & DOES NOT SHOW CONSTRUCTION DETAILS
  - FOR CONSTRUCTION DETAILS REFER TO THE PERMANENT WORKS STRUCTURAL DRAWINGS & THE TEMPORARY WORKS PACKAGE
  - THIS DRAWING IS DIAGRAMMATIC ONLY; EXACT ARRANGEMENTS TO BE DETERMINED ON SITE; ALL LEVELS SHOWN ARE INDICATIVE ONLY

MAX. WIDTH OF EACH UNDERPIN SECTION TO BE 1m

COWPE LOWE ENGINEERING LTD.  
REGISTERED IN ENGLAND & WALES No. 09716582

SCALE



<b>52863</b>		
REV	DATE	DESCRIPTION
-	25.07.23	Issued for Temporary Works Package

<b>JACK STRAWS CASTLE, NORTH END WAY NW3 7ES</b>					
REV	DATE	DESCRIPTION	REV	DATE	DESCRIPTION

**Cowpe Lowe Engineering**  
01488 657 793 / 07847 224 552  
info@cowpelowe.co.uk  
www.cowpelowe.co.uk

<b>CONSTRUCTION SEQUENCE: JACK STRAWS CASTLE: SHEET 2</b>				
DRAWN	CHECKED	DATE	PAPER SIZE	SCALE
KT	KAR	25.07.2023	A3	1 : 50

<b>PARTY WALL AWARD</b>	
<b>TW / 06</b>	-