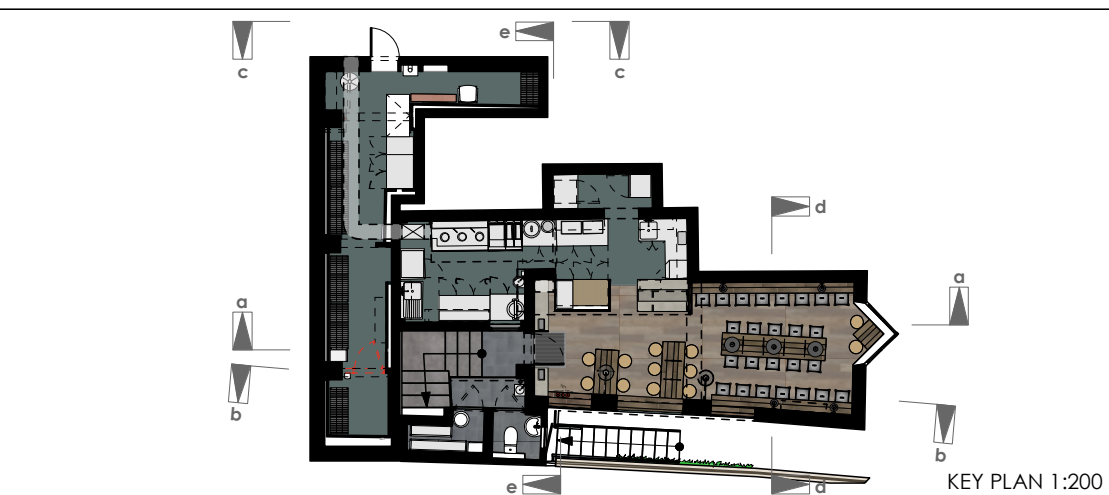
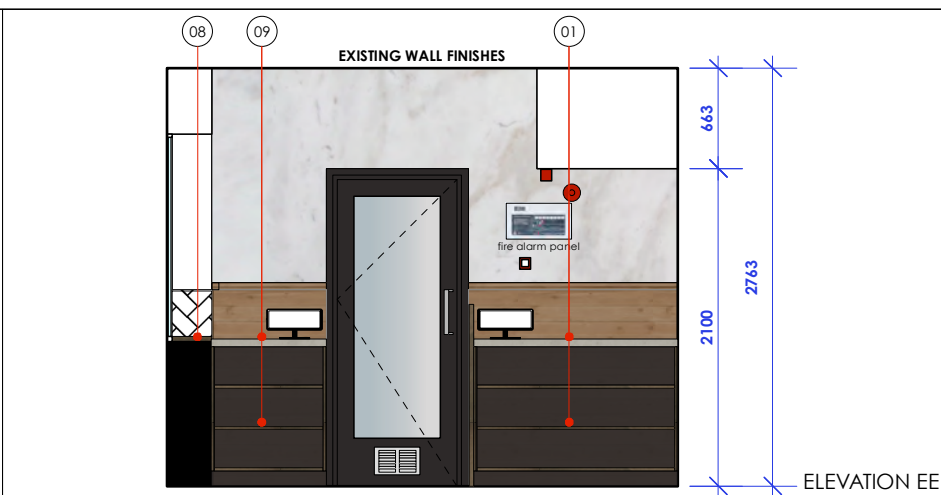
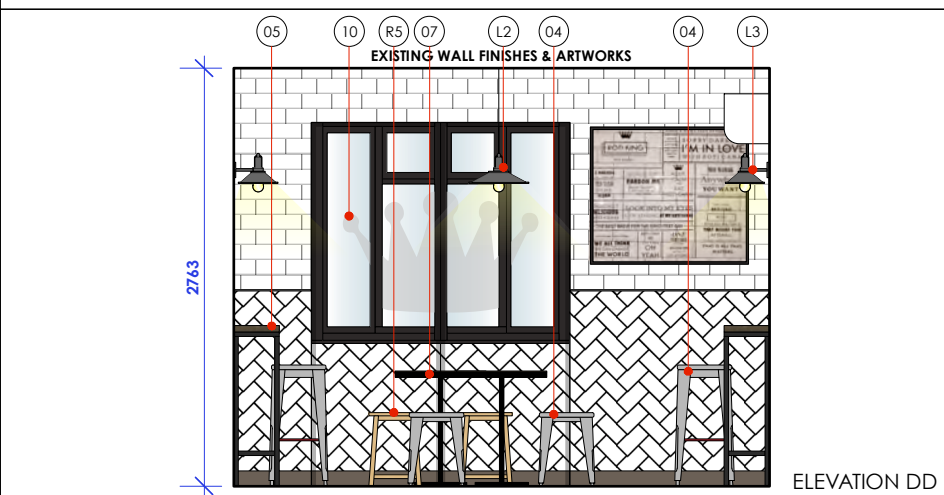
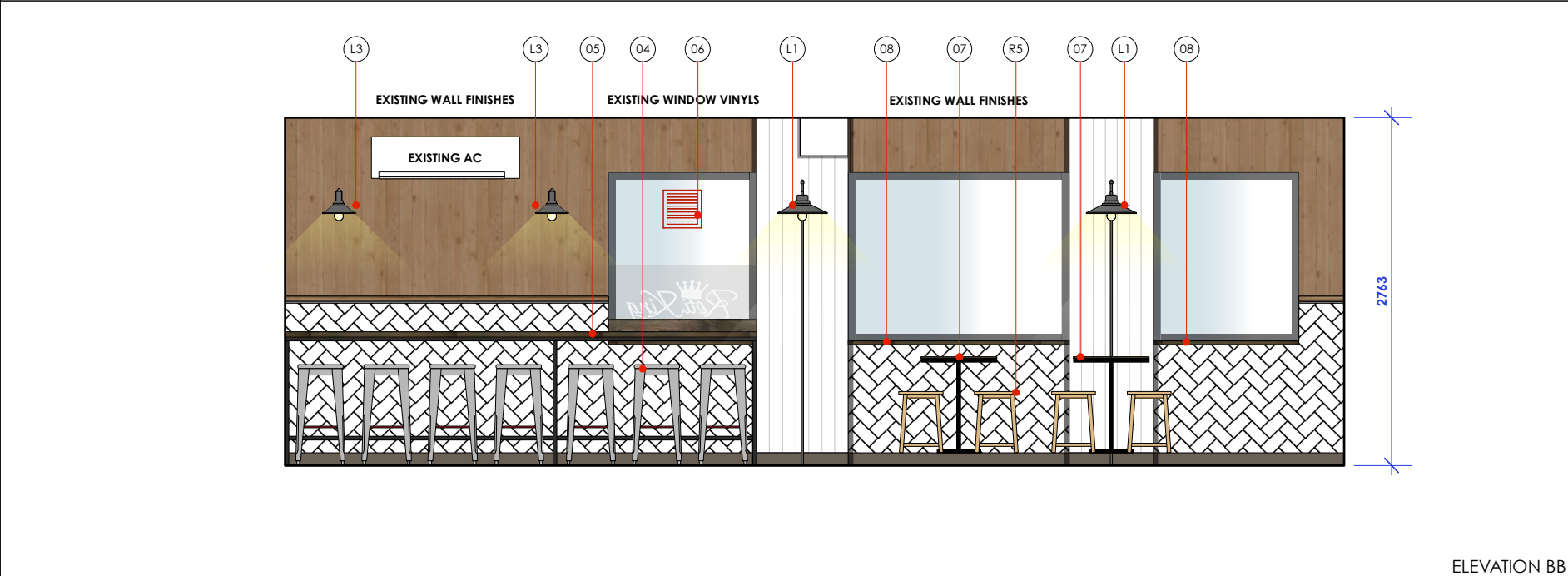



REFURBISHMENT NOTES:		06	NEW WINDOW vent to be removed from window, with new window fitted to replace existing pane.
01	NEW DELIVERY SHELVES & SCREEN 03no. shelves 1354w (to fit) 375d with himacs top plus 01no. new delivery screen & sockets.	07	NEW DINING TABLES - 750h 1no. 2750w 600d 10 seater 1no. 1200w 600d 4 seater 1no. 1500w 600d 6 seater 38 thick bandsawn timber tops & black metal pedestal bases / mild steel base frame to communal table by borne.
02	MODIFIED ROTI PREP STATION. 01no. existing fridge on plinth 1370w 700d 965h with existing granite counter top & white chopping board insert behind (dims tbc on site) with 50w new enclosing wall with blackened steel edge framed windows to 3 faces (frameless to front vertical corners) up to existing bulkhead 2110h. external faces clad in reclaimed timber & corrugated steel.		NEW WINDOW CILLS 3no. timber window cill tops replaced with new to match new benches sizes tbc on site to fit.
03	NEW PASS / PREP & DRINKS COUNTER 01no. 1350w 850d concrete hi-macs counter top with 900w 50d 970h drinks prep side = double drinks fridge under with sliding doors, corner cutlery shelves under, central = 3no. 1300w 300d shelves on frame over double sided for glasses packing & labels, delivery prep side = slim jim bin under & shelves under.	08	NEW TILL SHELVES 03no. shelves 760w (to fit) 375d with reclaimed timber finish & 01no. existing till screen & sockets.
		09	NEW CROWN WINDOW VINYL - 1no. large frosted effect vinyl crown applied across 4 corner windows.
04	NEW STOOLS 15no. new high stools 435w 435d 775h 10no. new low stools 380w 380d 460h all balero bistro low stool in gunmetal finish from borne interiors.	10	REAR BACKYARD WALL GRILLE new hvac grill 400w 600h formed in rear wall, refer to 02.1 external elevations drawing for position.
		11	NEW EXTERNAL GRAFFITI WALL existing side wall to back left side of entrance stair to have graffiti artworks applied.
05	NEW HIGH WALL & WINDOW BENCHES 300d 1060h around the walls where shown with bandsawn timber tops 38 thick & mild steel frames by borne.	12	NEW ENTRANCE DOOR 01no. 785w main entrance door painted timber framed glazed door size & type to match existing style.



EXISTING ITEMS TO BE RETAINED		LIGHTING existing lighting to be retained with the following extra feature lights:		MODIFY EXISTING WALL LIGHTS - 2no. 1no. to be retained & 1no. to be relocated to new position as shown, allow to adjust & modify black conduits to suit new raised height & fit new industville.co.uk brooklyn step pendant 16" pewter with brass pendant holder, black flex with ultra warm sunset ST64 bulb E27 380LM 5W 1800K amber integral ceiling hung with u/s 2000h tbc on site.		CLIENT  PROJECT Roti King Euston 40 Doric Way, London NW1 1LH		TITLE proposed internal & external elevations DRAWING No. TD23/RK03/03.1 REVISION DATE 23.02.24 SCALE@A3 1:50		SCALE BAR 0 1M 2M REVISIONS Copyright Tanner Design Limited, Marcar House 13 Parkshot Richmond Surrey TW9 2RG tel. 07974 324216 email, studio@tannerdesign.co.uk www.tannerdesign.co.uk TANNER	
R5	EXISTING STOOLS - 13no. keep 12no. existing low stools & 1no. high stool.	L2	NEW PENDANT LIGHTS PEWTER - 03no. industville.co.uk brooklyn step pendant 16" pewter with brass pendant holder, black flex with ultra warm sunset ST64 bulb E27 380LM 5W 1800K amber integral ceiling hung with u/s 2000h tbc on site.	L3	NEW WALL LIGHTS PEWTER - 04no. industville.co.uk brooklyn dome 8" pewter with brass wall holder, black flex with ultra warm sunset ST64 bulb E27 380LM 4W 1800K amber integral wall mounted heights tbc on site.	L1	MODIFY EXISTING WALL LIGHTS - 2no. 1no. to be retained & 1no. to be relocated to new position as shown, allow to adjust & modify black conduits to suit new raised height & fit new industville.co.uk brooklyn step pendant 16" pewter with brass pendant holder, black flex with ultra warm sunset ST64 bulb E27 380LM 5W 1800K amber ceiling hung with u/s 2000h tbc on site.				