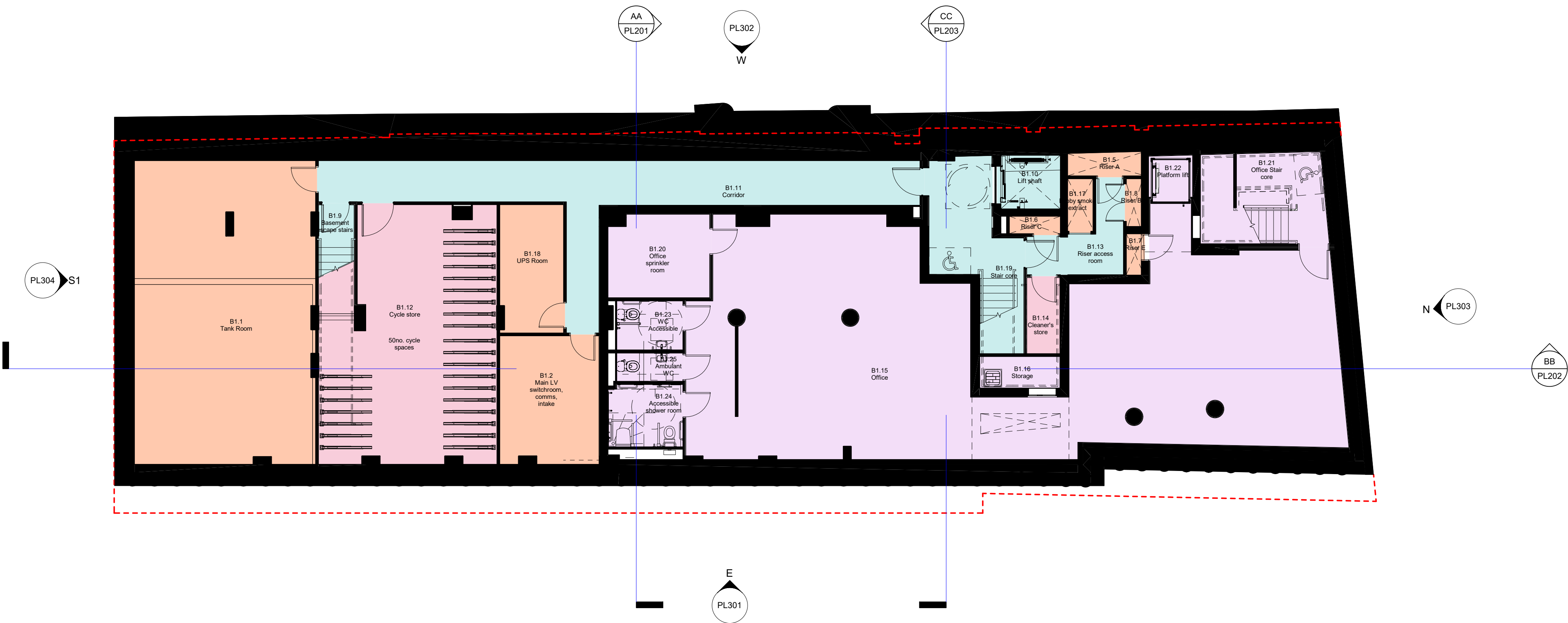


Department Legend

- Circulation
- Communal
- Office
- Plant



**General Notes:**  
A FULL Planning application, reference: 2020/5633/P, was consented on 12 April 2022 for the following works:  
*Erection of a six storey building (and basement) to provide office (use Class E) at part ground and basement levels and self-contained flats (use class C3) at ground and floors one to five, with associated landscaping, cycling parking and enabling works.*

Original Architect - Piercy&Company

Non-Material Amendment application made by Cottrell&Vermeulen Architecture Ltd on behalf of Glenman Corporation Limited for Origin Housing Association.

Revisions		
Rev. no.	Date	Description
P01.1	24/05/2023	For information
P01.2	18/08/2023	NMA Application
P01.3	18/08/2023	NMA Application (annotated)
P01.4	02/04/2024	NMA Application

1:100 0m 1m 2m 3m

WIP		
<div><div><div></div><div>COTTRELL &amp; VERMEULEN ARCHITECTURE</div></div><div>18 Little Street London SE17 3LJ 0207 708 2567 Do not scale from this drawing Confirm all dimensions on site</div></div>		
Drawing Number	Rev.	Status
2960-CVA-TM-B1-DR-A-PL101	P01.4	
14-19 Tottenham Mews		
Proposed Basement Floor Plan		
Drawn by:	MS	Checked by: RC Date:
Scale:	1 : 100	Size: A1 02/04/2024

B1 Proposed Basement Floor  
1 : 100