



Material Key

- 1 Red clay faced brickwork
- 2 Red-toned composite windows frames and handrail metalwork
- 3 Reconstituted cast-stone detailing
- 4 Metal cladding - colour to match window/door frame
- 5 Warm-toned metal cladding
- 6 Red-toned handrail metalwork
- 7 Red-toned glazed doorsets
- 8 Red-toned louvred doorsets
- 9 Metal louvred panel - colour to match L05 cladding material
- 10 Red-toned glazed doorsets
- 11 Building signage
- 12 Warm-toned metal MVHR grille

General Notes:
 A FULL Planning application, reference: 2020/5633/P, was consented on 12 April 2022 for the following works:
 Erection of a six storey building (and basement) to provide office (use Class E) at part ground and basement levels and self-contained flats (use class C3) at ground and floors one to five, with associated landscaping, cycling parking and enabling works.
 Original Architect - Piercy&Company
 Non-Material Amendment application made by Cottrell&Vermeulen Architecture Ltd on behalf of Glenman Corporation Limited for Origin Housing Association.

Revisions

Rev. no.	Date	Description
P01.1	24/05/2023	For information
P01.2	18/08/2023	NMA Application
P01.3	18/08/2023	NMA Application (annotated)
P01.4	02/04/2024	NMA Application
P01.5	02/04/2024	NMA Application (annotated)

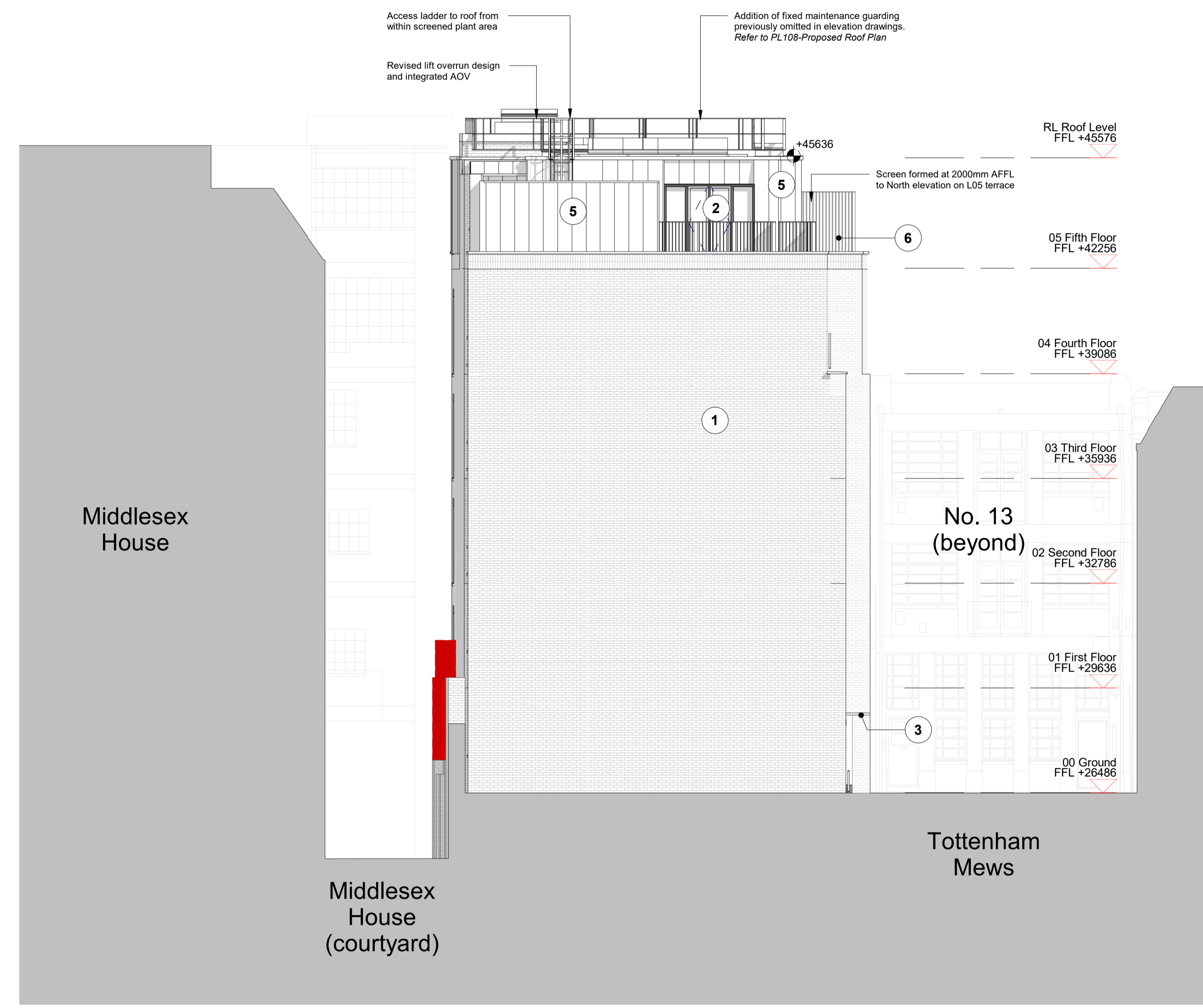


WIP
 COTTRELL & VERMEULEN ARCHITECTURE
 18 Little Street, London SE17 3LJ, 0207 708 2567
 Do not scale from this drawing. Confirm all dimensions on site.

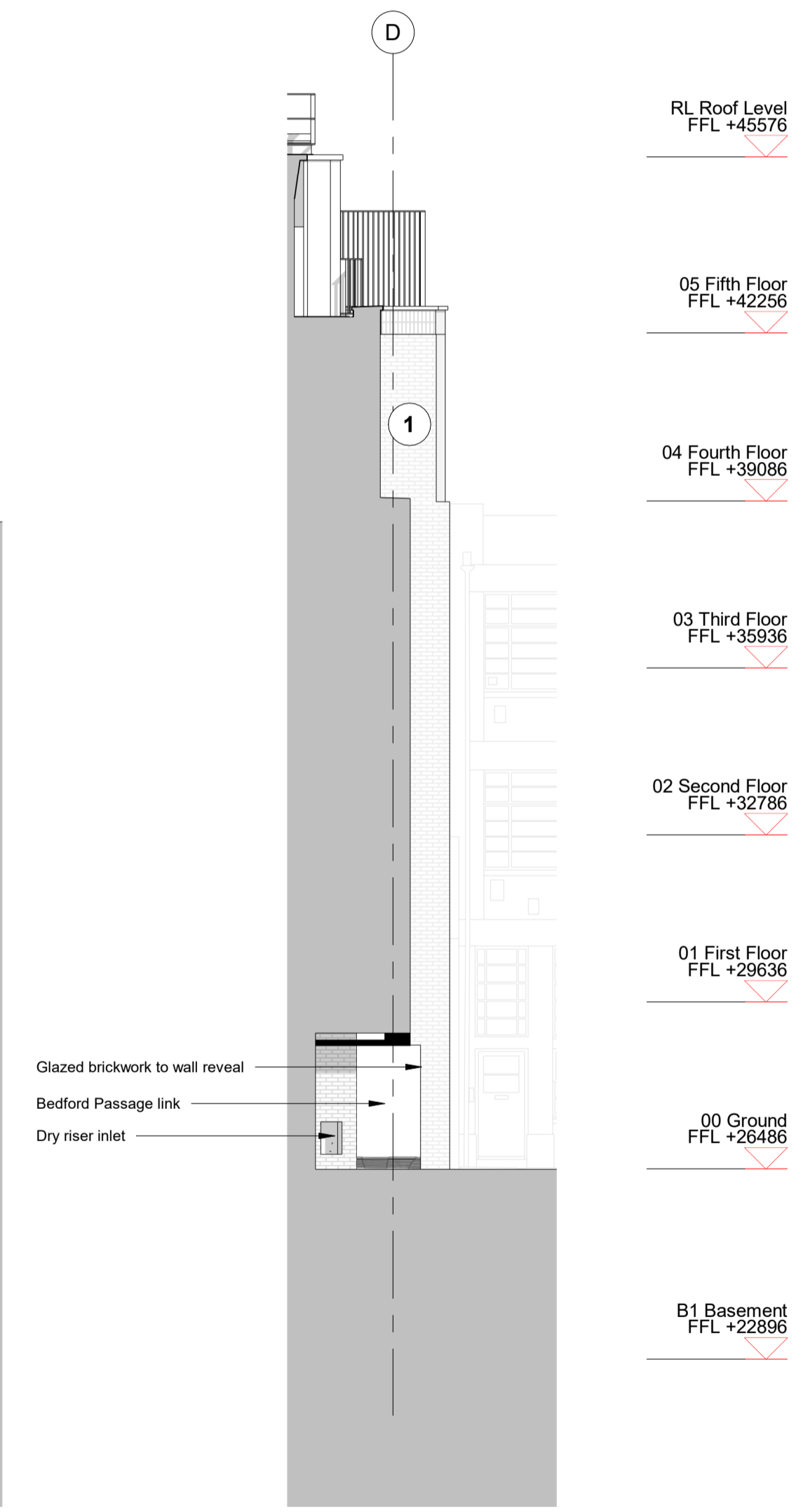
Drawing Number	Rev.	Status
2960-CVA-TM-ZZ-DR-A-PL304	P01.5	

14-19 Tottenham Mews
 Proposed South Elevation

Drawn by:	MS	Checked by:	RC	Date:	
Scale:	As indicated	Size:	A1	Date:	02/04/2024



S1 Proposed South Elevation
 1 : 100



S2 Proposed South Elevation - Passage Link
 1 : 100