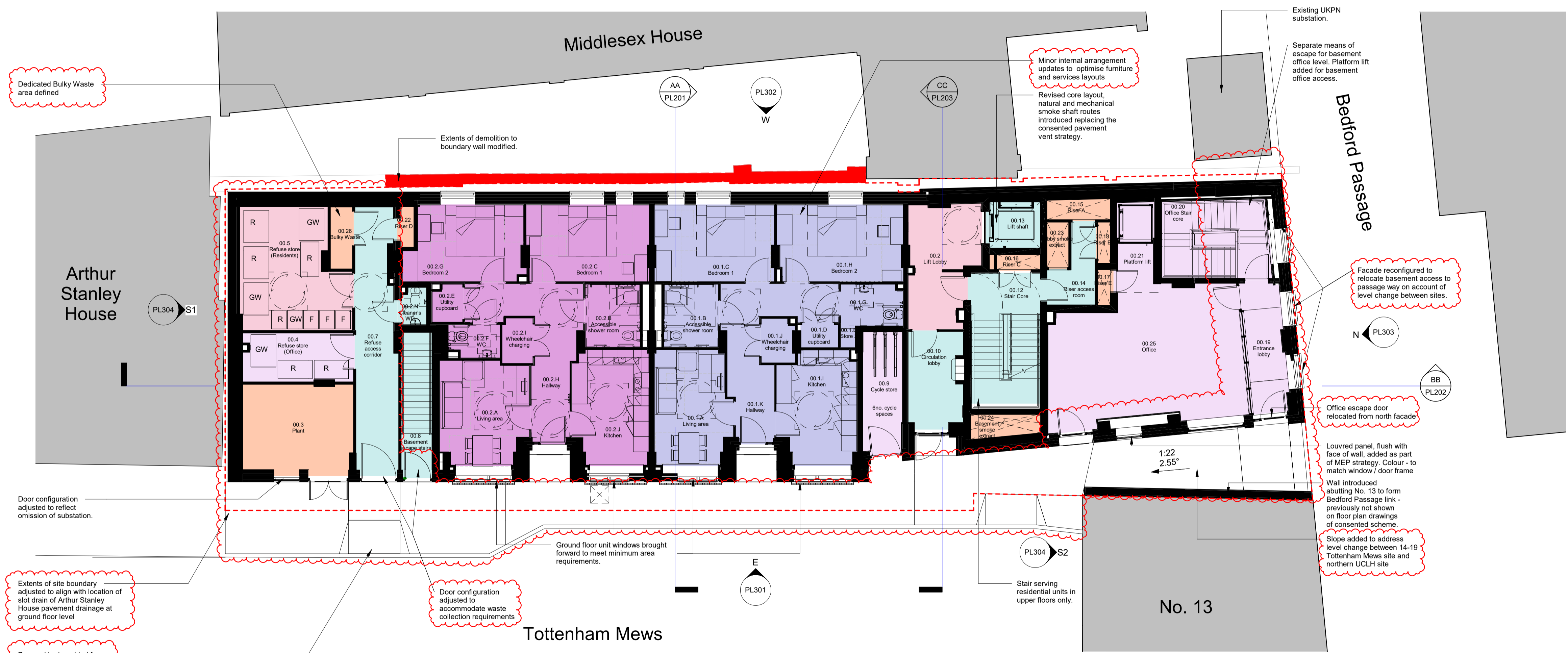


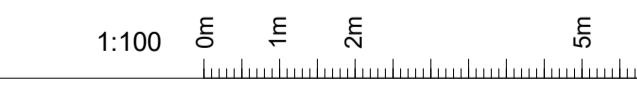
Department Legend	
<span style="color: cyan;">■</span>	Circulation
<span style="color: pink;">■</span>	Communal
<span style="color: blue;">■</span>	Flat 00.1 (2b4p)
<span style="color: purple;">■</span>	Flat 00.2 (2b4p)
<span style="color: lightpurple;">■</span>	Office
<span style="color: orange;">■</span>	Plant



**General Notes:**  
 A FULL Planning application, reference: 2020/5633/P, was consented on 12 April 2022 for the following works:  
 Erection of a six storey building (and basement) to provide office (use Class E) at part ground and basement levels and self-contained flats (use class C3) at ground and floors one to five, with associated landscaping, cycling parking and enabling works.  
 Original Architect - Piercy&Company  
 Non-Material Amendment application made by Cottrell&Vermeulen Architecture Ltd on behalf of Glenman Corporation Limited for Origin Housing Association.

Revisions		
Rev. no.	Date	Description
P01.1	24/05/2023	For information
P01.2	18/08/2023	NMA Application
P01.3	18/08/2023	NMA Application (annotated)
P01.4	02/04/2024	NMA Application
P01.5	02/04/2024	NMA Application (annotated)

00 Proposed Ground Floor  
 1 : 100



WIP

**COTTRELL & VERMEULEN ARCHITECTURE**  
 18 Little Street  
 London SE17 3LJ  
 0207 708 2567  
 Do not scale from this drawing  
 Confirm all dimensions on site

Drawing Number 2960-CVA-TM-00-DR-A-PL102	Rev. P01.5	Status
---	---------------	--------

14-19 Tottenham Mews  
 Proposed Ground Floor Plan

Drawn by: MS	Checked by: RC	Date:
Scale: 1 : 100	Size: A1	02/04/2024