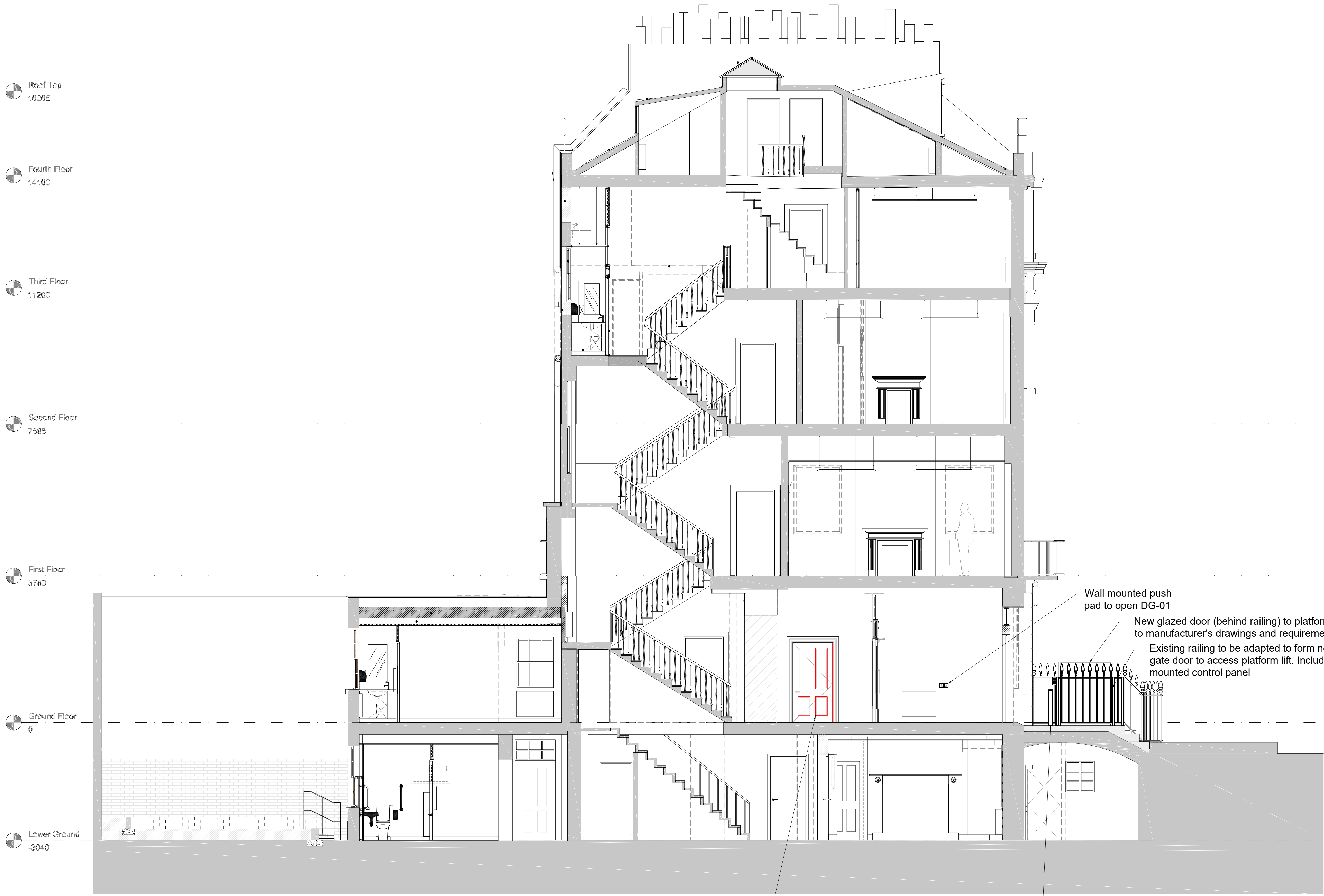


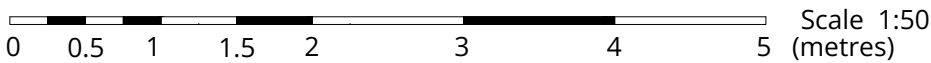
© THIS DRAWING IS A COPYRIGHT OF BARKER ASSOCIATES.

NOTES:
ALL LEVELS, ANGLES AND DIMENSIONS TO BE CHECKED
ON SITE PRIOR TO COMMENCEMENT OF WORKS.

THIS DRAWING IS TO BE READ IN CONJUNCTION WITH
ALL RELEVANT STRUCTURAL ENGINEERS AND
MECHANICAL AND ELECTRICAL ENGINEERS DRAWINGS,
DETAILS AND SPECIFICATIONS.



PROPOSED Section
Scale 1:50



Drawing Status:

PLANNING and LBC

Rev	Description	Date	By
P01	Issued for comments	27/03/24	JM

Barker MAJESTY HOUSE, AVENUE WEST
SKYLINE 120, BRAINTREE
ESSEX, CM77 7AA
T: 01279 647111
W: www.barker-associates.co.uk
E: mail@barker-associates.co.uk

Client: UNIVERSITY COLLEGE LONDON

Project Title: Accessibility Works at
Political Sciences School, 36-38 Gordon Square,
London, WC1H 0PD

Drawing Title: Proposed Section

Drawn	Checked	Scale	Date
JM		1/50 @ A1	21/02/2024

ARCHITECTURAL

Drawing Number	Status	Revision
P24-0166-BA-A1-XX-DR-A-4104	S0	P01