



Legend

- Site Boundary Approximate
- Habitable Rooms
- Planting / Vegetation
- Storage

Perimeter Planting - ZONE 3

Set flush with paving in front of bay window, mixed planting with lavender & mixed ornamental grasses including: Carex Morrowii (Ice Dance), Pennisetum Alopecuroides (Little Bunny) & Stipa Tenuissima (Pony Tails).

Refuse & Recycling Store

6 No. 240 Litre Bins Total within vertical larch clad bespoke enclosure with opening doors & green roof

Boundary Fence Planting - ZONE 4

Set flush with paving, mixed planting adjacent to boundary fence, with existing planting to be retained. Species include; Prunus Laurocerasus (Cherry Laurel) & Euonymus Japonicus (Evergreen Spindle)

Central Planting - ZONE 2

Set flush with paving, to include mixed planting with miniature Hazel Tree as focal point, regularly trimmed to ensure size is maintained, with mixed ornamental grasses planted below including; Pennisetum Alopecuroides (Hamelin - Fountain Grass), Stipa Gigantea (Golden Oats Grass), Helictotrichon Sempervirens Sapphire (Blue Oat Grass) & Stipa Tenuissima (Pony Tails)

Boundary Fence

Low level timber trellis fence to be replaced with new matching timber trellis fencing & timber posts

Paving

Existing York stone effect concrete paving slabs to be retained with positions adjusted to provide stable level base to new refuse & recycling store & facilitate planting zones as illustrated

Boundary Column

Primary column to define property boundaries.

Boundary Wall

Part height wall in buff / yellow stock brick

Boundary Wall Planting - ZONE 1

Set flush with paving with mixed planting to include; Stipa Gigantea (Golden Oats Grass), Selinum Wallichianum (Wallich Milk Parsley), Anthriscus Sylvestris (Cow Parsley), & Verbena Rigida (Slender Vervain).

Entrance Column/s

Secondary column defining pedestrian entrance. Reduced height compared with primary boundary columns. Built in matching buff / yellow brick with concrete coping slab. Columns visibly leaning & in poor state of repair

New Slatted Timber Screen & Pass Door

Larch clad screen & access door to replace existing painted timber fence. Timber cladding to match refuse & recycling store

Food Caddy Bin

3 No. 23 Litre food / composting bin

Pedestrian Access Gate

Single hinged access gate in black painted metal

Boundary Column

Primary column defining property boundaries. Existing column & capping detail to be retained.

△ Kerb / Edge of Pavement

0 1m 2m
1:50

UPPER PARK ROAD

Drawings based on received survey information, Lawson Surveying, received September 2023.

Revisions

R	Date	Description
00	17.11.23	Planning Issue
01	05.03.24	Planning Issue Update
02	20.03.24	Planning Issue Update

Project

Upper Park Road
34 Upper Park Road, Belsize Park, London, NW3 2UT

Drawing

Front Garden Plan
Proposed

Status

Planning

Scale

1:50

Format

A3

Drawing Reference

0793-03-1275

Revision

02

2023/5105/P - Front Garden Site Photos

34 Upper Park Road, London, NW3 2UT

Mature Shrub (Viburnum)
Recently removed as part of on-going renovation works.



External Property View - Historic Site Photo

Assorted shrubs & vegetation



Front Garden View - Current Condition

2023/5105/P - Planting Schedule, Inspiration

34 Upper Park Road, London, NW3 2UT

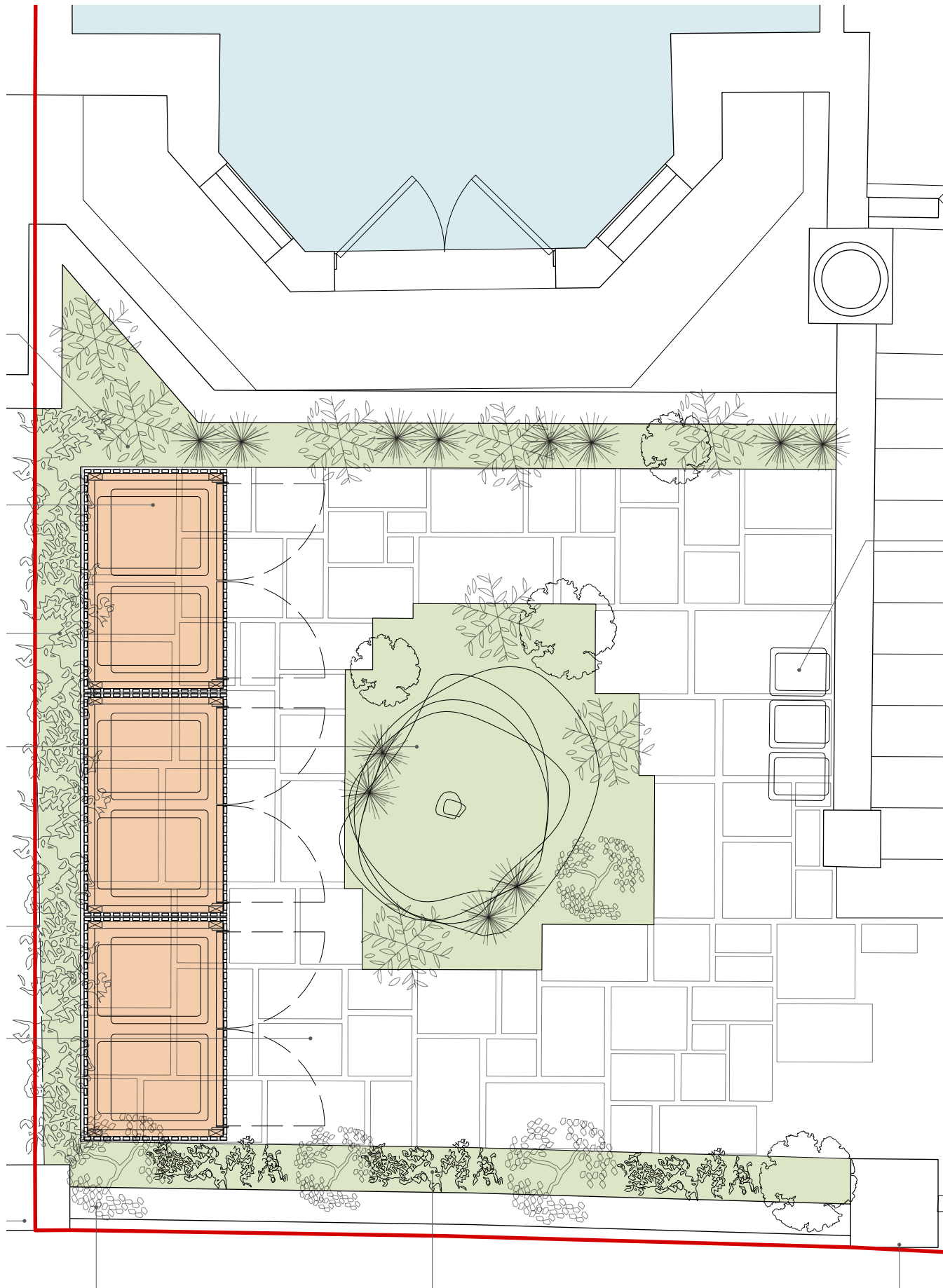
Mixed planting with layered textures, colours, plant shapes & forms to provide a rich variety of flora & fauna throughout the year.



Photo Inspiration 1



Photo Inspiration 2



Front Garden Part Plan - 1:50 Scale @ A3

2023/5105/P - Planting Schedule, ZONE I

34 Upper Park Road, London, NW3 2UT

Mixed planting with grasses & flowers to include;

Stipa Gigantea (Golden Oats Grass), Selinum Wallichianum (Wallich Milk Parsley), Anthriscus Sylvestris (Cow Parsley), & Verbena Rigida (Slender Vervain).



Stipa Gigantea - Golden Oats Grass

★★★★★

£7.99

Product ref: 076006

Availability: Out of stock

As the name suggests, Stipa gigantea is among the largest grass species to be found, and as a feather grass, it's one of the most striking ornamental plants to include in a garden. Arching stems of golden-brown, oat-like flowerheads appear above clumps of narrow, grey-green leaves. This majestic semi-evergreen grass is an excellent specimen plant for a sunny, raised or free-draining bed. The leaves are strong and dry, and it displays a wonderful plume of oat-like flowers that emerge early and mature to a golden yellow in autumn, making it the perfect choice for neutral arrangement. It looks stunning when planted with the rich purple Alliums and a host of other plants such as Sedum, Hebe, and Echinacea. It will thrive in fertile well-drained soil in a sunny position.

Supplied in approx. 1 litre containers - large established specimen.

© Add to Wishlist

Notify me when this product is in stock



Verbena rigida

★★★★★ (100)

Verbena rigida is the small and more densely flowery version of verbena which flowers for four or five months at a stretch.

[Read More](#)

75 seeds 05609X

£2.95

In Stock - please allow up to 2 working days for dispatch

[ADD TO BAG](#)

10 seedlings 060217D

£16.95

delivery from mid april

[ADD TO BAG](#)

3 x 9cm pots 060221D

£11.95

[ADD TO BAG](#)



Selinum wallichianum

★★★★★ (50)

With large, creamy white umbels similar to cow parsley, soft, fern-like foliage this is an ideal plant for shady areas. It is very reliable.

[Read More](#)

22 seeds 19001T

£3.95

In Stock - please allow up to 2 working days for dispatch

[ADD TO BAG](#)

3 x 9cm pots 200427-B

£16.50

Out of stock

[NOTIFY ME WHEN AVAILABLE](#)



Anthriscus sylvestris

Cow parsley | Herb, Perennial | Family: Apiaceae

✓ Height: 90cm

☀ Hardy

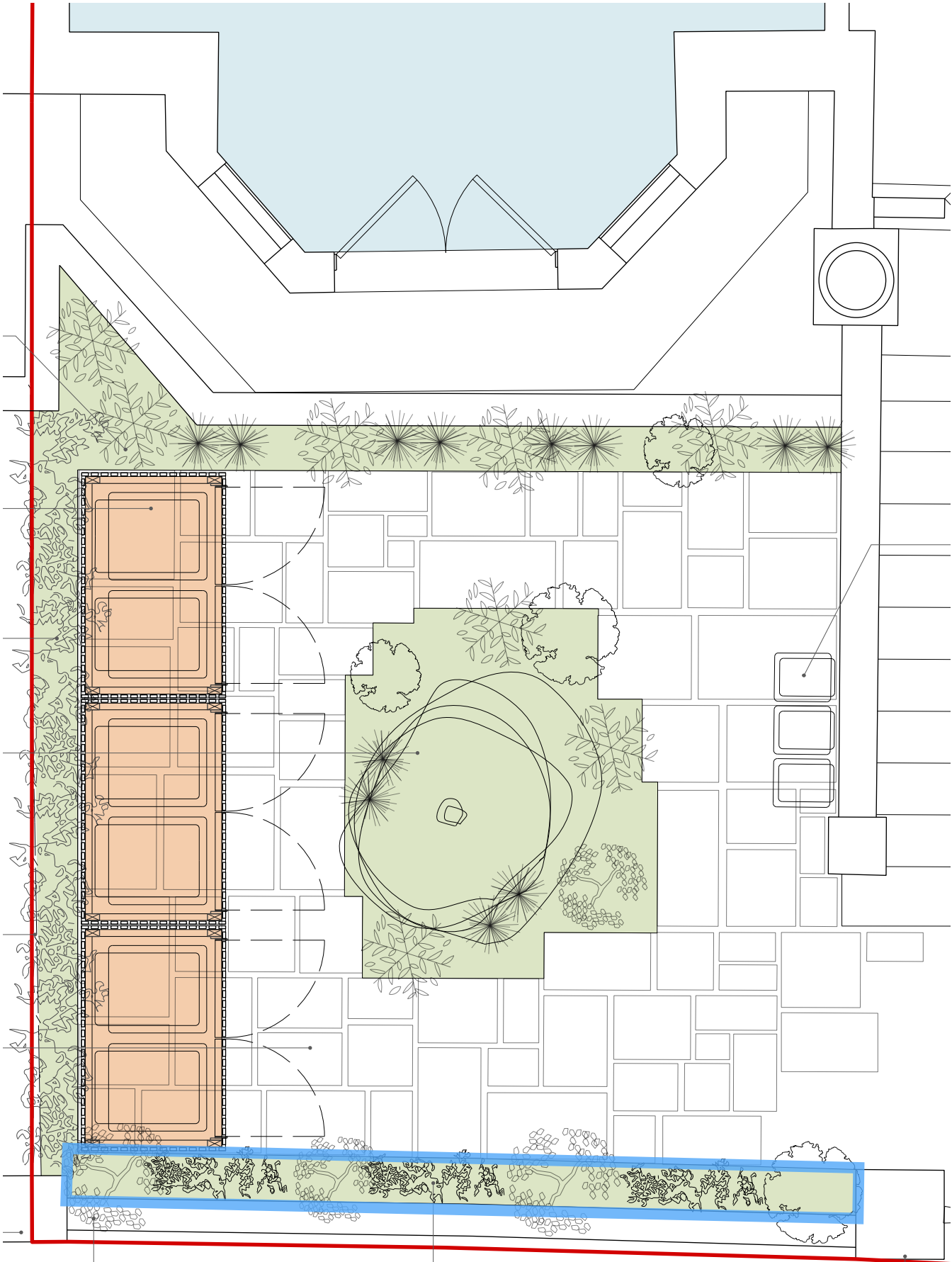
Spread: 60cm

🐝 Attractive to wildlife

Flower colour: ○

Foliage colour: ●

[f](#) [t](#) [p](#) [w](#) [b](#) [m](#)



Front Garden Part Plan - 1:50 Scale @ A3

2023/5105/P - Planting Schedule, ZONE 2

34 Upper Park Road, London, NW3 2UT

Mixed planting with miniature Hazel Tree as focal point, regularly trimmed to ensure size is maintained, with mixed ornamental grasses planted below including;
Pennisetum Alopecuroides (Hameln - Fountain Grass), Stipa Gigantea (Golden Oats Grass), Helictotrichon Sempervirens Sapphire (Blue Oat Grass) & Stipa Tenuissima (Pony Tails)



Pennisetum alopecuroides 'Hameln' - Fountain Grass

★★★★★ 2 reviews

£9.95

Product ref: 035294

Availability: **In stock**

An attractive ornamental grass which makes a compact, densely tufted clump of dark green leaves, that turn yellow in autumn. From mid-summer to autumn, it bears feathery, greenish white flower spikes that mature to grey-brown. This grass looks great for months on end and needs very little attention either, just removal of dead leaves in spring. Supplied in approx 2 litre containers.

Qty

1

+

-

Add to cart

add to Wishlist



Stipa gigantea - Golden Oats Grass

★★★★★

£7.99

Product ref: 070003

Availability: **Out of stock**

As its name suggests, Stipa gigantea is amongst the largest grass types to be found, and as a fountain grass, it is one of the most striking ornamental plants to include in a garden. Arching stems of glitzy, golden, oat-like flowerheads appear above clumps of slender, grey-green leaves. This major autumn flowering grass is an excellent watch and plant for a sunny, mixed or new perennial border. The leaves are strong and flax, and it displays a wonderful plume of oat-like flowers that emerge in July and mature to a golden yellow by autumn, making it a perfect choice for a bushy flower bed, or a sunny garden. Planted with the red purple A. lutea and a host of other plants such as Sedum, Helianthus, Achillea and more. It will thrive in fertile well-drained soil, ideally in a sunny position. Supplied in approx 1 litre containers - large established specimens available.

add to Wishlist

Notify me when this product is in stock



Helictotrichon sempervirens Sapphire - Blue Oat Grass

★★★★★

£11.95

Product ref: 070003

Availability: **Out of stock**

Fantastic, fine blue blades on this very useful, drought-tolerant, evergreen grass. It looks its own as a specimen plant but is especially attractive in mass plantings. Supplied in approx 2 x 1 litre containers.

add to Wishlist

Notify me when this product is in stock

sns@fuctymorday.co.uk

Notify me



Corylus Avellana (Hazel)



Stipa tenuissima 'Pony Tails'

★★★★★ (3)

Soften the edges of your paths or patio with this quick-to-flower perennial grass which will gently self-sow.

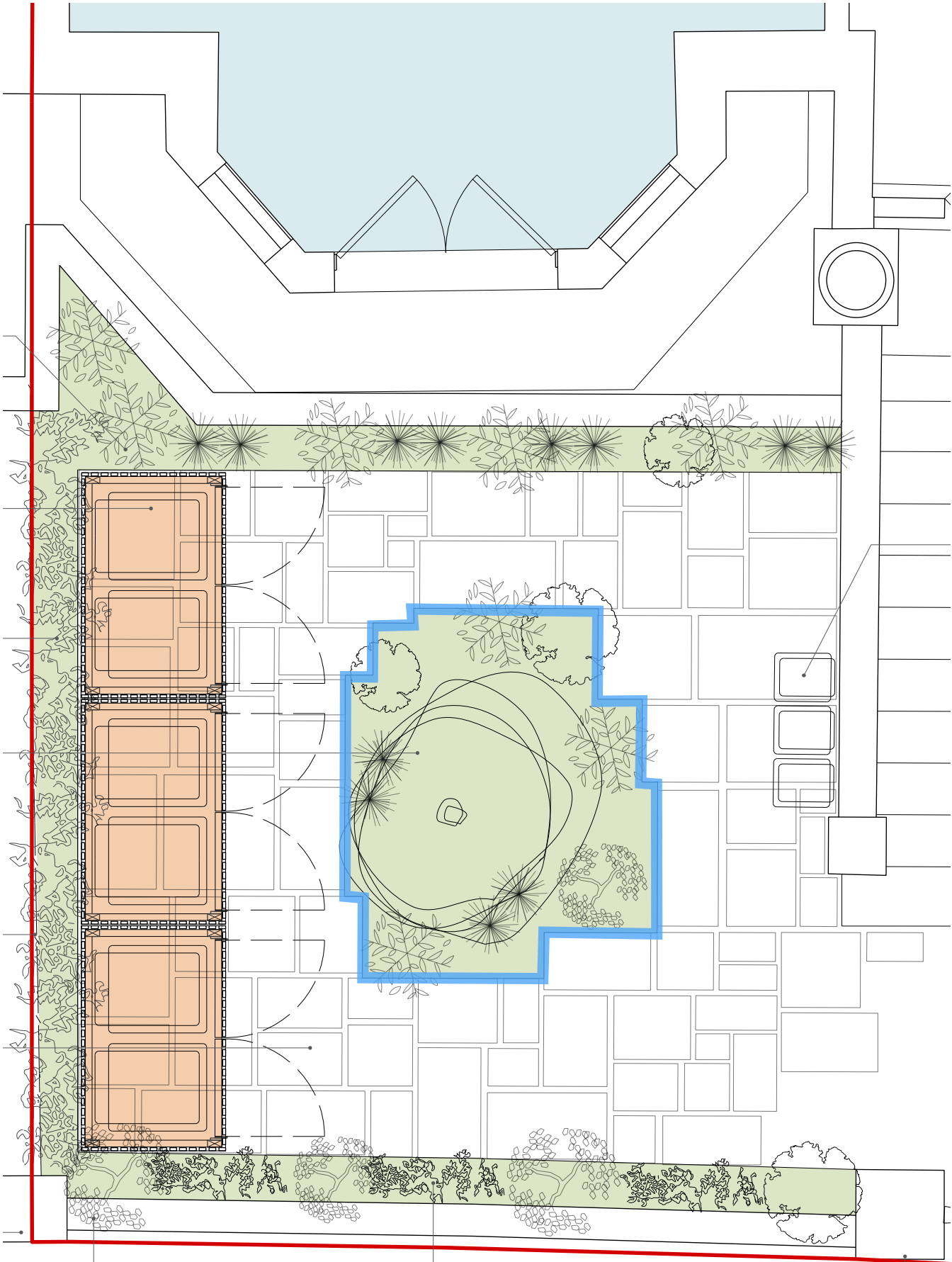
[Read More](#)

3 x 9cm pots 510005-5

£12.95

delivery from mid april

ADD TO BAG



Front Garden Part Plan - 1:50 Scale @ A3

2023/5105/P - Planting Schedule, ZONE 3

34 Upper Park Road, London, NW3 2UT

Mixed planting with lavender & mixed ornamental grasses including:
Carex Morrowii (Ice Dance), Pennisetum Alopecuroides (Little Bunny) & Stipa Tenuissima (Pony Tails).



Carex morrowii 'Ice Dance'

★★★★★

£9.95

Product ref: 079010

Availability: In stock

Carex morrowii 'Ice Dance' is an attractive form of ornamental grass with arching variegated foliage that really catches your attention where ever it is planted, be it in large drifts for ground covers, or its own, or perhaps used with the foliage spilling over the side of a classy looking planter.

Carex morrowii 'Ice Dance' is a garden value loving evergreen, thus providing interest all year round, in late spring, it is decorated with small, white flower spikes.

Very hardy and easy to grow, this perennial grass will produce a dense clump of foliage, well suited to the front of borders or patio containers. Carex morrowii 'Ice Dance' will thrive in any rich, fertile soil and will happily grow in a lightly shaded spot or full sun.

This elegant form of evergreen sedge with white green leaves edged with a crisp, silvery margins will be a lovely addition to your garden, perhaps try it cascading at the edge of a water feature. Strong established plants supplied in approx 2-3 litre containers.



Pennisetum alopecuroides 'Little Bunny' - Fountain Grass Plants

★★★★★ 2 reviews

£12.99

Product ref: DEAL143001

Availability: Out of stock

Little Bunny is the most wonderful and hardy fountain grass available with lovely, fluffy, buff coloured heads in late summer into autumn that move gracefully in the breeze. These will create a fabulous effect in a simple style standing where, subtle pale plants in garden under shade.

Try it mixed with perennial such as Aquilegia, Anemone, Echinacea, Rudbeckia, Sedum and other grass varieties. The leaves turn golden 'rust' in the autumn adding further interest to the plant. Once established Pennisetum 'Little Bunny' is drought tolerant and supplied in approx 2-3 litre containers.

© 2023 2023/01/01

Notify me when this product is in stock



Stipa tenuissima 'Pony Tails'

★★★★★ (3)

Soften the edges of your paths or patio with this quick-to-flower perennial grass which will gently self-sow.

Read More

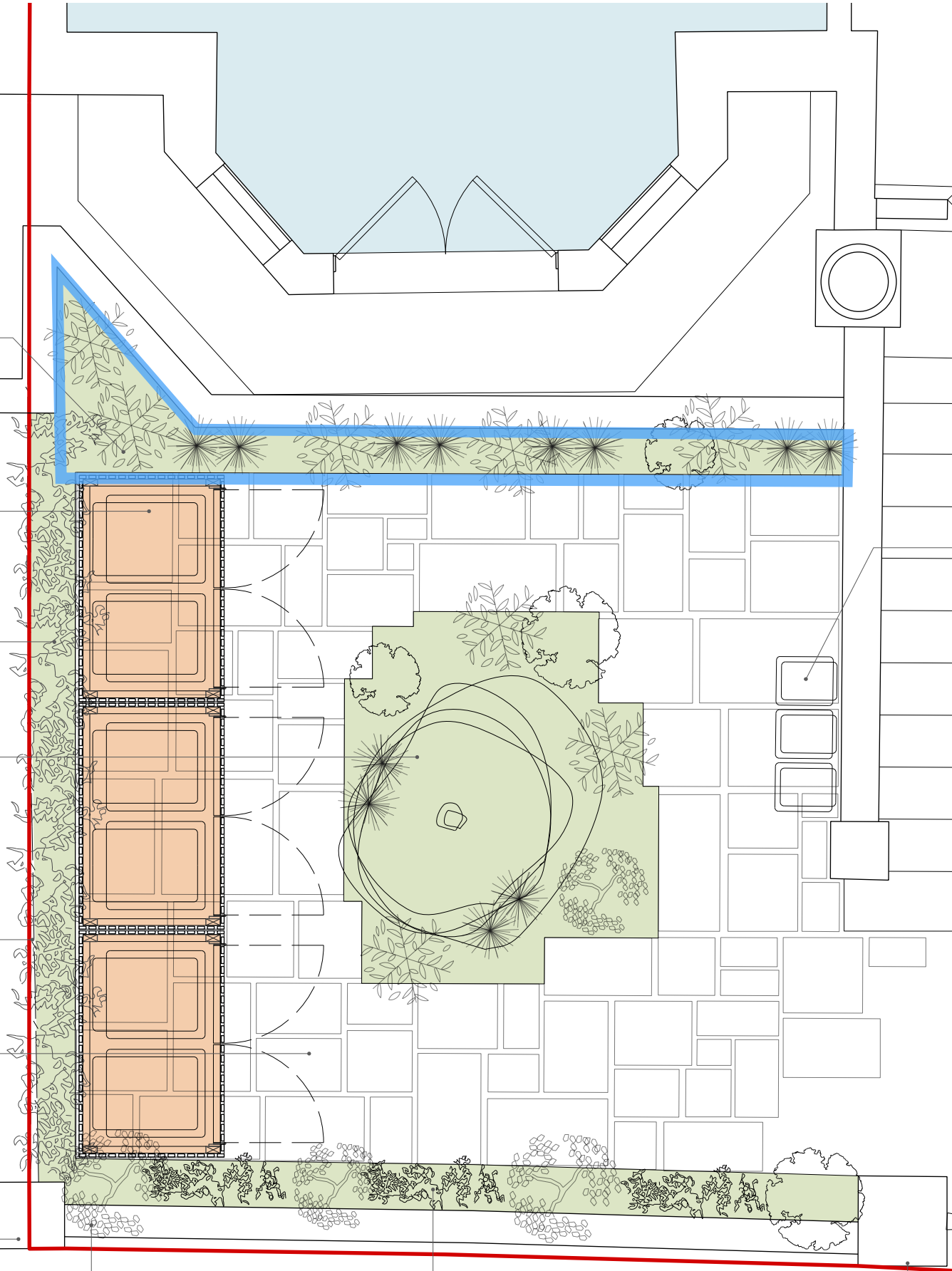
3 x 9cm pots 519026-5

£12.95

delivery from mid april

ADD TO BAG

519026-5



Front Garden Part Plan - 1:50 Scale @ A3

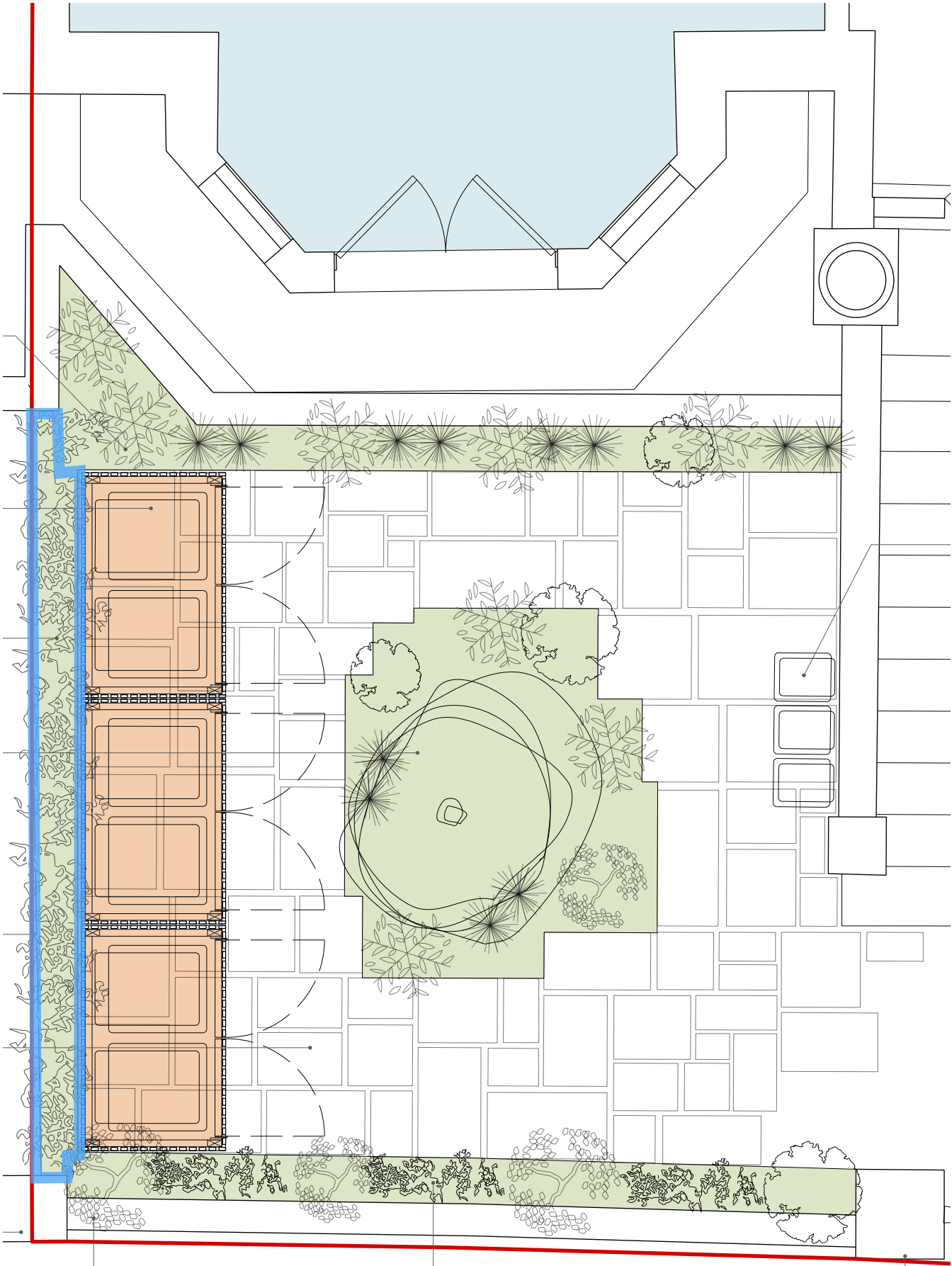
2023/5105/P - Planting Schedule, ZONE 4

34 Upper Park Road, London, NW3 2UT

Existing mixed planting adjacent to boundary fence to be retained. Species include; Prunus Laurocerasus (Cherry Laurel) & Euonymus Japonicus (Evergreen Spindle)



Existing site photo showing boundary planting



Front Garden Part Plan - 1:50 Scale @ A3