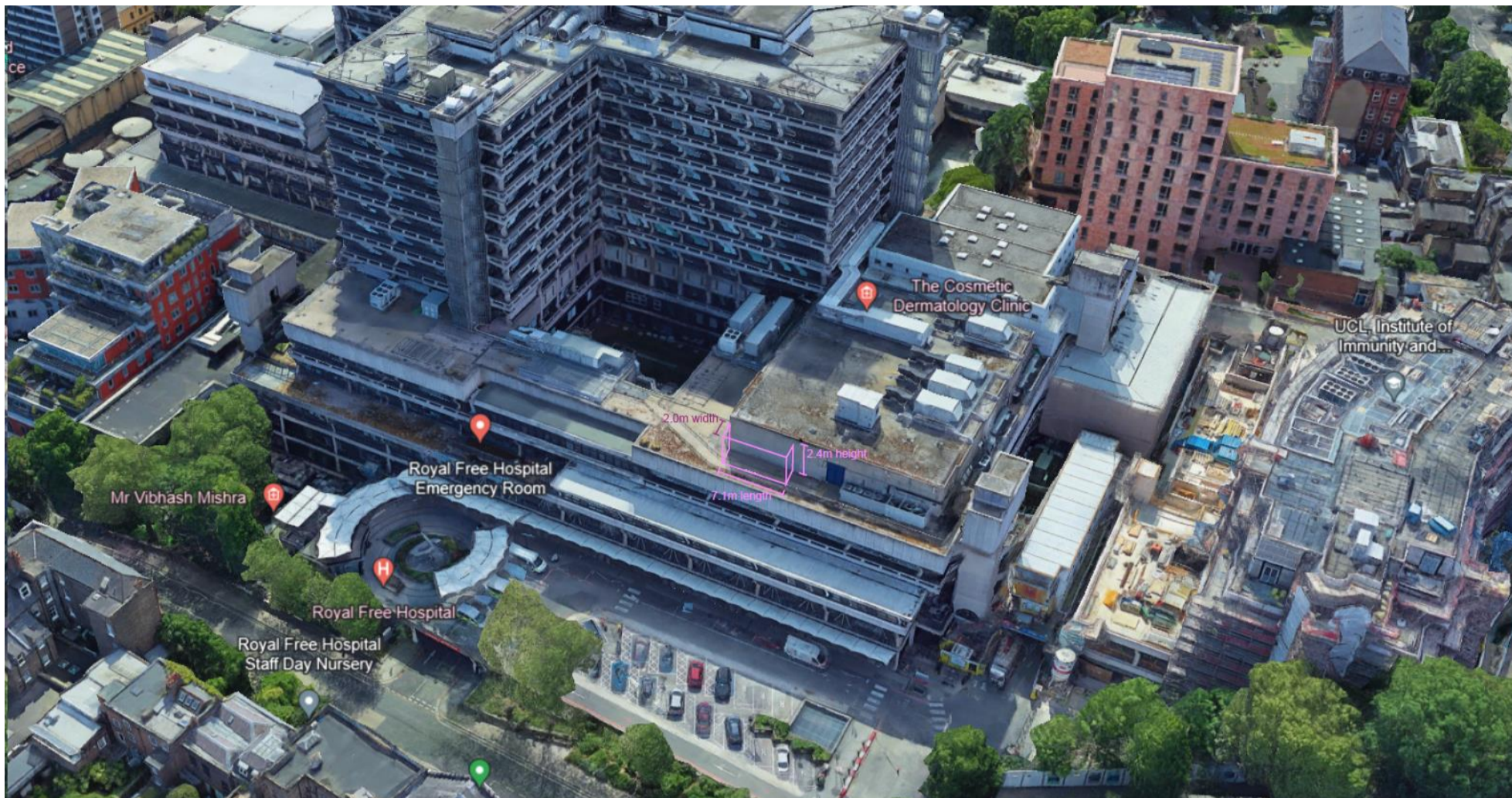


Level 4th Acoustic screens (Chillers CH-4.01 and CH-4.02):

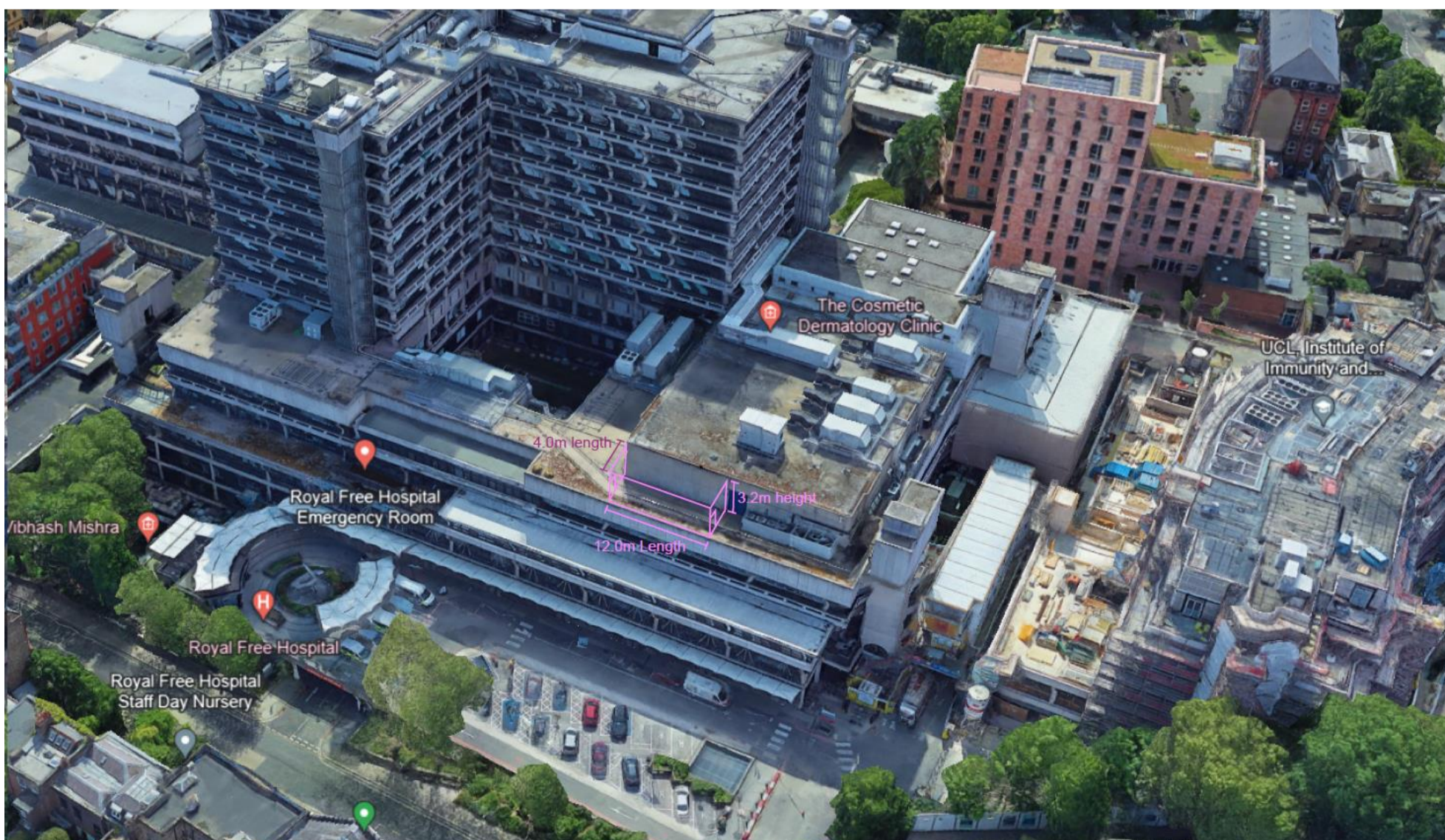
- Original proposal (Granted planning application): Acoustic screen 2.4m Height, 7.1m Length, 2m width.



- New proposal: Acoustic screen proposed by acoustician provider 3.2m Height, 12.0m Length, 4.0m width.

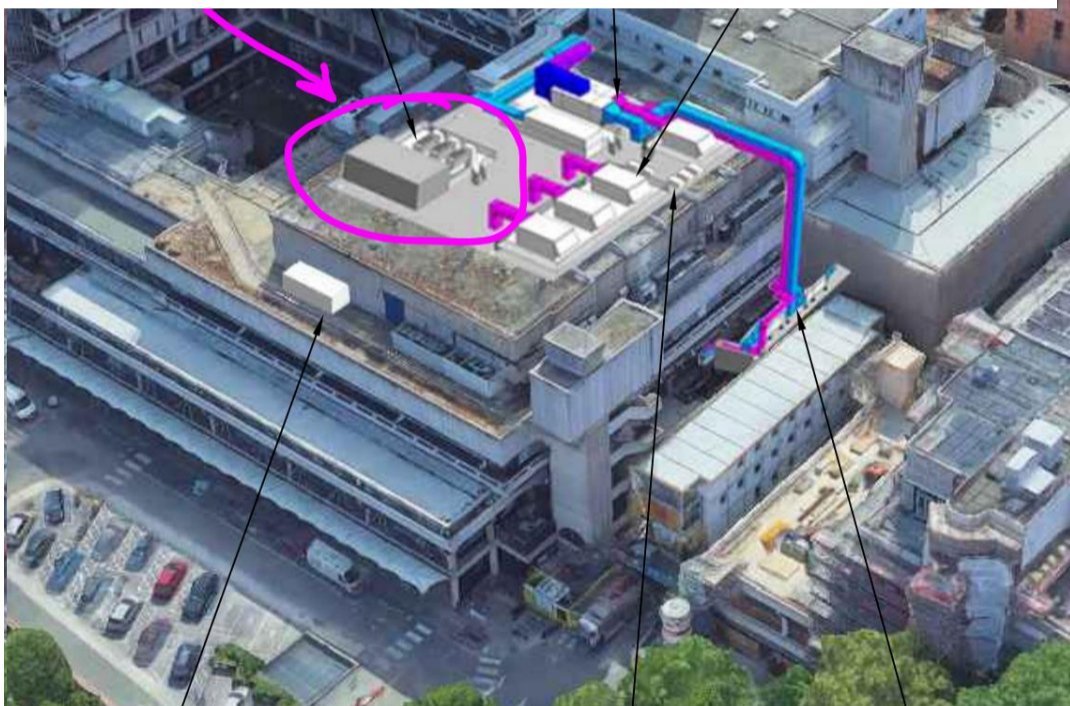
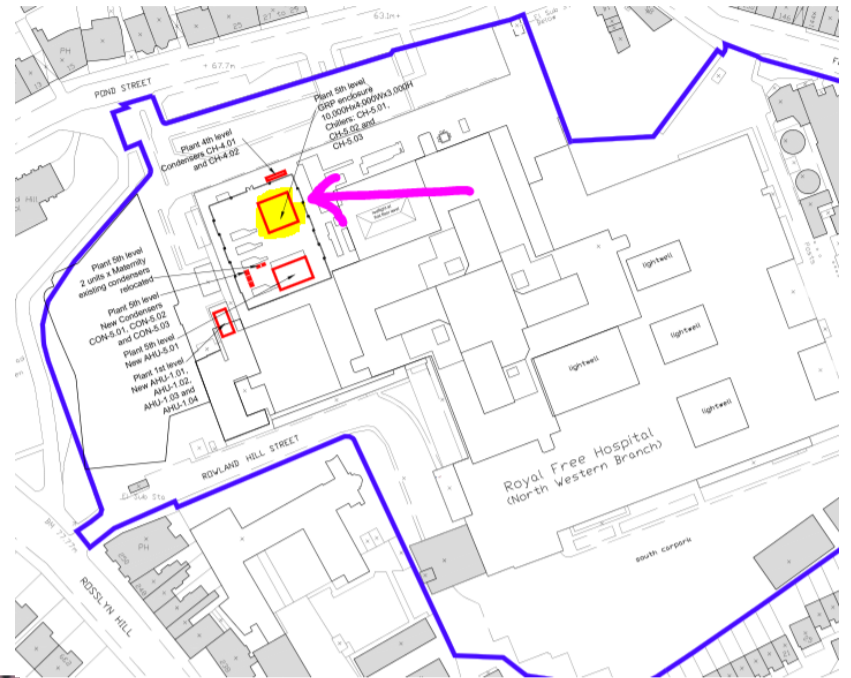
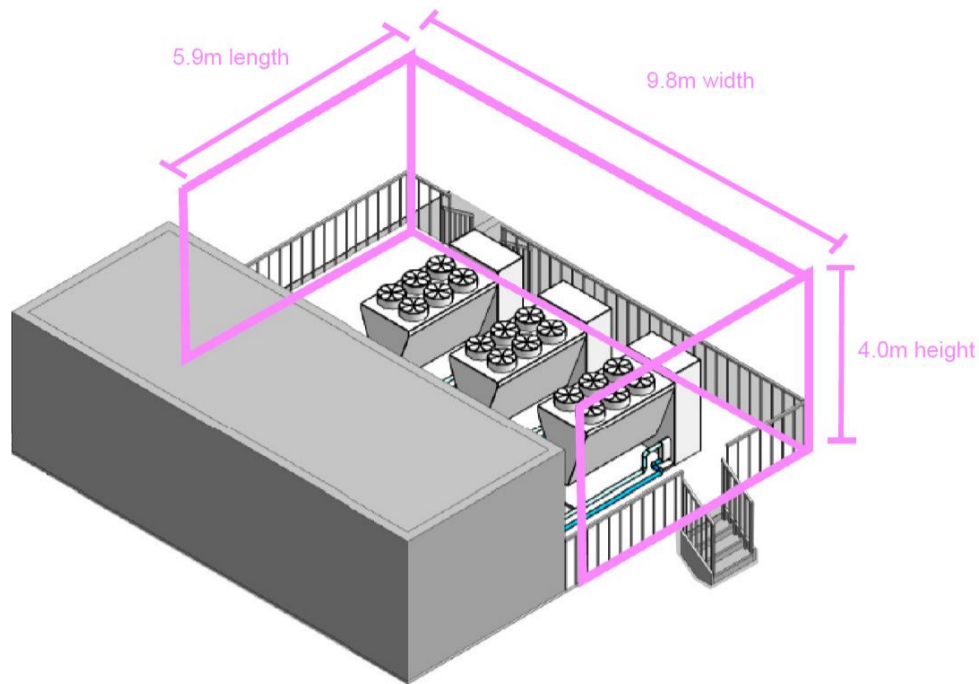
Modifications:

1. In the new proposed design, we've integrated the existing walkway, positioned in front of the screen, into the acoustic enclosure. This adjustment is crucial to avoid people walking in the narrow space between a low parapet (approximately 100-200mm) secured just with guardrails and the acoustic screens. Given that this area is regularly accessed for maintenance or other activities, it serves as the sole access point to certain plants on this level, and the fall is around 5m, it was concluded that this arrangement would make this path safe enough. It prevents the need of walking along a narrow walkway between a guardrail (approximately 1m-0.9m) and a tall acoustic screen.
2. Additional coordination during construction stage between the acoustic screens and the maintenance areas for the chillers required us to expand the proposed screens to include the chiller maintenance access areas within the acoustic enclosure.
3. The Acoustic provider (Conabeare) advise to increase the screen height to achieve the acoustic attenuation as per acoustic report requirements.



Level 5th Acoustic screens (Chillers CH-5.01, CH-5.02 and CH-5.03):

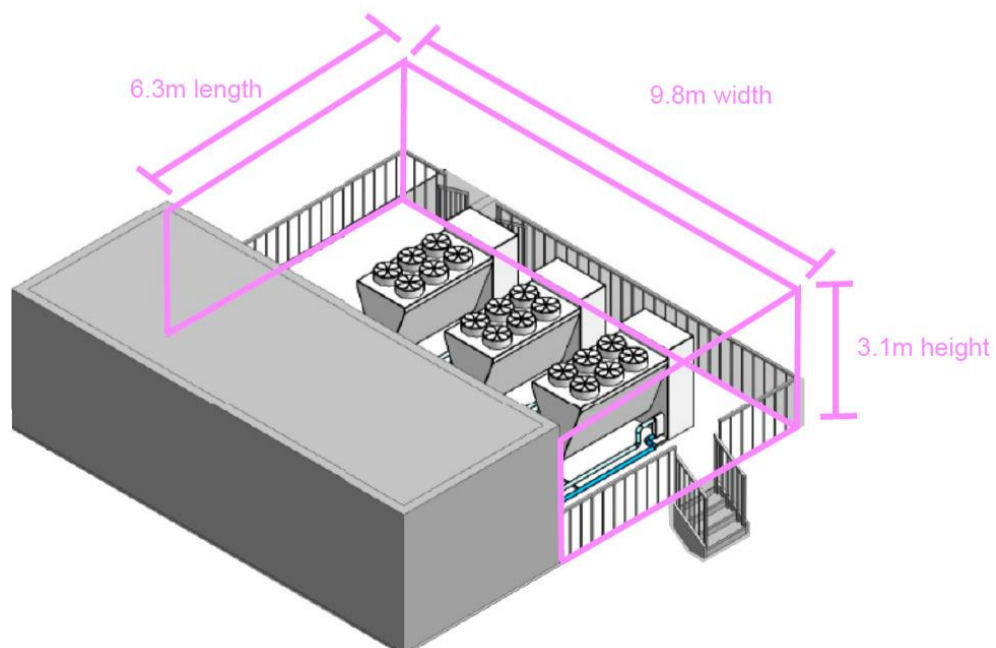
- Original proposal (Granted planning application): Acoustic screen 4.0m Height, 5.9 m Length, 9.8m width, not fixed to GRP enclosure.



- New proposal: Acoustic screen 3.1m Height, 6.3m Length, 9.8m width.

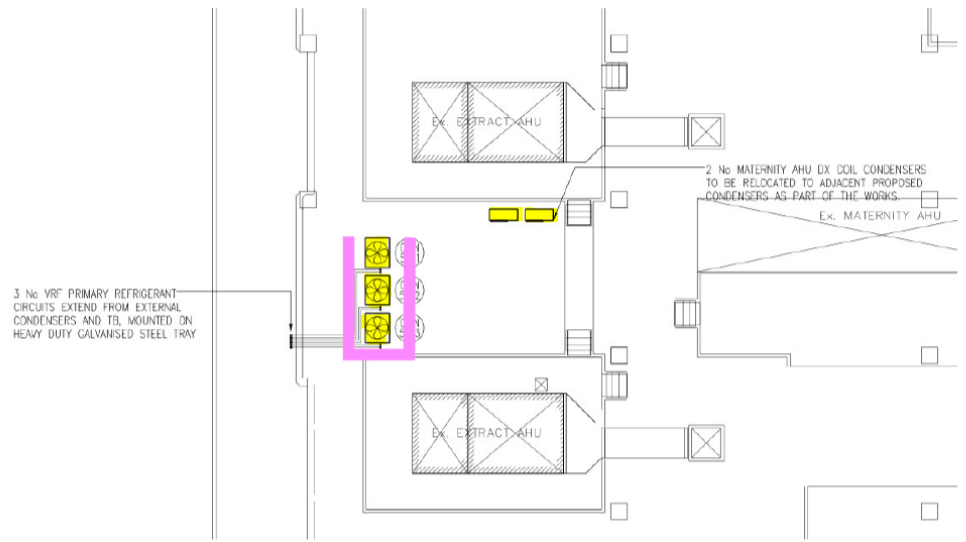
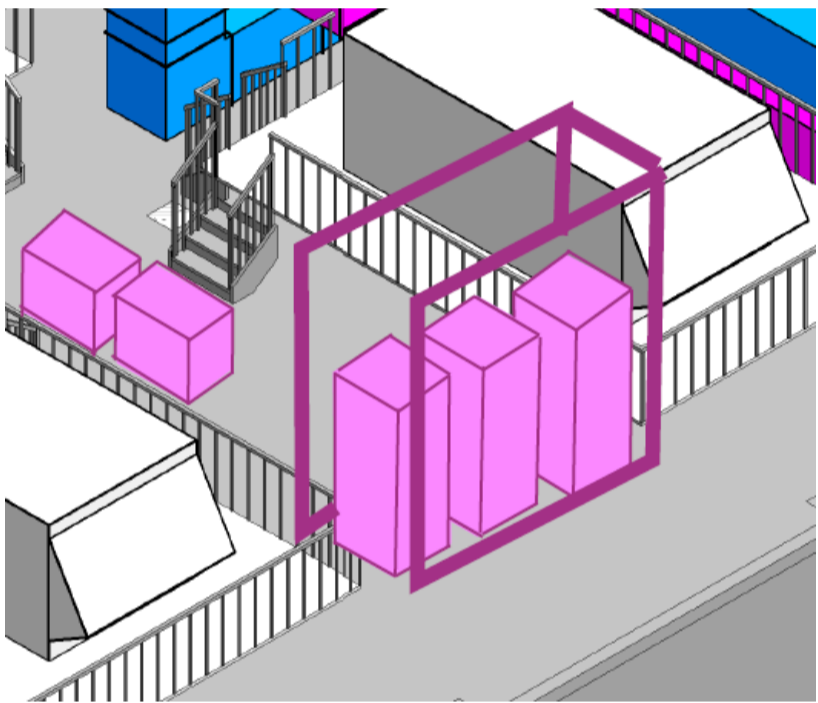
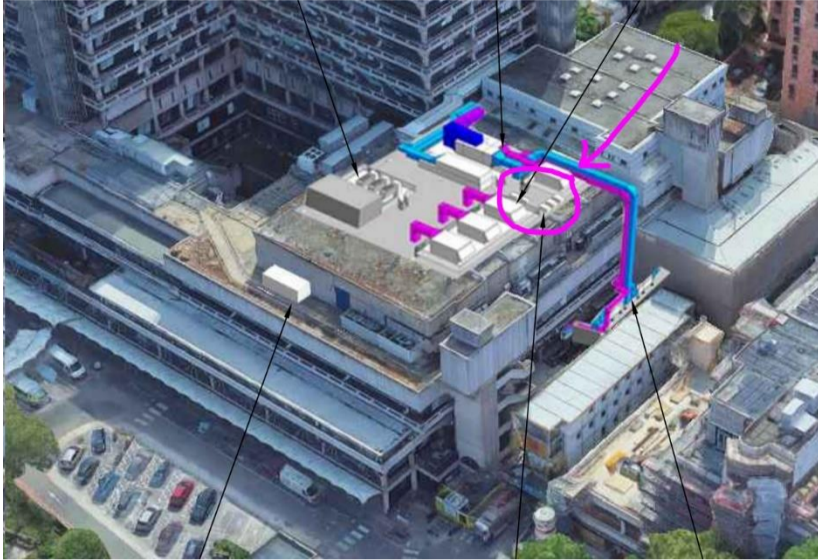
The reasons to modify the original proposal are:

1. To provide more structural stability for the acoustic screens. The screens would be fixed to the GRP enclosure.
2. The height would be reduced as per Acoustic provider advice, still achieving the attenuation required on attenuation record.



Level 5th Acoustic screens for condensers (Chillers CON-5.01, CON-5.02 7 CON-5.03):

- Original proposal (Granted planning application): Acoustic screen for 3 new condensers, 'C' shape.



- New proposal: the Acoustic screen would be modified to show as a 'L' shape, dimensions **2.5m Height, 6.3m Length, 4.5m width**.

This plant, comprising three new condensers and two existing ones, is reorganized to fit the available space surveyed on site while ensuring sufficient maintenance access around all condensers. As a result of this new plant arrangement, the design of the screen was revisited to meet the specified attenuation requirements.

