

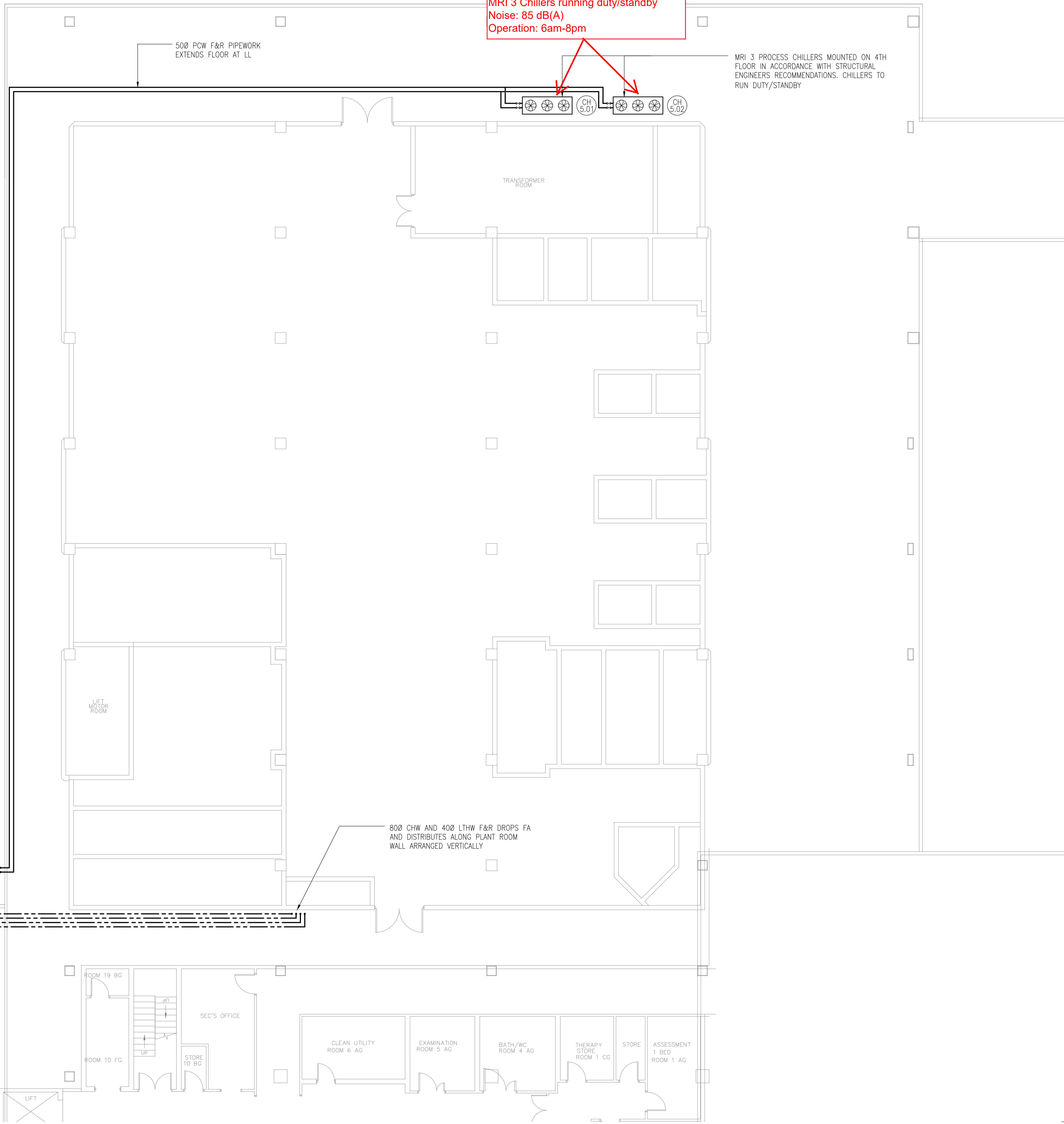
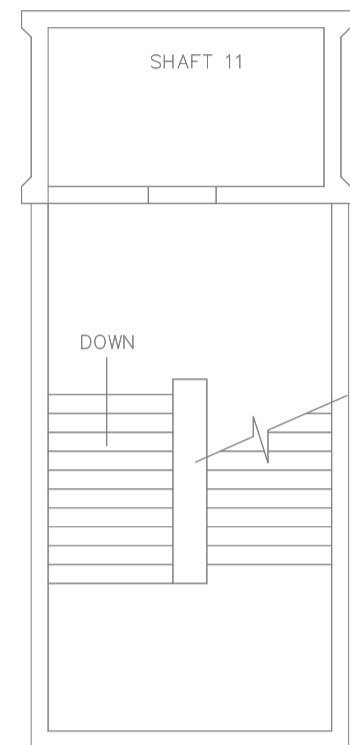
notes

- DO NOT SCALE FROM THIS DRAWING
- THIS DRAWING TO BE READ IN CONJUNCTION WITH RELEVANT ARCHITECTURAL AND STRUCTURAL DRAWINGS, OTHER SERVICES DRAWINGS AND SPECIFICATIONS
- ALL EXTERNAL CWS, LTHW, CHW AND PCW PIPEWORK TO BE TRACE HEATED.

MRI 3 Chillers running duty/standby
Noise: 85 dB(A)
Operation: 6am-8pm

MRI 3 PROCESS CHILLERS MOUNTED ON 4TH FLOOR IN ACCORDANCE WITH STRUCTURAL ENGINEERS RECOMMENDATIONS. CHILLERS TO RUN DUTY/STANDBY

500 PCW F&R PIPEWORK EXTENDS FLOOR AT LL



800 CHW AND 400 LTHW F&R DROPS TO LL TO EXTEND ACROSS LOWER ROOF AND THEN TB

PCW PIPEWORK DROPS TB

approximate line of existing roof below


800 CHW AND 400 LTHW F&R DROPS FA AND DISTRIBUTES ALONG PLANT ROOM WALL ARRANGED VERTICALLY

T1	18.12.21	TENDER ISSUE	LR	SVC
rev	date	description	dm	chk

The Richard Stephens Partnership Limited
Consulting Engineers

Mill Court
Mill Hill
Edenbridge
Kent TN8 5DB

Tel: 01732 782300
Fax: 01732 782340
E-mail: mail@therSP.co.uk
Website: www.therSP.co.uk



client
ROYAL FREE LONDON
NHS FOUNDATION TRUST

architect
ANSELL & BAILEY

project
ROYAL FREE HOSPITAL,
LONDON
IMAGING REFURBISHMENT

title
FOURTH FLOOR
PIPED SERVICES LAYOUT

date	DEC 2021	scale	1:100 @ A1
designed	LR	cad	RSP
checked	SVC	approved	

TENDER DRAWING	
drawing no.	rev
2345-RSP-XX-04-DR-M-04041	T1