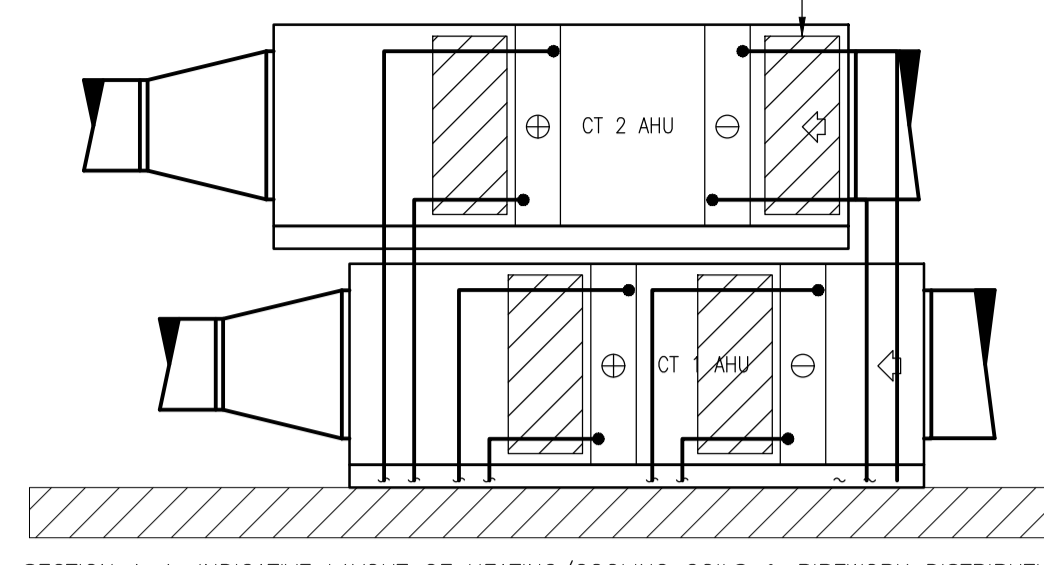
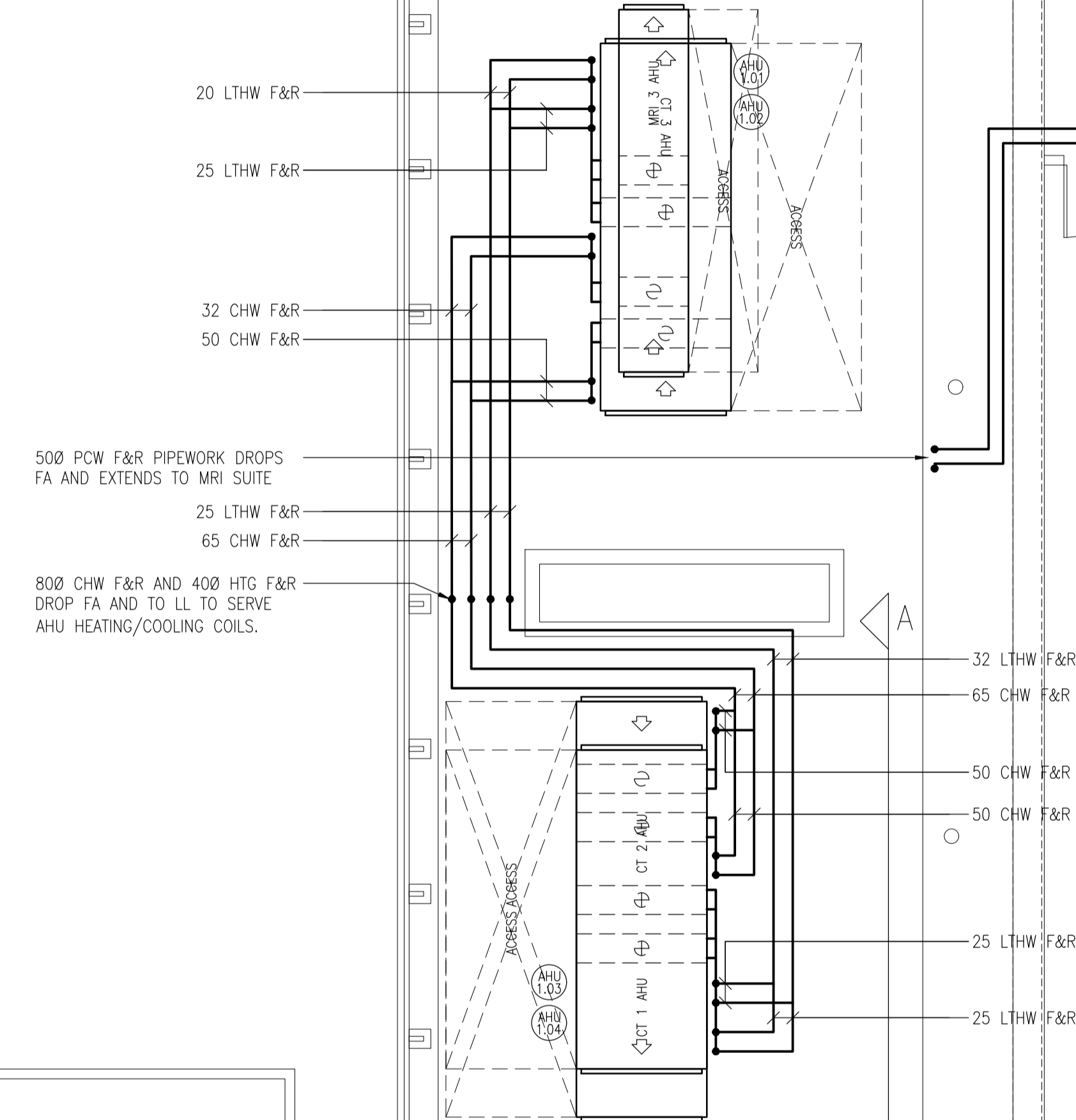


COIL VALVE ARRANGEMENTS. REFER TO RSP DRAWING M-09XX3 FOR FURTHER DETAILS



NEW 2000 QUENCH PIPE RISES TO DISCHARGE TO ATMOSPHERE IN SUITABLE LOCATION. REFER TO DETAIL ON RSP DRAWING 2345-RSP-XX-XX-DR-M-09XX1

500 PCW F&R PIPEWORK DROPS TO PENETRATE FACADE AT HL GROUND FLOOR TO SERVE MRI SUITE.



20 LTHW F&R  
25 LTHW F&R  
32 CHW F&R  
50 CHW F&R  
500 PCW F&R PIPEWORK DROPS FA AND EXTENDS TO MRI SUITE  
25 LTHW F&R  
65 CHW F&R  
800 CHW F&R AND 400 HTG F&R DROP FA AND TO LL TO SERVE AHU HEATING/COOLING COILS.

32 LTHW F&R  
65 CHW F&R  
50 CHW F&R  
50 CHW F&R  
25 LTHW F&R  
25 LTHW F&R

The Richard Stephens Partnership Limited own the copyright to the building services engineering content of this drawing which is not to be used copied published or reproduced in whole or in part in any form without written consent.

notes

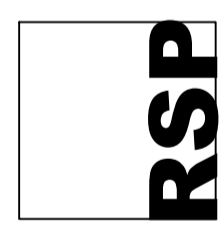
- DO NOT SCALE FROM THIS DRAWING
- THIS DRAWING TO BE READ IN CONJUNCTION WITH RELEVANT ARCHITECTURAL AND STRUCTURAL DRAWINGS, OTHER SERVICES DRAWINGS AND SPECIFICATIONS

rev	date	description	dm	chk
C1	31.10.22	CONSTRUCTION PHASE ISSUE	RSP	SVC

**The Richard Stephens Partnership Limited**  
Consulting Engineers

Mill Court  
Mill Hill  
Edenbridge  
Kent TN8 5DB

Tel: 01732 782300  
Fax: 01732 782340  
E-mail: mail@theRSP.co.uk  
Website: www.theRSP.co.uk



client  
**ROYAL FREE LONDON  
NHS FOUNDATION TRUST**

architect  
**ANSELL & BAILEY**

project  
**ROYAL FREE HOSPITAL,  
LONDON  
IMAGING REFURBISHMENT**

title  
**FIRST FLOOR  
PIPED SERVICES LAYOUT**

date	DEC 2021	scale	1:50 @ A1
designed	LR	cad	RSP
checked	SVC	approved	

**CONSTRUCTION PHASE DRAWING**

drawing no. 2345-RSP-XX-01-DR-M-04011 rev C1