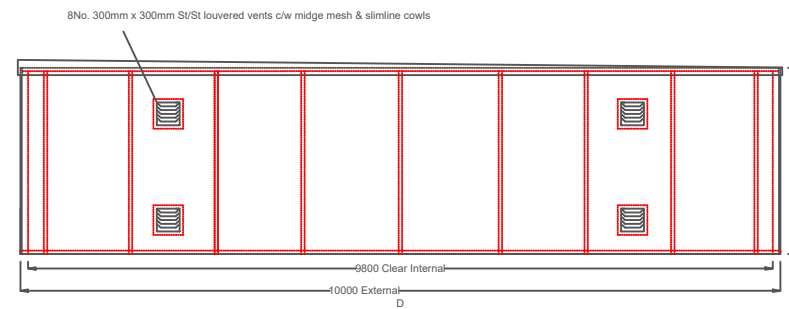
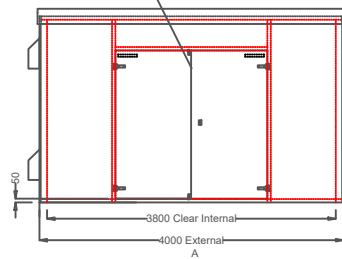
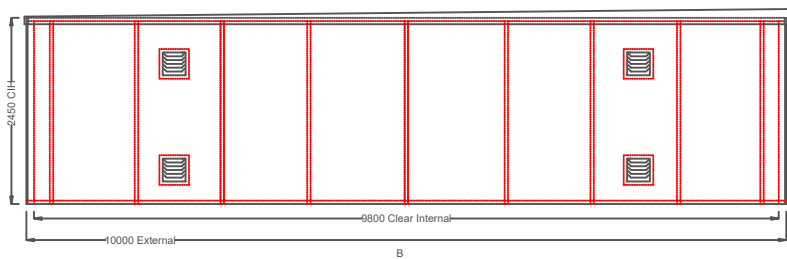
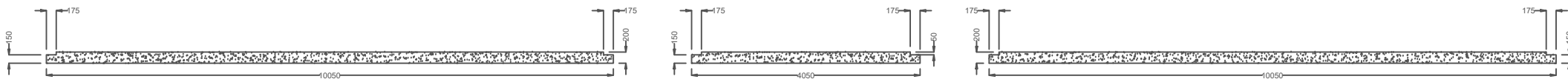


- 1No. Double Door (2000mm W x 2000mm H)
- 4No. SU/St Hinges
- 1No. Yale Type Lock
- 2No. Hold Open Door Stays
- 2No. Shoot Bolts
- 1No. Compression Seal
- 1No. Aluminium Cill Protector



Recommended Stepped Base Detail - Enclosure c/w 120mm Internal GRP Fixing Flange. To be secured with M10 anchor bolts at no more than 1 meter centres.



Adept GRP Ltd
 Tel: 01269 843355
 Tel: 01269 832189
 Fax: 01269 844324
 Unit 4, Heathfield Industrial Estate,
 Thornhill Rd, Cwmgwili, Crosshands
 SA14 6PT

Delivery method:

HIAB

Ready Built

Panel Form

Installation

Customer Collection

Company: Logan Construction

Drawn: Lukas R

External Colour - TBC

Approx. Weight = 3250kg
 U Value = 2.2 W/sq.m/degC

Contact: Terry Roberts

Date: 24/01/2023

Wall Construction: 12mm Ply Core & 45mm x 45mm Battens
 Roof Construction: 12mm Ply Core & 45mm x 45mm Battens
 Battens positioned at no more than 1m centres.

Scheme Title: GRP Enclosure

Checked:

Drawing No. E-AD2556

Job No. E10065

Rev.A